

Forest Core Demarcation Using Geo-Spatial Techniques: A Habitat Management Approach in Panchet Forest Division, Bankura, West Bengal, India.

Mrinmay Mandal

Research scholar

Department of Geography & Environment management, Vidyasagar University

Email: mrinmaymandal882@gmail.com

Dr Nilanjana Das Chatterjee

Associate Professor

Department of Geography & Environment management, Vidyasagar University

Abstract

Habitat interior function effect from an area of specific edge depth in a forest patch. Every habitat has obviously an interior area, small or large size. Structurally, it depends on the shape and edge depth ratio of the specific patch. ~~The A~~ amount of habitat interior ~~is~~ strengthens ~~ing~~ movement, connectivity, protection and availability of species, especially for large size animal. Habitat interior plays a vital role ~~to~~in sustaining their biological behaviour and activities. Forest habitat is developed by plantation after 1980 through different social forestry programs in Panchet Forest division. For this reason, forest cover is increased and it is spatially fragmented in nature. Fragmented habitat has a negative impact on forest interior. So demarcation of habitat interior or core is very urgent for biodiversity conservation and managing habitat structure. Thus, the present study tries to investigate and identify the amount of habitat core using geospatial techniques and field verification. Major objectives are to suggest practical methods to increases the amount of interior as well as to minimize the gap between isolated patches to enhance the functional capability of habitat core in Panchet Forest Division under Bankura District.

Keywords: landscape, habitat colonization, habitat core, ecological behaviour, fragmented habitat, connectivity.

1. Introduction

The core area is defined "as the area within patch beyond some specified depth of edge influence (i.e., edge distance) or buffer width" [17, 18]. So every patch has a core but its amount or effectiveness depends on its shape (Fig-1). Therefore a large patch may not behold large amount of core area when it becomes more complex in shape. Most of conservation importance animal species required large habitat core for their biological function [7]. Forest core is often vital to many wildlife species and essential

to the proper function of much ecological process [5]. Area-sensitive animal species richness, colonization, remoteness from disturbing activities, resting is directly influenced by habitat core area. Interior animal species those are roaming in different homogeneous habitat patch, they can try to relax in a deep core area in a habitat patch for their biological metabolism [11, 9]. Interior portion of habitat is different in micro-climatic condition in case of temperature, wind speed, energy penetration, canopy cover,

shading from the edge [10]. For that reason, wilderness exists in the core than the edge. Wilder animal species, therefore, want to get larger and undisturbed core area. Elephants becoming a wild animal preferred such condition for their biological interaction with habitat. The same condition was happening due to increase forest cover in Bankura district from last few decades as well as in Panchet forest division. After 1980 degraded forest become not only protected but also increased forest area by social forestry [19]. On that situation a small population of elephants of Dalma Wildlife Sanctuary (Jharkhand State) has been making deep foray eastward into the state of West Bengal, make use of small patches of regenerating forest [20]. It is interesting to know that some migrated bull elephants are also residential in nature using existing forest core as their permanent habitat [13, 14, 15].

2. Objectives

Panchet Forest Division (PFD) is consisting of isolated forest patch with

high structural fragmentation. In spite of wildlife, activities are more frequent and also gradually increase [4, 15]. In forest core area of PFD, many selective herbivore species ecological activities have been found [12]. Now elephants take rest at the time of movement to select some forest patch depending upon core condition. Therefore forest core is becoming a commendable factor ecologically. To understand the nature of core of the forest patches and improve the quality of core areas of PFD, study constructs appropriate three objectives.

- a. Identification of forest habitat patches with exact shape from the categorical map
- b. Core area demarcation and estimate at specified edge depth against each and every forest patch.
- c. Improve core area effectiveness by structural management methods for wildlife conservation in future.

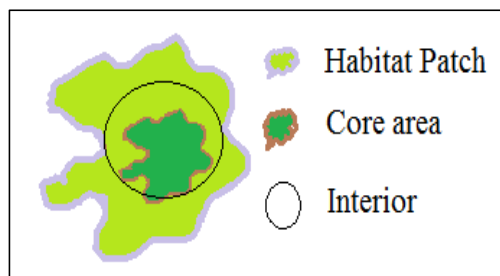


Fig-1: Concept of habitat core and interior area

3. Study area

Panchet Forest Division (PFD) is one of the wildest divisions among other three forest divisions in Bankura district. The latitudinal extension of the study area is 22°53N to 23°12N and longitudinal location is 87°03E to 87°42E. Total geographical area of PFD is 1355.62 sq.km. Among this Reserved Forest is 12.90 sqkm and Protected Forest is 335.11sq.km [1]. Generally, forest is subtropical dry deciduous in nature with dominated by sal (*Shorea robusta*) tree and some of Akasmoni and Eucalyptus mixed.

4. Materials

The study considers forest patch is-as a wildlife habitat. 27 forest habitat patch polygons were demarcated. All forest patches have been digitized from IRS LISS-III P6 image 2016, keeping corresponding structure and shape. Extended three forest patches from PFD to the adjoining district have taken into consideration for the purpose of the study (Fig-2). These forest patch polygons are named as the name of nearest or adjust village name. These patches also place ID value against each and every patch accordingly. After that, these habitat patches are-were analyzed through ArcGIS 10.1 version software and it's Patch Extension Tool.

4.1. Methods

From existing 27 forests habitat patches structural core area has been measured. The core area is measured at specified edge depth at 300 m. Number of disjoint core area in each patch is not considered for the study. Percentage of core area

accepted as an important parameter for the purpose of the study due to size variety of habitat patches. Finally, the output value against every habitat patches will be-were discussed ecologically.

1. Core Area (CA) [16]

$$CA = a_i^c$$

a_i^c = core area (m^2) of patch i based on specified- edge depth at 300 m or buffer distance.

At this fixed edge depth, the value of CA increasing with increasing habitat quality. Practically patch has a larger core. ~~It is meaning means~~ that it offers better condition for wildlife habitation. ~~More attention is paid to the~~ ~~This forest patch will be focused more attention on management~~ due to frequent man-animal conflict in the surroundings.

2. Percentage of Core Area (PCA)

$$PCA = \frac{a_i^c}{a_i} \times 100$$

a_i^c = core area (m^2) of patch i based on specified- edge depth (300m) and a_i is the area (m^2) of i patch.

This geometric technique signifies the area weighted core of the target patch. The index value increasing approach shows that patch structure quality is better. Simple word standard structure habitat shape has a good quantity core than a more complex habitat shape when patch size is the same.

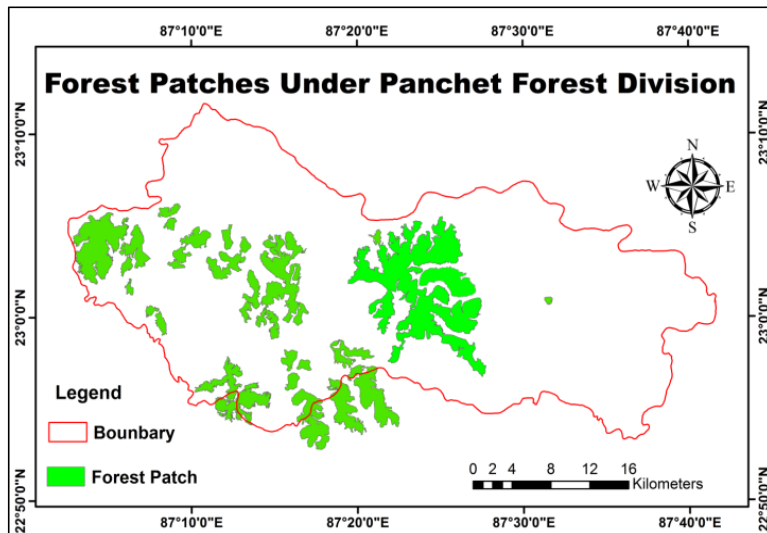


Fig-2: Forest patches from landuse/land cover map of PFD.

Source: IRS LISS-III P6 image 2016

5. Result and Discussion

5.1. Core area (CA)

After analysis, the study finds out the larger core holding forest patch Joypur 29779794.91sq.m, Taldangra 11046878.57 sq.m, Kalabagan 4361352.221 sq.m, Joypur-ii 5053611.78, Bridabanpur 2780911.929 sq.m accordingly in PFD (Fig-3). The lowest core area has been found in Pearbandh forest patch 274.1642sq.m and core area is nil in Chatrakrishnanagar forest patch. Medium size core area patches are Upper Arrha 1801929.698 sq.m, Sabrakona 339258.7728 sq.m, Amdangra 286813.3655 sq.m, Krishnasingpur 819628.7489 sq.m respectively. For structural high complexity in Joypur (Fig-4), Majuriprasadpur, Upper Arrha consist of several disjoint core area that is number of core is high. This scenario shows that

these forest patches have more fragmented in nature and land encroachment is high. Ecologically this fact reduced the quality of habitat.

5.2. Percentage of core area (PCA)

Large habitat patch has dominance on the landscape in response to animal behaviour and animal ecological function acting on the landscape. When large habitat patch has minimum core due to its complex shape structure, it would be the same suitable like medium size habitat patch. The same situation ~~has was~~ found in the study that Joypur forest (81973085 sq.m with 36.33% PCA) and it is the largest patch in PFD in spite of its percentage of core area is smaller than Taldangra forest patch (22240596 sq.m with 49.66% PCA) which is a medium size patch (Fig-5). Generally above 30% PCA have been

Comment [VNO1]: I don't understand Joypur-ii and the figure attributed to it since there is no unit attached to it.

Comment [VNO2]: Is it possible for author to show the names of the various patches in this fig 3

found only in four forest patches, Joypur, Joypur-ii 50.98%, Kalabagan 34.2% and Taldangra. In between (15-30) % PCA has been found in seven forest patches like Sabrakona 20.48% Brindabanpur 23.35%, Valuka 21.6%, Peardoba 27.87% and

Chandabelia 18.07%. All other patches have scored below 15% PCA. It is interesting to know that Chatrakrishnanagar forest patch has no core area at specified edge depth.

Comment [VNO3]: %
Comment [VNO4]: Only 5 listed and seven was indicated

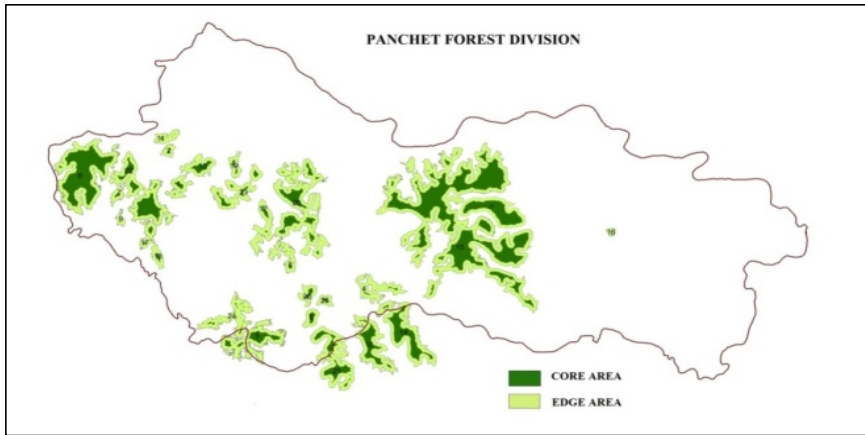


Fig-3: Core area map of forest habitat patches in PFD at 300m edge depth

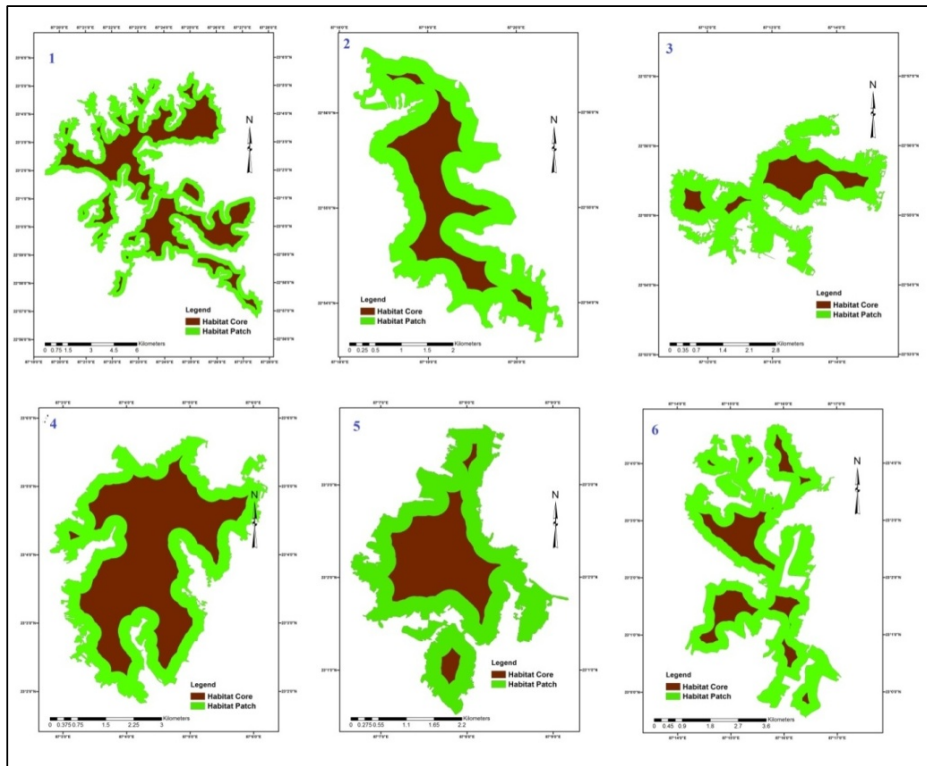


Fig- 4: showing different six forest patches (1. Joypur-ID 14, 2.Peardoba-ID 9, 3.Upperpartarrha –ID 4, 4. Taldangra-ID 5, 5.Valuka-ID 21, 6. Majuriprasadpur-ID 11) core area at 300 m edge depth.

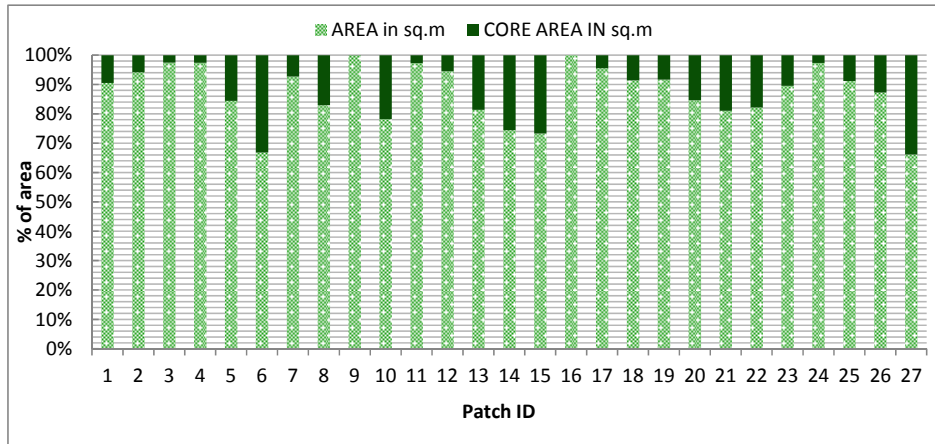


Fig- 5: Patch wise graphical presentation of forest core area in % respect of individual patch area.

5.3. Structural management

Core area development in forest ecosystem is an important part of biodiversity management [21]. Habitat fragmentation and encroachment is a natural phenomenon in human modified landscape. According to Sudhakar and Raha, [19] amount of forest cover had been increased in the past three decades. Increase of forest area does not mean enhancement of ecological quality of habitat interior or core. For increasing quality of core area, habitat structural management is needed. Especially the non-forest land near the centre of the habitat patches are considered for plantation or forest regeneration. It should be the first step

to develop core of the habitat. It is also effective to reduce habitat structural fragmentation and edge effect [2, 22, 6, 26]. In the study area Joypur forest patch is the largest patch but highly fragmented and more complex in shape due to agricultural encroachment rather than Taldangra and Valuka East patch (Fig-6). If in Joypur forest patch's encroached area are altered in forest cover by plantation or forest regeneration then it will be a good core habitat for wildlife.

5.3.1. Selection of plant species and planted area

Selection of the plant species and planted area is an important objective for any forest regeneration program [24, 3]. In the study area, forest department takes several forestation and reforestation program. Generally, they planted Sal (*Shorea robusta*), Akashmoni (*Acacia auriculiformis*), and Euklepatus (*Eucalyptus globulus*) in the vacant land for economic benefit. This study suggests that plantation must be considering two things. First is selection of local plant

species which has the capability to improve undergrowth, maximum canopy and layering of the forest. Plant species which is producing forage for herbivores animal (elephants) in the core area of the forest just as in (Fig-7). Second is area selection for plantation. Encroachment area or non-forest area near the centre surrounding of the forest patch is a suitable place for forest plantation to improve core or interior habitat [8]. Thus approaches considerably rises quality of habitat and changes nature of man-animal conflict in the study area [25].

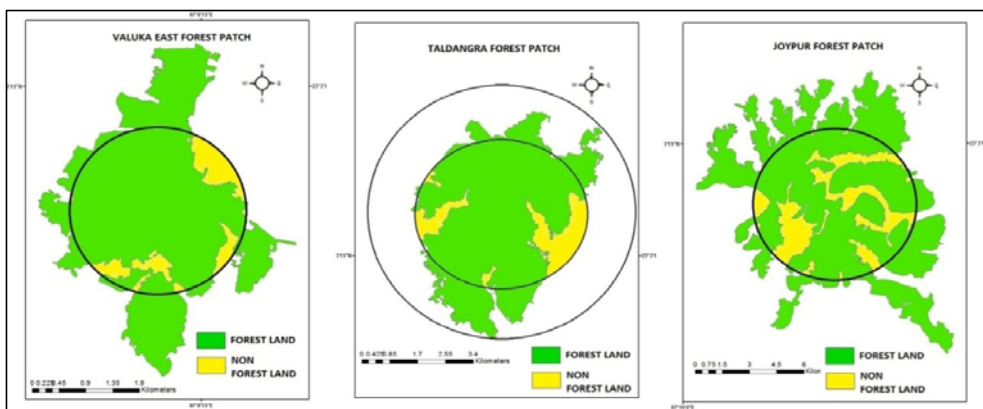


Fig-6: Three patches with their non-forest area at specified circle distance from the centre of the patch



Fig-7: Real photographs were taken at the time of the survey in Joypur Forest

6. Conclusion

After understanding the overall habitat characteristics on the basis of interior or core structure, it is cleared that habitat fragmentation is one of the major facts which controls the amount and percentage of core area. In PFD 27 forest patches are highly fragmented. Therefore, to increase forest core suitable plantation area is very important for urgent forest management. This will enhance habitat structural quality as well as promote existing biodiversity.

7. Acknowledgements

We are thankful at first to the forest officers and staff of Panchet Forest Division under Bankura district, West Bengal for stretching their helping hand for getting different information at the time of fieldwork and assurance to do this work. Forest rangers information about nature of animal colonization was very vital to us to understand the habitat situation. We are grateful to the Department of Geography and Environment Management, Vidyasagar University, West Bengal for supplying field survey materials and technical support.

Reference:

1. Anon, (2016-17). State Forest Report. Forest Department, Govt. of West Bengal Directorate of Forests Office of The Principal Chief Conservator of Forests. Kolkata
2. Desai. A. (1991). The home range of elephants and its applications or management of the Mudumalai Wildlife Sanctuary, Tamil Nadu. *Journal of Bombay Natural history*. 88:145-156.
3. Banks, S. C., Lindenmayer, D. B., Ward, S. J., & Taylor, A. C. (2005). The effects of habitat fragmentation via forestry plantation establishment on spatial genotypic structure in the small marsupial carnivore, *Antechinus agilis*. *Molecular Ecology*, 14(6), 1667-1680.
4. Chatterjee, N. Das. (2016). *Man-Elephant Conflict: A Case Study from Forests in West Bengal, India*. Springer.
5. Couvillion. B.R. (2005). Spatial heterogeneity in forested landscape: an examination of forest fragmentation and sub-urban sprawl in the Florida parishes of Louisiana. Louisiana State University.
6. Cushman S.A (2006) Effects of habitat loss and fragmentation on amphibians: a review and prospectus. *Biol Conservat* 128:231–24
7. Dramstad, W.E., and J.D. Olson, and R.T.T. Forman. (1996). *Landscape Ecology Principle in Landscape Architecture and Landuse Planning*. Island press, American society of landscape design.
8. Dauber, J., M. Hirsch., D. Simmering, R. Waldhardt, A. Otte., V. Wolters, (2003). Landscape structure as an indicator of biodiversity: Matrix effects on species richness. *Agriculture, Ecosystems & Environment* 98: 321–329.
9. Farina, A. (2006). *Priciples and methods in landscape ecology*. Landscape series, Springer.

Comment [VNO5]: The entire references list should be reformatted to Journal approved style and standard. Author should check especially the position of year of publication and do the needful

10. Forman, R.T.T. (1995). Land mosaic: the ecology of landscape and regions. Cambridge University press, Cambridge, England.
11. Forman, R.T.T. (2012). Safe passages: highways, wildlife, and habitat connectivity. Island Press.
12. Kulandaivel, S. (2010). A paradigm shift in the elephant depredation in South Bengal. Divisional Forest Officer, Bankura North Division, Personal Communication.
13. Mandal, M, and Chettarjee, N.D, and Hazra, J, (2016). Elephant migration and colonization in Bankura district, West Bengal, India. Vidyasagar University. Indian Journal of Geography and Environment 14: 46-52
14. Mandal, M., & Chatterjee, N. Das. (2018). Quantification of Habitat (Forest) Shape Complexity through Geo-Spatial Analysis: An Ecological Approach in Panchet Forest Division in Bankura, West Bengal. Asian Journal of Environment & Ecology. AJEE, 6(1): 1-8,
15. Mandal, M. (2018). Forest Range Wise Asian Elephant's (*Elephas Maximus*) Habitat suitability assessment through Food and Water Availability: A Case Study in Panchet Forest Division, Bankura, West Bengal. International Journal of Basic and Advance Research ISSN 2454-4639 (P) 2456-1372 (O)
16. McGarigal, K., and B.J. Marks. (1995). FRAGSTATS: spatial pattern analysis program for quantifying landscape structure. Gen. Tech. Report PNW-GTR-351, USDA forest service, Pacific Northwest Research Station, Portland, OR
17. McGarigal, K., & Cushman, S. (2005). The gradient concept of landscape structure [Chapter 12]. In: Wiens, John A.; Moss, Michael R., Eds. Issues and Perspectives in Landscape Ecology. Cambridge University Press. p. 112-119., 112–119.
18. McGarigal, K., and S.A. Cushman, M.C. Neel, and E, Ene. (2002). FRAGSTATS: Spatial Pattern Analysis Program for Categorical Map. Computer software program produced by the authors at the University of Massachusetts, Amherst,
19. Sudhakar, R and A. K. Raha. (1994). Forest change detection study of nine districts of West Bengal through digital image processing of Indian Remote Sensing Satellite data between 1988 & 1991 – Procedural Manual and Inventory. Regional Remote Sensing Service Center, Kharagpur and Forest Department, Govt. of West Bengal joint collaborating project.
20. Sukumar. R. (2003). The Living Animals: Evolutionary Ecology, Behavior, and Conservation. Oxford University Press, New York.
21. Li, H., & Wu, J. (2007). Landscape pattern analysis: key issues and challenges. In Key topics in landscape ecology. Cambridge University Press.
22. Desai A. and S. Hedges, (2010). Notes from the Co-chairs IUCN/SSC Asian Elephant Specialist Group. Gajah 33(2010) 3-5

landscape structure. *Landscape Ecology*, 24(3), 433–450.

23. McGarigal, K., Tagil, S., & Cushman, S. A. (2009). Surface metrics: an alternative to patch metrics for the quantification of landscape structure. *Landscape Ecology*, 24(3), 433–450.
24. Das Gupta, S.P. (1989). Forest eco-system in West Bengal. Edited by Budhadev Choudhuri and Asok Maiti in *Forest and Forest Development in India*. Inter-India Publications, D-17, Raja Garden Extn., New Delhi.
25. Singh, A.K. (2006). Ecological investigation of human-elephant conflict in south West Bengal. Thesis paper, Saurashtra University, Rajkot, India.
26. McGarigal, K., Tagil, S., & Cushman, S. A. (2009). Surface metrics: an alternative to patch metrics for the quantification of