

**Simulating the impact of climate change on growth and yield of maize using CERES-Maize model under temperate Kashmir.**

**ABSTRACT**

Climate variability has been and continues to be, the principal source of fluctuations in global food production in countries of the developing world and is of serious concern. Process-based models use simplified functions to express the interactions between crop growth and the major environmental factors that affect crops (i.e., climate, soils, and management), and many have been used in climate impact assessments. Average of 10 years weather data from 1985 to 2010, maximum temperature shows an increasing trend ranges from 18.5 °C to 20.5°C . This means there is an increase of 2°C within a span of 25 years. Decreasing trend was observed with respect to precipitation was observed with the same data. The magnitude of decrease was from 925 mm to 650 mm of rainfall which is almost decrease of 275 mm of rainfall in 25 years . Future climate for 2011-2090 from A1B scenario extracted from PRECIS run shows that overall maximum and minimum temperature increase by 5.39 °C (±1.76) and 5.08 °C(±1.37) also precipitation will decrease by 3094.72 mm to 2578.53 (±422.12) The objective of this study was to investigate the effects of climate variability and change on maize growth and yield of Srinagar Kashmir. Two enhanced levels of temperature (maximum and minimum by 2 and 4 °C) and CO<sub>2</sub> enhanced by 100 ppm & 200 ppm were used in this study with total combinations of 9 with one normal condition. Elevation of maximum and minimum temperature by 4°C anthesis and maturity of maize was earlier 14 days with a deviation of 18% and 26 days with a deviation of 20% respectively. Increase in temperature by 2°C to 4 °C alone or in combination with enhanced levels of CO<sub>2</sub> by 100 and 200 ppm the growth and yield of maize was drastically declined with an reduction of about 40% in grain yield. Alone enhancement of CO<sub>2</sub> at both the levels fails show any significant impact on maize yield.

## Introduction

The effect of climate change on the crop productivity is usually investigated with the experimental methods using a growth chamber or with the numerical methods using a crop model. According to the IPCC Third Assessment Report (IPCC, 2007), climate change is already happening, and will continue to happen even if global greenhouse gas emissions are curtailed.

Many studies document the implications of climate change for agriculture and pose a reasonable concern that climate change is at threat to poverty and sustainable development, especially in developing countries. Future crop production will be adapted to climate change by implementing alternative management practices and developing new genotypes that are adapted to future climatic conditions. Long term weather data of Kashmir valley revealed (Fig 1) that there is increasing trend in temperature. Average maximum temperature has increased by  $1^{\circ}\text{C}$  during last 30 years. Consequently average minimum temperature has increased by  $0.5^{\circ}\text{C}$ . Precipitation trend is decreasing and erratic. Crop simulation models can be used in decision making in advance along with GIS in future effectively by saving time.

Maize known as the “Queen of Cereals” is the third most important cereal crop in India after rice and wheat and is cultivated on 8.11 million (m) ha with production of 19.73 million tonnes with productivity of  $2.41 \text{ tonnes ha}^{-1}$  (Agricultural Research Data Book 2011). Among the major crops of Jammu and Kashmir in terms of acreage maize is grown in area of 0.32 mha with the production of 0.63 m ton (D.E.S, 2010-11). The average yield of 2.0 t/ha (D.E.S, 2010-11) of this crop has also nearly doubled since last decade. This increase in yield has been mainly achieved by increase in the area under high yielding varieties. However, the genetic potential of the improved varieties is at least three times of the present average yield of the state. Being an important cereal, over 85% of its production in the country is consumed directly as food in various forms, the chapatis is the common ‘preparation, whereas, roasted ears, pop corns and porridge are other important forms in which maize is consumed. Besides, it is also used for animal feeding, particularly for poultry and in starch industry. Green maize plants furnish a very succulent fodder during spring and monsoon particularly in North India. Maize is grown under wide range of climatic conditions, mostly in warmer parts of the temperate region and areas of humid sub-tropical climate. It is grown practically at all

altitudes except where it is too cold or the growing season is too short. The crop requires considerable moisture and warmth from the time of planting to the termination of flowering period.

### **Process-based crop models**

Researchers first evaluated model performance using data from cropping systems currently used in their respective countries, then used the models to assess the potential impacts of climate change on their cropping systems using different climate scenarios. Use of crop simulation models would help in studying impacts of climate change on crops as well as identifying and prioritizing the management options for adapting/mitigating the climate change effects.

Process-based models use simplified functions to express the interactions between crop growth and the major environmental factors that affect crops (i.e., climate, soils, and management), and many have been used in climate impact assessments. Most were developed as tools in agricultural management, particularly for providing information on the optimal amounts of input (such as fertilizers, pesticides, and irrigation) and their optimal timing. Dynamic crop models are now available for most of the major crops. In each case, the aim is to predict the response of a given crop to specific climate, soil, and management factors governing production. Crop models have been used extensively to represent stakeholder's management options (Rosenzweig and Iglesias, 1998).

The ICASA/IBSNAT dynamic crop growth models (International Consortium for Application of Systems Approaches to Agriculture – International Benchmark Sites Network for Agro technology Transfer) are structured as a decision support system to facilitate.

### **Methodology**

DSSAT is a software package integrating the effects of soil, crop phenotype, weather and management options that allows users to ask "what if" type questions and simulate results by conducting, in minutes on a desktop computer, experiments which would consume a significant part of an agronomist's career. It has been in use for more than 15 years by researchers in over 100 countries. The DSSAT simulates growth, development and yield of a crop growing on a uniform area of land under prescribed or simulated management as well as

the changes in soil, water, carbon, and nitrogen that take place under the cropping system over time. Simulations of crop responses to management (DSSAT). The ICASA/IBSNAT models have been used widely for evaluating climate impacts in agriculture at different levels ranging from individual sites to wide geographic areas (Rosenzweig and Iglesias, 1994, 1998). This type of model structure is particularly useful in evaluating the adaptation of agricultural management to climate change. The DSSAT software includes all ICASA/IBSNAT models with an interface that allows output analysis. On the basis of above observations the following environmental modifications will be studied with respect to growth and yield of maize under temperate Kashmir using DSSAT 4.5.

### **Simulation models**

Crop growth simulation models and biogeochemical and biophysical models have been very helpful in projecting the future crop and soil productivity. These models in connection with different GCM models predict the future agricultural practices that can adapt to different climate change scenarios. Here are a few of the models that can be used for different scenarios analysis to combat impact of climate change on agricultural production of the globe. Simulation models that are able to assess climate change impact on crop growth, yield and farm economy, still lack complete feedback structures. Only single aspects can be investigated. However, modelling these single aspect increases knowledge on to the aspects of expectations from climate change, if interpreted carefully and in the context of the model's abilities. Simulation models are widely used to address "what if" type questions, such as, what if the climate changes, different irrigation or fertilization regimes are used, different sowing dates are used, different cultivars are used, etc. In addressing actual yield predictions required by governments, private corporations, or NGOs, different types of simulation models are used for solving these "what if" type questions. Here, capabilities of different simulation models will be discussed in assessing the impact of climate change on agro ecosystem and what would be the possible mitigation and adaptation.

Assuming an appropriate model is at hand and a reference crop production scenario exists, simulating the effects of climate change mainly involves running the model for the weather and CO<sub>2</sub> scenarios of interest. For a single site or region, the scenarios may be specified as fixed (e.g. an increase in daily mean temperature of 2°C) or relative (20% decrease in daily precipitation). These adjustments may be held constant over the crop cycle or varied. The choice depends on the objectives and the source of the climate change scenario. Because a season might be unrepresentative of long-term trends, simulations are usually run

for 20 or more years. The requisite weather data may come from historical records or from weather generator software that reproduces the statistical properties of historic conditions (e.g. Mavromatis and Jones, 1998; Jones and Thornton, 2003).

Using DSSAT, Jones and Thornton (2003) simulated the impact of climate change on maize production in Africa and Latin America and showed that there is 10 % decrease in aggregate maize production by 2055. Alexandrov & Hoogenboom (2000) simulated the impact of climate variability for the major crops, including maize and winter wheat, and assessed possible adaptation measures for Bulgarian agriculture under an expected climate change. Keeping in view the importance of climate change, maize Simulation studies will be carried out using DSSAT V.4.5 (CERES-Maize) model with an objective **“To access the impact of climate change on growth and yield of maize using CERES-Maize model DSSAT 4.5”** with below mentioned environmental modifications.

**Table:1. Environmental modifications in the study will be as under**

Environmental modification	Treatments (Climate change)		
	Max. temp. (°C)	Min. temp. (°C)	CO <sub>2</sub> (ppm)
E <sub>1</sub> (control )	Normal	Normal	Normal
E <sub>2</sub>	+2	+2	Normal
E <sub>3</sub>	+4	+4	Normal
E <sub>4</sub>	Normal	Normal	480
E <sub>5</sub>	+2	+2	480
E <sub>6</sub>	+4	+4	480
E <sub>7</sub>	Normal	Normal	580
E <sub>8</sub>	+2	+2	580
E <sub>9</sub>	+4	+4	580

145

## Results and Discussion;

Location of study is Shalimar Srinagar which is situated 16 Km away from city center that lies between 34.08° N latitude and 74.83° E longitude at an altitude of 1587 meters above the mean sea level.

### Input requirements to run CERES – maize model

For simulation of CERES maize model, minimum data sets (MDS) on crop management, macro and micro-environmental parameters associated with weather, soil and crop are required as input. Input data files of CERES-maize model are as per IBSNAT standard input/output formats and file structure described in DSSAT v 3 (Hoogenboom *et al.*, 1999).

### Weather information.

Daily weather data of Kashmir , Shalimar Srinagar (2015) was used with parameters solar radiation (MJ m<sup>-2</sup> day<sup>-1</sup>) minimum and maximum air temperature (°C) and rainfall (mm). These daily weather data including site specific information, other optional weather variables were collected and used for creating weather file (WTH) and running CERES maize model.

### Table :2. Soil information

The soil file already developed at Shalimar for DSSAT was used for running model.

SOIL	LOWER	UPPER	SAT	EXTR	INIT	ROOT	BULK	pH	NO3	NH4	ORG
DEPTH	LIMIT	LIMIT	SW	SW	SW	DIST	DENS				C
Cm	cm3/c	m3	cm3/c m3	cm	3/cm3		g/cm3		ugN/g	ugN/g	%
0- 5	0.204	0.34	0.392	0.136	0.322	1	1.45	6.9	11.2	1.2	2.19
15-May	0.204	0.34	0.392	0.136	0.322	1	1.45	6.9	11.2	1.2	2.19
15- 25	0.209	0.345	0.39	0.136	0.322	0.75	1.45	7.2	11.2	1.2	1.21
25- 35	0.209	0.345	0.39	0.136	0.322	0.5	1.45	7.2	11.2	1.2	1.21
35- 50	0.198	0.335	0.39	0.137	0.281	0.35	1.49	8	11.2	1.2	0.53
50- 65	0.185	0.323	0.395	0.138	0.257	0.2	1.58	8.2	11.2	1.2	0.2
65- 80	0.185	0.323	0.395	0.138	0.244	0.15	1.58	8.2	11.2	1.2	0.2
80- 99	0.201	0.328	0.408	0.127	0.239	0.1	1.54	8.1	11.2	1.2	0.1
99-122	0.198	0.325	0.41	0.127	0.325	0.05	1.58	8.2	0.01	0.01	0.09

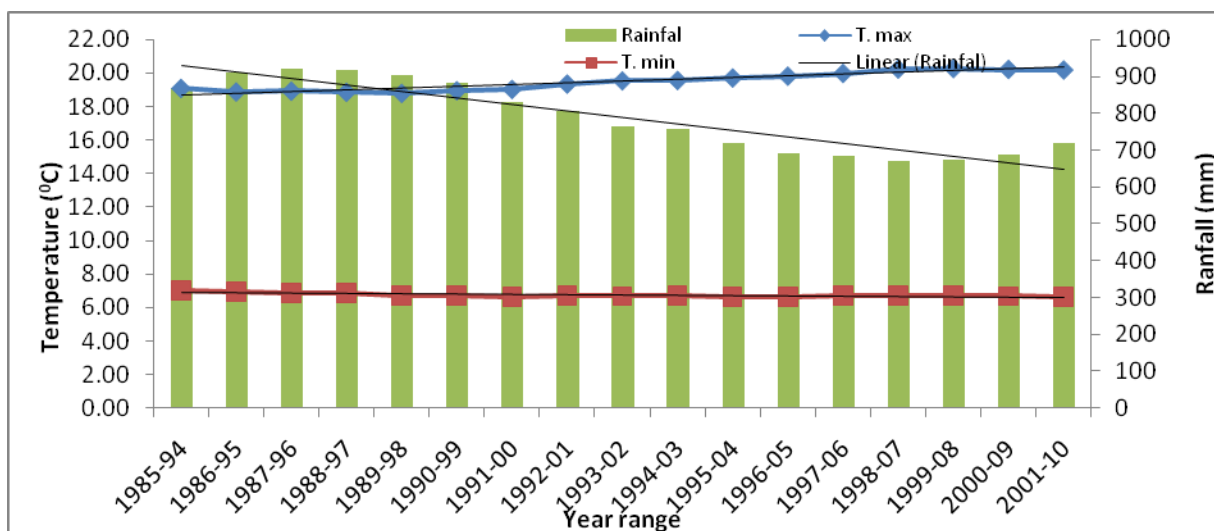
**Table :3. Genetic coefficients of maize cultivar of Shalimar Maize Composite 4.**

Genetic coefficients were calibrated and below mentioned values were used in the model.

Coefficient	Unit	Definition	Value
P1	°C day	Thermal time from seedling emergence to the end of the juvenile phase	280
P2	Days	Extent to which development is delayed for each hour increase in photoperiod above the longest photoperiod at which development proceeds at a maximum rate (which is considered to be 12.5 h).	0.30
P5	°C days	Thermal time from silking to physiological maturity	789
G2	Number	Maximum possible number of kernels per plant.	650
G3	mg/day	Kernel filling rate during the linear grain filling stage and under optimum conditions	6.03
PHINT	°C day	Phyllochron interval; the interval in thermal time between successive leaf tip appearances	48

### **Climate trends of study area.**

Weather data of Kashmir, Shalimar Srinagar was undertaken to observe the trends of maximum, minimum temperature and precipitation. It was observed that average of 10 years weather data from 1985 to 2010, maximum temperature shows an increasing trend ranges from 18.5 °C to 20.5°C . This means there is an increase of 2°C within a span of 25 years. Decreasing trend was observed with respect to precipitation was observed with the same data. The magnitude of decrease was from 925 mm to 650 mm of rainfall which is almost decrease of 275 mm of rainfall in 25 years (Fig 1). Future climate for 2011-2090 from A1B scenario extracted from PRECIS run shows that overall maximum and minimum temperature increase by 5.39 °C (±1.76) and 5.08 °C(±1.37) also precipitation will decrease by 3094.72 mm to 2578.53 (±422.12) (Muslim et al 2015).



**Fig . 1.** Trend of 10 year average yearly mean of maximum temperature, minimum temperature and rainfall at Shalimar, Srinagar (J&K), India.

Simulated effect elevated ambient maximum and minimum temperature by 2°C (E<sub>2</sub>) resulted early anthesis of maize by 7 days. Further elevation of maximum and minimum temperature by 4°C (E<sub>4</sub>) anthesis of maize was earlier by 14 days with a deviation %age of -18. However elevation of CO<sub>2</sub> both at +100 ppm and +200 ppm alone or in combination with maximum and minimum temperature failed to show any impact on anthesis date (table 4). Simulated effect elevated ambient maximum and minimum temperature by 2°C (E<sub>2</sub>) resulted early maturity of maize by 15 days. Further elevation of maximum and minimum temperature by 4°C (E<sub>4</sub>) maturity of maize matured earlier by 26 days with a deviation %age of -20. However elevation of CO<sub>2</sub> both at +100 ppm and +200 ppm alone or in combination with maximum and minimum temperature failed to show any impact on anthesis date..



212 **Table 4.Simulated Days to Anthesis of Maize as function of enhanced levels of temperature and CO<sub>2</sub>.**

Environmental modification	Simulated Days to Anthesis	Deviation of Anthesis from normal	%age of deviation
E <sub>1</sub> (control )	80	-	-
E <sub>2</sub> (Max, Min temp +2)	73	7	-9
E <sub>3</sub> (Max, Min temp +4)	66	14	-18
E <sub>4</sub> ( CO <sub>2</sub> +100ppm	80	0	0
E <sub>5</sub> (Max, Min temp +2 and CO <sub>2</sub> +100ppm)	73	7	-9
E <sub>6</sub> (Max, Min temp +4 and CO <sub>2</sub> +100ppm)	66	14	-18
E <sub>7</sub> ( CO <sub>2</sub> +200ppm)	80	0	0
E <sub>8</sub> (Max, Min temp +2 and CO <sub>2</sub> +200ppm)	73	7	-9
E <sub>9</sub> (Max, Min temp +4 and CO <sub>2</sub> +200ppm)	66	14	-18

213

214 **Table 5.Simulated Days to Maturity of Maize as function of enhanced levels of temperature and CO<sub>2</sub>.**

Environmental modification	Simulated Days to Maturity	Deviation in Maturity from normal	%age of deviation
E <sub>1</sub> (control )	131	–	-
E <sub>2</sub> (Max, Min temp +2)	116	15	-11
E <sub>3</sub> (Max, Min temp +4)	105	26	-20
E <sub>4</sub> ( CO <sub>2</sub> +100ppm	131	0	0
E <sub>5</sub> (Max, Min temp +2 and CO <sub>2</sub> +100ppm)	116	15	-11
E <sub>6</sub> (Max, Min temp +4 and CO <sub>2</sub> +100ppm)	105	26	-20
E <sub>7</sub> ( CO <sub>2</sub> +200ppm)	131	0	0

E <sub>8</sub> (Max, Min temp +2 and CO <sub>2</sub> +200ppm)	116	15	-11
E <sub>9</sub> (Max, Min temp +4 and CO <sub>2</sub> +200ppm)	105	26	-20

**Table 6. Simulated Tops weight Grain weight and their deviation of Maize as function of enhanced levels of temperature and CO<sub>2</sub>.**

Environmental modification	Simulated Tops weight kg/ha	Deviation in Tops weight kg/ha (%)	Simulated Grain weight kg/ha	Deviation in Grain weight kg/ha (%)
E <sub>1</sub> (control )	26479	-	4441	-
E <sub>2</sub> (Max, Min temp +2)	24343	-8	3189	-28
E <sub>3</sub> (Max, Min temp +4)	22231	-16	2561	-42
E <sub>4</sub> ( CO <sub>2</sub> +100ppm)	26935	2	4573	3
E <sub>5</sub> (Max, Min temp +2 and CO <sub>2</sub> +100ppm)	24710	-7	3278	-26
E <sub>6</sub> (Max, Min temp +4 and CO <sub>2</sub> +100ppm)	22615	-15	2643	-40
E <sub>7</sub> ( CO <sub>2</sub> +200ppm)	27172	3	4644	5
E <sub>8</sub> (Max, Min temp +2 and CO <sub>2</sub> +200ppm)	24916	-6	3327	-25
E <sub>9</sub> (Max, Min temp +4 and CO <sub>2</sub> +200ppm)	22813	-14	2687	-39

Maximum simulated tops and grain weight Kg/ha of 27172 was recorded with (E7) at enhanced level of CO<sub>2</sub> with 200 ppm followed by E4 (CO<sub>2</sub> +100ppm) with 26935 kg /ha i.e. when CO<sub>2</sub> was enhanced by 100 ppm than normal . Magnitude of increase was 3% at 200 ppm enhanced CO<sub>2</sub> level and 2 % at 100 ppm enhanced. However increase in temperature there was a decrease in tops weight when tried alone or with combination of CO<sub>2</sub>. Least tops weight of 22231 kg/ha was recorded when temperature was increased by +4 °C with deviation of -16% as compared to normal, which was closely followed by E6 (Max, Min temp +4 and CO<sub>2</sub> +100ppm) with 15 %. Enhanced level of temperature with + 2 °C alone or in combination

with enhanced levels of CO<sub>2</sub> showed only -5 to -6 % deviation in tops weight than normal environment (Table 6, fig 2).

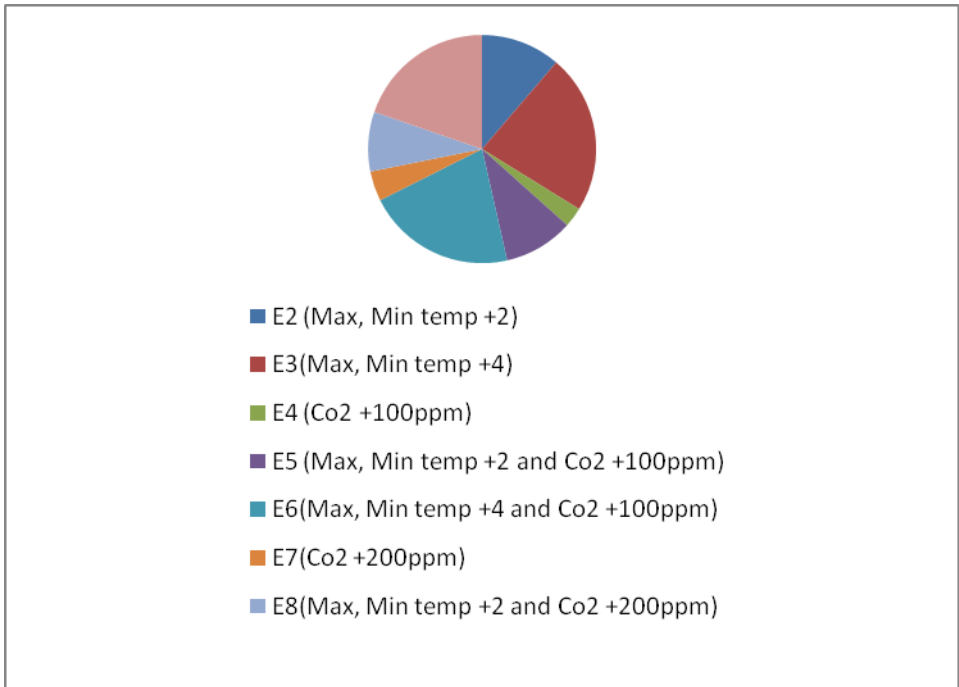


Fig: 2 Deviation in tops weight % as function of change in temperature and CO<sub>2</sub> levels.

Maximum simulated Grain weight Kg/ha of 4644 was recorded with (E7) at enhanced level of CO<sub>2</sub> alone with 200 ppm followed by (E4) i.e. when Co<sub>2</sub> was enhanced by 100 ppm than normal with grain weight of 4573 kg/ha. Magnitude of increase was 5% at 200 ppm enhanced Co<sub>2</sub> level and 3 % at 100 ppm enhanced Co<sub>2</sub> level. However enhanced levels of temperature shows drastic decrease in grain yield.. When crop was tested at enhanced level of max and min temperature E<sub>2</sub> (Max, Min temp +2<sup>0</sup>C) the grain yield recorded was 3189 kg/ha with a decrease in yield of 28 % (fig 7). Further more increase in the temperature from 2<sup>0</sup>C to 4<sup>0</sup>C(both min and max) the magnitude of decrease was 42% with the grain yield of 2561 kg/ha our findings are in agreement with (Yi Zhang et al 2019) (Jones and Thornton, 2003; Tao and Zhang, 2010; Ruane et al., 2013; Bassu et al., 2014). Enhanced levels of Maximum and minimum temperature by 2<sup>0</sup>C and 4<sup>0</sup>C in combination with 100ppm and 200 ppm enhanced levels of CO<sub>2</sub> the magnitude of decrease was 26 %, 40% , 25% and 39% respectively (Table 6 fig 3)

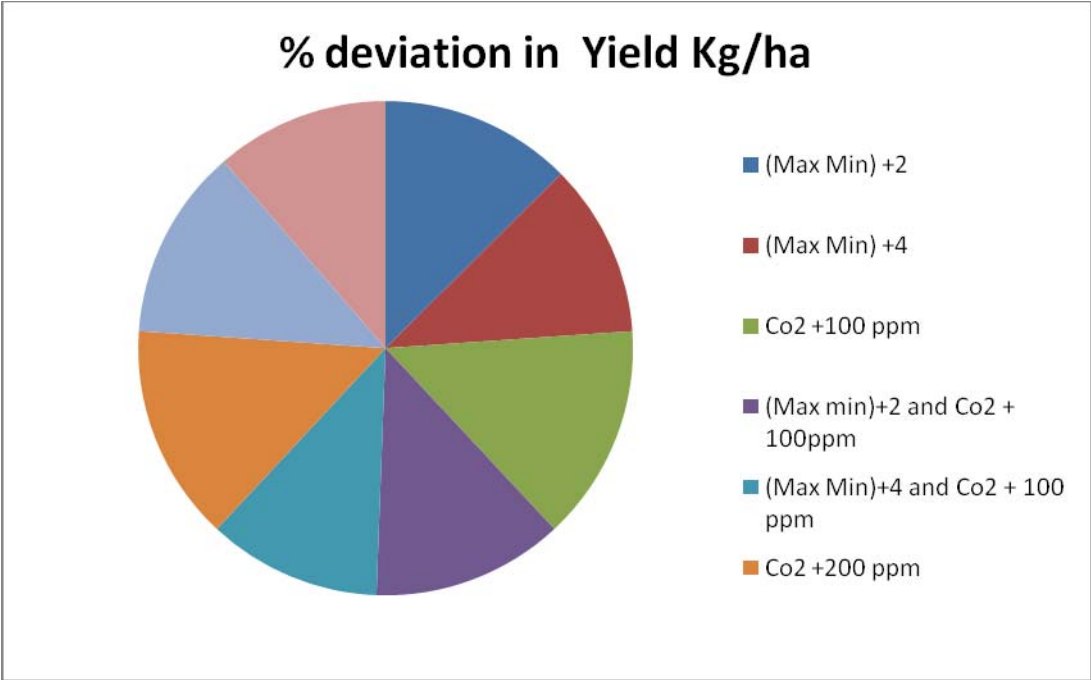


Fig: 3.Deviation in Grain weight % as function of change in temperature and CO<sub>2</sub> levels.

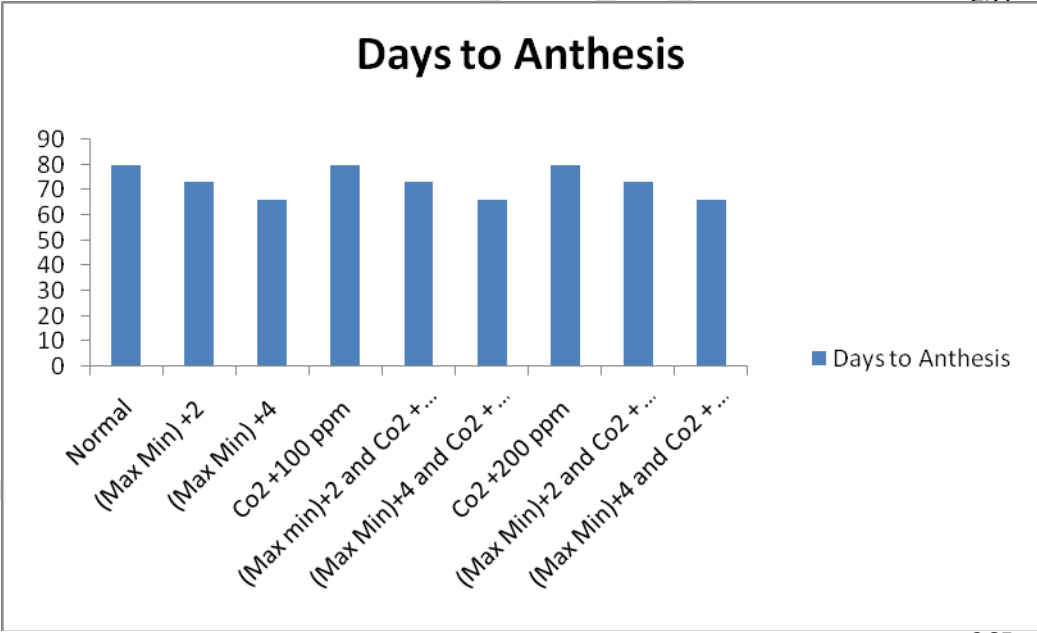


Fig: 4 Days to anthesis as function of change in temperature and CO<sub>2</sub> levels.

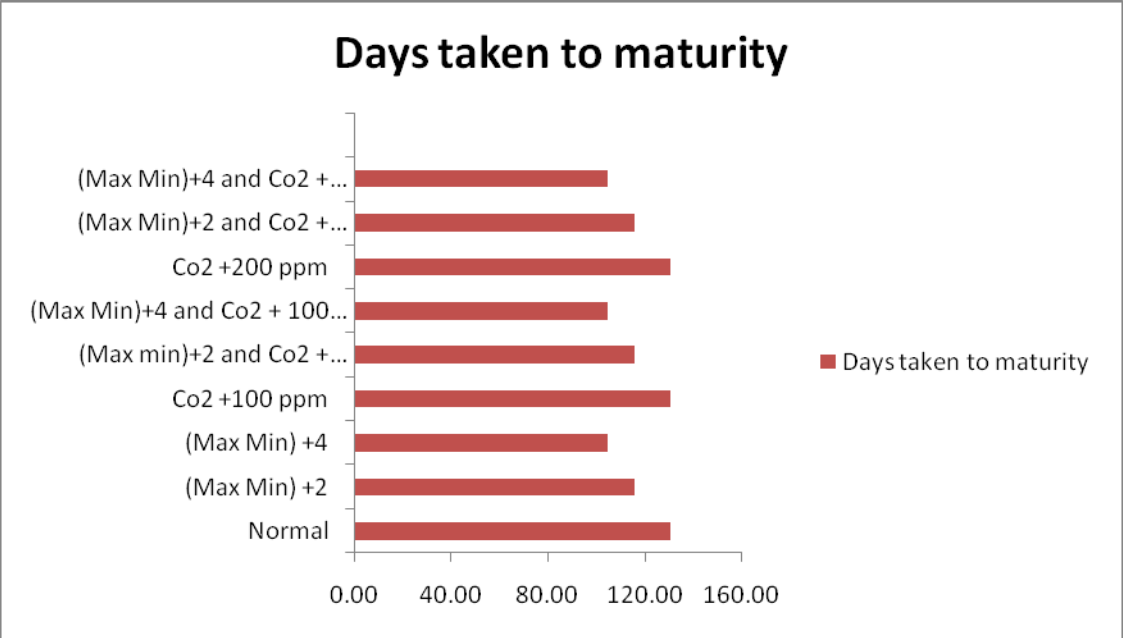


Fig: 5. Days to Maturity as function of change in temperature and CO<sub>2</sub> levels.

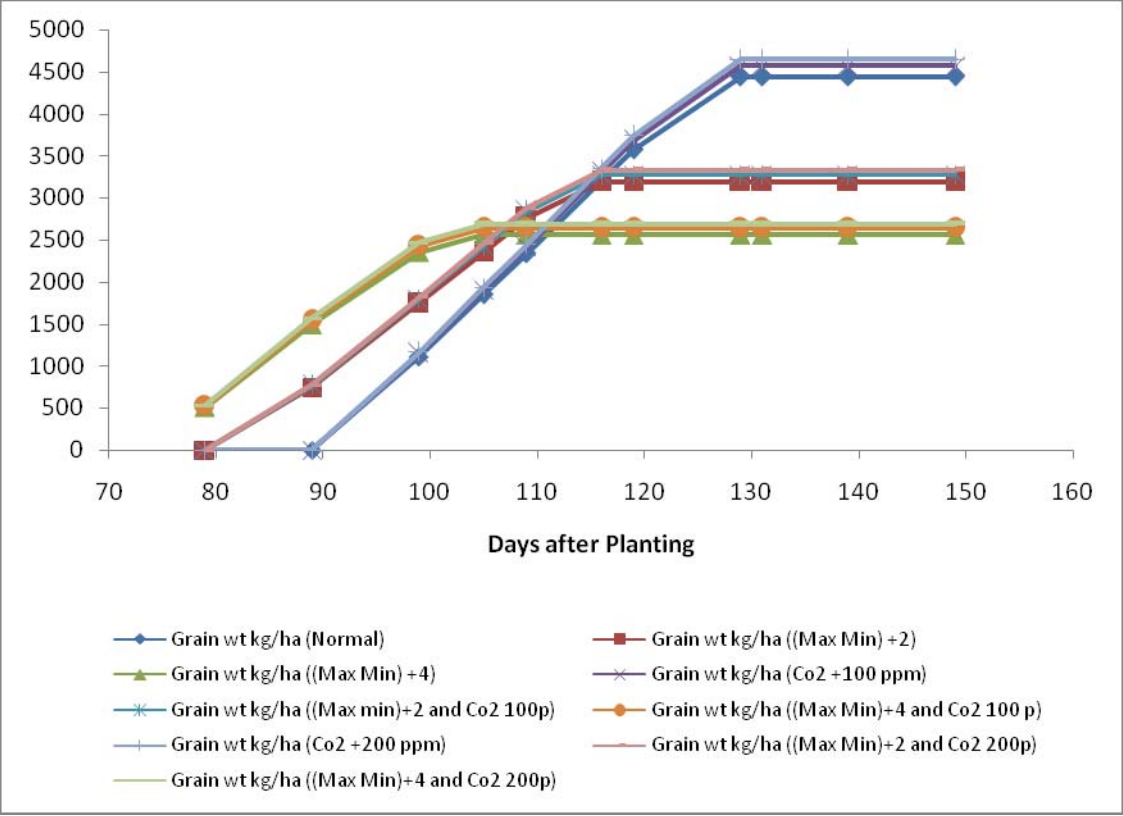


Fig: 6. Grain weight Kg/ha as function of change in temperature and CO<sub>2</sub> levels.

Ceres Maize model DSSAT 4.5, shows that increase in the temperature by 2<sup>0</sup>C or 4<sup>0</sup>C alone or in combination with the enhanced levels of CO<sub>2</sub> with 100 ppm and 200ppm the grain yield of maize shows drastic decrease in yield under temperate conditions of Kashmir , Shalimar . This may be due to the fact that at higher temperature the plants shift earlier from vegetative to reproductive phase as in (fig 4 and 5 less number of days were taken to anthesis and maturity at higher levels of temperature, which causes more biomass but which lower portioning of drymatter towards reproductive , ultimately lower grain yield.

## **Conclusion.**

Climate change impacts on crop yield are often integrated with its effects on water productivity and soil water balance. Global warming will influence temperature and rainfall, which will directly have effects on the soil moisture status and groundwater level. Crop yield is constrained to crop varieties and planting areas, soil degradation, growing climate and water availability during the crop growth period. With temperature increasing and precipitation fluctuating, water availability and crop production will decrease in the future. Using DSSAT 4.5 Assuming management practices continue as present, Ceres maize model predicted that enhanced level of CO<sub>2</sub> upto 200 ppm failed to show any impact on crop growth and yield. However increase in temperature by 2<sup>0</sup>C to 4 <sup>0</sup>C alone or in combination with enhanced levels of CO<sub>2</sub> by 100 and 200 ppm the growth and yield of maize was drastically declined with an reduction of about 40% in grain yield. Further studies needs to be carried out for authentications of results.

## **References:**

Agricultural Research Data Book. 2011.IASRI Library Avenue Pusa New Delhi .P24.(ICAR Krishi Bhawan New Delhi 110114).

Bassu, et al., 2014. How do various maize crop models vary in their responses to climate change factors? Glob. Change Biol. 2014 (20), 2301–2320. <http://dx.doi.org/10.1111/gcb.12520>.

Boote, K.J., 1999. Concepts for calibrating crop growth models. In *DSSAT Version 3*, 4:181-194.

305 Boote, K.J., Jones, J.W. and Pickering, N.B. 1996. Potential use and limitations of crop  
306 models. *Agronomy Journal* **88**: 704-716.

307 Boote, K.J., Jones, J.W. and Pickering, N.B. 1996. Potential use and limitations of crop  
308 models. *Agronomy Journal* **88**: 704-716.

309 DES. 2010-11. Economic Survey. Directorate of Economics & Statistics, Government of India

310 Hoogenboom, G., Wilkens, P.W. and Tsuji, G.Y. 1999. *DSSAT v 3 Volume 4*. University of  
311 Hawaii, Honolulu, Hawaii.

312 Hoogenboom, G., Wilkens, P.W. and Tsuji, G.Y. 1999. *DSSAT v 3 Volume 4*. University of  
313 Hawaii, Honolulu, Hawaii.

314 IPCC. 2007a. Climate Change 2007: The Physical Science Basis. Contribution of Working  
315 Group I to the Fourth Assessment Report of the IPCC. In S. Solomon, D. Qin, M. Manning, Z.  
316 Chen, M. Marquis, K.B. Averyt, M. Tignor and H.L. Miller, eds. Cambridge, UK: Cambridge  
317 University Press. 996 pp.

318 Jones, P.G., Thornton, P.K., 2003. The potential impacts of climate change on maize  
319 production in Africa and Latin America in 2055. *Global Environ. Change* **13**, 51–59.

320 Matthews, R.B., Stephens, W., Hess, T., Middleton, T and Graves, A. 2002. Applications of  
321 crop/soil simulation models in Tropical Agricultural Systems, *Advances in Agronomy*. **76**: 31-  
322 112.

323 Matthews, R.B., Stephens, W., Hess, T., Middleton, T and Graves, A. 2002. Applications of  
324 crop/soil simulation models in Tropical Agricultural Systems, *Advances in Agronomy*. **76**: 31-  
325 112.

326 Mohammad Muslim , Shakil Ahmed Romshoo and A. Q. Rather 2015. Paddy crop yield  
327 estimation in Kashmir Himalayan rice bowl using remote sensing and simulation model.  
328 *Environmental Monitoring and Assessment* **187**(6):4564.

329 Ruane, A.C., Cecil, L.D., Horton, R.M., Gordón, R., McCollum, R., Browne, D., Killough,  
330 B., Goldberg, R., Greeley, A.P., Rosenzweig, C., 2013. Climate change impact uncertainties  
331 for maize in Panama: Farm information, climate projections, and yield sensitivities. *Agric.*  
332 *For. Meteorol.* **170**, 132–145.

333 Tsuji, G.Y., Uehara, G. and Balas, S. 1994. *DSSAT v 3*. University of Hawaii,  
334 Honolulu, Hawaii.

335 Tsuji, G.Y., Uehara, G. and Balas, S. 1994. *DSSAT v 3*. University of Hawaii,  
336 Honolulu, Hawaii.

337 Yi Zhang, Yanxia Zhao, Chunyi Wang, and Sining Chen. (2017) Using statistical model to simulate the  
338 impact of climate change on maize yield with climate and crop uncertainties. *Theoretical and Applied*  
339 *Climatology* **130**:3-4, 1065-1071. Online publication date: 22-Sep-2016.

340 **Keywords or phrases:** DSSAT, Maize, climate Change , Yield , growth

UNDER PEER REVIEW