

Monitoring system design based on kingview sewage treatment

Comment [N1]: Which system? You need to mention the system in order to give the reader a proper direction from the onset

Comment [N2]: If this is a trademark name the first letter should be uppercase and the word italicized

Abstract: In order to grasp the various information existing in the sewage treatment process in time, this paper establishes the monitoring system screens such as grille, sump, blower room and alarm event on the basis of Kingview software and simulates by writing command language in the screen. The operation fully demonstrates the powerful functions of Kingview in designing the monitoring system and realizes the dynamic control of domestic sewage treatment. At the same time, it shows that the monitoring system designed for sewage treatment in this paper has great practical significance in domestic sewage treatment.

Comment [N3]: You have to recast the abstract to include more clearly what you did, how you did it, what you found out and the significance of your findings.

Comment [N4]: This appears to suggest that there is no monitoring system in existence. If otherwise, it should read 'a monitoring system'

Keyword: Kingview; sewage disposal; monitoring system; PLC

Comment [N5]: Write in full please

1 Introduction

Whether it is rivers, lakes, seas or country ditches, water pollution threatens the physical and mental health of human beings with its unpredictable existence and destroys our earth home. For human beings, water pollution is the severe punishment brought by nature. It twines around us like a nightmare and harms every tiny life on earth^[1]. Water is the carrier of life. If the carrier is damaged, the human beings living on it will be punished or even seriously injured. Domestic sewage belongs to environmental pollution. Its damage can seriously damage the physical and mental

Comment [N6]: Add 'in'

Comment [N7]: 'the earth' will be more appropriate

Comment [N8]: Not so sure about this. Was it really brought about only by nature or human activities also?

Comment [N9]: Confirm that this conforms to the journal instructions on citing references

Comment [N10]: Does not make sense. Reframe.

health of human beings and the ecology of nature ^[2]. The main pollutants in domestic sewage are organic pollutants, biological pollutants, nitrogen, phosphorus compounds and other harmful substances. If it is discharged into non-polluting water without treatment, it will make the receiving water worse and even make the water body eutrophic, which will cause the spread of water disease while causing biological death of the water body. Thereby destroying the ecological environment and affecting people's health. Therefore, the treatment of water pollution is extremely urgent. At present, developed countries have achieved the effect of tertiary sewage purification. China started to learn sewage treatment technology in a short time, so that we are still behind the technology and equipment of developed countries.

Comment [N11]: polluted

Comment [N12]: 'body, thereby'

Comment [N13]: Replace with 'recently'

Automatic control of sewage treatment has great advantages in efficiency, capacity and cost, which can save costs in a wide range. China's sewage treatment automation technology has been nearly 30 years old and it was a stage of rapid development in 1980-1989. Among them, the large-scale sewage treatment plant built in 1984 used domestically produced equipment and the construction of the sewage plant accelerated China. The development of sewage treatment has made China's sewage treatment technology scale and industrialized. After that, many sewage plants have been built. By the end of 2005, the efficiency of sewage treatment had been greatly improved, reaching 50%, which is a great progress and development. In foreign countries, the automatic control of sewage treatment is much earlier than that of China. The reason is that developed countries can integrate automatic control technology into network and information technology. It develops rapidly in network

Comment [N14]: '1980-1989 was a period of rapid development'

communication and field bus, such as applying SCADA technology and DCS system to sewage treatment. In addition, developed countries attach importance to the research of PLC, and have developed control units with reasonable price and small intelligence at different times, such as Mitsubishi's FX2N series, Omron's Ω series, Mitsubishi K series and so on. Western countries have realized simple control of the system very early. By simplifying the complicated program, the user can easily master its operation method instead of the cumbersome manual operation. The degree of automation has risen by a certain height. For example, in order to evaluate the possible environmental, economic and technical evaluations of different systems properly, Małgorzata Kacprzak et al proposed a number of selected decision-making tools, namely Waste Disposal End Criteria and Life Cycle Assessment ^[3]. Therefore, in the sense of circular economy “from waste to resources”, some basic criteria for optimal selection were proposed to make people recognize the importance of sludge as a valuable substance and the potential dangers associated with the application of these strategies.

With the wide application of DCS in industrial control, more and more configuration tools are used to develop control system application software. Any automatic system is composed of objects and automatic devices. As people pay more attention to the level of automation, traditional application software has been unable to keep pace with the development of automation, and cannot meet the needs of industrial control ^[4]. When developing the system application software, the change of its control object will lead to the modification of the source program and extend the

Comment [N15]: Write in full before abbreviation

Comment [N16]: Write in full before abbreviation

Comment [N17]: Trademarks names. Write in italics

Comment [N18]: ‘performances’ would be more appropriate

development cycle. It is difficult for the new programmer to modify the source program designed by the original programmer. The fast changing PC technology and control technology have changed the original status quo with the emergence of Configuration software, so that users do not need to change the complex source code.

Because the configuration software enables the control engineers who have not mastered the rich computer expertise to easily master the use of methods in the case of lack of operational experience, it saves a lot of tedious programming work for industrial control and improves the development efficiency of automatic control. In addition to being applied in small industrial control systems, configuration software is also the main part of developing human-machine interface and monitoring system in large SCADA systems ^[5].

Comment [N19]: Not appropriate

2 Basic methods of sewage treatment

The method of sewage treatment needs to consider the quality of the sewage and the standard of discharge. Whether the treatment cost is in line with the local development level and whether the recovery can meet its economic value, etc., in order to determine the treatment method applicable to a certain area. So determine a suitable process is not blindly following the trend. Sewage treatment can be classified according to treatment method and degree.

Comment [N20]: 'determining'

2.1 Classification by processing method

Different types of hazardous substances correspond to different types of sewage and different types of sewage correspond to different countermeasures. According to

water treatment measures, sewage treatment methods can be divided into three categories. Among the three treatment methods, physical action is the core principle of physical measures. Since sewage contains many floating wastes and pollutants on the surface, the physical action is to separate it from sewage. Physical processing methods generally include the following: gravity center, gravity separation method and screening throttling method, etc. ^[6]. Chemical treatment can produce neutralization, REDOX and other chemical reactions on the basis of adding drugs. In addition, it can also carry out mass transfer effects, such as adsorption and membrane treatment technology. It is a treatment measure which converts harmful substances into substances that do no harm to people on the basis of chemical reactions and mass transfer. Biological treatment is advocated and used in the development of modern society widely. It uses the metabolism of microorganisms to convert soluble or insoluble organic matter in sewage into non-threatening substances. There are many types of microorganisms. But the individuals are so small that they cannot be recognized by the naked eye, and can rapidly multiply during growth ^[7]. Only by understanding and mastering the different characteristics of different microorganisms can we cultivate microorganisms in the sewage treatment process to obtain better purification of sewage.

3 Overview of configuration software

Configuration is any combination of modules. The main characteristics of general configuration software are: (a) Continuity and extensibility. For applications developed with general configuration software when the site (including hardware

Comment [N21]: 'chemicals' more appropriate

Comment [N22]: 'carried out using'

Comment [N23]: 'microorganisms but'

Comment [N24]: Be consistent

equipment or system structure) or user requirements change. It is easy to update and upgrade the software without many modifications. (b) Encapsulation. The functions that can be completed by the configuration software are packaged in a user-friendly way. For the user, a complicated project can be completed without much programming language technology (or even programming technology). All the features required. (c) Universality. According to the actual situation of the project, each user can use the I/O driver of the underlying equipment (PLC, smart meter, intelligent module, board, inverter, etc.) provided by the general configuration software, open database and screen production tools. Completing an animated, real-time data processing, historical data and curve coexistence, with multimedia and networking capabilities is not limited by the industry. The earliest general configuration software developed is the configuration software under DOS environment, which is characterized by simple man-machine interface (MMI), gallery, drawing toolbox and other basic functions.

Comment [N25]: 'change, it'

Comment [N26]: This statement is hanging

With the continuous development of PC, more advanced configuration software from abroad has been developed, including iFix by GE Fanuc, InTouch by Wonderware, WinCC by Siemens and Web Access software by BroadWin^[8-9]. As the market demand for configuration software becomes more and more urgent, domestic configuration software also has the bud of gradual development, such as powercontrol, Kunlun tongtai MCGS and Kingview series of control technology and so on. The Kingview 6.53 developed by Asia Control Technology Company is adopted in this design.

Comment [N27]: italics

Comment [N28]: italics

Comment [N29]: italics

Comment [N30]: italics

Comment [N31]: italics

Comment [N32]: italics

Comment [N33]: italics

Kingview series products account for the largest proportion in the domestic configuration software. Among which Kingview 6.53 in the series products increases the capacity of Kingview and the advantages of large data storage meet the demanding requirements of some customers on the capacity. It has been able to connect thousands of industrial control equipment, including PLC, board card, frequency converter, etc. In addition, Kingview 6.53 adds many communication modes for users to select and users can choose different communication modes according to different situations, including serial communication, field bus, etc. Therefore, Kingview software can well meet the requirements of automatic monitoring of sewage treatment monitoring system.

4 Configuration monitoring system design

The use of Kingview software to build a new project is the only way to complete the design of the monitoring system. The process mainly includes device driver selection definition, variable definition, graphical interface creation, programming animation connection and running debugging ^[10]. These steps are not sequential, but you can configure one process while the other is in progress.

4.1 Connect external equipment PLC

After opening the Kingview software, it is necessary to establish a project named "sewage treatment monitoring system", open the project and configure the COM terminal in the project browser. Click "COM" on the left and create a new one. Because the PLC of Mitsubishi series is used in this design, FX series subordinated to

Mitsubishi is selected. However, when debugging the configuration screen, it is not connected to the PLC. In order to facilitate debugging, the analog device can be used first and the COM port of the sub-control simulation PLC can be used. Device selection is shown in Fig.1, Fig. 2:

Comment [N34]: 'Figures 1 and 2.' Only use 'Fig.' in labeling figures

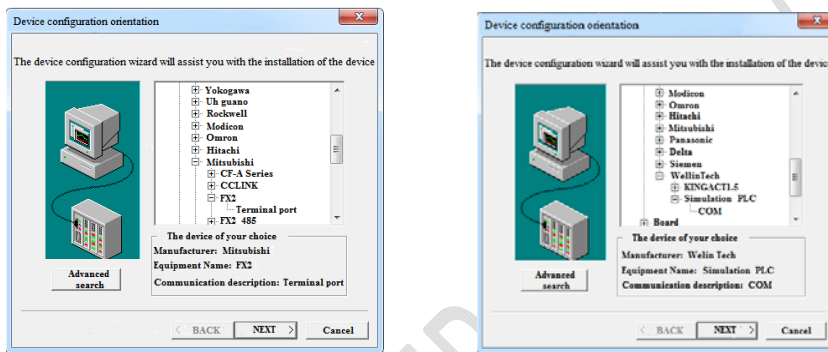


Fig.1 Device configuration wizard diagram Fig. 2 Debug device connection wizard

4.2 Defined variable

In order to reflect the properties of the controlled object with data, it is necessary to create a real-time database in the configuration king. Variables in the real-time database can reflect the properties of the object and achieve the purpose of control ^[11], such as liquid level, temperature and so on. In addition, it can also set variables representing operators in the configuration king, similar to valves, switches and so on. If a variable is newly created in the data dictionary, a dialog box will appear for the corresponding setting, such as the level of the sump, which is set as I/O integer. Register as INCREA incremented by 1 and the read/write attribute as read/write. In addition, the alarm function of the level can be set to give an alarm when the upper

the system to observe and monitor the system. The following Fig.5 is the login interface.

Comment [N39]: Write well



Fig.5 Login interface

(2) Main screen design: In the main screen, plane dynamic graph is processed, and there are two keys: logout and screen switch. Logout is the key for users to log out. When the key is pressed, the page will return to the login interface. Screen switch is a menu-type button. When pressing the button, the name of each sub-screen will appear below and users can choose one to enter. Fig.6 shows the main design drawing:

Comment [N40]: Write in full all through

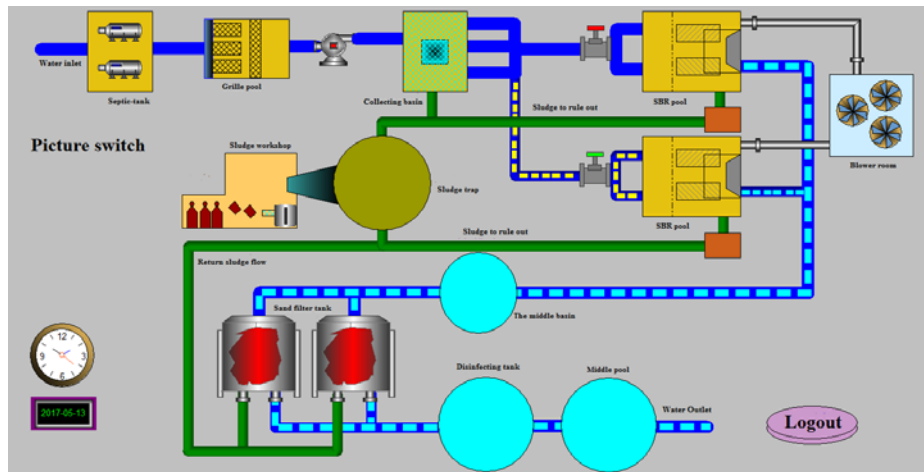
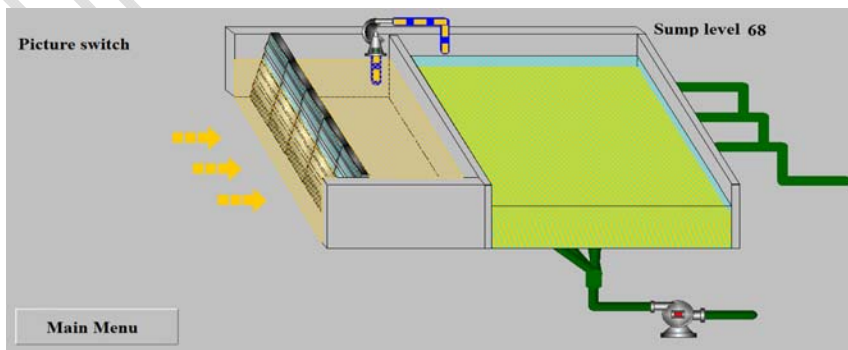


Fig.6 Main screen of the system

(3) Split screen design: it is mainly composed of grille, collecting pool, SBR pool, blower room and trend curve et al.

A、Grilles, Sinks

In this design, the grille tank and the collecting tank are combined. The inlet pump is used as the connecting medium and the sewage flows into the collecting tank through the pump between the grille decontamination machine and the collecting tank. The screen of grille and collecting pool is shown in Fig.7:



Comment [N41]: In full

Fig.7 Grilles, Sinks

B、 SBR pool

SBR pool is the core part of sewage treatment. When the water inlet valve is opened, the sewage needs to go through the processes of water inflow, reaction, precipitation and drainage in SBR pool to achieve the effect of water purification. It is equipped with aerator, water decanter and other equipment to help complete the treatment process. The SBR pool screen is shown in Fig.8:

Comment [N42]: In full

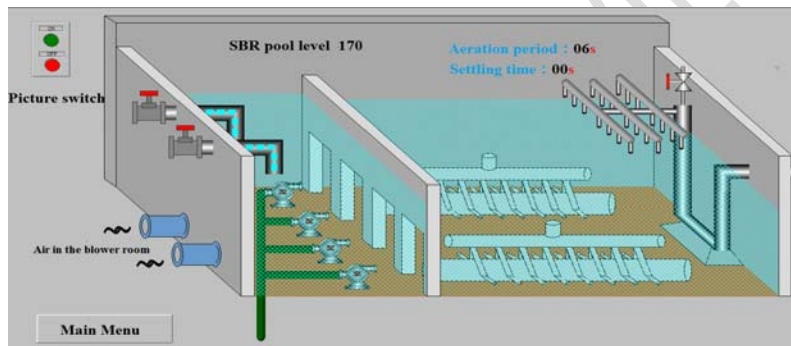


Fig.8 SBR pool

C、 Blower room

There are 3 roots blowers in the blower room, among which the third one is used as an emergency standby. The role of the blower is to provide air for the reaction pool and allow the sewage to be fully aerated. Before the liquid level of the SBR tank rises to the upper limit, the Roots vent valve of the blower room is opened, and when the liquid level of the SBR pool rises to the programmed upper limit, the water is no longer discharged into the pool. At this point, the roots blower is turned on, the roots vent valve is closed and the fan is turned off when the aeration time is reached. Then

the vent valve is opened again and turned off after a while. Among them, the opening and closing degree of fan outlet valve are controlled by the total amount of DO in water. The picture of blower room is shown in Fig.9:

Comment [N43]: In full

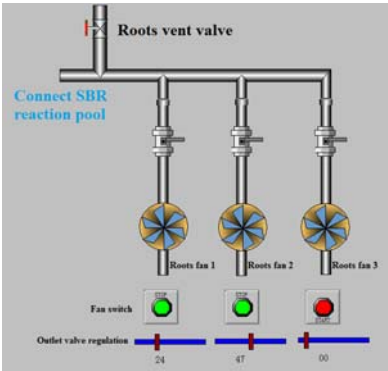


Fig. 9 Blower room

D、Real-time trend curve

The real-time trend curve is a synchronous record of the addition and subtraction of variables and time changes during the process, allowing operators to observe changes in the water level in the pool. The real-time trend curve is shown in Fig.10:

Comment [N44]: In full

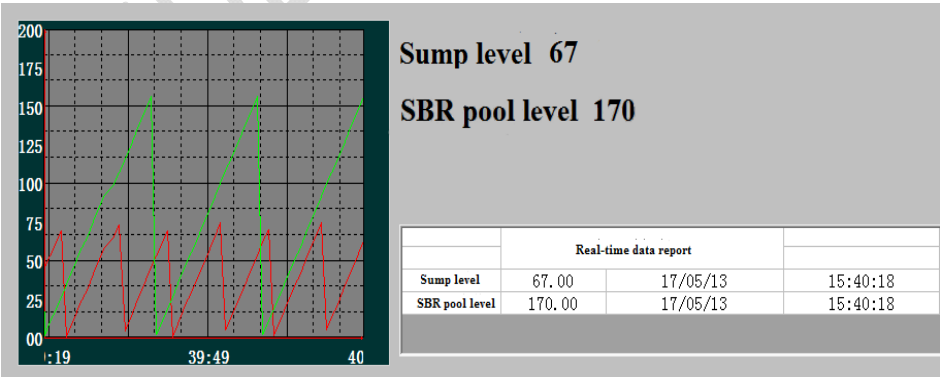
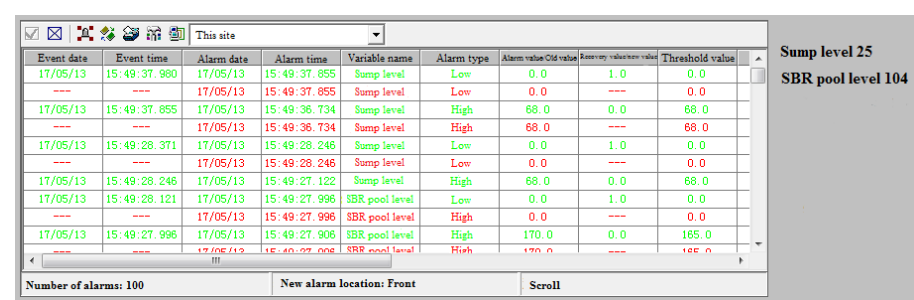


Fig.10 Real-time trend curve

E、Alarms and events

This screen will reach the alarm state according to the upper and lower limits set by variables. For example, when the level of the collecting tank is higher than 68, the alarm state will reach and the event will be recorded in the table. The alarm and event screen is shown in Fig.11:



Event date	Event time	Alarm date	Alarm time	Variable name	Alarm type	Alarm value	Old value	Recovery value	Threshold value
17/05/13	15:49:37.980	17/05/13	15:49:37.855	Sump level	Low	0.0	1.0	0.0	
---	---	17/05/13	15:49:37.855	Sump level	Low	0.0	---	0.0	
17/05/13	15:49:37.855	17/05/13	15:49:36.734	Sump level	High	68.0	0.0	68.0	
---	---	17/05/13	15:49:36.734	Sump level	High	68.0	---	68.0	
17/05/13	15:49:28.371	17/05/13	15:49:28.246	Sump level	Low	0.0	1.0	0.0	
---	---	17/05/13	15:49:28.246	Sump level	Low	0.0	---	0.0	
17/05/13	15:49:28.246	17/05/13	15:49:27.122	Sump level	High	68.0	0.0	68.0	
17/05/13	15:49:28.121	17/05/13	15:49:27.996	SBR pool level	Low	0.0	1.0	0.0	
---	---	17/05/13	15:49:27.996	SBR pool level	High	0.0	---	0.0	
17/05/13	15:49:27.996	17/05/13	15:49:27.906	SBR pool level	High	170.0	0.0	165.0	
---	---	17/05/13	15:49:27.906	SBR pool level	High	170.0	---	165.0	

Number of alarms: 100

New alarm location: Front

Scroll

Sump level 25

SBR pool level 104

Fig.11 Alarm and event screen

F、Reuse of recycled water

The water reuse system advocates the concept of reducing water use, reducing energy consumption and strengthening pollution control. Therefore, when designing the system, various advanced and integrated technologies are used to respond to the concepts advocated by the system. The water filtration system consists of filtration and disinfection parts. The filtration part uses a sand filter tank containing manganese sand and anthracite coal, which can remove iron ions and solid colloidal particles in the water. The water passing through the sand filter tank is added to the disinfection tank for dosing and disinfection to reach the standard of effluent. The reclaimed water reuse system is shown in Fig.12:

Comment [N45]: Why suddenly 68? Your design hardly had any specifications before now. When designing a system of this nature, the overall capacity, the major flow rates and the like should be specified. You may need to do so to strengthen your paper.

Comment [N46]: In full

Comment [N47]: ‘were’

Comment [N48]: In full

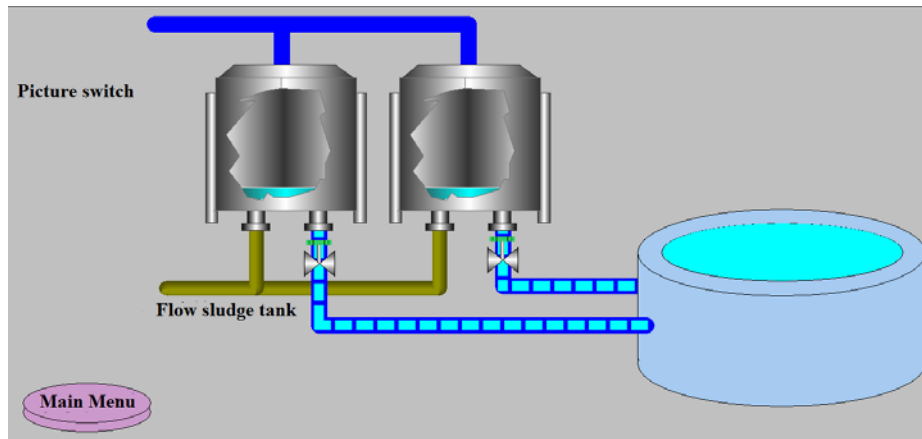


Fig.12 Water reuse system

5 Conclusion

This paper used Kingview to design the main upper computer monitoring system screen, which realized the operator's understanding and mastery of the current operating status of sewage treatment, so that users can adjust the corresponding data according to the discovered problems. In addition, it can also alarm the corresponding over-limit problem and collect and record the variable change data. In this system, the staff can understand the process and status of sewage treatment, the change and trend of parameters in real time. So as to optimize and improve the sewage treatment process in time. Therefore, through the use of Kingview software to complete the monitoring system screen drawing can achieve the basic requirements and expected results.

References

- [1] Xinkai Liu. Current situation and prospect of municipal sewage treatment at home and abroad. Disaster preparedness expo. 2005, 5:25-27.
- [2] Wenjun Wang, Daoming Huang. Research progress of river ecological restoration at home and abroad. Journal of water ecology. 2012, 33(4):142-146.
- [3] Małgorzata Kacprzak, EwaNeczaj, Krzysztof Fijałkowski. Sewage sludge disposal strategies for sustainable development. Environmental Research. 2017,156:39-46.
- [4] Zhuowei He. On the development status and application prospect of programmable controller. Electronic test. 2014, 23:130-131.
- [5] ArtursBartusevics, LeonidsNovickis. Models for Implementation of Software Configuration Management. Procedia Computer Science. 2015,43:3-10.
- [6] Wenqiong Gao. Municipal sewage treatment and recycling technology. Resource conservation and environmental protection. 2014,51:43-45.
- [7] Xingping Liu, Xiaomei He. Municipal wastewater technology and development. water resources protection. 2003,1:25-28.
- [8] Ivan vogor, Ivica Crnkovi, Neven Vrek. An extensible framework for software configuration optimization on heterogeneous computing systems: Time and energy case study. Information and Software Technology.2019, 105:30-42.

Comment [N49]: Sort out the boxes

[9]I.-Hsin Chou. Secure Software Configuration Management Processes for nuclear safety software development environment. Annals of Nuclear Energy. 2011, 38:2174-2179.

[10]Yahui Mu. Configuration king software practical technology. 1st ed. Zhengzhou: Yellow River conservancy press. 2012, 4-5.

[11]YukioSadahiro. A method for comparing numerical variables defined in a region. Computers, Environment and Urban Systems. 2013,41:65-74.

UNDER PEER REVIEW