

Separation, analysis and validation of metal ions in aqueous samples using capillary electrophoresis

ABSTRACT

Capillary electrophoresis (CE) has been developed as one of the powerful separation techniques for the analysis of inorganic and organic ions in complex matrices in the recent past. In aqueous samples, most of the inorganic ions are having weak absorption profiles in the UV-Vis region of the spectrum. These low absorption profile ionic species are commonly detected by indirect UV absorbance with the addition of an absorbing co-ion (chromophore) into the electrolyte. The inorganic cations often require an additional complexing agent to selectively alter their similar mobilities and proper separation. The indirect detection at 214 nm was performed with α -hydroxyisobutyric acid (α -HIBA)-4-aminopyridine background electrolyte (BGE) that has a characteristic absorbance at 214 nm. The BGE was applied for the separation, analysis, and validation of metal ions in water samples. The metal ions such as K^+ , Na^+ , Ca^{2+} , Mg^{2+} , Mn^{2+} , Fe^{2+} , Cd^{2+} , Pb^{2+} , Ni^{2+} and Zn^{2+} were separated successfully in this study. Also, the effect of electrolyte pH, applied voltage and injection time for the separation of cations was investigated.

Keywords: Water analysis; Background electrolyte composition; Complexation; Cations

1. INTRODUCTION

Inorganic and organic ions released to the environment may cause risks to the balance of nature. The ions appear to contaminate the water supply systems (surface water and drinking water) and are found as concentrates in ecological systems [1]. Environmental pollutants are a significant hazard to human health, among them trace elements can be beneficial or harmful effects depending on their concentration and chemical form in the living organisms. In addition to the common elements (sodium, calcium, magnesium etc.), a number of trace elements (selenium, zinc, molybdenum, manganese, etc.) are considered essential with specific biological functions at relatively low levels. However, when present in excess, these elements can be harmful [2, 3].

Detection of cations and anions can be performed using direct and indirect modes of detection. Direct refers to an analytical signal related directly to the chemical or physical properties of each cation or anion (for example, the energy of emitted X-rays). Indirect mode of detection refers to signals that are non-specific for the cation or anion and are obtained from a transformed species containing the cation or anion (for example, the UV-Vis spectrum of complexed metal ion) or from a species containing no cation or anion from the sample (for example, the signal from the background electrolyte in indirect UV-Vis or fluorescence detection).

The indirect mode of detection requires UV-absorbing species (chromophore) and complexing reagents. In cation analysis, a complexing ligand must be added to the background electrolyte to provide adequate separation by enhancing the difference in mobility among the cations. In addition, the separation buffer or background electrolyte

36 contains a chromophore that provides a background level of absorption at the detection
37 wavelength. The chromophore is displaced by the analyte ions and a decrease in the
38 background absorption is measured when the analyte is in the detector window [4]. In this
39 paper we report on α -hydroxyisobutyric acid (α -HIBA)-4-aminopyridine background
40 electrolyte (BGE) employed for the separation, analysis, and validation of the cations K^+ ,
41 Na^+ , Ca^{2+} , Mg^{2+} , Mn^{2+} , Fe^{2+} , Cd^{2+} , Pb^{2+} , Ni^{2+} and Zn^{2+} . In addition, we have also included the
42 investigation pertaining to the effect of electrolyte pH, applied voltage and injection time for
43 the separation of cations.

44

45 2. MATERIAL AND METHODS

46

47 2.1. Instrumentation

48 The CE analysis was performed on a Prince Technologies (Emmen, Netherlands) capillary
49 electrophoresis system equipped with a power supply (0 - \pm 35 kV) and UV detector (PU
50 4225 UV detector, Philips) with wavelength of 190-820 nm. Fused-silica capillaries
51 (Polymicro Technology, Phoenix, AZ, USA) of 75 μ m I.D, (360 μ m O.D) and 108.5 cm long
52 (96.5 cm effective length) were used. The applied voltage was +25 kV. Samples were
53 introduced into the capillary by the hydrodynamic mode (50 mbar) for 12-24 s. Data
54 acquisition and analysis (DAX) software from Prince Technologies was used for the control
55 of instrument settings. All experiments were conducted at 25°C. The current was monitored
56 for all evaluated back ground electrolytes and was in the range of 8 to 11 μ A.

57

58 2.2 Materials

59 Manganese, Cadmium, Zinc and Lead (all Spectro sol grades) were obtained from Fluka
60 (Buchs, Switzerland). $MgCl_2 \cdot 6H_2O$, Copper (Spectro Sol), Nickel (Spectro Sol) were obtained
61 from Merck (Darmstadt, Germany). α -HIBA (98%), 4-aminopyridine (98%) and H_3PO_4 (85%)
62 were from Aldrich (Steinheim, Germany). NaOH (99%) and HCl (99%) were from Riedel-
63 deHaen (France). $CaCl_2 \cdot 2H_2O$ (97%) and $FeSO_4 \cdot 7H_2O$ (97%) were from NT laboratory
64 supplies (Johannesburg). NaCl (99%) and KCl (99%) were from PAL Chemicals.

65 2.3 Samples

66 The standard aqueous samples were prepared and stored in polyethylene containers and
67 acidified and then kept in refrigerator at +4 °C. For CE measurements all samples were first
68 screened with CE and their concentration were estimated. When the peak resolution was not
69 satisfactory (high ionic strength) or the ion zones were distorted, the samples were diluted
70 with ultra purified water (Milli-Q water, prepared in the purification unit) and filtered through
71 0.45 μ m membranes to achieve better separation for quantification. The samples were not
72 manipulated by pH adjustment or complexation, because we wanted to analyse them by
73 simulating the natural water conditions as closely as possible.

74 2.4 Conditioning of the capillary

75 New capillaries were conditioned by purging with 1M NaOH solution (30 min), Milli-Q water-
76 ultra pure water (30 min) and running electrolyte (30 min) and the sample was injected with
77 the appropriate method. Capillaries were washed after every change of electrolyte with a 5
78 min rinse of 1 M NaOH solution and then with water and the appropriate electrolyte.

79 2.5 Standard mixtures

80 Metal cation standard solutions were obtained by dilution in Milli-Q water from 1000 mg/L
81 stock solutions. The mixtures for capillary electrophoretic studies were prepared from the
82 stock solutions to the concentrations needed. All mixtures were ultrasonicated daily before
83 use. The stock solutions were kept in a refrigerator, at 4 °C.

84 2.6 Calibration solutions

85 A calibration curve was prepared with 5 mg/L, 25 mg/L, 50 mg/L, 100 mg/L and 200 mg/L
86 concentrations by measuring 25 µL, 125 µL, 250 µL, 500 µL and 1000 µL respectively of
87 each cation in 5 mL volumetric flasks and diluting with Milli-Q water to the mark. The
88 calibration curves were measured only at the ranges suitable for real samples. The linear
89 ranges of each ion were measured at specified injection time.
90

91 3. RESULTS AND DISCUSSION

92
93 The separation of metal ions was accomplished using different complexing agents and UV-
94 absorbing species. The most important optimization parameter for the separation of cationic
95 compounds is the choice of a suitable background electrolyte. In this study,
96 α-hydroxyisobutyric acid and 4-aminopyridine (1:1) BGEs were used. The different
97 concentrations of complexing agent can change the migration order of metal ions since
98 metal complexes have different stability thus mobility at different concentration of complexing
99 agent.

100 3.1 Separation of metal ions

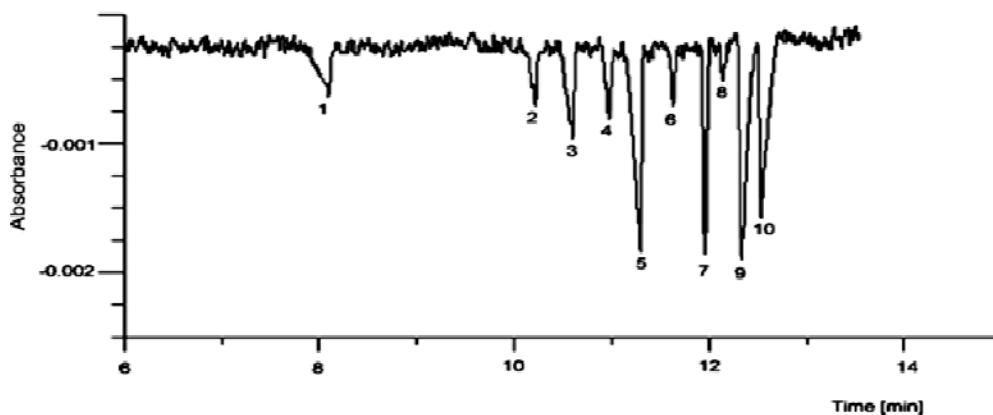
101 In the separation method, α-hydroxyisobutyric acid and 4-aminopyridine (1:1) were used as
102 the complexing agent and background electrolyte respectively for the separation of a
103 mixture of ions. A mixture of 10 metal ions could be separated efficiently using 4-
104 aminopyridine (Figure 1a). All the peaks were completely resolved. Using this method it was
105 possible to detect Cd²⁺ and Pb²⁺ ions. Table 1 shows the quantitative data for migration time,
106 peak areas and corrected peak areas of the metal ions in the standard mixture. Capillary
107 electrophoresis has comparative advantages over AAS, due to: high speed of analysis, high
108 separation efficiency, low consumption of electricity and samples, method robustness and
109 simplicity, good tolerance to sample matrix.
110
111
112

113 **Table 1. The migration time, peak area and corrected peak area of metal ions at a**
114 **concentration of 10 ppm (n = 6).**
115

Metal ion	Migration time, min (RSD)	Peak area, (RSD)	Corrected peak area, (RSD)
K ⁺	7.99(±1.74%)	3.65E-05(±6.74%)	4.57E-06(±6.50%)
Ca ²⁺	10.04(±2.79%)	3.87E-05(±7.13 %)	3.86E-06(±5.26%)
Na ⁺	10.41(±2.83%)	6.47E-05(±4.85%)	6.22E-06(± 4.72%)
Mg ²⁺	10.77(±3.03%)	3.43E-05(±7.64%)	3.19E-06(±6.48%)

Mn ²⁺	11.07(±3.16%)	0.000138(±8.05%)	1.25E-05(±5.44%)
Fe ²⁺	11.38(±3.36%)	2.01E-05(±4.85%)	1.76E-06(±3.70%)
Cd ²⁺	11.69(±3.51%)	7.20E-05(±5.86%)	6.17E-06(±2.97%)
Pb ²⁺	11.83(±3.81%)	1.67E-05(±12.04%)	1.42E-06(±11.83%)
Ni ²⁺	12.023(±3.84%)	1.32E-04(±8.46%)	1.10E-05(±5.72%)
Zn ²⁺	12.21(±3.94%)	1.20E-04(±8.36%)	9.85E-06(±5.27%)

116



117

118

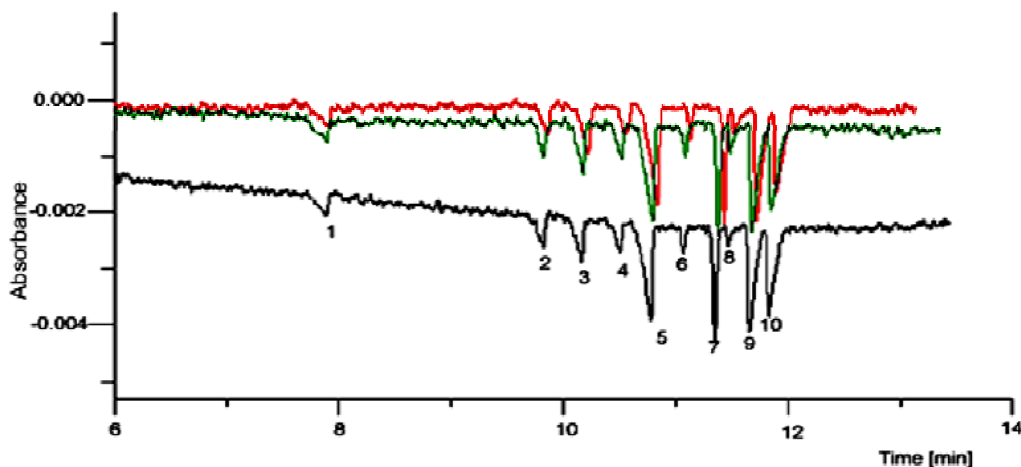
119

120

121

122

Fig.1a Electrophoretic separation of 10 metal ions. Carrier electrolyte, 10 mM 4-amino pyridine and 6.5 mM α -hydroxyisobutyric acid(1:1) (pH 4.5); hydrodynamic injection 18 s; voltage, 25 kV; wavelength, 214 nm. Peaks according to sequence: 1 = K⁺, 2 = Ca²⁺, 3 = Na⁺, 4 = Mg²⁺, 5 = Mn²⁺, 6 = Fe²⁺, 7 = Cd²⁺, 8 = Pb²⁺, 9 = Ni²⁺, 10 = Zn²⁺.



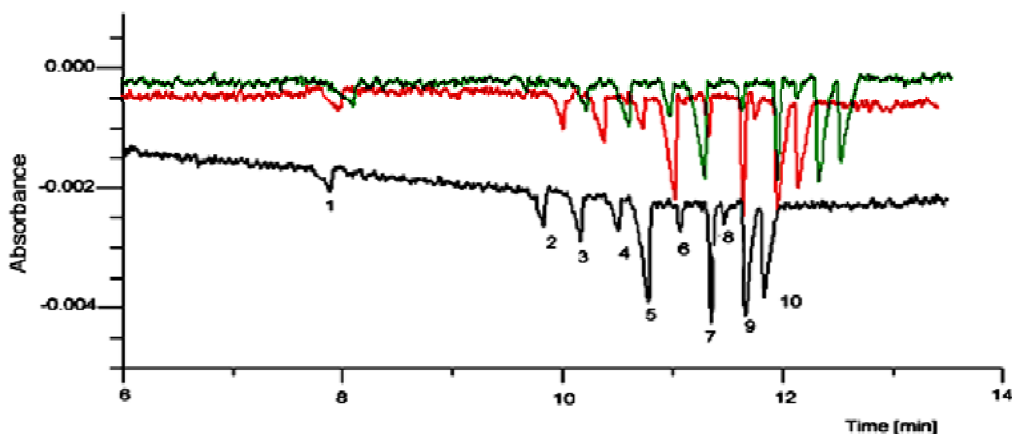
123

124

125

126

Fig.1b. The reproducibility (within runs) of metal ions over three runs using the same experimental conditions as in Fig. 1a. Peaks according to sequence: 1 = K⁺, 2 = Ca²⁺, 3 = Na⁺, 4 = Mg²⁺, 5 = Mn²⁺, 6 = Fe²⁺, 7 = Cd²⁺, 8 = Pb²⁺, 9 = Ni²⁺,



128
129
130
131
132
133

Fig.1c. The reproducibility of metal ions over three runs (between runs) using the same experimental conditions as in Fig. 1a. Peaks according to sequence: 1 = K⁺, 2 = Ca²⁺, 3 = Na⁺, 4 = Mg²⁺, 5 = Mn²⁺, 6 = Fe²⁺, 7 = Cd²⁺, 8 = Pb²⁺, 9 = Ni²⁺, 10 = Zn²⁺.

134
135
136
137
138
139
140
141
142

Higher reproducibility was obtained over three runs (within runs) as shown in Figure 1b and the reproducibility decreases over three runs (between runs), in this plot a drift to some degree in migration time (especially with that of Ni²⁺ and Zn²⁺) was observed in Figure 1c. This may be due to capillary buffer temperature change, buffer evaporation and low stability of voltage over time that was also seen with other runs. Capillary electrophoresis suffers from instability and irreproducibility of migration times and peak areas with time [5].

143
144
145

3.2. The analysis of synthetic and environmental samples

146

3.2.1 Analysis of synthetic samples

147
148
149
150
151

α -Hydroxyisobutyric acid-4-amino pyridine background electrolyte was chosen for the analysis of real samples since all 10 metals could be analysed. α -Hydroxyisobutyric acid is a widely used complexing agent since it complexes with a large number of metal ions [6] and contains suitable binding groups (carboxyl, hydroxyl) [7].

152
153
154
155
156
157
158
159
160
161

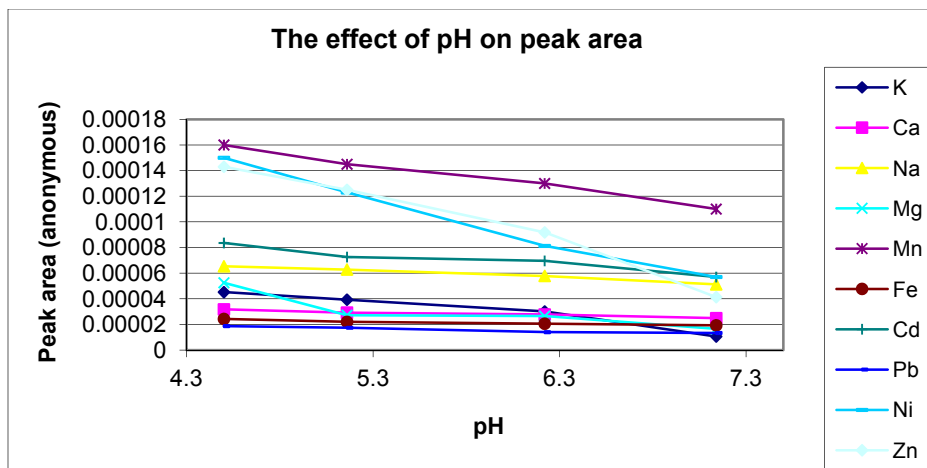
A high concentration of α -hydroxyisobutyric acid was used to decrease the electroosmosis flow (EOF) [8] and enhance the resolution. An increase in buffer conductivity and running current resulted in a significant increase in the baseline noise and markedly decreased the analyte peak response [9]. Optimum injection time was used to reduce overlap resulting from electro migration dispersion that causes a broad peak. The more the concentration of the sample component, the more pronounced is this dispersion and therefore the broader the peak [10]. The pH, the injection time and the separation voltage were the main factors affecting the separation of metal ions [11]. The effect of pH, applied voltage and injection on peak area and migration time has been studied.

162

3.2.2 Effect of pH of the background electrolyte

163
164
165
166
167
168
169
170
171

Buffer pH has much influence on the separation selectivity of metal and controls the improvement of resolution of complexes [12, 13]. The electroosmosis flow (EOF) decreases with a decrease in pH [14, 15] owing to a reduced dissociation of surface silanol groups. A decrease in the pH of BGE results in an increase in the difference of the migration times between two neighbouring cations. Changing the pH affects the selectivity and thus the peak area. A pH range between 3 - 6.5 has been studied. Figure 2 shows a plot of peak area as a function of pH.



172
173
174
175
176

Fig. 2. The effect of pH of the background electrolyte on peak area. Experimental conditions are the same as in Fig.1a.

177
178
179
180
181
182
183

A decrease in pH results in an increase in peak area. The increased peak responses are caused by a decreased migration velocity of the sample zone through the detector because peak area is inversely related to the migration velocity [16, 17, 18]. At pH 4.5 the largest peak area response, and consequently the highest sensitivity, were obtained for the cations. At pH below 4.5 a high noise and distortion in background was observed. Likewise, cations like, Mg^{2+} , Pb^{2+} and Zn^{2+} were not seen at pH lower than 4.5. This is because of the distortion of buffer solution and the complexes formed are not stable.

3.3.3 Effect of applied voltage

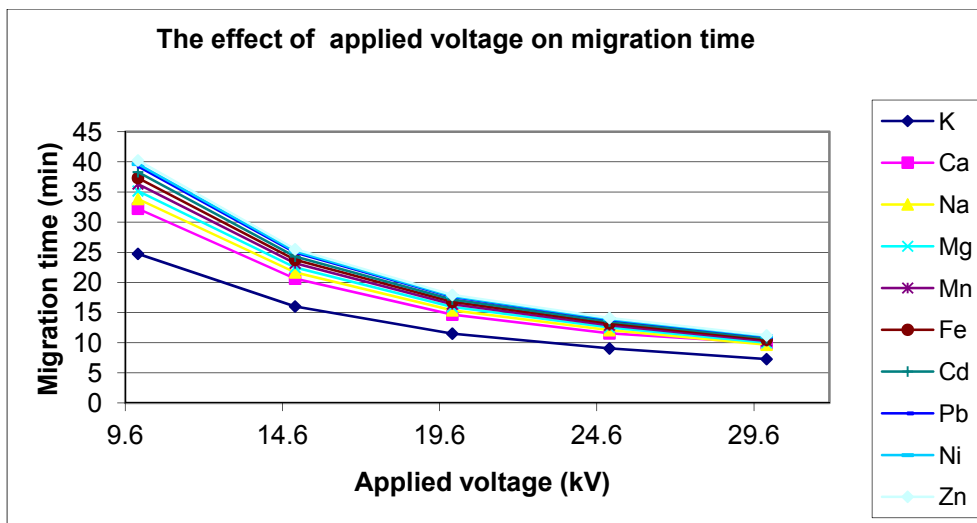
184
185
186
187
188
189

The increase in the applied voltage increases in the velocity of the ion and consequently its migration time. The relation between velocity of the ion (V), migration time (μ) and the applied voltage (E) [19] is given by:

$$V = \mu E$$

190
191
192
193

The plot of the migration time as a function of applied voltage is given in Figure 3.



194
195
196
197
198

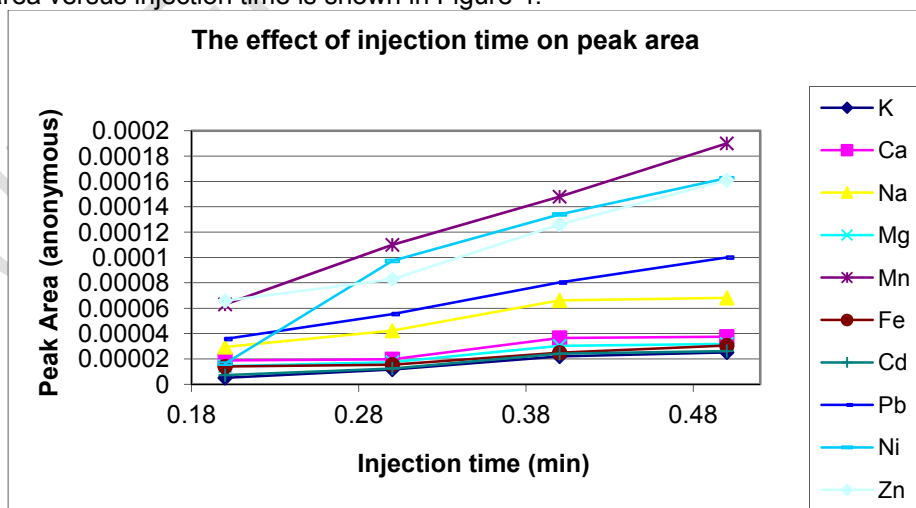
Fig. 3. The effect of applied voltage on migration time. Experimental conditions are the same as in Fig.1a.

199 A change in the applied voltage has direct effect on the migration time. The migration time
200 between the neighbouring cations changes when the applied voltage changes from 10 to 30
201 kV. From the above considerations, a positive voltage of 25 kV was selected for further
202 experiments.

203
204
205

3.3.4 Injection time

206 The signals obtained were, in general, proportional to the injection time for metals
207 investigated. However, peak broadening was found to occur at long injection time, leading to
208 poor separation [20, 21]. The effects of varying injection time to 0.2, 0.3, 0.4 and 0.5 min was
209 studied. High injection time was used since the sensitivity of the instrument is low. At higher
210 injection time the peak area was increased. Therefore, in this study, 0.3 min for metal
211 separation and 0.2 min for the calibration curve was used to reduce overlapping. The plot of
212 peak area versus injection time is shown in Figure 4.



213
214
215

Fig.4. The effect of injection time on peak area. Experimental conditions are the same

216
217
218
219
220
221
222
223
224
225
226
227

as in Fig.1a.

3.3.5 Validation of the method

3.3.5.1 Limit of detection (LOD)

Table 2 shows with hydrodynamic injection for 24 s, at pH 4.5, with respect to each metal ion the following LOD was found. Lower limits of detection was obtained by injecting greater volumes, but at the expense of peak efficiency [22]. A higher limit of detection LOD was obtained for Ca^{2+} .

Table 2. The limit of detection of metal ions (ppm).

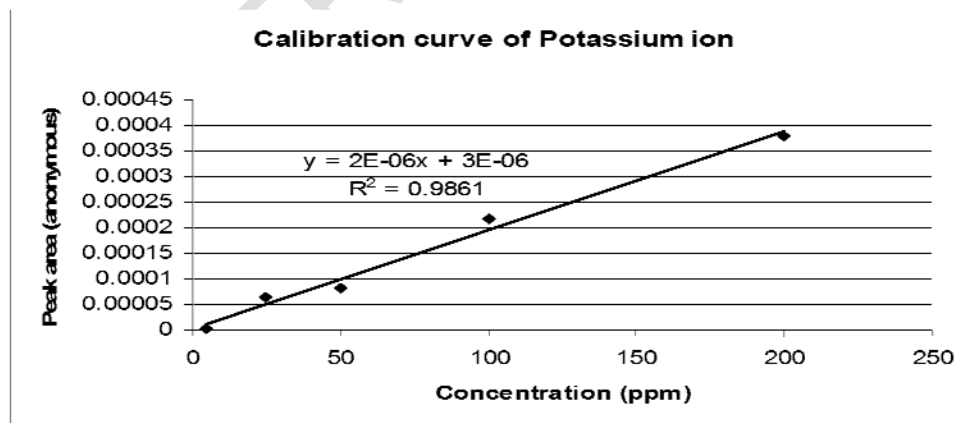
Cation	LOD	Cation	LOD
K^+	3.0	Fe^{2+}	3.0
Na^+	2.5	Cd^{2+}	1.0
Ca^{2+}	0.5	Pb^{2+}	3.0
Mg^{2+}	2.5	Ni^{2+}	1.0
Mn^{2+}	1.0	Zn^{2+}	1.0

228
229
230
231
232
233
234
235
236
237
238
239
240
241
242
243

The limit of detection of each metal ion was determined by preparing standard solutions of each metal ion to the lowest concentration that can be obtained.

3.3.5.2 Linearity of the calibration line

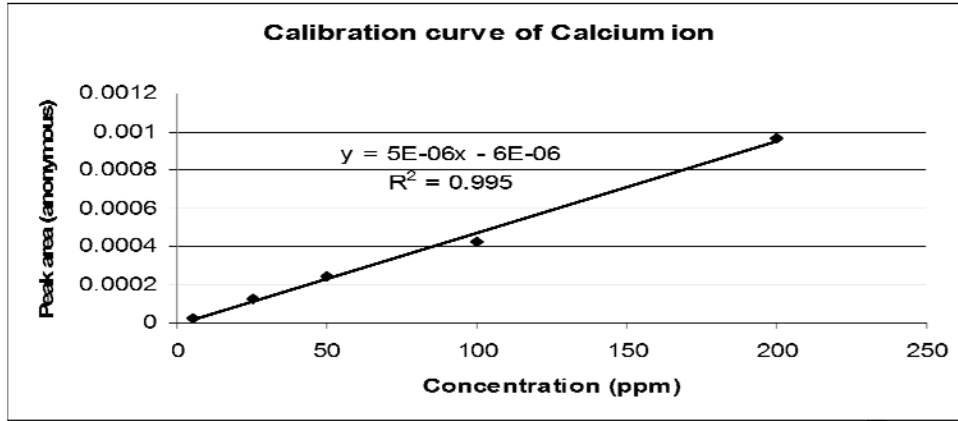
Standard solutions containing 5, 25, 50, 100, 200 ppm of each mixtures of metal was prepared under the optimised conditions to test the linearity of the response for the metals under the conditions of indirect detection. Five injections were performed at each concentration level. Analytical calibration lines were calculated based on the measurement of the peak areas. Regression values greater than 0.9861 were obtained. The regression value for K^+ was low due to its small peak. The calibration curve for base metal ions is given in Figure 5.



244
245

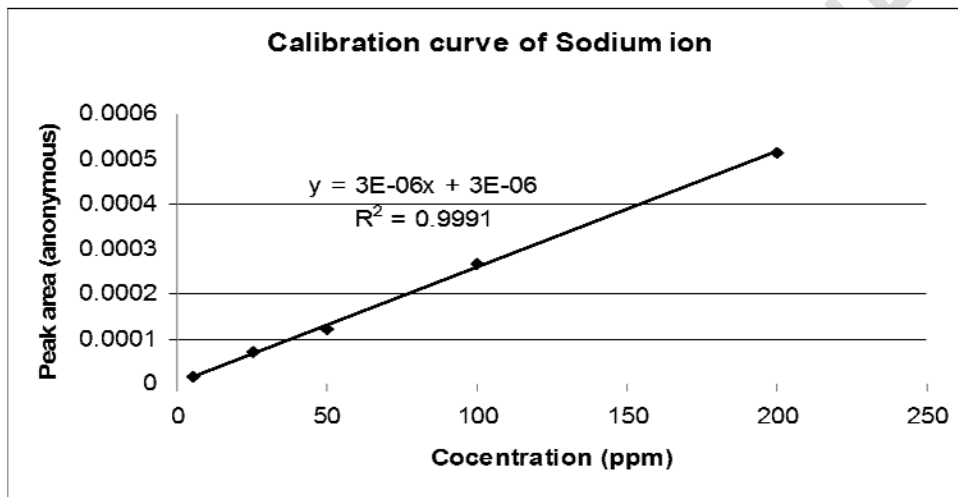
(a)

246
247



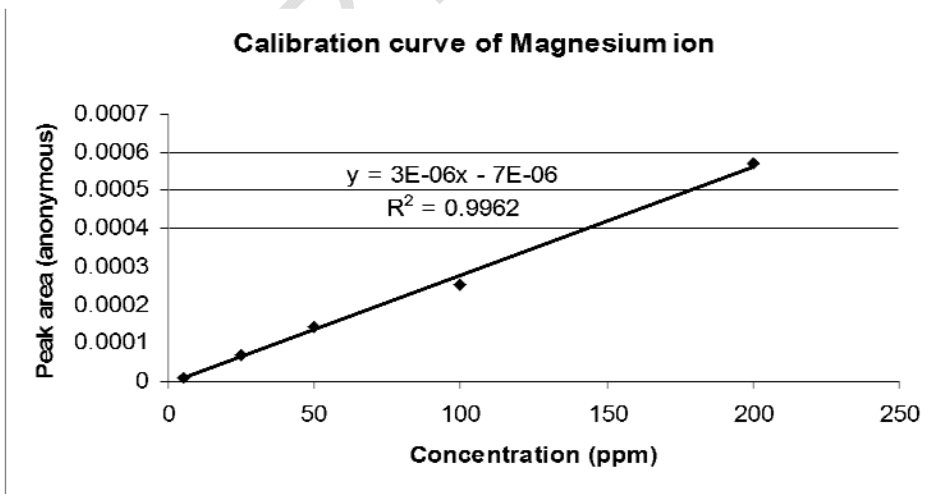
(b)

248
249



(c)

250
251
252
253
254



(d)

Fig. 5. Calibration curve of (a) K^+ , (b) Ca^{2+} , (c) Na^+ , (d) Mg^{2+}

255

256

4. CONCLUSION

257

258

Different methods have been developed for the separation, analysis, and validation of metal ions in aqueous samples using capillary electrophoresis. The α -hydroxyisobutyric acid (α -HIBA)-4-aminopyridine background electrolyte (BGE) was effective since it results in for the detection of more number of metal ions. Using α -HIBA as complexing agent and 4-aminopyridine as UV-absorbing compound was the most efficient for the successful determination of all of metal ions. The potential of the method for quantitative and qualitative analysis of metal ions in complex matrix in environmental water sample is presented.

264

265

266

REFERENCES

267

268

269

1. Siren H, Vantsi S. Environmental water monitoring by capillary electrophoresis and result comparison with solvent chemistry techniques. *J. Chromatogr. A*, 2002; 957: 17-26.
2. Song L, Xu Z, Kang J, Chen J. Analysis of environmental pollutants by capillary electrophoresis with emphasis on micellar electrokinetic chromatography. *J. Chromatogr. A*, 1997; 780: 297-328.
3. Liu YM, Cheng JK. Elemental speciation analysis in capillary electrophoresis. *Electrophoresis*. 2003; 24: 1993-2012.
4. Carla Vogt. *J. Anal. Chem.* 2001; 370: 316-318.
5. Altria KD, Frake P, Gill I, Haddgett T, Rudd DR. Validated capillary electrophoresis method for the assay of a range of basic drugs. *J. Pharm. Biomed. Anal.* 1995; 13: 951-957.
6. Fung YF, Lau KM. Determination of trace metals by capillary electrophoresis. *Electrophoresis*. 2001; 24: 2192-2200.
7. Pacakova V, Coufal P, Stulik K. Capillary electrophoresis of inorganic cations. *J. Chromatogr. A*, 1999; 834: 257-275.
8. Scarcella D, Tagliaro F, Turrina S, Manetto G, Marigo M. Optimization of a simple method for the chiral separation of phenethylamines of forensic interest based on cyclodextrin complexation capillary electrophoresis and its preliminary application to the analysis of human urine and hair. *Forensic Science International*. 1997; 89: 33-46.
9. Yang Q, Jimidar M, Hamoir TP, Smeyers-Verbeke J, Massart DL. Determination of alkali and alkaline earth metals in real samples by capillary ion analysis. *J. Chromatogr. A*, 1994; 673: 275-285.
10. Foret F, Fanali S, Ossicini L, Bocek P. Indirect photometric detection in capillary zone electrophoresis. *J. Chromatogr. A*, 1989; 470: 299-308.
11. Xiong X, Li SYF. Selection and optimization of background electrolytes for simultaneous detection of small cations and organic acids by capillary electrophoresis with indirect photometry. *J. Chromatogr. A*, 1998; 822: 125-136.
12. Liu BF, Liu LB, Cheng JK. Analysis of inorganic cations as their complexes by capillary electrophoresis. *J. Chromatogr. A*, 1999; 834: 277-308.
13. Timerbaev AR and Semenova OP. Theoretical estimation of capillary zone electrophoresis behaviour of metal complexes using multivariate regression analysis. *J. Chromatogr. A*, 1995; 690: 141-148.
14. Weston A, Brown PR, Hackenberg AL, Jandik P, Jones WR. Effect of electrolyte composition on the separation of inorganic metal cations by capillary ion electrophoresis. *J. Chromatogr. A*, 1992; 602: 249-256.
15. Chen HW, Fang ZL. Combination of flow injection with capillary electrophoresis.: Part 5. Automated preconcentration and determination of pseudoephedrine in human plasma. *Analytica Chimica Acta*. 1999; 394: 13-22.
16. Fung YS, Lau KM. Development and validation of analytical methodology using capillary electrophoresis for separation and determination of anions in rainwater. *Talanta*. 1998;

307

- 308 45: 641-646.
- 309 17. Altria DK. LC.GC. 1993; 6: 164-171.
- 310 18. Yau WP, Chan E. Chiral CE separation of warfarin in albumin containing samples.
- 311 J. Pharm. Biomed. Anal. 2002; 28: 107-123.
- 312 19. Sunada WM, Blanch HW. Polymeric separation media for capillary electrophoresis
- 313 of nucleic acids. Electrophoresis. 1997; 18: 2243-2254.
- 314 20. Kennedy RT. Bioanalytical applications of fast capillary electrophoresis. Analytical
- 315 Chimica Acta. 1999; 400: 163-180.
- 316 21. Fung YS, Tung HS. Capillary electrophoresis for trace metal ion analysis in
- 317 environmental studies. Electrophoresis. 1999; 20: 1832-1841.
- 318 22. Padarauskas A, Schwedt G. Capillary electrophoresis in metal analysis: Investigations
- 319 of multi-elemental separation of metal chelates with aminopolycarboxylic acids.
- 320 J. Chromatogr. A, 1997; 773: 351-360.

UNDER PEER REVIEW