

# **Genotype-by-environment interaction and stability analysis in grain yield of improved tef (*Eragrostis tef*) varieties evaluated in Ethiopia**

---

## **ABSTRACT**

**Aims:** To assess the magnitude of genotype by environment interaction; possible existence of different mega-environments; and discriminating ability and representativeness of the testing environments.

**Study design:** Randomized complete Block Design with three replications.

**Place and Duration of Study:** The study was conducted at Debre Zeit, Holetta and Alem Tena for two years (2015 and 2016) and at Adet, Axum and Bako for one year (2015)

**Methodology:** Thirty-five improved tef varieties were evaluated at nine environments. The G × E interaction were quantified using additive main effects and multiplicative interaction (AMMI) and the genotype and genotype by environment (GGE) biplot models.

**Results:** Combined analysis of variance revealed highly significant ( $P = 0.01$ ) variations due to genotype, environment and genotype by environment interaction effects. AMMI analysis revealed 4.3%, 79.7% and 16% variation in grain yield due to genotypes, environments and G × E effects, respectively.  $G_6$  gave the highest mean grain yield (3.33 t/ha) over environments whereas  $G_{29}$  gave the lowest mean yield (2.49 t/ha). The GGE biplot grouped the nine testing environments and the 35 genotypes into four mega environments and seven genotypic groups. The four mega environments include: G-I ( $E_1$ ,  $E_4$  and  $E_6$ ); G-II ( $E_2$ ,  $E_3$ ,  $E_7$  and  $E_8$ ); G-III ( $E_9$ ), and G-IV ( $E_5$ ).  $E_5$ ,  $E_6$ ,  $E_7$  and  $E_8$  which had the longest vector were the most discriminating of all environments while,  $E_1$  and  $E_4$  which had the smallest angle with the average environmental axis were the most representative of all environments. Regarding genotypes,  $G_6$ ,  $G_{25}$ ,  $G_{34}$  and  $G_{16}$  were identified as the best yielding and relatively stable genotypes to increase tef productivity.

**Conclusion:** AMMI and GGE were found to be efficient in grouping the tef growing environments and genotypes.

11  
12  
13  
14  
15  
16  
17  
18  
19  
20  
21  
22  
23  
24

*Keywords:* AMMI, Biplot, GGE, Stability, Tef

## **1. INTRODUCTION**

Tef is the most important staple cereal crop in Ethiopia that adapts to extreme environmental conditions and present in diverse socio-economic conditions [1]. Crop performance is a function of genotype, environment, and genotype by environment interactions (GEI). The increase in crop production and productivity is, therefore, attained with advanced understanding of the crop management and growing environments [2,3,4]. The understanding of G × E interaction enables us to effectively allocate resources and to characterize genotypic responses to diverse crop productivity levels [5]. Thus, it enables to eliminate unnecessary spatial and temporal replication of yield trials as well as to establish

25 additional testing environment when the existing ones are under-represented [4]. In general,  
 26 such information enables breeders to determine optimum breeding strategy to make  
 27 informed choices of the locations and input systems to be used in the breeding efforts [6]  
 28 and to develop and release crop varieties suitable for various agro-ecologies. As there are  
 29 very limited studies on G x E in tef crop, the importance of conducting more studies across  
 30 major tef growing environments have been suggested [5,8]. By so doing, breeders will be  
 31 able to identify adaptable, stable and high yielding genotypes. Additive main effects and  
 32 multiplicative interaction (AMMI) and the genotype and genotype by environment (GGE) are  
 33 some of the most widely used stability models to estimate the magnitude of GXE interactions  
 34 [9,10]. Both analyses enable to delineate and explain mega-environments, to identify high  
 35 yielding and better adapted genotypes [9]. GGE biplot, especially, is useful, to graphically  
 36 represent the GE interaction, and to rank the studied genotypes and environments [11]. The  
 37 objectives of this study, therefore, were: (i) to assess the magnitude of GE interaction and  
 38 stability; (ii) to examine the possible existence of different mega-environments; and (ii) to  
 39 determine the discriminating ability and representativeness of the environments.  
 40

41

## 42 2. MATERIALS AND METHODS

43

44 Thirty-five improved tef varieties released by the National Agricultural Research Systems in  
 45 Ethiopia from the inception of the tef breeding program to the year 2014 were used. These  
 46 varieties differ in their seed color, suitable environment and other parameters. Detailed  
 47 descriptions of the varieties are shown in Table 1.

48

**Table 1. Description of the 35 tef genotypes used in this study**

Code	Genotype		Year of release	Seed color	Breeding method	Suitable environment
	Common name	Variety name				
G <sub>1</sub>	<i>Enatit</i>	DZ-01-354	1970	Pale white	Selection	High potential
G <sub>2</sub>	<i>Asgori</i>	DZ-01-99	1970	Brown	Selection	High potential
G <sub>3</sub>	<i>Magna</i>	DZ-01-196	1978	Very white	Selection	High potential
G <sub>4</sub>	<i>Wolenkomi</i>	DZ-01-787	1978	Pale white	Selection	High potential
G <sub>5</sub>	<i>Menagesha</i>	DZ-Cr-44	1982	White	Hybridization	High potential
G <sub>6</sub>	<i>Melko</i>	DZ-Cr-82	1982	White	Hybridization	High potential
G <sub>7</sub>	<i>Tseday</i>	DZ-Cr-37	1984	White	Hybridization	Low moisture
G <sub>8</sub>	<i>Gibe</i>	DZ-Cr-255	1993	White	Hybridization	High potential
G <sub>9</sub>	<i>Ziquala</i>	DZ-Cr-358	1995	White	Hybridization	High potential
G <sub>10</sub>	<i>Dukem</i>	DZ-01-974	1995	White	Selection	High potential
G <sub>11</sub>	<i>Holeta Key</i>	DZ-01-2053	1999	Brown	Selection	High potential
G <sub>12</sub>	<i>Ambo-Toke</i>	DZ-01-1278	2000	White	Selection	High potential
G <sub>13</sub>	<i>Gerado</i>	DZ-01-1281	2002	White	Selection	Low moisture
G <sub>14</sub>	<i>Koye</i>	DZ-01-1285	2002	White	Selection	High potential
G <sub>15</sub>	<i>Key Tena</i>	DZ-01-1681	2002	Brown	Selection	Low moisture
G <sub>16</sub>	<i>Gola</i>	DZ-01-2054	2003	Pale white	Selection	High potential
G <sub>17</sub>	<i>Ajora</i>	PGRC/E 205396	2004	Pale white	Selection	High potential
G <sub>18</sub>	<i>Genet</i>	DZ-01-146	2005	Pale white	Selection	High potential
G <sub>19</sub>	<i>Zobel</i>	DZ-01-1821	2005	Pale white	Selection	High potential
G <sub>20</sub>	<i>Dima</i>	DZ-01-2423	2005	Brown	Selection	High potential
G <sub>21</sub>	<i>Yilmana</i>	DZ-01-1868	2005	Pale white	Selection	High potential
G <sub>22</sub>	<i>Dega Tef</i>	DZ-01-2675	2005	Pale white	Selection	Waterlogged soil
G <sub>23</sub>	<i>imbichu</i>	DZ-01-899	2005	Pale white	Selection	Waterlogged soil
G <sub>24</sub>	<i>Amarach</i>	Ho -Cr-136	2006	Pale white	Hybridization	Low moisture

G <sub>25</sub>	<i>Quncho</i>	DZ-Cr-387 (RIL355)	2006	Very white	Hybridization	High potential
G <sub>26</sub>	<i>Guduru</i>	DZ-01-1880	2006	White	Selection	High potential
G <sub>27</sub>	<i>Gemechis</i>	DZ-Cr-387 (RIL127)	2007	Very white	Hybridization	Low moisture
G <sub>28</sub>	<i>Mechare</i>	Acc. 205953	2007	Pale white	Selection	High potential
G <sub>29</sub>	<i>Kena</i>	23-Tafi Adi-72	2008	White	Selection	High potential
G <sub>30</sub>	<i>Etsub</i>	DZ-01-3186	2008	White	Selection	High potential
G <sub>31</sub>	<i>Laketch</i>	DZ-Cr-387 (RIL 273)	2009	Very white	Hybridization	Low moisture
G <sub>32</sub>	<i>Simada</i>	DZ- Cr-385 (RIL295)	2009	White	Hybridization	Low moisture
G <sub>33</sub>	<i>Boset</i>	DZ-Cr-409 (RIL 50d)	2011	Very white	Hybridization	Low moisture
G <sub>34</sub>	<i>Kora</i>	DZ-Cr-438 (RIL133B)	2014	Very white	Hybridization	High potential
G <sub>35</sub>	<i>Werekiyu</i>	Acc. 214746A	2014	White	Selection	Low moisture

49

50 Nine environments from six major tef growing areas in Ethiopia, namely Adet, Alem Tena,  
51 Axum, Debre Zeit, Holetta and Shambu were used in the study. Among these six locations,  
52 Alem Tena, Debre Zeit and Holetta were each represented by two locations. These  
53 experimental sites are situated at elevations ranging from 1580 m a. s. l. at Alem Tena to  
54 2503 at Shambu. Similarly, the annual rainfall of these sites ranges from 500 mm at Alem  
55 Tena to 1100 mm at Holetta. Detailed descriptions of the nine testing locations regarding  
56 their geographical coordinates, climate and soil types are shown in Table 2. Randomized  
57 complete block design (RCBD) with three replications was used at each location. Each plot  
58 had five rows of one-meter long with the spacing of 0.2m between rows and 1m between  
59 plots. All recommended agronomic and cultural practices for tef were applied. Data on grain  
60 yield (GY) was recorded on plot basis which was later extrapolated to hectare basis. The  
61 grain yield data were evaluated for the normality and homogeneity of variance. This was  
62 followed by combined analysis of variance (ANOVA) as suggested by Gomez and Gomez  
63 [12] using the generalized linear model (GLM) procedure in SAS v9 [13]. Mean separation  
64 and significance test was performed using Duncan's multiple range test at 5% probability  
65 level. AMMI analysis was performed following the AMMI model according to [14] using  
66 GenStat software 15 edition [15]. The AMMI stability values (ASV) were calculated as  
67 suggested by [16]. GGE biplot analysis, on the other hand, was performed using the  
68 genotype by environment analysis in R (GEA-R) software v4.0 [17]. Thus, the first two  
69 principal components (PC1 and PC2) were used to graphically represent the GEI, to identify  
70 the rank of studied genotypes and environments [11].

71 **Table 2. Description of the nine study locations \***

Locations		Altitude	Latitude	Longitude	Annual rainfall (mm)	Temperature		Soil type
Code	Name					Min °C	Max °C	
E <sub>1</sub>	Adet	2240	11 <sup>0</sup> 17' N	37 <sup>0</sup> 43'E	921.3	7.3	31.3	Nitosol
E <sub>2</sub>	Alem Tena-1	1580	8 <sup>0</sup> 20' N	38 <sup>0</sup> 57'E'	500	8	29.8	Light sandy
E <sub>3</sub>	Alem Tena-2	1580	8 <sup>0</sup> 20' N	38 <sup>0</sup> 57' E	500	8	29.8	Light sandy
E <sub>4</sub>	Axum	2100	14 <sup>0</sup> 6'N	38 <sup>0</sup> 48'E	700	12.2	26.8	Vertisol
E <sub>5</sub>	Debre Zeit-1	1900	8 <sup>0</sup> 44' N	38 <sup>0</sup> 58' E	851	8.9	28.3	PellicVertisol
E <sub>6</sub>	Debre Zeit-2	1900	8 <sup>0</sup> 44' N	38 <sup>0</sup> 58' E	851	8.9	28.3	PellicVertisol
E <sub>7</sub>	Holetta-1	2400	9 <sup>0</sup> 44'N	38 <sup>0</sup> 30' E	1100	6	22	Nitosol
E <sub>8</sub>	Holetta-2	2400	9 <sup>0</sup> 44' N	38 <sup>0</sup> 30' E	1100	6	22	Nitosol
E <sub>9</sub>	Shambu	2503	9 <sup>0</sup> 57'N	37 <sup>0</sup> 10' E				Nitosol

72 \*Climatic and edaphic information was obtained from their respective research and sub centers.

73

## 74 3. RESULTS AND DISCUSSION

75

### 76 3.1. Analysis of Variance

77 Combined analysis of variance for grain yield of the 35 improved tef varieties across nine  
78 testing environments revealed highly significant ( $P < 0.01$ ) variations due to genotype,  
79 environment and genotype by environment interactions (Table 3). The significant variability  
80 among the tef varieties in the present study is in line with the previous reports in tef [7]. The  
81 significant GXE interaction in the present study indicates unstable performance of the tef  
82 varieties across the testing environments (Fig. 1). While, Debre Zeit and Holetta were high  
83 yielding environments Alem Tena, Adet, Axum and Shambu were low yielding environments.  
84 Although not at all locations, variety G6 (Melko) performed better than others at least at  
85 three low yielding environments (Adet, Alem Tena and Axum) and one high yielding  
86 environment (Debre Zeit). Apart from this, tef varieties with higher productivity at specific  
87 testing sites were at Holetta (Gerado, Key Tena and Gimbichu), at Debre Zeit (Melko, Gola,  
88 Ajora, Quncho and Gemechis), at Shambu (Guduru and Gibe), at Axum (Kora, Dukem,  
89 Quncho, Laketch and Melko), and at Alem Tena (Melko, Amarach and Quncho).  
90 Interestingly, the three top yielding varieties at Adet (Quncho, Laketch and Kora) have very  
91 close kinship. While Quncho and Laketch are sister lines obtained from the same crossing  
92 group, Kora was obtained from the cross where Quncho was used as one parental line. The  
93 huge variability in the grain yield among the 35 tef varieties at the nine environments might  
94 be due to wide variability in climatic and soil conditions. Earlier works also reported similar  
95 inconsistencies in yield performance which complicated the selection and recommendation  
96 of stable genotype across environments [5,7,18]. Results should be clearly described in a  
97 concise manner. Results for different parameters should be described under subheadings or  
98 in separate paragraph. Table or figure numbers should be mentioned in parentheses for  
99 better understanding.

100

101 **Table 3. Analysis of variance for grain yield (t/ha) of tef varieties evaluated at nine**  
102 **environments**

Source of variation	Degree of freedom	Mean squares
Genotype (G)	34	1.35***
Environment (E)	8	104.93***
Replication (E)	18	0.011ns
G x E	272	0.62***
Error	612	0.014
Total	944	-

103

### 104 3.2. AMMI analysis of variance for grain yield

105 AMMI analysis revealed highly significant ( $P = 0.01$ ) differences for grain yield ( $t\ ha^{-1}$ ) of 35  
106 tef varieties due to genotypes, environments and their interaction. This is in line with the  
107 previous works [5,7,19]. The AMMI analysis partitioned the G x E variance into principal  
108 component (PC) axes where the results are presented in Table 4. Based on this, the first  
109 and second interaction principal components explained 72.5% (IPCA1=53.04% and  
110 IPCA2=19.49%) of the total variation. Previously, however, PC1 value of 52.1% [5], 66.1%  
111 [20], 93.1% [21] were reported. In the present study, the variation explained by the  
112 environment which was about four times higher than that of genotype and GE interaction is  
113 in line with the earlier findings [2,22]. The first two IPCAs that contributed for over 70% of the

114 G x E interaction were used to create a biplot as being employed previously in faba beans  
115 [2], finger millet [20] and tef 5,7].

116

117 **Table 4. AMMI analysis of variance for grain yield (t ha<sup>-1</sup>) of 35 tef genotypes grown at**  
118 **nine environments.**

Source of variation	DF	SS	MS	F value	Explained % of SS
Environment	8	839.5	104.9	9292.9***	79.66
Genotype	34	45.90	1.35	97.1***	4.34
GEI	272	168.4	0.62	44.5***	15.98
PC1	41	89.3	2.18	156.6***	53.04
PC2	39	32.7	0.84	60.2***	19.41
Residuals	192	46.4	0.24	17.4	*

119 GEI= Genotype by Environment interaction; DF= Degrees of freedom; SS= Sums of square; MS=  
120 Means square.

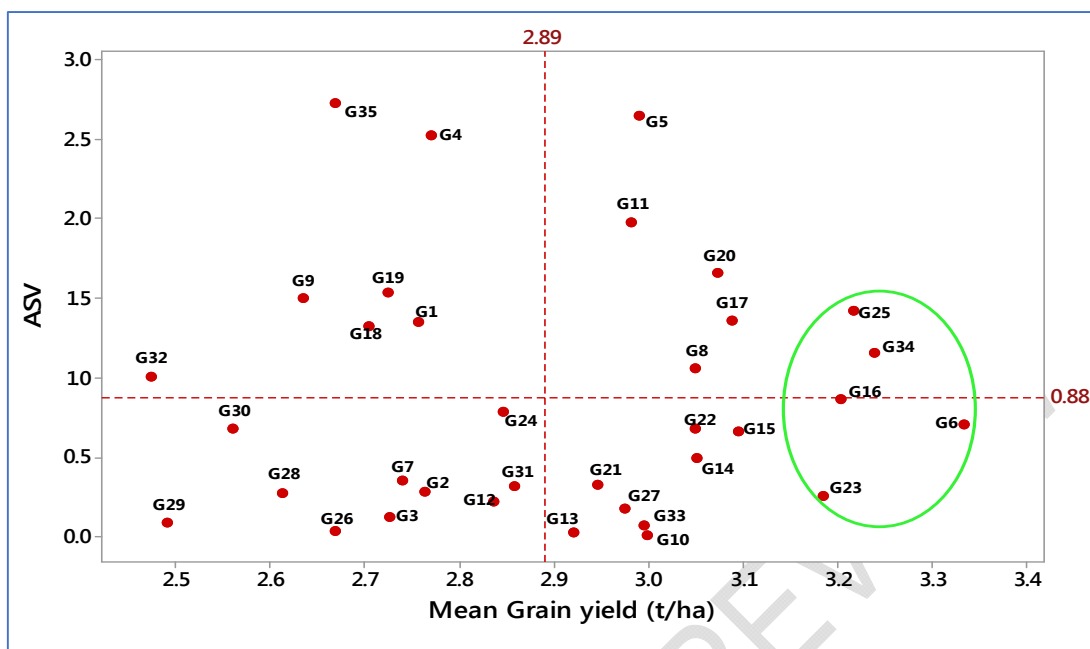
121

122

### 123 3.3. Mean grain yield and AMMI stability value

124 The mean yield performance of 35 studied varieties at nine environments is shown in Table  
125 5 and Fig. 1. The mean grain yield of the nine environments ranged from 1.7 t ha<sup>-1</sup> at E2  
126 (Alem Tena) to 4.29 t ha<sup>-1</sup> at E5 (Debre Zeit) with a mean of 2.89 t ha<sup>-1</sup>. The grain yield at  
127 E5 was followed by those at E7, E6 & E8 in descending order. On the other hand, among  
128 the 35 tef varieties tested across nine environments, mean grain yield ranged from 2.49 t ha<sup>-1</sup>  
129 for G29 (Kena) to 3.33 t ha<sup>-1</sup> for G6 (Melko). The five top yielding varieties were G6 (3.33 t  
130 ha<sup>-1</sup>), G34 (3.27 t ha<sup>-1</sup>), G25 (3.22 t ha<sup>-1</sup>), G16 (3.2 t ha<sup>-1</sup>) and G23 (3.18 t ha<sup>-1</sup>). The  
131 AMMI stability values (ASV), in the present study ranged from 0.01 for G10 to 2.73 for G35  
132 (Fig. 2). Thus, G10 had the lowest ASV (0.01) and moderately higher grain yield (3.0 t ha<sup>-1</sup>)  
133 whereas G6 had the highest yield (3.33 t ha<sup>-1</sup>) with relatively lower ASV (0.71) followed by  
134 G34 which had the next highest yield (3.27 t ha<sup>-1</sup>) with ASV (1.16) (Table 5). Hence, when  
135 considering higher grain yield, varieties such as G6, G34 and G25 with high grain yield and  
136 relatively more stable could be selected instead of varieties such as G10 and G20 which  
137 were more stable but with moderately low yield.

138



139  
140  
141  
142  
143  
144  
145  
146

**Figure 1. Plot showing mean grain yield ( $t\ ha^{-1}$ ) versus AMMI stability value (ASV).**The reference line on the x-axis is the average grain yield ( $2.89\ t\ ha^{-1}$ ) whereas that on the y-axis is (ASV=0.88) indicating stability of genotype).

**Table 5. Mean grain yield ( $t\ ha^{-1}$ ) of teff varieties evaluated at nine environments in Ethiopia**

Code	Environments									Mean	ASV	ICPA1	ICPA2
	E1	E2	E3	E4	E5	E6	E7	E8	E9				
G1	2.21	1.80	1.85	2.93	3.07	2.84	4.12	4.01	1.99	2.76	1.35	-0.70	-0.11
G2	2.14	1.50	1.61	2.33	3.86	3.15	4.35	3.81	2.13	2.76	0.29	0.22	-0.39
G3	2.33	1.56	1.43	2.37	4.47	3.54	3.49	3.51	1.84	2.73	0.13	0.15	0.26
G4	2.46	2.15	1.87	1.88	3.63	2.89	3.89	3.73	2.44	2.77	2.53	-0.95	-0.25
G5	2.68	1.91	1.77	2.15	4.74	3.82	3.73	3.68	2.43	2.99	2.65	-0.88	-0.73
G6	2.13	1.75	2.49	3.09	5.71	4.07	4.54	4.12	2.11	3.33	0.71	0.46	0.36
G7	2.30	1.33	1.57	1.74	4.29	3.24	4.06	3.43	2.71	2.74	0.36	-0.25	-0.43
G8	2.77	1.78	1.75	2.16	5.08	4.14	3.63	3.35	2.80	3.05	1.06	0.60	-0.25
G9	1.98	1.63	1.85	1.52	2.63	2.98	4.82	4.03	2.27	2.63	1.50	0.74	0.10
G10	2.22	1.76	1.50	3.05	4.84	3.49	4.10	4.00	2.05	3.00	0.01	0.06	-0.03
G11	2.18	1.96	1.94	2.30	4.66	3.53	4.02	3.58	2.68	2.98	1.98	0.80	0.47
G12	2.16	2.24	1.98	2.63	2.87	2.97	4.64	4.21	1.84	2.84	0.23	-0.27	-0.20
G13	2.07	1.82	1.84	2.47	3.31	3.06	5.17	4.72	1.82	2.92	0.03	-0.09	-0.10
G14	1.93	2.14	1.98	2.36	5.00	4.13	3.90	3.28	2.74	3.05	0.50	-0.41	-0.22
G15	1.92	1.79	1.83	2.68	4.39	3.44	4.95	4.32	2.52	3.10	0.67	0.36	-0.55
G16	2.59	1.76	1.86	2.12	5.60	4.31	4.44	3.88	2.27	3.20	0.87	0.31	-0.78
G17	1.88	1.94	1.84	2.47	5.54	4.24	4.00	3.29	2.61	3.09	1.36	-0.68	0.30
G18	2.17	1.60	1.39	2.31	4.20	3.26	3.41	4.03	1.99	2.70	1.33	0.69	-0.14
G19	2.63	1.36	1.53	2.22	5.03	3.76	2.63	3.22	2.15	2.73	1.54	-0.53	0.88
G20	2.30	1.75	1.69	2.50	4.49	3.50	4.34	4.38	2.72	3.07	1.66	0.76	-0.29
G21	2.49	1.82	1.74	2.32	3.82	3.38	4.57	4.19	2.19	2.95	0.33	-0.01	0.57
G22	2.59	1.55	1.46	2.51	5.06	3.98	4.66	3.75	1.90	3.05	0.68	-0.28	0.68
G23	2.54	1.80	1.66	2.36	5.36	3.95	4.56	4.71	1.71	3.18	0.26	0.31	-0.03
G24	2.19	2.15	2.03	1.83	3.37	3.01	4.35	4.07	2.63	2.85	0.79	-0.48	0.40

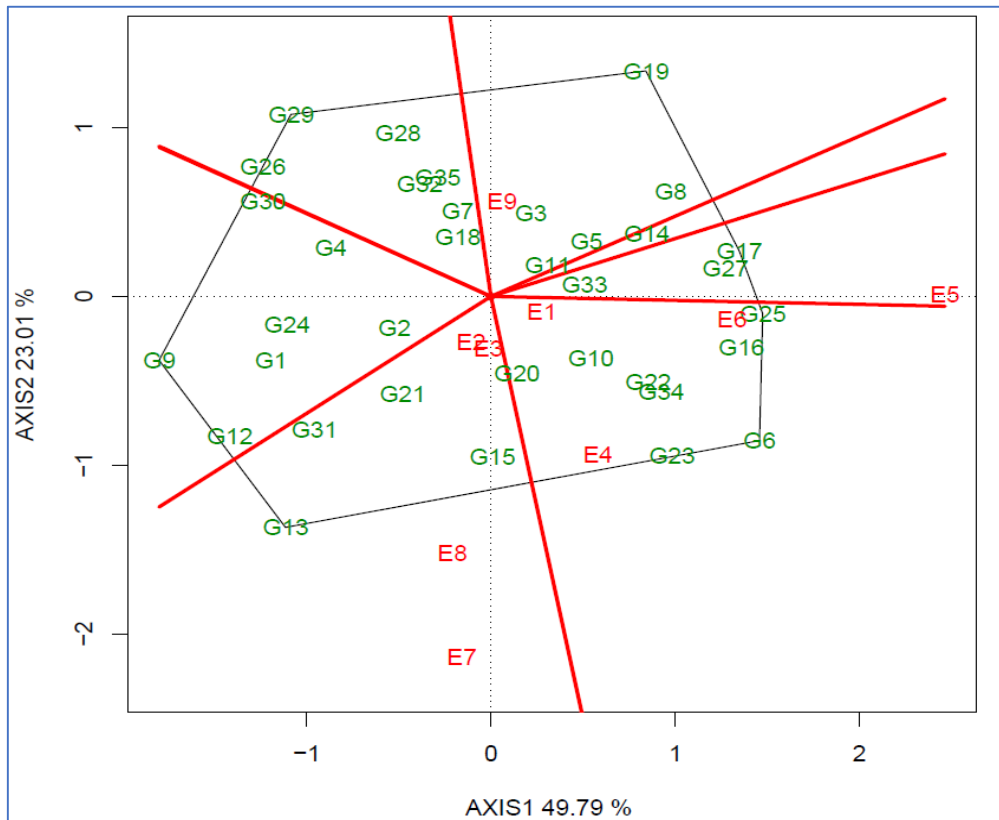
G25	2.89	2.17	1.78	3.06	5.49	4.23	3.82	3.58	1.94	3.22	1.42	-0.67	-0.44
G26	2.19	1.91	1.77	1.91	3.15	2.86	3.60	3.50	3.14	2.67	0.04	0.12	-0.06
G27	2.15	1.36	1.38	2.71	5.39	4.20	3.71	3.76	2.13	2.98	0.18	0.26	0.06
G28	1.71	1.71	1.70	2.66	3.74	3.12	3.02	3.30	2.57	2.61	0.28	0.28	-0.26
G29	2.40	1.92	1.51	1.37	3.42	2.86	3.35	3.28	2.31	2.49	0.09	0.06	0.28
G30	2.23	1.78	1.81	2.03	3.10	2.92	3.56	3.52	2.11	2.56	0.68	-0.43	0.43
G31	2.80	2.10	1.57	2.98	3.30	2.92	4.39	4.20	1.48	2.86	0.32	0.30	0.27
G32	1.60	1.28	1.44	1.38	4.19	3.25	3.84	3.41	1.88	2.47	1.01	0.51	-0.55
G33	2.53	1.60	1.65	2.92	4.74	3.45	4.07	3.43	2.27	2.96	0.08	0.05	0.28
G34	2.92	1.93	1.64	3.42	4.88	3.99	4.35	3.76	2.57	3.27	1.16	0.58	0.49
G35	2.57	1.84	1.71	2.67	3.88	3.22	3.24	3.13	1.77	2.67	2.73	-1.00	-0.03
<b>Mean</b>	<b>2.31</b>	<b>1.78</b>	<b>1.70</b>	<b>2.38</b>	<b>4.29</b>	<b>3.48</b>	<b>4.04</b>	<b>3.78</b>	<b>2.25</b>	<b>2.89</b>	<b>0.88</b>	<b>0.00</b>	<b>0.00</b>

147 **Key:** G1 to G35 name of genotypes; E1= Adet, E2=Alem Tena (2015), E3= Alem Tena (2016), E4=  
148 Axum, E5= Debre Zeit (2015), E6= Debre Zeit (2016), E7=Holetta (2015), E8= Holetta (2016), E9=  
149 Shambu. IPCA = Interaction Principal Component Axis, ASV = AMMI Stability Value.

150  
151

### 152 3.4. Analysis of GGE biplot

153 GGE biplot is visualized on the basis of results explained for the first two principal  
154 components [23]. In the present study, the first two principal components of GGE biplot  
155 explained 72.8 % (PC1=49.8 and PC2=23.0%) of the total variations (Fig. 2). In the polygon  
156 view, genotypes found furthest away from the origin are the vertex genotypes having the  
157 highest yield in their respective sector [24,25]. In the present study, these genotypes include  
158 G19, G25, G6, G13, G9 and G29 and they all have the highest yield in their respective  
159 sector. In GGE biplot graph, various lines emanating from the origin and become  
160 perpendicular to the line connecting the vertex genotypes are useful to divide the testing  
161 environments and genotypes into different sectors. Therefore, the nine testing environments  
162 were divided into four mega environments while the 35 genotypes were divided into seven  
163 genotypic groups (Fig. 3). The four mega environments consisted of Group-I (E1, E4 and  
164 E6), Group-II (E2, E3, E7 and E8), Group-III (E9), and group-IV (E5). Varieties G6 and G25  
165 were the vertex and highest yielding genotypes at three environments namely E1, E4 and  
166 E6. Similarly, G13 was the vertex and highest yielding genotype in the sector where E2, E3,  
167 E7 and E8 exist while, G19 was the highest yielding at E9. The other vertex genotypes (G9  
168 and G29), however, had no corresponding environment and hence are the poorest yielding  
169 in all the testing environments. Sector four (E5) which consisted of G17, G33 and G27 had  
170 no vertex genotype, though their mean yields were substantially higher than the grand mean  
171 and they were also among the top yielding genotypes in their neighboring environments.



173  
174  
175  
176  
177

Fig 2. Which performed where view of the GGE biplot showing the grouping of genotypes and environments into various sectors.

### 3.5. Relationship among environments and discriminative vs representativeness

178  
179  
180

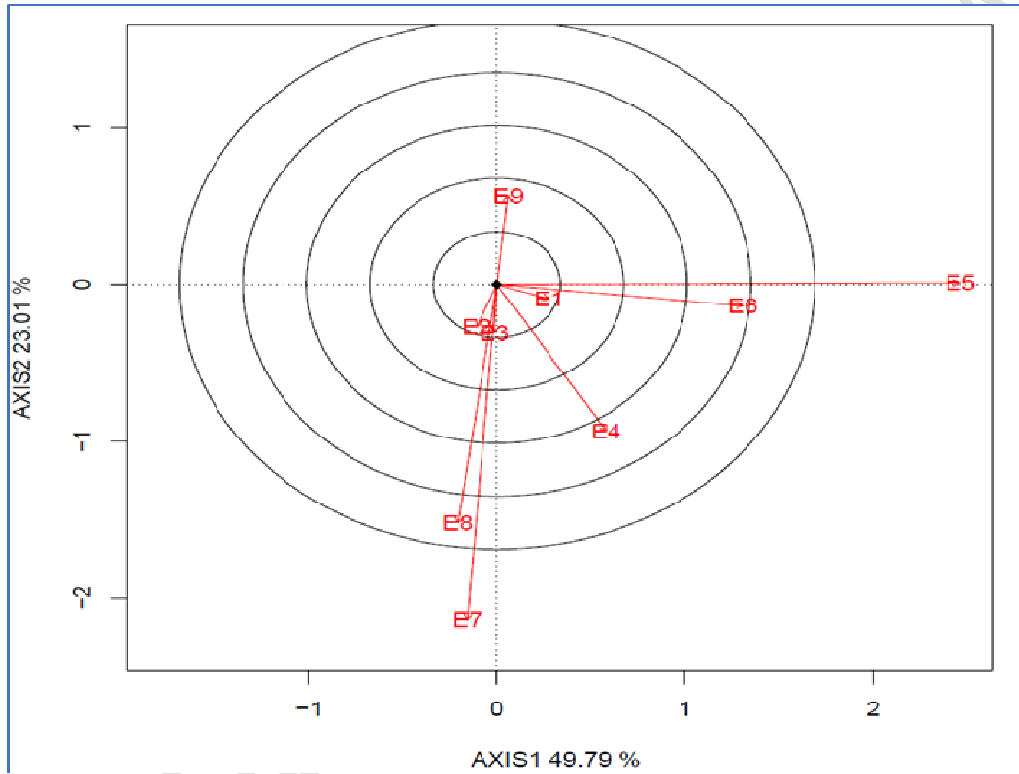
181 The angle between the vectors of two environments has a meaningful relation with the  
182 correlation coefficient between them [3,25,26] and are used to group the test environments.  
183 The relationships among the nine test environments in the present study are presented in  
184 Fig. 3a. Based on this graph, the angle between E5, E6, E1 and E4 was less than 90°  
185 indicating the existence of positive correlation between them. Similarly, E7, E8, E2 and E3  
186 had acute angle ( $<90^{\circ}$ ) indicating that these environments were positively correlated. On the  
187 other hand, the angle between E9 & E5, E6 & E7 is nearly 90° showing that these  
188 environments are not correlated. Furthermore, E9 had obtuse angle ( $>90^{\circ}$ ) with E6, E1, E4,  
189 E3, E7, E8 and E2 showing that it has negative correlation with these environments. Thus, if  
190 environments are negatively correlated, genotypes performing best in one environment  
191 would perform less in the other environment and vice versa. However, if environments are  
192 positively correlated genotypes performing best in one environment will have the same  
193 performance in the other environment too [3,25].

194

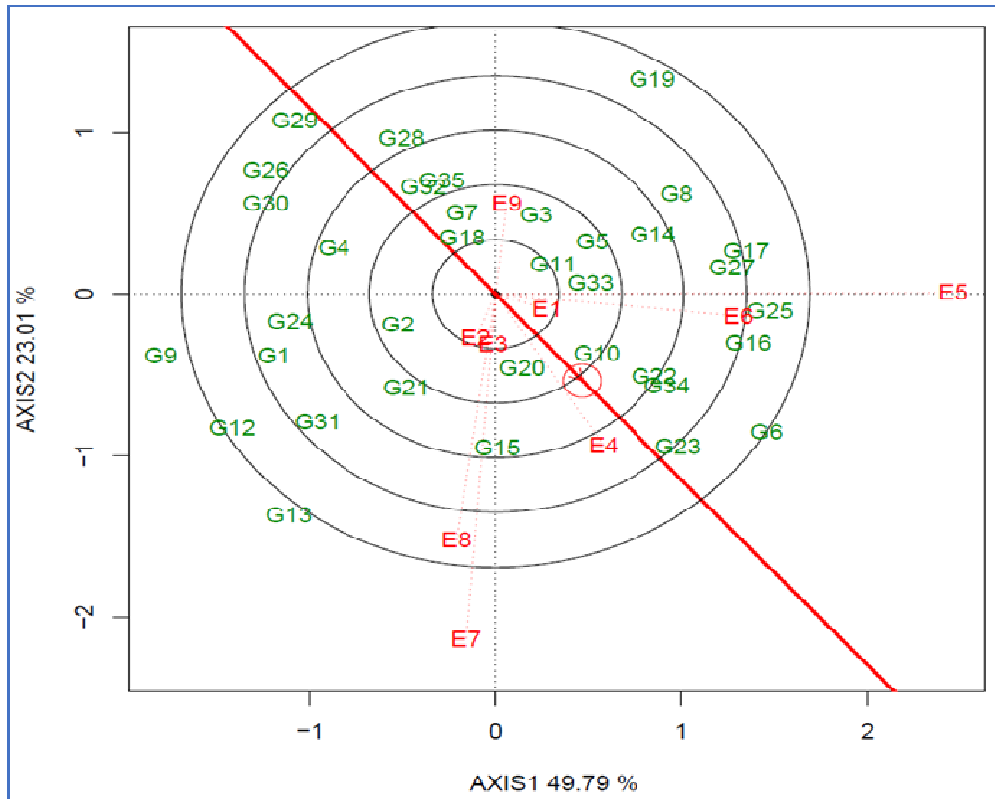
195 The GGE biplot is useful to assess how much a test environment is capable of generating  
196 unique information about the differences among genotypes as well as how representative  
197 the mega-environment is. A vector length, for instance, is the absolute distance between the  
198 marker of an environment and the plot origin [23,26,27] and it is used to measure the



199 discriminating ability of an environment. Thus, the longer the vector, the better the  
200 discriminating power of an environment. The variation in vector length among the different  
201 testing environments in the present study are presented in Fig. 3b. Based on this, E5, E7  
202 and E6 which had the longest vector were identified as the most discriminating environments  
203 whereas E1, E2 and E3 were the least discriminating of all test environments. According to  
204 [27], testing environment with smaller angle and average environmental axis is said to be  
205 more representative of the other testing environments. Hence, E4 and E1 which had the  
206 smallest angle with the average environmental axis were identified to be the most  
207 representative environments. E9, however, was the least representative of all studied  
208 environments and was the poorest for selecting cultivar adapted to the whole region (Fig.  
209 3b).  
210



211  
212 3a)  
213



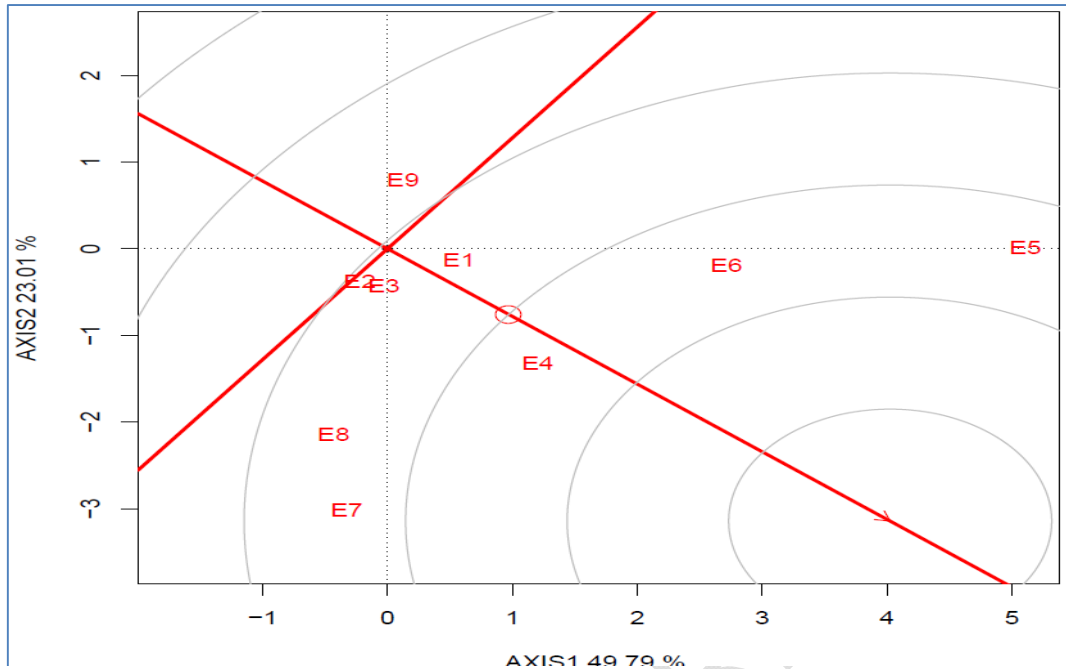
214  
 215  
 216  
 217  
 218  
 219  
 220  
 221  
 222  
 223  
 224  
 225  
 226  
 227  
 228  
 229  
 230  
 231  
 232  
 233  
 234  
 235  
 236  
 237

3b)  
**Figure 3. GGE biplot view showing the relationship among the testing environments (a) and discriminativeness vs Representativeness (b)**

### 3.6. Ranking testing environments relative to the ideal environment and genotype

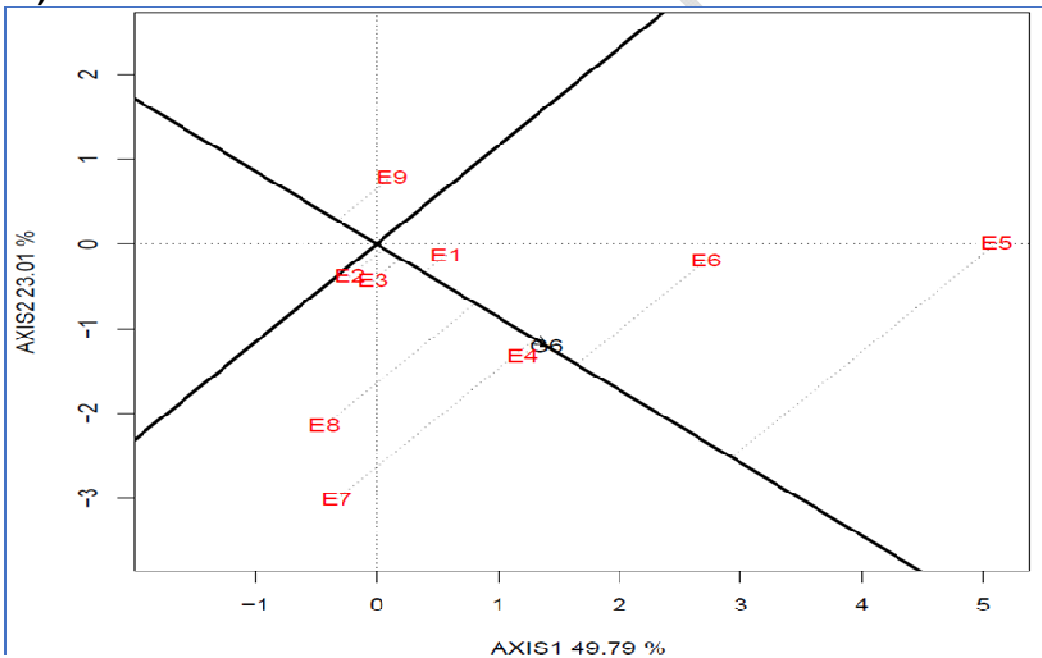
Average environmental axis (AEA) is a line passing through the origin and pointing to the positive direction with its distance equal to the longest vector. Besides, an ideal environment is a point on the AEA in the positive direction of the biplot origin and is equal to the longest vector of all environments [27]. Thus, the ranking of environments has identified E5 as the most ideal environment followed by E6 and E4 whereas, E9 followed by E2, E3 and E1 were the least ideal environments (Fig. 4a). All study environments other than E9 were found to have above average performance for genotype evaluation. Ideal environments are generally, expected to have more power of discriminating genotypes and more representative of the overall environments [23,26].

On the other hand, the length of environmental projections appeared onto a genotype axis shows the performance of the best genotype at different environments relative to the other environments. Thus, E5 followed by E7, E6 and E8 had the longest projection from the axis where G6 ranked first (Fig. 4b). Hence, all environments other than E9 were found to be best for the performance of G6.



238  
239

4a)



240  
241  
242  
243  
244  
245  
246  
247  
248  
249

b)

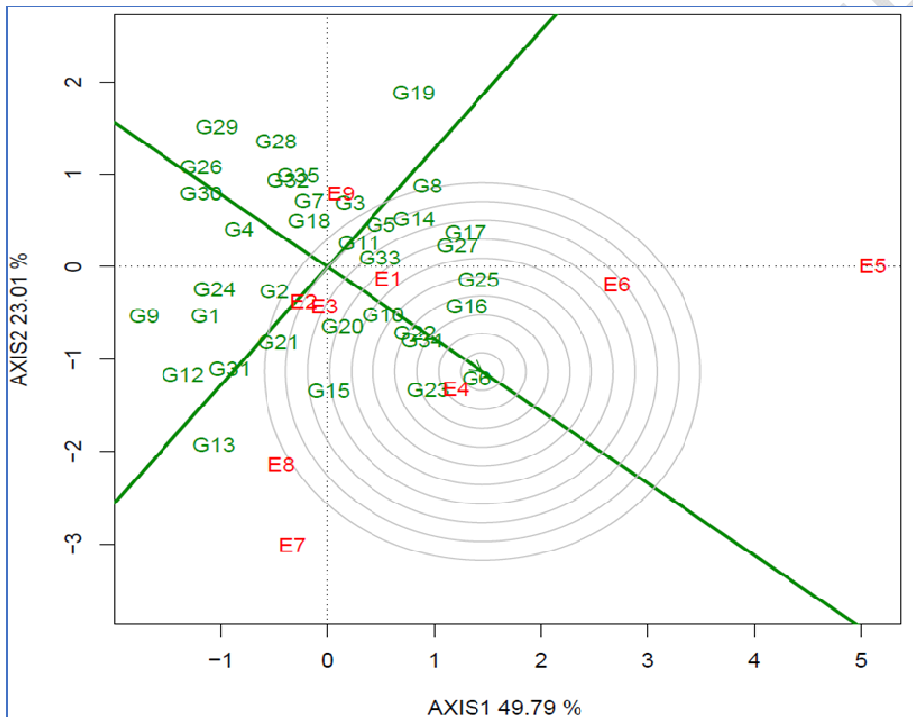
**Figure 4. GGE biplot showing ranking of test environments relative to an ideal test environment (a) and relative to the best genotypes (b)**

### **Ranking genotypes relative to the ideal genotype and environment**

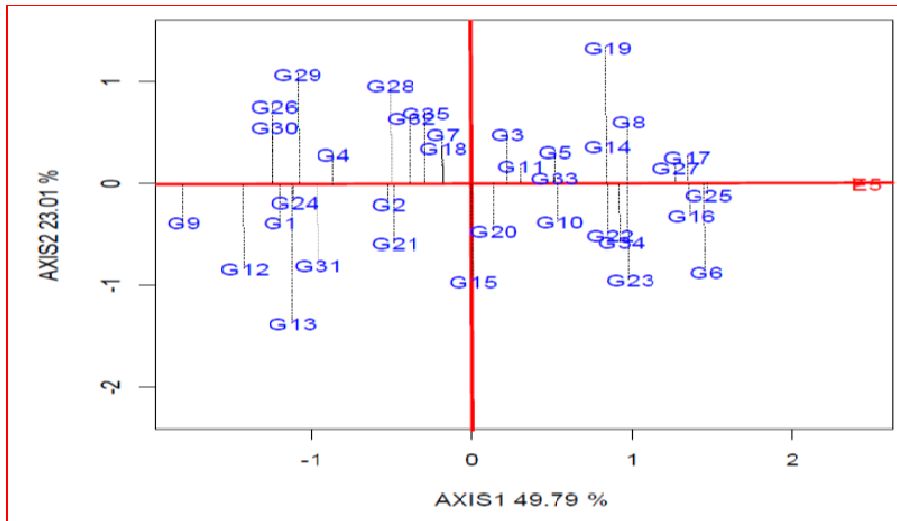
The average environment coordination view of the GGE biplot shows the ranking of genotypes based on the performance of an ideal genotypes (Fig. 5a). The relative

250 adaptation of the ideal genotype is evaluated by drawing a line passing through the biplot  
 251 origin and the best genotype marker. This line is called a genotype axis and is connected to  
 252 the best genotype [11]. Such ranking of genotypes based on performance of ideal genotype  
 253 revealed that G6 followed by G23, G34, G22, G16 and G25, respectively were among the  
 254 top yielding genotypes. Thus, G6 with the highest average yield was identified to be the ideal  
 255 genotype to evaluate the performance of test genotypes relative to it.

256  
 257 In ranking genotypes relative to the best environment, E5 was identified to be the best  
 258 environment to evaluate the performance of genotypes (Fig. 5b). Thus, the best environment  
 259 axis was drawn towards E5 and then, a perpendicular line to this axis that passes through  
 260 the biplot origin was also drawn to separate genotypes yielding above and below the mean  
 261 in the ideal environment. G6, G34, G25, G27, G16, G17, G23 and G22 which appeared on  
 262 the same direction with E5 were, therefore, found to perform above average in the  
 263 environment of E5.  
 264



265  
 266 5a)  
 267



268

269

270

271

272

273

274

275

276

277

278

279

280

281

282

283

284

285

286

287

288

289

290

291

292

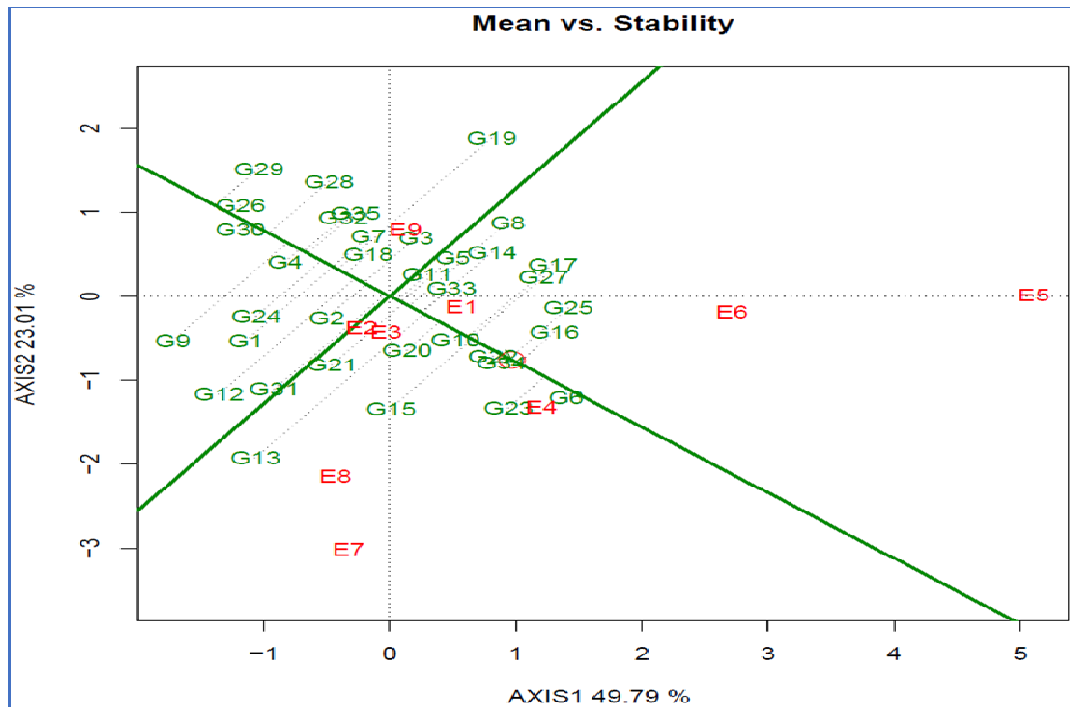
293

5b)

**Figure 5. Ranking genotypes relative to the ideal genotype (a) and the best environment (b)**

### 3.7. Genotypes mean yield and stability

The average environment coordination (AEC) is a line that passes through the origin and points to the higher mean yield across environments and it shows the increase in rank of genotypes towards the positive end [11]. This line was reported to be useful to evaluate mean grain yield and stability of genotypes [25,29,30]. According to such reports, genotypes considered to be stable are those appeared closer to the origin with the shortest vector from the AEC. Thus, Fig. 6 in the present study shows the mean performance and stability of the genotypes. Based on this, G6, G34, G22 and G10 with the shortest vector from the AEC axis were identified as the most stable genotypes while G13, G19, G12 and G9 with the longest vector from AEC were the most unstable genotypes. On the other hand, G6 followed by G23, G34, G16 and G25 scored higher grain yield whereas G29, G26, G30 and G28 attained inferior grain yield in all environments. An ideal genotype for a specific environment has the highest mean yield and responds best at that particular environment while it is less stable in the other environments and need to be recommended for a specific environment [23,26]. According to the same authors, ideal cultivars have large PC1 scores (high mean yield) and small PC2 scores (high stability) [21,26]. Thus, in the present study, G6, G25, G16, G23 and G34 which had larger PC1 and smaller PC2 scores were identified to be high yielding and stable.



294  
 295  
 296  
 297  
 298  
 299  
 300  
 301  
 302  
 303  
 304  
 305  
 306  
 307  
 308  
 309  
 310  
 311  
 312

**Figure6. Ranking based on mean performance and stability of 35 improved varieties across nine environments (E1-E9).**

#### 4. CONCLUSION

Overall, the studied tef varieties had sufficient variability for identifying stable and high yielding genotypes. The results of this study revealed the existence of four mega environments and seven tef genotypic groups. Based this study, E5 (Debre Zeit-1) is the most ideal environment for tef cultivation while E9 (Shambu) was the poor yielding and least representative environment. On the other hand, G6 (Melko) with the highest mean grain yield and moderate stability across wide range of environments was an ideal location to boost the productivity of tef in Ethiopia.

313  
314  
315  
316  
317  
318  
319  
320  
321  
322  
323  
324  
325  
326  
327  
328  
329  
330  
331  
332  
333  
334  
335  
336  
337  
338  
339  
340  
341  
342  
343  
344  
345  
346  
347  
348  
349  
350  
351  
352  
353  
354  
355  
356  
357  
358  
359  
360  
361  
362  
363  
364

## CONSENT (WHEREEVER APPLICABLE)

Not applicable.

## ETHICAL APPROVAL (WHEREEVER APPLICABLE)

Not applicable

## REFERENCES

1. Assefa K, Chanyalew S, Tadele Z. Tef, *Eragrostis tef* (Zucc.) Trotter. In: Patil JV, Editor. *Millets and Sorghum: Biology and Genetic Improvement*, 1<sup>st</sup> Ed. New York: Wiley & Sons; 2017.
2. Tolossa T, Kenehi G, Sefera T, Jarso M, Bekele Y. Genotypes X Environment Interaction and performance Stability for grain Yield in Field Pea (*Pisum sativum* L.) Genotypes. *International J. Plant Breeding* 2013; 7(2): 116-123.
3. Yan W, Kang MS. GGE Biplot Analysis: A Graphical Tool for Breeders, Geneticists and Agronomists. 1<sup>st</sup> Ed., Florida: CRC Press LLC; 2003.
4. Basford KE & Cooper M. Genotype x environment interactions and some considerations for their amplifications for wheat breeding in Australia. *Australian J. Agric. Res.*1998; 49: 154-174.
5. Kefyalew T, Tefera H, and Assefa K. Phenotypic diversity for qualitative and phenologic characters in germplasms collections of tef (*Eragrostis tef*). *Genet. Resour. Crop Evol.* 2000; 47: 73–80.
6. GrunebergWJ, ManiiueK, Zhang D, Hermann M. Genotypexenvironment interactions for a diverse of sweet potato clones evaluated across varying eco-geographic conditions in Peru. *Crop Sci.* 2005; 45: 2160-2171.
7. Kefyalew T. Genotype x environment interaction in tef. In: Tefera H, Belay G, Sorrells M (eds). *Narrowing the Rift: Tef Research and Development*. Proceedings of the International Workshop on Tef Genetics and Improvement, Debre Zeit: EARO; 2001.
8. Ashamo A, Belay G. Genotype x Environment Interaction Analysis of Tef Grown in Southern Ethiopia Using Additive Main Effects and Multiplicative Interaction Model. *Journal of Biology, Agriculture and Healthcare.* 2012; 2 (1):66-73.
9. Oliveira RLD, Von Pinho RG, Balestre M, Ferreira DV. Evaluation of maize hybrids and environmental stratification by the methods AMMI and GGE biplot. *Crop Breed Appl Biot.*2010; 10:247-253.
10. Munawar M, Hammad G, Shahbaz. Evaluation of maize (*Zea mays* L.) hybrids under different environments by GGE biplot analysis. *Am-Eurasian J Agric Environ Sci.*2013 ; 13 :1252-1257.
11. Yan W, Hunt LA, Sheng Q, Szlavnicz Z. Cultivar evaluation and Mega environment investigation based on the GGE biplot. *Crop Science.* 2000; 40:597-605
12. Gomez K A, Gomez A. *Statistical Procedures for Agricultural Research*. New York: John Wiley & Sons; 1984.
13. SAS (2002) System Analysis Software. Version 9.0. Cary, North Carolina: SAS Institute Inc; 2002.
14. Gauch HG. A simple protocol for AMMI analysis of yield trials. *Crop Sci.* 2013; 53: 1860-1869.

- 365 15. Payne R. A Guide to ANOVA and Design in GenStat. Hertfordshire, VSN International;  
366 2015
- 367 16. Lule D, Fetene M, de Villiers S, Tesfaye K. Additive Main Effects and Multiplicative  
368 Interactions (AMMI) and genotype by environment interaction (GGE) biplot analyses  
369 aid selection of high yielding and adapted finger millet varieties. *J Appl Biosci.*2014;  
370 76:6291–6303.
- 371 17. Pacheco A, Vargas M, Alvarado G, Rodríguez F, López M, Crossa, J et al. GEA-R  
372 (Genotype x Environment Analysis with R for Windows.) Version 4.0; 2016.
- 373 18. Hundera F, Tefera H, Assefa K, Tefera T, Kefyalew T, Girma, T. Grain yield and  
374 stability analysis in late maturing genotypes of tef [*Eragrostis tef* (Zucc.) Trotter]. *J.*  
375 *Genet. Breed.* 2000; 54: 13-18.
- 376 19. Kefyalew T. Assessment of genotype environment interaction for grain yield and Yield  
377 related traits in tef [*Eragrostis tef* (Zucc.) Trotter]. MSc thesis, School of Graduate  
378 Studies, Alemaya University; 1999.
- 379 20. Lule D. Assessment of genetic diversity, genotype by environment interaction, blast  
380 (*Magnaporthe oryzae*) disease resistance, and marker development for finger millet  
381 germplasm from Ethiopia and introduced. PhD Thesis, Addis Ababa: Addis Ababa  
382 University; 2015.
- 383 21. Crossa J. Statistical analysis of multi-location trials. *Advances in Agron.*1990; 44: 55-  
384 85
- 385 22. Gauch HG, Zobel RW. Identifying mega-environments and targeting genotypes. *Crop*  
386 *Sci* 1997; 37: 311-32
- 387 23. Yan W, Cornelius PL, Cross J, Hunt L.A. Biplot Analysis of Multi-environment Trial  
388 Data. *Crop Sci.* 2001; 41:656-663.
- 389 24. Farshadfar E, Hassan Z, Mohammadi R. GGE Biplot analysis of genotypes x  
390 environment interaction in chick pea genotypes. *European J. Experimental*  
391 *Biology*2011; 3 (1): 417-423
- 392 25. Yan W. Singular-value partitioning in biplot analysis of multi-environment trial data.  
393 *Agron. J.* 2002; 94:990-996.
- 394 26. Kroonenberg PM. Introduction to Biplots for GXE Tables, Brisbane: University of  
395 Queensland; 1995.
- 396 27. Yan W and Rajcan I. Biplot analysis of test sites and trait relations of soybean in  
397 Ontario. *CropSci*2002 ; 42 :11-20.
- 398 28. Yan W, Tinker NA. Biplot analysis of multi- environment trial data: Principles and  
399 applications. *Can J Plant Sci.* 2006; 86: 623-645
- 400 29. Yan W. GGE biplot: A Windows Application for Graphical Analysis of Multi  
401 environment Trial Data and Other Types of Two-Way Data. *Agron. J.* 2001; 93:1111-  
402 1118
- 403 30. Yan W, Hunt LA. Biplot analysis of diallel data. *Crop Sci.* 2000; 42:21–30