

Original Research Article

Influence of various strengthening systems of openings in composite steel-concrete beams

Abstract

Comment [sp1]: No full stop

This paper presents an experimental and numerical study carried out to investigate the flexural and shear behavior of concrete-steel composite beams with circular web openings strengthened using two different techniques around openings. Nine simply supported beams were constructed with different variables are chosen. One steel beam and eight concrete-steel composite beams were experimentally tested. The tested beams are of 1500 mm total length and BFI cross section of steel beam but composite beams were BFI steel section connected with concrete slab had 300 mm width and 70 mm depth, while that connected is done by headed stud shear connector. The tested specimens subjected to positive bending were loaded by one or two line load across the width of the concrete slab. The main parameters were the location of web openings, loading points, type of strengthening material (carbon fiber reinforced polymers CFRP or steel), strengthening techniques around openings (externally CFRP strips, and vertical steel links using steel plates placed on the top and bottom surface of beams anchored with fine threads, and number of CFRP strips layers. The effect of these parameters on the failure of modes, ultimate load, first cracking load and deflection were investigated. Moreover, a finite element models were developed by ANSYS (version 14) to simulate all the tested specimens, experimental test results were compared with FE results obtained. The results of both applied strengthening techniques were remarkably increased the beam strength, and the capacity retrieve of beams without openings. This study approved that steel links technique gave more prominent simplicity of use, and low cost. FEM models were in good agreement with the corresponding experimental ones. However, the calculated ultimate loads were slightly higher than the experimental ultimate loads up to 10 %.

Keywords: Composite beam, CFRP, Finite Element Modeling, Steel link, Strengthening, Web openings.

1. Introduction

Composite beams comprise of (missing) steel I-section attached by shear connectors to a concrete slab, so that the bending resistance and flexural stiffness of the beams were considerably higher than those of steel beam alone [1]. The transverse openings in web of the beams in steel framed buildings were necessary for the passage of utilities and services such as air condition ducts, electrical and data communication systems, fire protection systems, heating and cooling systems, and ventilation ducts. Ordinarily, these services and utilities were underneath the beams and for aesthetic reason are hid by a false ceiling, so producing a dead space. When these utilities pass through web openings of floor beams which result minimizing the floor height to give economic requirements and good architectural emphasis. However, the existence of web openings may have a significant negative effect [2], where the beam may be weakened in vicinity of the opening due to

44 reduction of flexural and shear strength, stiffness, and increasing of the deflection. The
45 reinforcement at the opening is needed to ensure the proper strength and stiffness of the beams [3].
46 Many researchers have studied the strength, behavior, and establish a design methodology for designing
47 beams with web openings [4, 5, 6, 7].

Comment [sp2]: Tense in correct

48 Recently, researchers tend to investigate on steel beams with strengthened web openings. Bonding
49 FRP composites to steel surface has been developed as a successive approach to strengthen steel
50 members instead of other conventional methods using steel plating to improve load bearing
51 capacity, fatigue life, and durability. Over the past two decades, CFRP carbon fiber reinforced
52 polymer has been used widely for strengthening of steel structures. CFRP is prevalent primarily
53 because of its relatively high stiffness. CFRP laminates for application with steel structures were
54 available as pultruded plates, and sheets. CFRP were typically bonded to the steel using two parts
55 epoxy adhesives.

Comment [sp3]: Tab missing

Comment [sp4]: CFRP to come after the full form in bracket

56 Many researchers investigated composite steel-concrete beams without and with web
57 openings (strengthened or un-strengthened) [8-13]. All researches results showed enhancement with
58 different ratios in the capacity of the strengthened beams, according to the parameters considered in
59 the study, compared with the beam kept un-strengthened as a control beam. The tested beams failed
60 with different failure modes. Clawson et al. [8] presented an experimental investigation to study
61 composite beams with rectangular web; six composite beams and one steel beam were tested.
62 Opening sizes were fixed; locations were varied to investigate moment-shear ratios. Web openings
63 reduce the strength, beams with high moment-shear ratios fail by general yielding in the steel below
64 the neutral axis and crushing in the concrete but beams with medium to low moment-shear ratios
65 fail by the formation of plastic hinges in the steel below the opening, accompanied by a diagonal
66 tension failure in the concrete slab, concrete in composite beams contributes significantly not only
67 to the flexural strength, but also to the shear strength of the beams at web openings. Hamoodi M. et
68 al. [9] studied the behavior of composite beams contain various number, location, and shape of web
69 openings. Fam A. et al. [10] investigated the strengthening of intact steel-concrete composite
70 girders and the repair of notched steel beams, using CFRP materials with different Young's
71 modulus. Flexural strength and stiffness of the composite girders were increased by 19% and 51%,
72 respectively. The outer CFRP layer de-bonded prematurely, followed by concrete crushing. It
73 showed that the higher the CFRP modulus, the higher the gain in stiffness, but the lower the gain in
74 flexural strength, due to the inherent reduction of tensile strength of CFRPs with higher modulus.
75 Bouazaouia L. et al. [11] presented the experimental results of the epoxy bonding connection in
76 concrete – steel composite beams and confirmed that bonding is very efficient. Prakash et al. [12]
77 carried out a FEM using ANSYS software for steel and composite beams without and with
78 reinforced centrally single rectangular web openings, the scope of their research deals with the
79 aspect ratio for the openings, deformation characteristics, and load carrying capacities. They
80 observed that the web opening in low shear and high moment region tends to perform better than
81 the web opening in high shear and low moment region. Also, they observed a considerable
82 reduction in the stresses and deflections by increasing the amount of strengthening of the web
83 opening. Mustafa B. et al. [13] presented the experimental and analytical results of composite
84 beams with web openings strengthened by CFRP laminates; the results show that improving of the
85 ductility and strength for strengthening beams.

Comment [sp5]: Rephrase sentence

Comment [sp6]: rephrase

Comment [sp7]: rephrase

86 The main objective of this study is to explore innovative strengthening techniques to improve
87 the flexure and shear resistance of steel-concrete composite beams with web openings under
88 different position concentric loading. The study explores the two strengthening systems, the first
89 technique is bonded CFRP strips, and second technique is steel link as low-cost strengthening
90 materials. To understand the effect of these strengthening systems were experimental tests have
91 been carried out on nine (9) beams were tested under one or two-line loading condition across the
92 width of the concrete slab till failure. The parameters considered were the effect of opening
93 locations, strengthening techniques, loading position, and number of CFRP strips layers. The beams
94 were instrumented to examine their behavior in terms of the first cracking load, ultimate load,

Comment [sp8]: rephrase

Comment [sp9]: rephrase

95 deflection, and ductility, the failure modes of the strengthened specimens were discussed in
96 comparison to the un-strengthened control specimens. Moreover, a finite element models were
97 developed by ANSYS (version 14) to simulate all the tested specimens.
98
99

100 **2. Experimental study**

101 *2.1. Details of test specimens*

102 The construction of the test specimens involved a total of nine simply beams. One of these steel
103 beam and another specimens were concrete-steel composite beams. All tested beams have 1500 mm
104 total length. The steel beam had standard cross section B.F.I. NO.10. The composite beams
105 consisted of steel B.F.I beams NO.10 connected with reinforced concrete slab in compression
106 flange, designed and cast with dimensions 300 mm wide, and 70 mm depth, reinforced by high
107 tensile strength steel bars of 10 mm diameters with 200 mm spacing in short direction and four bars
108 in long direction. Concrete slab is connected with steel beam by 42 headed stud shear connectors
109 with 10 mm diameters welded above the compression flange making good bond between the steel
110 beam and the concrete as shown in Fig. 1. All of the beams have eight vertical stiffener plates 10
111 mm thickness between the two flanges all over the two faces fixed to the web. Longitudinal and
112 cross section details of the beam specimens are shown in Fig.2. Six beams were tested under central
113 one-line load across the width of the concrete slab, and the other three beams were tested under
114 equal two-line loads across the width of the concrete slab until failure with an effective span of
115 1300 mm between the supports. The details of the beam specimens in each group are shown in
116 Table 1. The first group (NO.1) consists of two beams having different type (steel beam and
117 composite beam) without opening. The second group (NO.2) consists of two composite beams with
118 un-strengthened web openings, the difference between beams in this group were the location of
119 openings (one central opening or two edges openings). The third group (NO.3) consists of two
120 beams were strengthened around openings by steel link technique, the variables use in third group
121 were the loading conditions and the openings location. The last group (NO.4) consists of three
122 composite beams were strengthened around openings with EBR-Externally Bonded Reinforcement
123 CFRP strips, the variables use in this group were the loading conditions, openings location, and the
124 number of CFRP layers (three or four).

125 The designation of the test specimens can be explained as follows. the first two letters indicate
126 the type of tested specimens (BS for steel beam, BC for steel concrete composite beams), the
127 numbers in the middle indicates the number of web openings and testing loads, the last letter
128 indicates the technique of the strengthening around openings in the beam specimen (S for beams
129 were strengthened around openings by steel links, C for beams were strengthened around openings
130 by externally bonded CFRP strips), and the number next to C indicates the number of CFRP strips.

131 *2.2. Materials Properties*

132 *2.2.1 Concrete*

133 The materials used in concrete mixture were ordinary Portland cement (OPC- 42.5 grade), natural
134 sand with 2.65 fineness modulus, crushed dolomite with maximum aggregate size 16 mm, and clean
135 drinking fresh water is used for mixing and curing the specimens. Suitable mix of 25 Mpa cubic
136 compressive strength after 28 days was used. The constituents of concrete mix and its proportions
137 are presented in Table 2. Three cubes, 150×150×150 mm, were cast at the same time as the
138 specimens and cured alongside the specimens.

139 *2.2.2 Steel bars and shear studs*

Comment [sp10]: spelling
Comment [sp11]: tense
Comment [sp12]: delete 'total'

Comment [sp13]: breadth
Comment [sp14]: length
Comment [sp15]: of
Comment [sp16]: insert 'thus'
Comment [sp17]: thick

Comment [sp18]: insert 'which'
Comment [sp19]: used
Comment [sp20]: insert 'which'
Comment [sp21]: after the full form
Comment [sp22]: used

Comment [sp23]: MPa

140 The longitudinal steel were deformed steel with nominal yield strength of 360 MPa used for all
141 above concrete slab as middle reinforcement, 10 mm diameter of high tensile steel was used for all
142 beams as headed stud shear connectors with nominal yield strength of 460 MPa. The modulus of
143 elasticity for all steel bars was 200 GPa.
144

Comment [sp24]: rephrase

145

146

147

148

149

150



151 a- Shear connectors with 10 mm diameters welded above the compression flange

152



b- Wooden form and reinforcement of concrete slab



c-Casting of R.C. slab

153

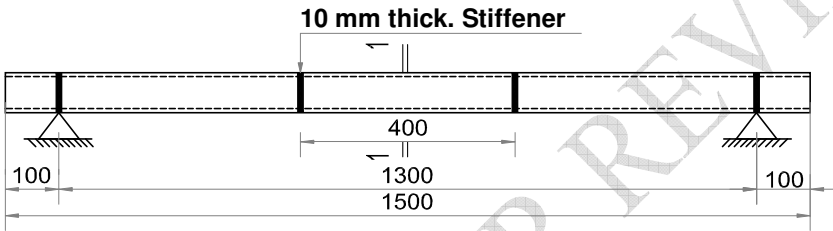
Fig. 1 Preparation of composite beams

154

Table 1-Test matrix

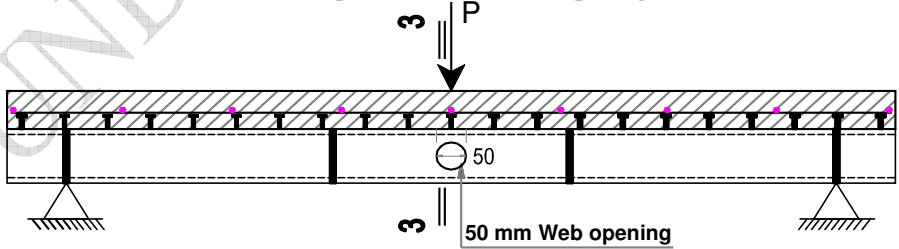
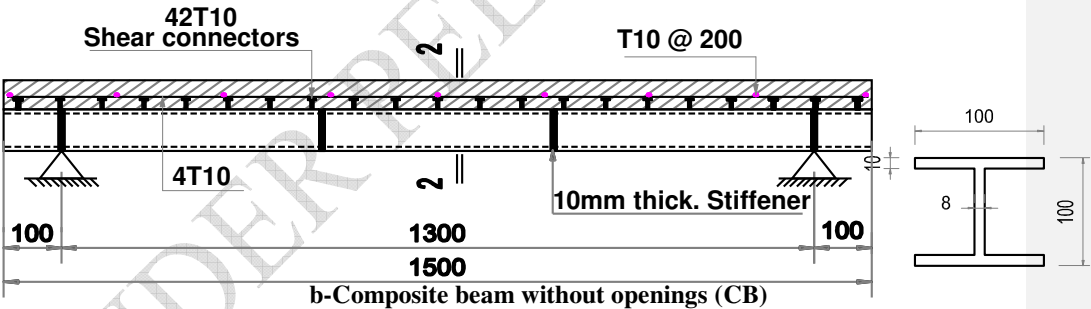
Group	Beam code	Strengthening systems			
		No. of web openings	Location of openings	Strengthening systems	Testing load
NO.1	SB	None	-----	None	One line
	CB	None	-----	None	One line
NO.2	CB1	1	Center	None	One line
	CB2	2	Two edges	None	Two lines
NO.3	CB1-S	1	Center	2*2 steel links	One line

	CB2-S	2	Two edges	4*2 steel links	Two lines
	CB2-C3	2	Two edges	3 CFRP strips before and after openings	Two lines
NO.4	CB1-C3	1	Center	3 CFRP strips before and after opening	One line
	CB1-C4	1	Center	4 CFRP strips before and after opening	One line

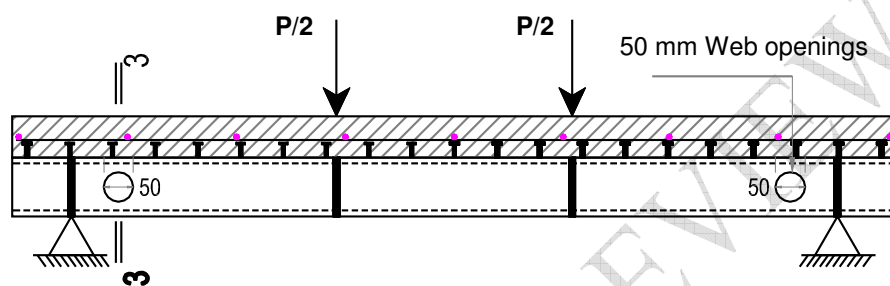


a- Steel beam B.F.I NO.100 (SB)

Sec. 1-1



c- Composite beam with one central opening (CB1)



d- Composite beam with two edges openings (CB2)

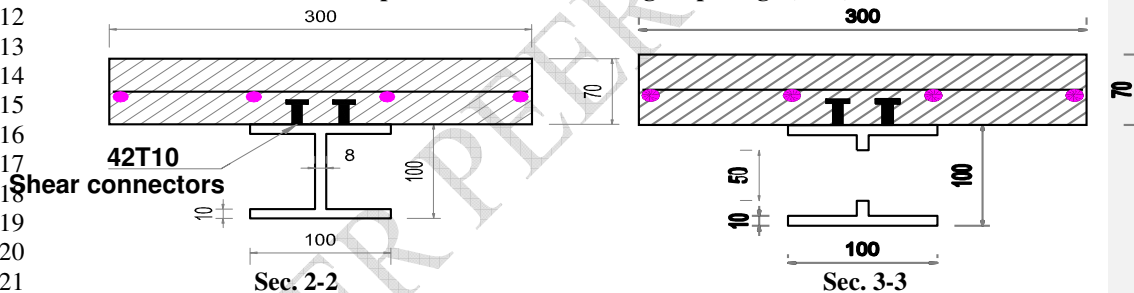


Fig. 2 Longitudinal and cross section details of beam specimens (Note: all dimensions in mm)

2.2.3 CFRP sheets

Unidirectional CFRP were used for strengthening the openings region. Table 3 illustrated the mechanical properties of the CFRP. The CFRP strips were bonded to the beam specimens with an epoxy resin, Sikdasure 330. For applying CFRP around the web openings in beam specimens, the bonded faces were cleaned until any loose particle was removed. Epoxy adhesive was applied to the steel face in thin layer and pre-cut CFRP strips layers were wrapped over it. The strips around steel beams cross section were passed firmly and rolled uniformly by plastic rollers to squeeze out excess epoxy and air bubbles. For applying more layers, epoxy was poured over the last layer and the procedure was repeated.

Comment [sp25]: rephrase

2.2.4 Epoxy

The epoxy used in this investigation was (Sikadur-330) which is a product of Sika, it consists of two compounds, which were added together and mixed rapidly to assure its homogeneity before using. The mechanical properties of used epoxy are given in Table 4.

Comment [sp26]: ensure uniformity in name

2.3. Test procedure

The tests were carried out in the Reinforced Concrete Lab at Benha Faculty of Engineering. The loading system consisted of rigid system of reaction frame, 100 ton maximum capacity, and hydraulic jack of 100 ton maximum capacity, also connected to electrical pump pressure. The specimens were simply supported over a clear span of 1300 mm. Six specimens were prepared for testing under central line load across the width of the concrete slab. A steel spreader beam that was supported on two steel rollers covering the entire width of the top concrete slab was used to transfer the load to the tested specimen through two loading of 40 mm spacing at the mid span of the beam for author three beams. Vertical deflection, first cracking load and ultimate failure load, were recorded. Three linear variable differential transformers (LVDT) were used to record the deflection at three detected points, as shown in Fig. 3. Propagation of cracks was marked after each load increment up to failure.

Comment [sp27]: rephrase

Table 2- The constituents of concrete mix

Compressive strength Kg/cm ²	Cement (Kg/m ³)	Crushed dolomite (Kg/m ³)	Sand (Kg/m ³)	Water (Liter/m ³)
250	300	1200	600	175

Table 3- Mechanical properties of CFRP

Property	Value
Fabric design thickness (mm)	0.13
Weight / area (g/m ²)	225
Strips fabric width (mm)	50
Tensile strength (N/mm ²)	4300
Elasticity modulus (N/mm ²)	238000
Strain at failure	1.80%

Table 4- Mechanical properties of Sikadur-330

Property	Value
Compressive strength	1100 kg/cm ²
Adhesive strength on steel	260 kg/cm ²
Adhesive strength on concrete	20 kg/cm ² (concrete failure)
Modulus of elasticity	128000 kg/cm ²

2.4. Preparation of strengthening systems

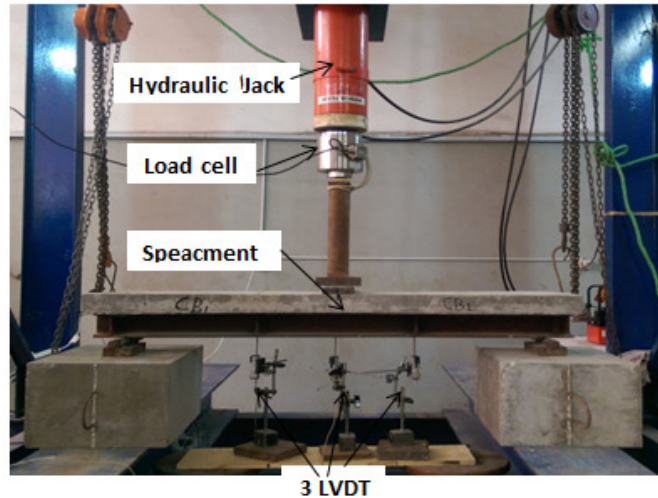
2.4.1 Installation of bonded CFRP strips

In order to achieve a strong bond, the surface of the steel beams was prepared by air brushing to remove dust and fine particles. Following cleaning, a uniform thin layer of the epoxy adhesive was applied by palette knife to the surface of the steel beam. The CFRP strips were placed in position on the beam surface and pressed by hand. To ensure a good bond with steel, a uniform pressure was applied along the entire length of the strips. The CFRP strips with 50 mm width and placed around the steel beam cross section before and after each opening (Fig. 4a, b).

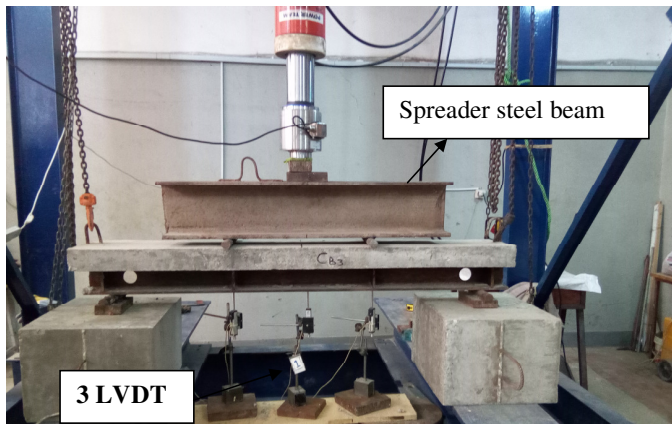
Comment [sp28]: for 'and' use 'were'

260 **2.4.2 Installation of steel links technique**

261 The proposed new strengthening system consisted of steel links which were locally fabricated using
262 high tensile steel bars of 10 mm diameter fixed at both ends by two steel plates of 10 mm thickness
263 and 30 mm width. Steel links were installed through the holes which penetrated the total concrete
264 slab thickness and steel beam flanges. Links in the transverse direction was connected to the steel
265 stall plates at top and bottom by steel nuts. Four steel links were used in vertical direction around
266 each of web openings (Fig. 4c, d).

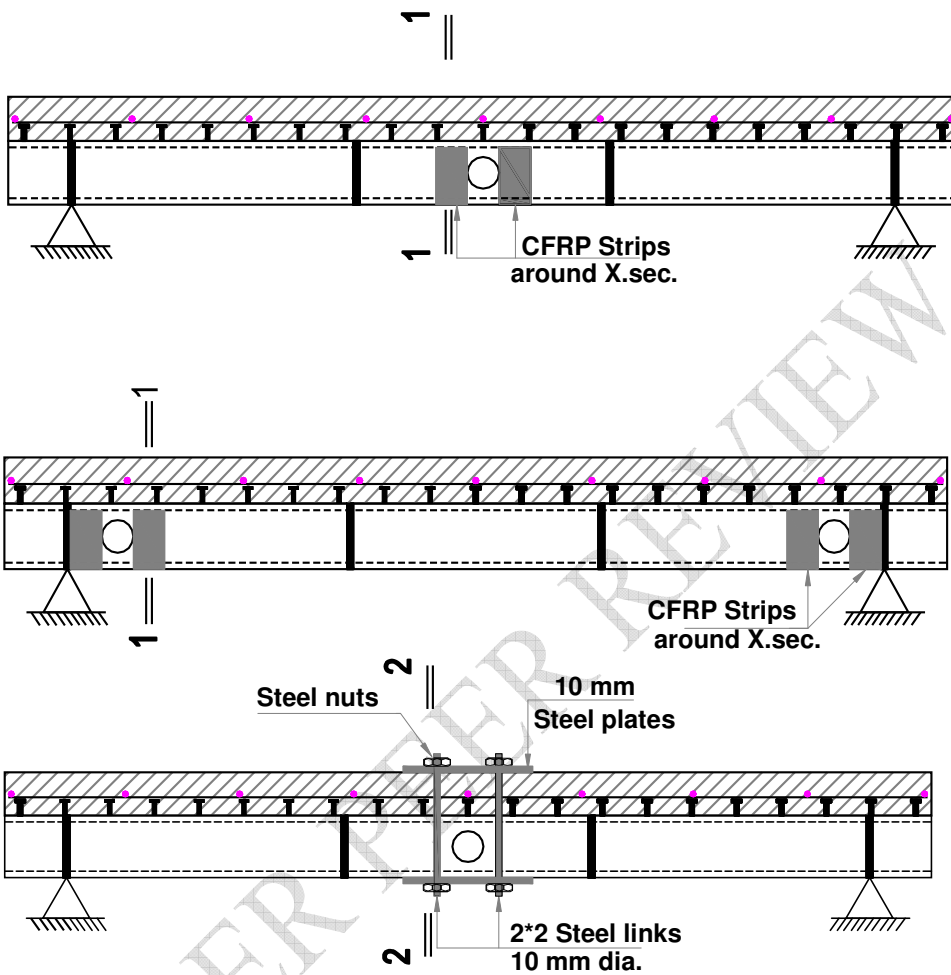


282 **a. Central one-line load across the width of the concrete slab**



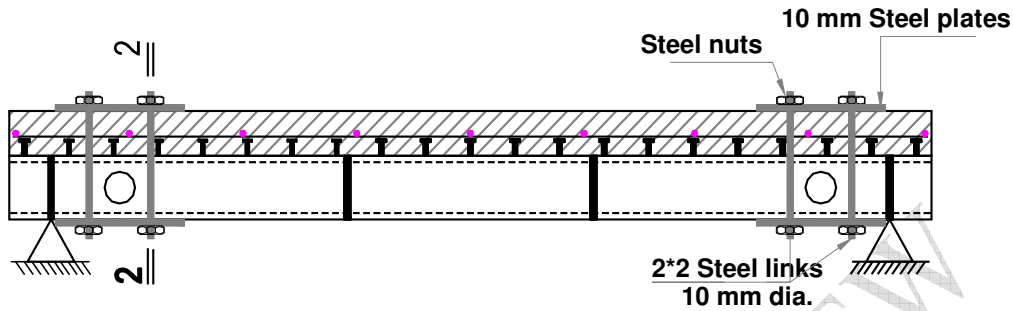
**3b. Two-line loads across
the width of the concrete
slab**

Fig. 3 Test set up & LVDT locations



a -

CFRP-strips before and after web openings around cross section



b- Two steel-links before and after each web openings

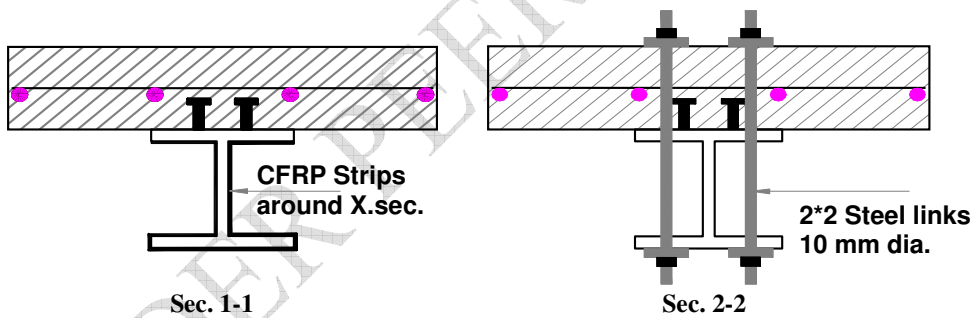


Fig. 4 Description of different strengthening techniques (Note: all dimensions in mm)

3. Experimental results and discussions

For the all tested beams, the relationship between the central deflection at mid-point and the applied load was plotted and the crack propagation was monitored with load increasing till failure, Also, the cracking load and ultimate load were recorded. Comparisons between the results of different specimens were carried out to reveal the effect of the parameters considered in this study.

3.1. Load-deflection relationships

Figs. 5-10 show the load versus mid-span deflection of beam specimens according to each variable. The load deflection curve of the composite beam without web openings is shown in some figures for comparison purpose.

343
344

3.1.1. Effect of beam type

345 In this study, two different beam types were used. Beam SB was steel beam (B.F.I 100), CB Composite
346 beam consist from the same steel I-section attached by shear connectors to a concrete slab, As expected,
347 using the composite led to improve the flexural behavior, as shown in Fig. 5. The ultimate load was higher
348 than that of steel specimen by 38.6%. Also, the deflection was reduced by 56.5% at ultimate recorded load of
349 control specimen.

Comment [sp29]: no capital

Comment [sp30]: rephrase

350
351

3.1.2. Effect of web openings

352 The beam CB1 is construction with one central circular opening, 50 mm diameter (equal to 62.5% web
353 height). Load-deflection curve indicated linear relation up to first cracking load of concrete slab, CB1 failed
354 after applying load of 190 KN with mid span deflation equal 20.2 mm. It means that there is a reduction of
355 17.4% in ultimate load strength, and increasing deflection by 52% compared with the control beam CB
356 without openings as shown in Fig. 6; this variation is due to the effect of the opening in mid span.

Comment [sp31]: rephrase

357
358

3.1.3. Effect of strengthening technique

359 In this study, two strengthening systems were used, the first technique is bonded CFRP strips, and
360 second technique is steel link as low-cost strengthening materials. Two strengthening systems used
361 in this study led to a significant increase in the strength and the rigidity of the strengthened
362 composite beams in comparison with the control specimens. At the same loading level, lower
363 deflection values were recorded for strengthened specimens, either with CFRP strips or steel links,
364 in comparison with the control specimens which having the same web openings without
365 strengthening.

366
367

3.1.3.1. Specimens subjected to combined bending and shear

368 The effect of this parameter could be observed by studying the behavior of specimens (CB1-C3, and
369 CB1-S), as shown in Fig. 7, the two strengthening techniques led to increase the ultimate load by
370 21% and 15.8 % for the first and second technique, respectively compared to the control specimen
371 (CB1), also, the deflection at maximum recorded load of control specimen was reduced by 56.4%
372 and 48%, respectively in compared with control specimen. The effect of two techniques on
373 composite beams deletes the effect of opening on strengthened beams, approximately equal to
374 capacity of control beam without openings.

Comment [sp32]: rephrase

Comment [sp33]: use a better word

375
376

3.1.3.2. Specimens subjected to pure shear

377 To study the effect of the strengthening techniques of openings in shear zone, the specimens CB2-
378 C3 and CB2-S were constructed with two edges openings and strengthened by the same two
379 strengthening systems were used in flexure openings. As shown in Fig. 8, it is evident that both
380 techniques used to shear strengthening around the openings remarkably increased the beam shear
381 strength. Comparing the results of beam specimen (CB2) having web openings at two edges and
382 without strengthened, the ultimate load gain caused by strengthening were 30.4% for first and
383 second techniques.

Comment [sp34]: rephrase

384
385

3.1.4. Effect of number of CFRP layers

386 The used number of CFRP strips layers around cross section before and after opening 3& 4 layers,
387 respectively. The effect of this parameter could be observed by studying the behavior of specimens
388 CB2-C3 and CB2-C4, as shown in Fig. 9. As expected, adding the strengthening layers led to
389 improve the flexural behavior. The ultimate load was higher than that of control specimen by 21%

and 26.3% for strengthening number of CFRP layers 3 and 4, respectively. Also, the deflection was reduced by 56.4% and 70.3%, respectively at ultimate recorded load of control specimen. Comparing the results of web openings strengthened with different amount of CFRP strips, it can be seen that increasing the number of layers increased the strength of beam specimens.

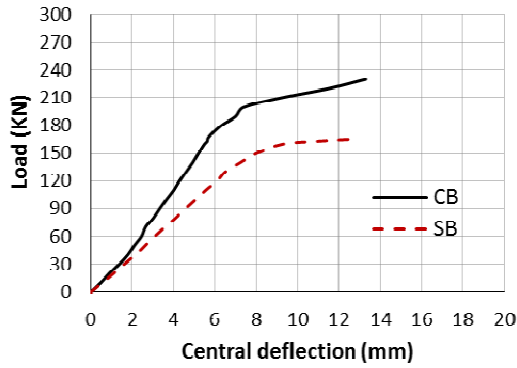


Fig. 5 Effect of beam type

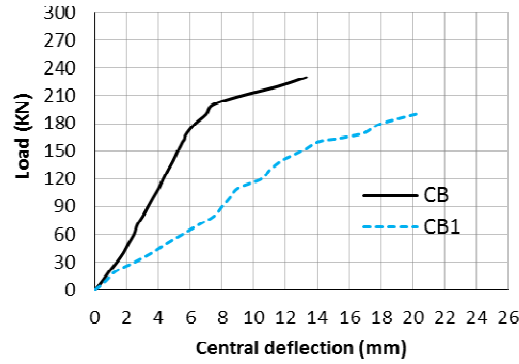


Fig. 6 Effect of web openings

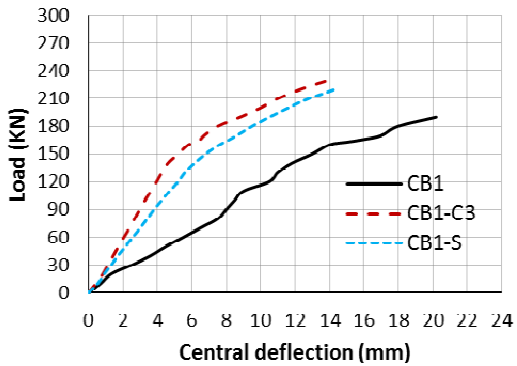


Fig. 7 Effect of strengthening technique (Central web opening)

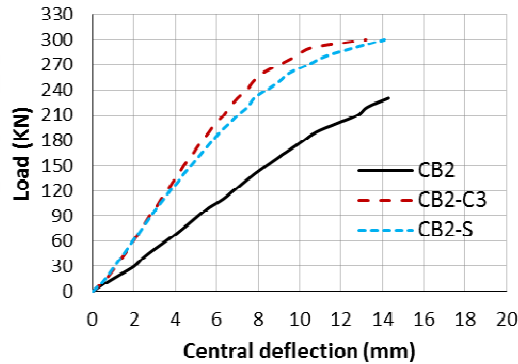


Fig. 8 Effect of strengthening technique (Two edges web openings)

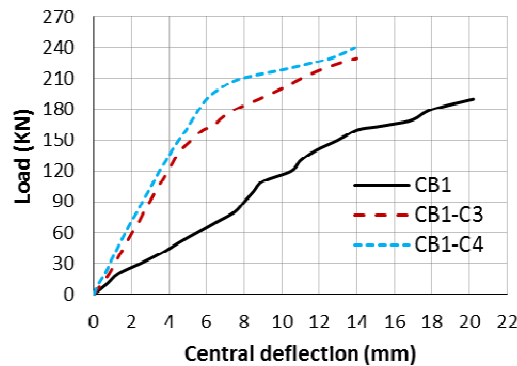


Fig. 9 Effect of number of CFRP layers on load-deflection relationships

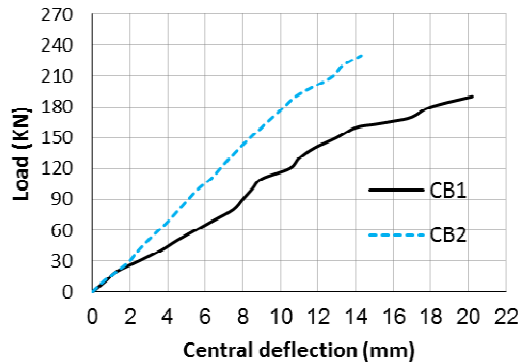


Fig. 10 Effect of location of web openings

443
444
445
446
447
448
449

3.1.5. Effect of location of web openings

Two locations of web openings were used, the first location at mid-span (combined bending and shear) and the second location at the beam edges (shear zone). Fig. 10 shows the effect of the location for the circular web openings. This figure shows that the effect of the web openings at edges is slightly on the ultimate load because of bending moment in edge span equal to zero, while the effect of the web opening at center of beam (combined bending and shear zone) was very effect on ultimate load and central deflection.

Comment [sp35]: rephrase

3.2. Ultimate strength

Table 5 shows the ultimate load ($P_{ult.}$) recorded experimentally for the tested specimens. In flexure zone the use of steel links gave an increase of ultimate load by 15.8% of that recorded for control specimen and the use of CFRP strips with the different numbers of layers three and four layers increased of the ultimate load by 21% and 26.3%, respectively. Also, in shear zone the use of steel links and three layers of CFRP strips gave an increase of ultimate load by 15.8% of that recorded for control specimen and four layers increased of the ultimate load by 21% and 26.3%, respectively. Fig.11 shows a comparison between the tested specimens with respect to cracking and ultimate loads. For control specimen CB1, the first crack was observed at 57.8% of the ultimate load. However, the first crack was observed at 52.2%, 52.1%, and 50% of the ultimate loads for strengthened specimens CB1-S, CB1-C3 and CB1-C4, respectively. The former result means that the strengthening systems conducted to increase the ultimate load of the tested specimens rather than the first crack load. Fig. 12 shows the effect of number of CFRP layers on ultimate and first cracking loads.

Comment [sp36]: rephrase

3.3. Cracking behavior and failure made

Comment [sp37]: spelling

For all specimens, the first crack was recorded, cracks propagation was monitored, and plane of failure was observed to investigate the cracking and failure behavior, the load value corresponding to cracking initiation (P_{cr}) is shown in Table (5). The tested specimens were loaded under one-line vertical load, failed due to flexure, flexural cracks were initiated occurred randomly in the maximum moment region on the top RC slab; as the load increased, cracks formed along the entire length of the constant moment region, including the opening region. At failure, excessive deflection occurred due to yielding of steel beam at mid span which was followed, as result, by crushing of concrete slab at middle and yielding may have occurred firstly at the bottom tee of the web opening due to tensile stresses, as shown in Fig. 13. For beams strengthened with CFRP strips, and with increasing the applied load, the failure was due to rupture of the FRP. The strengthening of the specimen caused a significant increase of the first crack load. Using steel links and CFRP strips led to improve its value by 5%, and 9%, respectively, in comparison with control specimen. The tested specimens were loaded under two-line vertical load failed in shear. Crack lines appeared at the shear zone. The number of cracks increased and followed by the formation of diagonal cracks. The crack width increased before failure, and the shear failure was sudden and initiated at points of the applied loads to the supports, also the strengthened specimens failed in shear with diagonal cracks initiated from the top corner of concrete slab towards the point load and from the bottom corner towards the support. Fig. 14 shows typical shear failure of beam specimens.

Comment [sp38]: rephrase

Comment [sp39]: rephrase the sentence

Comment [sp40]: rephrase the sentence

Comment [sp41]: rephrase

490

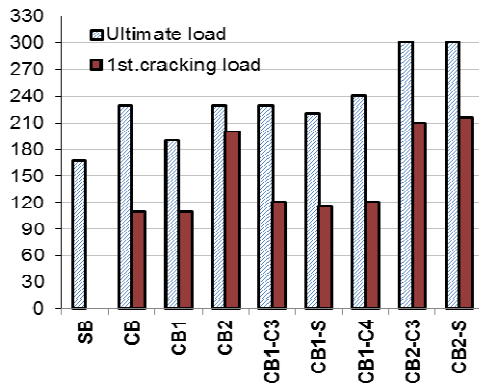


Fig.11 Cracking and ultimate loads comparison for all tested beams

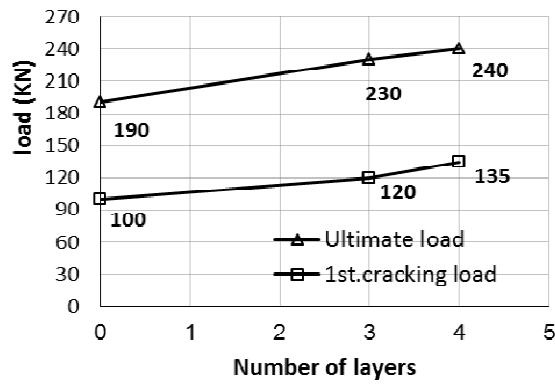


Fig.12 Effect of number of CFRP layers on load-deflection

Table 5-Summary of test results

Beam code	1 st Cracking		Ultimate		Ductility ratio $\Delta u_l/\Delta c_r$	Ki	Ku	Stiffness degradation	Mode of failure
	Load KN	Defl. mm	Load KN	Defl. mm		KN/mm			
SB	-----	-----	166	13	-----	-----	-----	-----	Flexural failure
CB	110	4.01	230	13.3	3.32	27.4	12.9	52.91	Flexural failure
CB1	110	8.5	190	20.2	2.24	12.2	7.14	41.56	Flexural failure
CB2	200	11.8	230	14.3	1.21	16.9	12	29.2	Shear failure
CB1-S	115	4.95	220	14.3	2.89	23.2	11.2	51.66	Flexural failure
CB2-S	215	7.25	300	14.1	1.94	29.7	12.4	58.16	Shear failure
CB2-C3	210	6.33	300	13.2	2.09	33.2	13.1	61.51	Shear failure
CB1-C3	120	3.95	230	14	3.54	30.4	10.9	63.97	Flexural failure

CB1-C4	120	3.85	240	14.3	3.97	34.5	11.6	66.28	Flexural failure
--------	-----	------	-----	------	------	------	------	-------	------------------

Where: $K_i = P_{cr}/\Delta_{cr}$, $K_u = (P_{ul}-P_{cr})/(\Delta_u-\Delta_{cr})$, and stiffness degradation = $(K_i-K_u)*100/K_i$

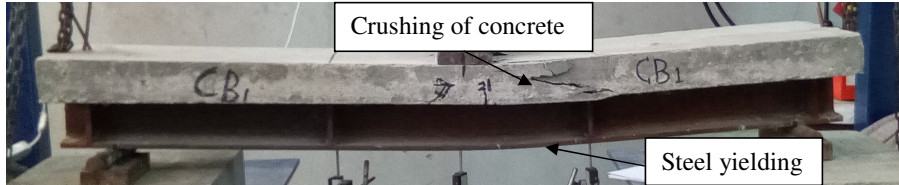


Fig.13 Typical flexure failure for composite beams (loaded under one vertical)

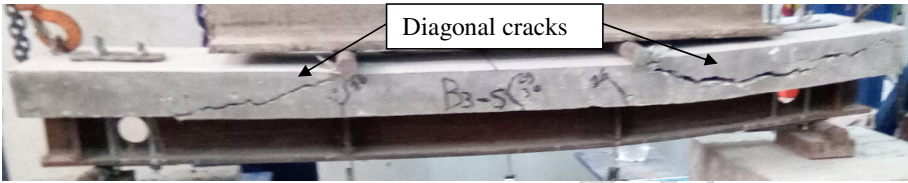


Fig.14 Typical shear failure for composite beams (loaded under two vertical)

3.4. Ductility

Ductility means the ability of a member to undergo inelastic deformations beyond the yield deformation without any considerable loss of load bearing capacity. The ductility of the specimens was considered as the ratio of the deflection at ultimate load to the deflection at first crack load as shown in Table 5. Generally, specimens strengthened by adding CFRP strips around web openings are better than specimens strengthened by steel links as shown in Fig. 15.

3.5. Stiffness

The un-cracked stiffness K_i and the ultimate stiffness K_u were obtained from the load-deflection values of the tested specimens, as presented in Table. 5. It shows that the un-cracked stiffness (K_i) is almost, increased for the all strengthened composite beams. Adding strengthening elements steel link, CFRP strips around openings led to increase K_i , while opening without strengthening led to decrease K_i in compared with control specimen without openings as shown in Fig. 16.

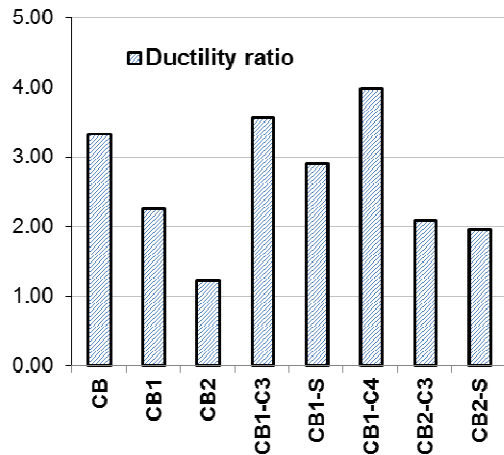


Fig.15 Ductility ratio comparison for all tested composite beams

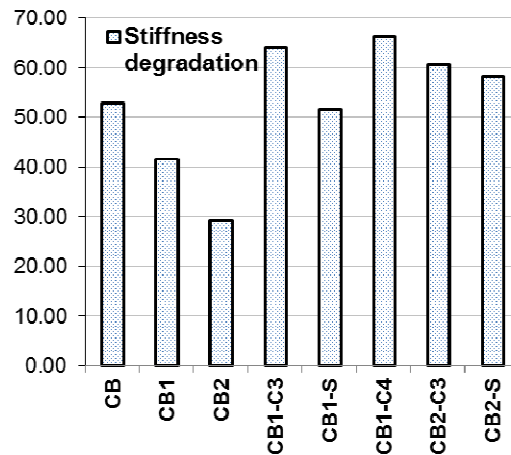


Fig.16 Stiffness degradation comparison for all tested composite beams

4. Finite element analysis

In this part, the tested specimens were simulated using the FEA program ANSYS (version 14). The numerical results of the simulated composite beams were compared with the experimental results. The following summarizes details of the modeling approaches.

4.1. Element types and materials

Steel beam was modeled with 3D solid element **SOLID 45**, these eight node elements with three translational degrees of freedom per node. The concrete was modeled with a higher order 3-D element named **SOLID 65**. **LINK180** is used to define reinforcement steel bars and steel links, the interface between the concrete slab and the steel beam was idealized by representing each stud as one nonlinear spring element **COMBINE 39** at the actual location of the shear stud. **SOLID185** is used to define CFRP sheets, while **CONTACT 52** was used to describe the epoxy layer. Many materials were used in modeling the specimens such as concrete, steel reinforcement, CFRP sheets and epoxy resin Sikadur-330. The compressive stress-strain relationship of concrete is considered to be linear from zero to one-half the ultimate compressive strength, and the strain at the ultimate compressive strength ranges from 0.002 to 0.003. Reinforcement bars and shear connectors were modeled as a nonlinear and isotropic material. Epoxy sikadur-330 was modeled as linear isotropic material. CFRP strips were modeled by linear orthotropic material. The geometry and material properties of the specimens in section 2 were applied in this model.

Comment [sp42]: Author could give the mesh density

Comment [sp43]: Author to elaborate more on the modeling details

4.2. Meshing and boundary conditions

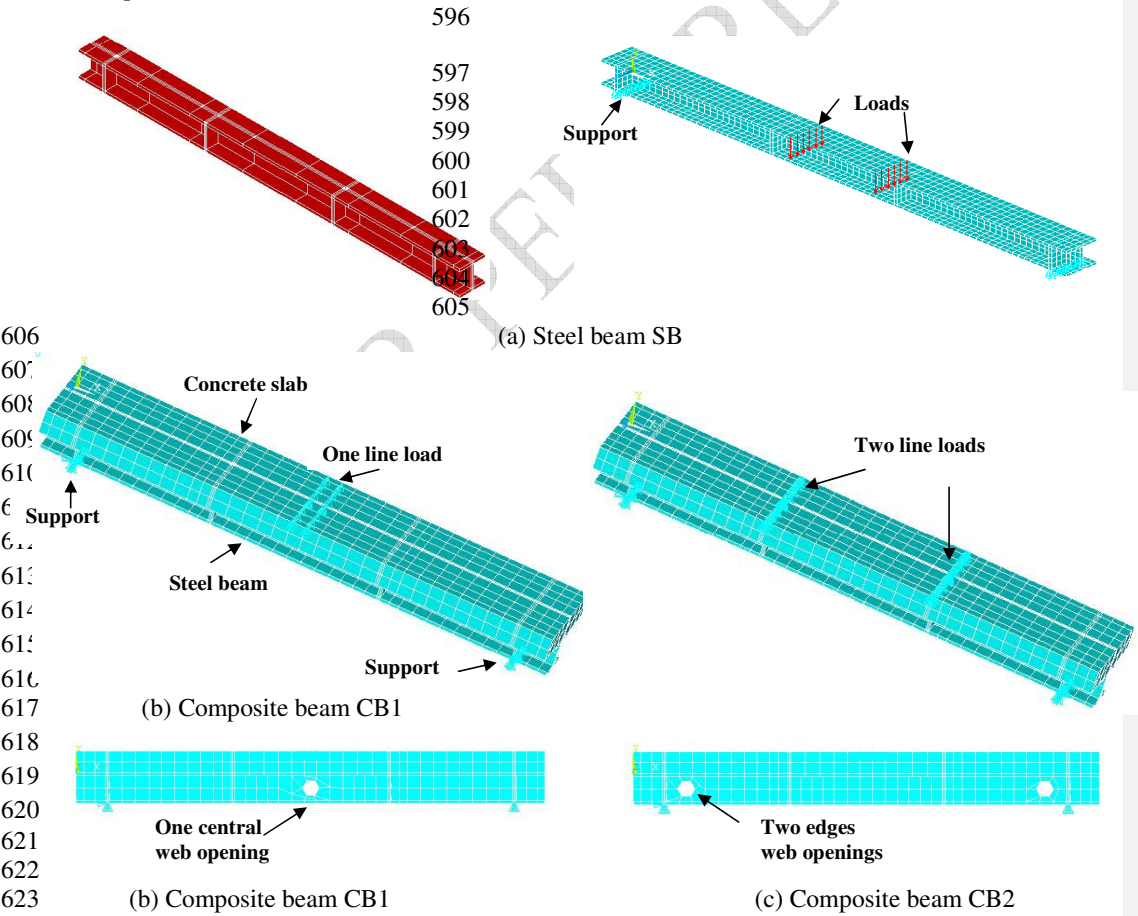
A constructed FE model is shown in Fig.17. A relatively fine mesh having a maximum element length of 50 mm. The simply-supported beam condition was represented by restraining the nodes at supports.

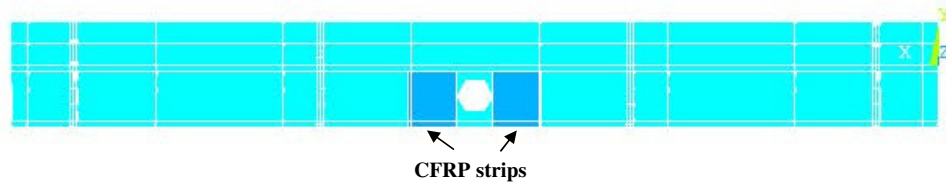
4.3. Loading model

577 In nonlinear analysis, the total load applied to a finite element model is divided into a series of load
578 increments called load steps. At the completion of each incremental solution, the stiffness matrix is
579 adjusted to reflect nonlinear changes in structural stiffness before proceeding to the next increment.
580 ANSYS uses Newton-Raphson equilibrium iterations provide convergence at the end of each load
581 increment within tolerance limits. In this study, convergence criteria were based on force and
582 displacement, and the convergence tolerance limits were initially selected by the ANSYS program.
583

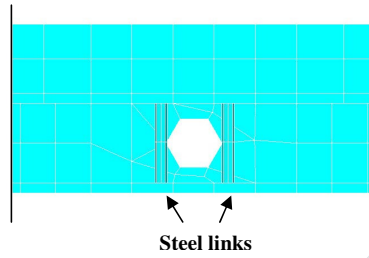
584 4.4. Verification of the finite element model

585 The experimental results obtained from testing of the tested specimens are compared with those
586 obtained from the finite element modeling. The experimental and numerical results of load versus
587 mid-span deflection are compared for each specimen, as shown in Fig.18. The typical deformed
588 shape of the finite element models obtained by ANSYS is as shown in Fig. 19. Table 6 presents a
589 comparison between the numerical and experimental ultimate loads. It can be noticed that the ratio
590 of the numerical ultimate load to experimental one ranged from 1.043 to 1.1. It can be observed that
591 ANSYS almost predicts a higher ultimate load compared to the load observed during experiments.
592 This comparison shows a good agreement between experimental work and F.E.A. where identical
593 results were obtained before yielding, while the difference was shown near failure for load-
594 deflection curve while the first cracking load, ultimate load and ultimate mid-span deflection have
595 acceptable data between them.





(d) Composite beam strengthened with CFRP strips around openings



(e) Composite beam strengthened with steel links around openings

Fig.17: The developed FE models

Table 6 - Comparison of the experimental results and finite element model

Beam code	Ultimate Load (KN)		Deviation	Deflection in mid span at ultimate load (mm)		Deviation
	Exp.	FEA		Exp.	FEA	
SB	166	156	6.4 %	13	11.7	9.0 %
CB	230	240	4.3 %	13.3	12.6	5.5 %
CB1	190	180	5.5 %	20.2	17	18.8 %
CB2	230	210	9.5 %	14.3	13	10 %
CB1-S	220	240	9 %	14.3	13.5	5.9 %
CB2-S	300	320	6.6 %	14.1	12.8	9.1 %
CB2-C3	300	330	10 %	13.2	13	1.5 %
CB1-C3	230	240	4.3 %	14	13	7.7 %
CB1-C4	240	260	8.3 %	14.3	12.6	13 %

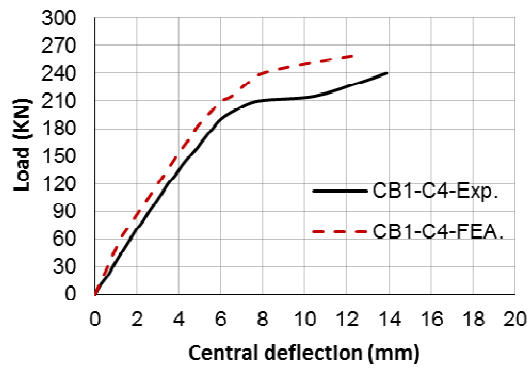
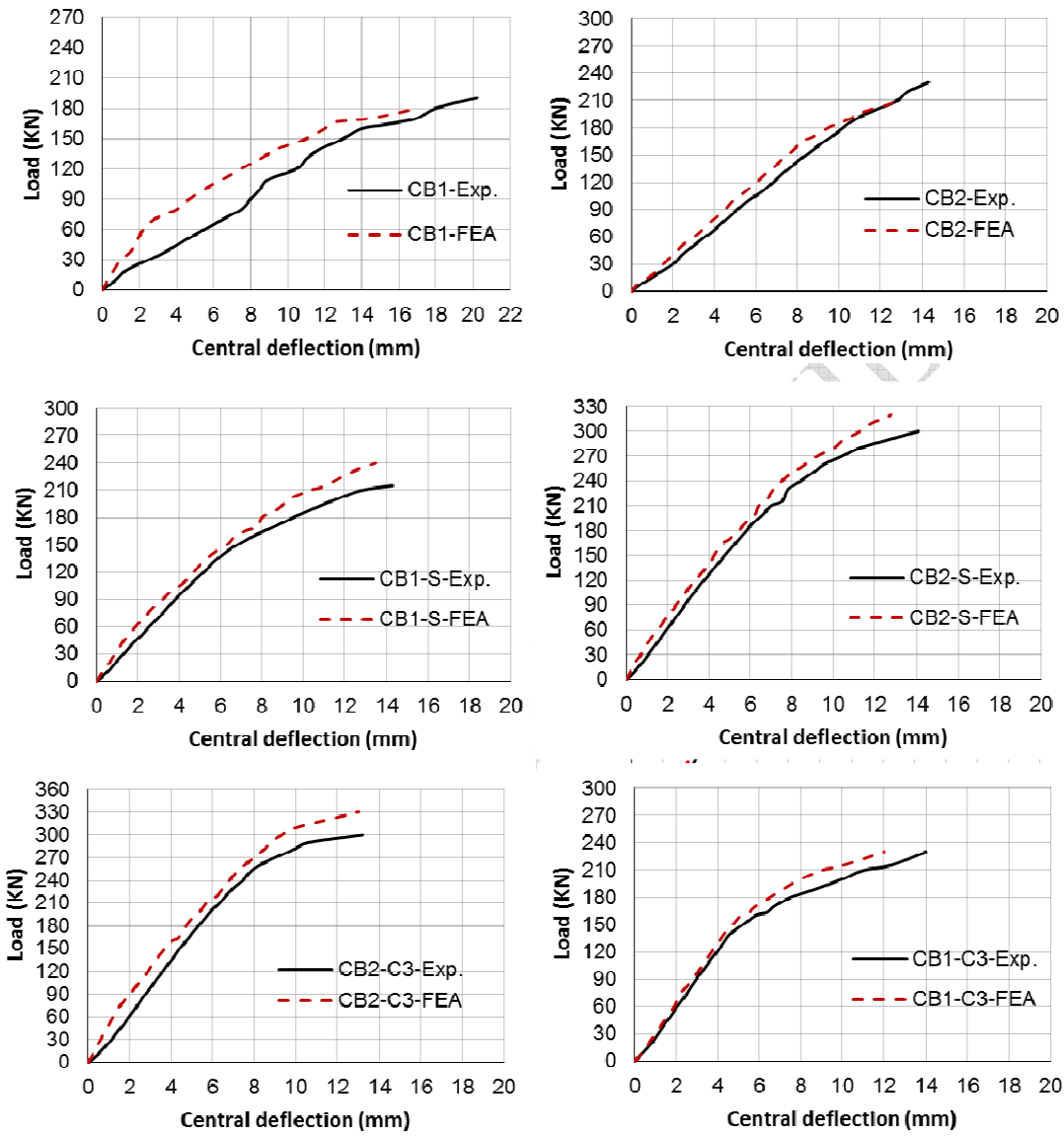


Fig.18: Comparison of experimental and FEM load – deflection curves



Fig.19: Deformed shapes of finite element models

5. Conclusions

From the results and discussion above, the following conclusions can be made:

- The concrete slab confers rigidity to steel beam. The presence of un-strengthened web openings in composite beams causes a significant reduction in the beam capacity.
- The stiffness of the un-strengthened composite beams significantly decreased with the web opening.
- Both the flexure and shear strength of composite beams with web openings were increased using the two strengthening techniques. The behavior of the beams against openings is improved.
- The experimental results confirm that the two strengthening techniques of CFRP and steel links systems were applicable and can increase the capacity of the composite beams.
- In this study, the effect of CFRP and steel links delete the effect of openings on ultimate load where the ultimate load of strengthened beams was approximately equal to ultimate load of control beam without openings.
- CFRP and steel links strengthening systems were effective in improving the flexural strength of the tested specimens by 26.3 % and 15.8 %, respectively. Also, the deflections were reduced significantly by 48 % and 70.3 % compared to the control specimen
- Strengthening around edges web openings of composite beams using CFRP or steel links remarkably increased the shear strength, also, ultimate load capacity increased by 30.4 %.
- Applying the strengthening systems around openings used in this study decreased vertical deflection of composite beam, appropriately, especially in the plastic zone.
- The two methods used for strengthening of composite beams with web openings in this research were effective to restore and improve the structural performance in terms of ductility, and stiffness.
- Increasing the number of CFRP layers around openings leads to increase the stiffness of composite beam and therefore, increasing in ultimate load capacity.

Comment [sp44]: Table of values should be included

Comment [sp45]: change tense

Comment [sp46]: rephrase

- This study approved that steel links technique gave more prominent simplicity of use, and low cost.
- The numerical ultimate loads were in good agreement with those obtained from experimental results; the load-deflection relations obtained from numerical analysis have a linear relation up to crack load which almost coincides with the experimental values.

References

1. T. M. Cameira Neto, "Analysis and Design of Composite Beams with Web Openings ", Institute Superior Técnico, Lisbon University, Av. Rovisco Pais, 1049-001 Lisbon – Portugal, July 2014.
2. C.C. Chen, C.Y. Li and M.C. Kuo, "Experimental Study of Steel Reinforced Concrete Beams with Web Openings", 14th World Conference on Earthquake Engineering, Beijing, China, October 2008.
3. Fattouh M. F. Shaker and M. Shahat, " Strengthening of web opening in non-compact steel girders", IOSR Journal of Mechanical and Civil Engineering, e-ISSN: 2278-1684, p-ISSN: 2320-334X, Volume 12, Issue 5 Ver. II, PP 34-47, 2015.
4. B.Durga Prakash, L.M.Gupta, P.D.Pachpor, and N.V.Deshpande, "Strengthening of steel beam around rectangular web openings", International Journal of Engineering Science and Technology (IJEST), ISSN: 0975-5462, Vol. 3 No. 2, 2011.
5. Redwood R & Cho SH. Design of steel and composite beams with web openings. Journal of Constructional Steel Research, 1993.
6. K.F. Chung, C.H.Ko, and A.J. Wang, Design of steel and composite beams with web openings – Verification using finite element method, Steel and Composite Structures Vol. 5. No. 2-3, Pp. 203-233, 2005.
7. Akwasi M. A. "Behavior of wide flange beams with reinforced web openings" M.Sc. Thesis, Southern Illinois University Carbondale, 2012.
8. Clawson, R. M., and Darwin, D., " Tests of Composite Beams with Web Opening ", Journal of the Structural Division, ASCE, Vol. 108, No. 1, pp 145-162, 1982.
9. Hamoodi M. and Hadi W. " Test of Composite Beams with Web Openings", Engineering and technology Journal, V. 29, No.10, pp. 2073-2086, May 2011.
10. Fam A. , Macdougall C. and shaat A. "Upgrading Steel–Concrete Composite Girders and Repair of Damaged Steel Beams using Bonded CFRP Laminates" Thin-Walled Structures , No.47, pp. 1122-1135, 2009.
11. Bouazaouia L., Jurkiewicz B., Delmas Y., and Lia A., "Static Behavior of A Full-Scale Steel – Concrete Beam with Epoxy-Bonding Connection" Journal of Engineering Structures, 2008.
12. Prakash B. D., Gupta L. M., Pachpor P. D., and Deshpande N. V. "Strengthening of steel beam around rectangular web openings", International Journal of Engineering Science and Technology (IJEST) 2011, ISSN: 0975-5462, Vol.3 No.2:1130-1136.
13. M. B. Dawood and D. H. AL-Saffar, "Flexural Behavior of Steel Concrete Composite Beam with Web Openings and Strengthened by CFRP Laminates, International Conference on Computational Plasticity. Fundamentals and Applications, 2015.