

Original Research Article

Littoral Benthic Macroinvertebrates of the Martín García Island Nature Reserve (Upper Río de la Plata, Argentina): Their use for the evaluation of water quality

ABSTRACT

At Martín García Island—a Natural Reserve located at the confluence of the Paraná and Uruguay rivers—we used benthic-macroinvertebrate biotic indices to elucidate the structure and community parameters of the littoral benthos and their response to environmental variables and to evaluate the island's coastal-water quality. Seasonal campaigns were carried out (March/1995-March/1996) at eight sites of the island's littoral, selected according to the substrate characteristics (fine sands, sandy-silty, reedbed, and silty with great hydrophyte development). From the sites with a soft substrate, triplicate samples were extracted with a 225-cm² Ekman manual dredge. The relative abundances of 71 taxa were measured: Nematoda, Turbellaria, Oligochaeta (23 spp.), Mollusca (21 spp.), Crustacea (11 spp.), Insecta (12 families), and Tardigrada. Macroinvertebrate density: 15-58,800 ind.m⁻². Analysis of variance revealed significant differences between the average annual macroinvertebrate-population densities among the five sites ($F: 3.059; p<0.05$). Site 7 exhibited the highest density at $38,700\pm 19,000$ ind.m⁻². Community parameters: diversity (H' : 0.77-2.16 bits); equitability (J : 0.16-1.02), and species richness (S : 3-29). Canonical-correspondence analysis indicated the environmental variables experiencing the greatest fluctuation to be: dissolved-oxygen concentration, pH, temperature, and conductivity. The results of this analysis suggest that macroinvertebrate-species distribution involves the physicochemical conditions of the water. Of the correlation between species and environmental variables, 95.5% were distributed on the canonical-correspondence ordering diagram's Axis 1. Functional feeding groups: In all sites and seasons, the gathering collectors predominated, followed by the scrapers, filtering collectors, shredders, and predators. Macroinvertebrate Index of Pampean-Rivers: values generally ranged from weak to weak-to-very-weak to zero pollution.

Keywords: benthos, macroinvertebrates, water quality, Martín García Island.

1. INTRODUCTION

The Río de la Plata estuary—220 kilometers long, 35 to 230 kilometers wide, and a temperate microtidal system—contains a freshwater environment in the upper region where the Paraná and Uruguay rivers converge, with an average discharge of 20,000–25,000 m³.s⁻¹

Comment [U1]: I think the way you used the colon in this title is not suitable. It would be better writing it more directly, for example: «The use of littoral benthic macroinvertebrates of the Martín García Island Nature Reserve as indicators of water quality»

Formatted: Highlight

Formatted: Highlight

Formatted: Highlight

Comment [U2]: Which five? Do you mean eight?

Comment [U3]: 1.From zero to weak pollution
2.However, you also detected high level of pollution, what is an important finding and shouldn't be omitted from the abstract.

¹. The river's coasts border on both Uruguay and Argentina. This system is one of the major estuaries in South America and the first in terms of economic relevance and the magnitude of the human populations linked to its coasts (1).

The Martín García Island Multiple-use Reserve is located at the confluence of the Paraná and Uruguay rivers (the uppermost portion of the Río de la Plata) at 34° 11' S and 58° 15' W. The 1990s marked the beginning of studies on the biota of the Island that were particularly characterized by the contributions of (2) on tree and shrub trees; followed by investigations on vertebrates (3, 4, 5), aquatic invertebrates (6) molluscs, temnocephalic flatworms (7), and aquatic and semiaquatic insects (8) among others. Since 2000, studies on the invertebrate fauna have been intensified, both along the island's coast and in the interior ponds (9, 10, 11, 12, 13, 14, 15, 16, 17, 18, 19, 20, 21, 22, 23).

The aim of this work was to gather further information about the structure of the littoral benthos with respect to the community parameters along with their response to environmental variables and also to evaluate the water quality along the island's coast by using biotic indices based on the benthic macroinvertebrates.

2. MATERIAL AND METHODS

2.1. Description of the environment

This island (see fig.,1) consists in an outcropping of the crystalline basement, unevenly overlaid by ~~P~~Pleistocene and ~~H~~Holocene sediments (24, 25, 26). Ever since the island's declaration as a natural reserve in 1969, Martín García has been under the administration of the provincial agency for sustainable development of the province of ~~B~~Buenos ~~A~~Aires.

The littoral of the island exhibits a marked asymmetry, with the western and northern coasts receiving clayey silt sediments, which particles over time become initially deposited on the otherwise rocky substrate and then consolidated by marsh-vegetation growth. In contrast,

Comment [U4]: 3. Most information should be moved to material and methods.
4. The theoretical framework should be based on macroinvertebrates' ecology/water quality rather than the study area.
5. The introduction deeply cares conceptual background. Note the discrepancy between this section and the discussion section.

Comment [U5]: Geological eras always capitalized.

Comment [U6]: City names always capitalized

along the eastern and southern coasts, the rocky substrate has little silty sediment and instead is covered mainly by fine sands, with that deposit resulting in part from the action of strong winds from the southeast. This coastal functional asymmetry favors the differential distribution of vegetation. Thus, on the northern coasts (see site 7, figure 1) extensive grasslands and reedbeds have developed, containing approximately 16 hydrophyte species. The benthos farther along the west coast (see site 8, figure 1) is characterized by mixed sediments of sand and silt and lies in the vicinity of a dump, constituting a source of anthropic impact. To the south of the island is site 1, a sandy beach with the development of reedbeds of *Schoenoplectus californicus*. Site 2 is situated in the southeastern end along with site 3 (the water-intake area of the island). The substrate there is mainly rocky, whereas a little farther north, a small beach of clean sand (site 4) has developed along with pools at site 5 farther up the coast. To the north, extensive reedbeds of *S. californicus* are present at site 6.

2.2 The Sampling

Five seasonal campaigns were carried out from summer, autumn, winter, spring 1995 to summer 1996, at the eight sites along the island's coast (see Fig. 1), selected according to the characteristics of the substrate (fine sands, sandy-silty, reedbed, and silty with great development of hydrophytes). In sites with soft substrate (sand or silt), triplicate samples per site were extracted with an Ekman manual dredge (225 cm²) and then fixed with 10% (v/v) aqueous formaldehyde.

In Sites 3 and 5, the material was collected as flakes of 15 cm in diameter with a 0.14-mm mesh by the methodology of capture per unit of effort (at individuals/30 min/per person) to obtain the relative abundance of individuals per hour.

Comment [U7]: Reorganize the sequence of the sites (from 1 to 8). Consider putting these information on a table, and include the coordinate of each site.

Formatted: Superscript

Comment [U8]: Do you mean sieves? Nets? This sampling method is not clear

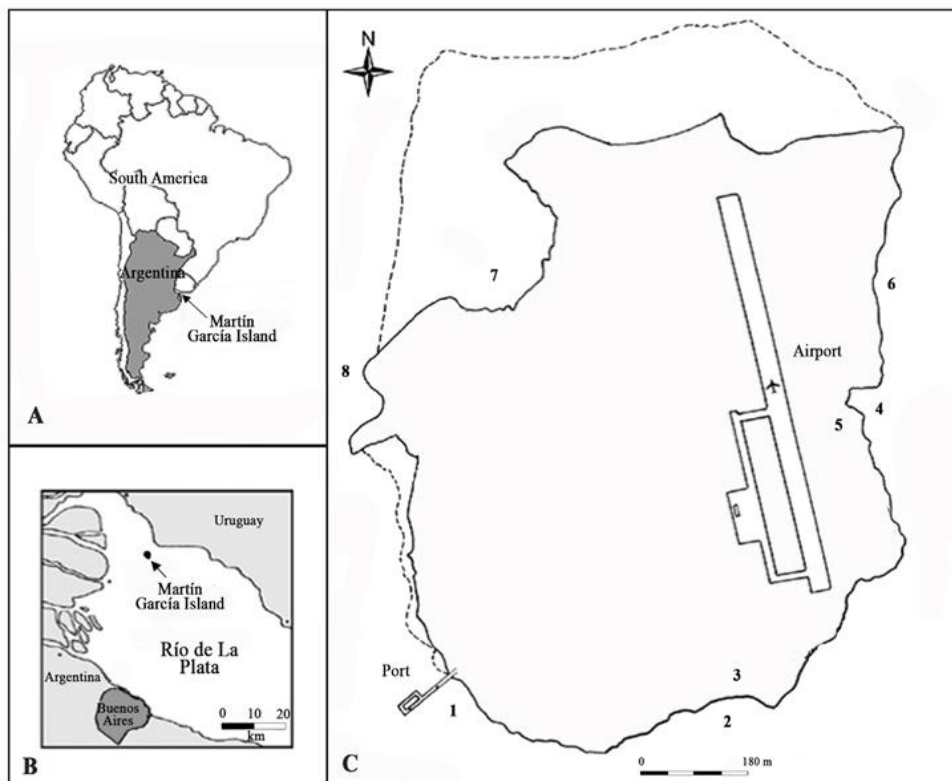


Fig. 1. Location of the Natural Reserve island of Martín García (Argentina) in a: South America b: the Estuary of Río de la Plata River. C: Map of the island showing study sites 1-8.

The following physicochemical variables were measured with portable digital sensors: water and air temperature ($^{\circ}\text{C}$), dissolved-oxygen concentration ($\text{mg}\cdot\text{l}^{-1}$), percent oxygen saturation, electrical conductivity ($\mu\text{s}\cdot\text{cm}^{-1}$), total concentration of dissolved solids ($\text{mg}\cdot\text{l}^{-1}$), and pH.

2.3. THE SAMPLES PROCESSING

In the laboratory, the samples were washed on a $125\text{-}\mu\text{m}$ mesh screen, or flotation techniques were applied (27) according to the type of substrate. The material was then stained with Erythrosin b. The specimens were characterized qualitatively and quantitatively

by microscopy and conventional scoring techniques. The taxonomical determinations were made through the use of the specialized literature pertaining to the particular groups (28, 29, 30, 31).

Comment [U9]: The authors identified the organisms to species, genus, family or order level. Please specify.

2.4. The Data Analyses

The species diversity (H') was calculated according to the Shannon-Wiener index, the species richness S (32), and the equitability (J) = $H'/\ln S$ (33). Graphs were constructed with the excel software to determine the relative abundance per sampling site and season of the year. The taxa included correspond to those that exceeded a 1% representation for the purpose of greater graphical clarity.

To ascertain the variation in the average annual density of the macroinvertebrates among the sampling sites, an Analysis of Variance (ANOVA) supplemented with a Bonferroni post-hoc test was performed ($p < 0.05$) by means of the statistical software SPSS v. 22. Data were previously log-transformed in order to meet the requirements of the analysis.

Comment [U10]: Not all sampling sites. Explain here which sites were included in this analysis and why only them.

For an analysis of the trophic structure of the benthos, the functional food-feeding groups were characterized in each sampling site and for the two years, according to preexisting classifications—namely, a grouping into: shredders, gathering collectors, filtering collectors, scrapers, and predators (34, 35, 36, 37, 38, 39).

Comment [U11]: It wasn't a two-year study

Because Martín García island had been classified as a Nature Reserve, we examined the water quality along the coast, applying the biotic index Macroinvertebrate Index of Pampean-Rivers (mipr) (40, 41, 42); based on the sum of the values of ecologic sensitivity (VX), varying from 0 to infinity with the lowest values corresponding to highly disturbed environments:

$$MIPR = \sum_{X=1}^N (VX)$$

$$X=1$$

Taxa

Sites

The relationships between species and environmental variables were examined by Canonical-Correspondence Analysis (CCA) (43, 44, 45, 46), with the statistical package MVSP 3.1 (47).

Of the 71 taxa found, only those being represented by more than 1% of the total invertebrates collected were considered (48) **along with the 15 most abundant and most frequent species** in conjunction with the corresponding **4 most relevant environmental variables**. ~~For the cca,~~ The average value of each environmental variable was used together with the abundance data of the species from the 8 sampling sites. A Pearson correlation analysis was performed and the significance values tested by the student t Test.

The associations between species and sites were examined by the grouping-analysis technique Unweighted Pair Group Method with Arithmetic Mean (UPGMA), through the application of the Jaccard index (49), with the species considered being the same as those used for the CCA.

3. RESULTS

3.1. RELATIVE ABUNDANCE

For estimating the relative abundance of the benthic macroinvertebrates present, a total of 71 taxa were collected (as shown in table 1 and fig. 2). At site 1 (see fig. 2, a), in the autumn 1995, the only taxa recorded were the gastropods and bivalves; with the highest abundances represented by *Heleobia piscium* (d'orbigny d'Orbigny), *Biomphalaria straminea* (dunker Dunker), *Hebetancylus moricandi* (d'orbigny d'Orbigny), *Uncancylus concentricus* (d'orbigny d'Orbigny), and *Corbicula fluminea* (müller Müller).

Table 1. List of the benthic taxa (presence-absence) of the Reserva Natural Isla Martín García during the studied period.

Formatted: Font color: Black, Spanish (Spain, International Sort)

Formatted: Font color: Black, Spanish (Spain, International Sort)

Formatted: Space After: 0 pt

Comment [U12]: I presume that all abundant and frequent taxa had more than 1% of relative abundance. In this case, you should only say «only those being represented by more than 1% of the total invertebrates collected were considered (XX)»

Comment [U13]: What did the authors consider «relevant environmental variables»?

Formatted: Font: 10 pt

Comment [U14]: Why did use this analysis? CCA was enough to demonstrate the association of spp with abiotic variables.

Comment [U15]: Descriptor names always capitalized!

	1	2	3	4	5	6	7	8
Nematoda	x	x	x	x	x	x	x	x
Turbelaria	x			x			x	
Annelida								
Hirudinea	x					x	x	
Oligochaeta								
<i>Pristina rosea</i>	x			x		x	x	x
<i>P. breviseta</i>							x	x
<i>P. osborni</i>				x		x	x	x
<i>P. longiseta</i>				x			x	x
<i>P. aequiseta</i>						x	x	
<i>P. acuminata</i>				x			x	
<i>Amphichaeta leydigi</i>	x			x		x	x	x
<i>Eiseniella tetraedra</i>						x	x	x
<i>Nais variabilis</i>	x					x	x	x
<i>Slavina evlinae</i>	x						x	
<i>Stephensoniana trivandrana</i>	x					x	x	x
<i>Aulophorus furcatus</i>							x	
<i>Dero obtusa</i>							x	
<i>D. sawayai</i>							x	
<i>Chaetogaster diastrophus</i>				x		x	x	x
<i>C. diaphanus</i>							x	x
<i>Stylaria lacustris</i>							x	x
<i>Narapa bonettoi</i>	x			x		x		
<i>Limnodrilus hoffmeisteri</i>	x			x		x	x	x
<i>L. udekemianus</i>	x						x	x

Formatted: Font color: Black, Spanish (Spain, International Sort)

Formatted: Font color: Black, Spanish (Spain, International Sort)

Formatted: Font color: Black, Spanish (Spain, International Sort)

Formatted: Font color: Black, Spanish (Spain, International Sort)

Formatted: Font color: Black, Spanish (Spain, International Sort)

Comment [U16]: Species names must be differentiated from the general text. I recommend you to maintain species names in italic and change classes/orders/families names to normal form.

<i>Aulodrilus pigueti</i>	x					x	x	x
<i>Aelosomatidae</i>	x			x		x	x	x
<i>Enchytraeidae</i>	x			x		x	x	x
Mollusca								
<i>Pisidium sterkianum</i>		x			x		x	
<i>P. taraguyense</i>			x					
<i>Limnoperna fortunei</i>		x			x	x	x	
<i>Corbicula fluminea</i>	x	x	x	x	x	x	x	x
<i>Heleobia parchapii</i>	x	x	x		x	x	x	x
<i>H. piscium</i>	x				x	x	x	
<i>Uncancylus concentricus</i>	x		x	x		x	x	
<i>Hebetancylus moricandi</i>	x	x	x	x	x	x	x	
<i>Potamolithus bushii</i>	x	x	x	x	x	x		
<i>P. lapidum</i>		x	x		x			
<i>P. agapetus</i>		x	x		x			
<i>Pomacea canaliculata</i>		x	x		x		x	x
<i>P. megastoma</i>								x
<i>Asolene platae</i>	x	x	x		x	x	x	x
<i>Biomphalaria straminea</i>			x		x		x	
<i>Drepanotrema kermatoides</i>					x		x	
<i>D. depressisimun</i>					x			
<i>Chilina fluminea</i>		x			x	x		
<i>Ch. megastoma</i>			x					
<i>Ch. rushi</i>			x					
<i>Stenophysa marmorata</i>			x					
Tardigrada	x	x				x	x	x

Formatted: Font color: Black, Spanish (Spain, International Sort), Not All caps

Formatted: Font color: Black, Spanish (Spain, International Sort)

Ostracoda									Formatted: Font color: Black, Spanish (Spain, International Sort)
<i>Cytheridella argentinensis</i>		x		x		x	x	x	
<i>Limnocytere paranensis</i>	x	x		x	x			x	
<i>Darwinula stevensoni</i>	x			x		x	x	x	
<i>Iliocypris gibba</i>	x			x		x	x	x	
<i>Cypridopsis vidua</i>						x			
Isopoda									Formatted: Font color: Black, Spanish (Spain, International Sort)
<i>Pseudophaeroma platense</i>	x	x	x	x	x	x		x	
Peracarida									Formatted: Font color: Black, Spanish (Spain, International Sort)
<i>Claudicuma platensis</i>	x	x		x					
<i>Sinelobus stanfordi</i>	x			x		x	x	x	
Amphipoda									Formatted: Font color: Black, Spanish (Spain, International Sort)
<i>Hyalella curvispina</i>		x	x			x	x	x	
Decapoda									Formatted: Font color: Black, Spanish (Spain, International Sort)
<i>Aegla uruguayana</i>				x		x			
<i>A. platensis</i>		x		x					
Diptera									Formatted: Font color: Black, Spanish (Spain, International Sort)
Chironomidae	x	x		x	x	x	x	x	
Ceratopogonidae	x	x				x	x	x	
Culicidae		x	x					x	
Coleoptera									Formatted: Font color: Black, Spanish (Spain, International Sort)
Psephaenidae		x	x	x	x	x			
Elmidae		x	x					x	
Ephemeroptera									Formatted: Font color: Black, Spanish (Spain, International Sort)
Baetidae		x	x		x	x		x	
Leptophlebiidae		x				x			

Hemiptera								
<i>Pleidae</i>		x					x	x
Odonata								
<i>Coenagrionidae</i>			x		x			x
<i>Protoneuridae</i>			x		x			
<i>Libellulidae</i>							x	
Trichoptera								
<i>Hydroptilidae</i>			x				x	

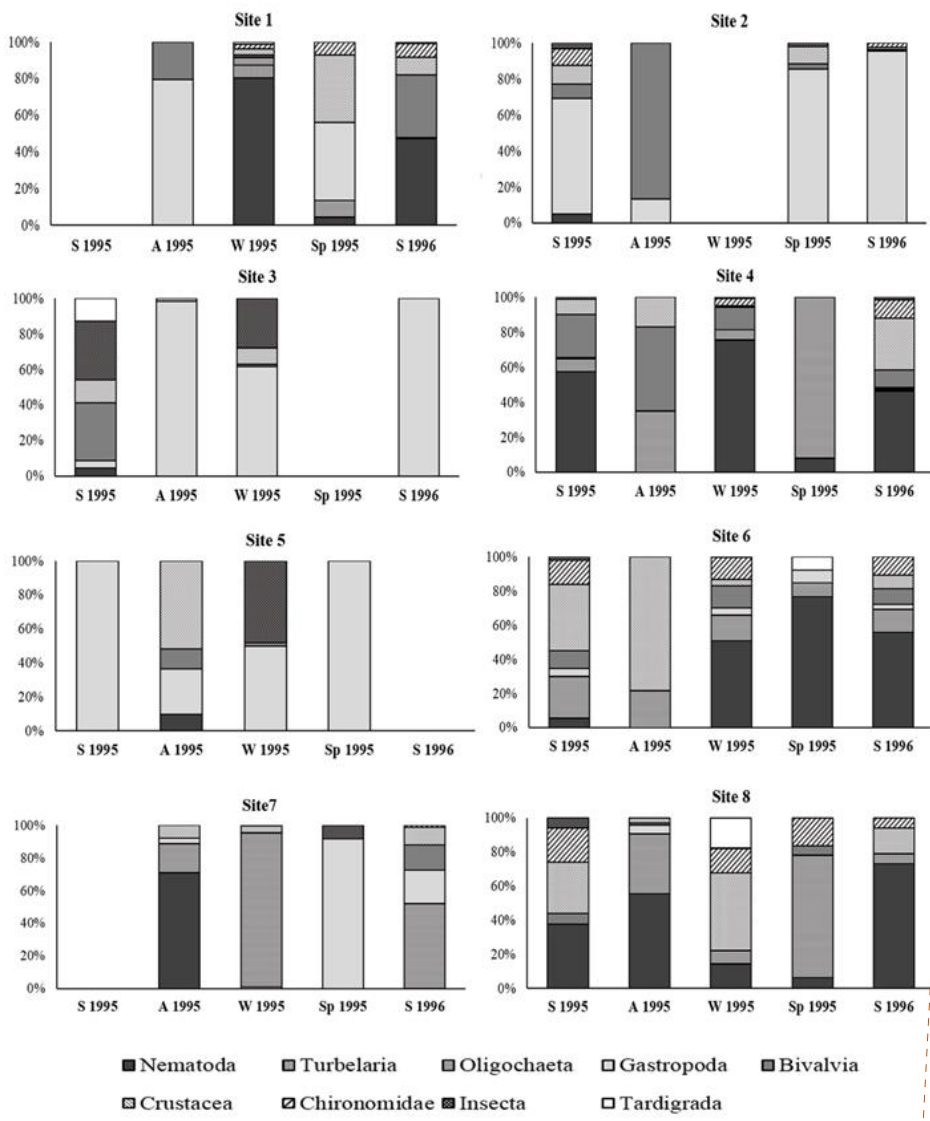
Formatted: Font color: Black, Spanish (Spain, International Sort)

Formatted: Font color: Black, Spanish (Spain, International Sort)

Formatted: Font color: Black, Spanish (Spain, International Sort)

During the winter 1995, the ~~nematoda~~ Nematoda predominated with lower relative abundances of Turbellaria and Oligochaeta, the last of these represented by the family Enchytraeidae plus a further 4 species among which *Limnodrilus hoffmeisteri* Claparède of the Tubificidae was the most abundant. The bivalves were represented by *C. fluminea*; and *Sinelobus stanfordi* (Richardson) was the most abundant crustacean, along with certain members of the phylum Tardigrada in addition to larvae of the Diptera Chironomidae. In spring of 1995, in addition to the benthos sampling, the reeds were surveyed by means of the capture-per-unit-of-effort technique. Of the benthic macroinvertebrates, the highest relative abundance corresponded to the crustaceans, the copepods, and the ostracod *Darwinula stevensoni* (Brady & Robertson) followed by the ~~Chironomidae~~ and *Narapa bonettoi* Righi and Varela (Oligochaeta). The Nematoda and the ostracods exhibited essentially the same abundance, while the harpacticoid and calanoid copepods likewise manifested similar abundances. The results of the capture per unit of effort demonstrated a clear predominance of gastropods such as *Potamolithus buschii* (Fraunfeld), *U. concentricus*, and *H. piscium*. For the summer 1996, the highest relative abundances corresponded to the Nematoda, the bivalve *C. fluminea*, and the Chironomidae.

At site 2 (as shown in fig. 2, b), in the summer 1995, the gastropods *Potamolithus agapetus* Pilsbry, *Potamolithus lapidum* (d'Orbigny), and Chironomidae –contributed the highest relative abundances. During the autumn, the bivalves *Limnoperna fortunei* (Dunke) and *C. fluminea* became prominent in addition to the gastropods *B. straminea* and *Chilina megastoma* Hylton Scott. In the spring of that year, the gastropods *P. agapetus* and *P. buschii* manifested the highest relative abundances followed by the isopod *Pseudosphaeroma platense* (Giambiagi). The summer 1996 was characterized by the presence of gastropods at the greatest relative abundance, particularly *P. buschii*, *P. agapetus*, and *H. moricandi*.



Comment [U17]: 1. Some colors are quite similar (Turbellaria and Oligochaeta; Gastropoda and Crustacea), so it is very hard to track. Consider using more patterns.
 2. Double «L» in Turbellaria
 3. The authors should synthesise the text relative to this figure. It is too much detailed and extensive. Try to highlight only the important findings.

Fig. 2. Temporal changes in abundance of the most relevant taxa recorded at the sampling sites during the study.

At Site 3 (see Fig. 2, C) in the summer 1995, *C. fluminea* was the species of greatest

relative abundance, followed by *P. platense* and the insects represented by the Coleoptera Psephenidae and Elmidae. In the fall, 1995 a predominance of gastropods (96%) featured *Drepanotrema depressissimum* (Moricand) as the species of highest abundance followed by *Stenophysa marmorata* (Guilding) and *Pomacea canaliculata* (Lamarck). In the winter 1995, gastropods, and particularly to *Heleobia parchapii*, manifested the highest relative abundance along with the insects, especially represented by the predominance of the Psephaenidae. The other species of gastropods were *B. straminea* and *Chilina rushi* Pilsbry along with the amphipods *Hyalolella curvispina* Shoemaker and *S. marmorata* at similar densities. In the spring, no taxa were found. In the summer 1996, only the gastropods *P. agapetus*, *H. moricandi*, and *B. straminea* were recorded, and of these three the first exhibited the greatest relative abundance.

At Site 4 (as shown in Fig. 2, D), in the summer 1995, the highest abundances corresponded to the Nematoda, *C. fluminea* and immature oligochaetes of the Tubificidae. In autumn, the bivalve *C. fluminea* contributed the greatest relative abundance, followed by *N. bonettoi* and the ostracod *Limnocythere paranensis* Ferguson. During the winter, the Nematoda again predominated followed by *C. fluminea*, *N. bonettoi*, and the Chironomidae. In the spring, *N. bonettoi* predominated over a background of lower-abundance groups. Whereas, in the summer 1996, the macroinvertebrates with high relative abundances were the Nematoda, harpacticoid copepods, and Chironomidae plus the bivalve *C. fluminea* and the ostracod *L. paranensis*.

At Site 5 (see Fig. 2, E), in the summer 1995, only gastropod molluscs were recorded with the highest relative abundance represented by *P. buschii* followed by *H. moricandi*, *B. straminea*, *P. canaliculata*, and *Drepanotrema kermatoides* (D'Orbigny). In the autumn, the crustacean copepods of the order Cyclopoida were dominant over the gastropods *H. piscium* and *C. fluminea*. In the winter, the Coleoptera Psephenidae along with the gastropods *P. buschii* and *P. agapetus* exhibited a greater relative abundance, with those latter species being present at comparable relative densities. In the spring, only the gastropods were

registered, with *H. parchapii* and *H. piscium* having the highest abundances. No records were obtained during the summer of 1996.

At Site 6 (see Fig. 2, F), in the summer 1995, the tanaids *S. stanfordi*, the Chironomidae family, and the bivalve *C. fluminea* were the most abundant. In autumn, the greatest abundance was registered with the crustaceans *H. curvispina* and *S. stanfordi* followed by the Enchytraeidae oligochaetes. In winter, the Nematoda predominated followed by the family Chironomidae, *C. fluminea*, and *Amphichaeta leydigi* Tauber. The spring was characterized by a clear predominance of the Nematoda; whereas *N. bonettoi*, *H. piscium*, and the species of Tardigrada present exhibited similar, though lesser abundances. For the summer 1996, the Nematoda manifested a still greater relative abundance followed by the Chironomidae, the oligochaete *Stephensoniana trivandrana* (Aiyer), and the bivalve *C. fluminea*.

At Site 7 (as shown in Fig. 2, G), in the fall 1995, the greatest relative abundance was registered with the Nematoda. During the winter, the oligochaetes *A. leydigi* and *N. variabilis* predominated. *H. parchapii* was the species that predominated, followed by the insects Pleidae. Whereas, in the summer 1996, *S. trivandrana* reached the highest relative abundance followed by *P. agapetus*, *L. fortunei*, *Dero sawayai* Marcus, the cyclopoid copepods, and *L. hoffmeisteri*.

At Site 8 (see Fig. 2, H), in the summer 1995, the Nematoda were distinguished by their high relative abundance, followed by the Chironomidae, Cyclopoida copepods, the ostracod *D. stevensoni*, and the isopod *P. platense*. In the fall, along with a notable abundance of *S. stanfordi* followed by the harpacticoid copepods and the oligochaetes *L. hoffmeisteri*, species of the Enchytraeidae, and *Nais variabilis* Pigué; ostracod species such as *D. stevensoni*, *C. argentinensis*, and *Iliocypris gibba* Brady & Norman contributed to the assemblage at a relative abundance of 10%. In the winter, the harpacticoid copepods exhibited the highest relative abundance followed by the Tardigrada, Nematoda, Chironomidae, Cladocera, and the ostracod *D. stevensoni*. In the spring, the species with

the highest relative abundances were *L. hoffmeisteri*, *Aulodrilus pigueti* Kowalewski, and those of the Chironomidae. Whereas, in the summer 1996, the Nematoda manifested the greatest relative abundance followed by the Chironomidae, the calanoid copepods and the cyclopoids.

For Sites 1 and 7 we have no records for the summer-1995 campaign because the sudden rise in the tide prevented any sampling. Furthermore, at Site 2 no organisms were registered during the winter of 1995.

3.2. Macroinvertebrates density

The density of the benthic macroinvertebrates ranged from 15 to 58,800 ind.m⁻². The ANOVA revealed significant differences between the values for the average annual population density (log₁₀ density) of macroinvertebrates among the five sites included in the analysis (F: 3.059; p < 0.05). The highest average population density was recorded at Site 8 (38,700 ± 19,000 ind.m⁻²) (Fig. 3).

Formatted: Superscript

Comment [U18]: I suppose that sites 3 and 5 were not included due to the different sampling method, but why excluding site 2? It is necessary to state this in M&M (data analysis)

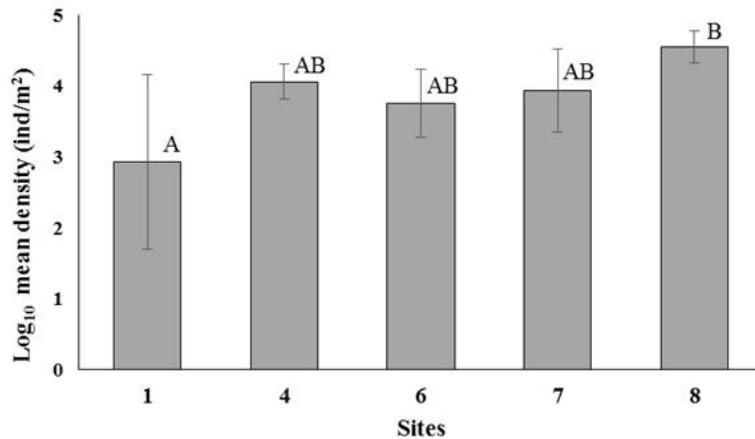


Fig. 3: Mean population density (log₁₀ density) of benthic invertebrates in five study sites of the natural reserve of Martín García island. Bars represent the mean values and lines

indicate standard deviation. Bars with at least one letter in common don't differ statistically ($p > 0.05$).

3.3. Community parameters

The community parameters (see table 2) of diversity (H'), equitability (J), and species richness (S) were minimum and maximum, respectively, for H' at 0.77 and 2.2 bits at sites 2/3 and 3 (summer 1996) and at 2.16 bits at site 8 (winter 1995); for J at 0.16 at site 4, (spring 1995) and 1.02 at site 2 (autumn 1995); and for (S) at 3 at site 3, (summer 1996) and 29 at site 7 (autumn 1995).

Comment [U19]: You already mentioned the maximum value (2.2. at site3)

		Sites							
Community parameters	Seasons*	1	2	3	4	5	6	7	8
Species richness	S-95	–	13	11	16	7	25	–	17
	A-95	5	6	9	8	15	12	29	25
	W-95	20	–	13	13	6	26	24	26
	Sp-95	15	7	–	9	7	5	10	9
	S-96	13	7	3	17	16	13	23	11
Diversity index	S-95	–	1.29	2.08	1.33	1.59	2.10	–	1.96
	A-95	1.44	1.83	1.49	1.26	1.82	1.56	1.53	1.47
	W-95	1.00	–	2.2	1.09	1.27	1.62	1.35	2.16
	Sp-95	1.95	1.14	–	0.35	1.29	1.13	0.92	1.76
	S-96	1.38	0.77	0.77	1.6	1.76	1.57	1.95	1.12
Evenness index	S-95	–	0.50	0.87	0.48	0.82	0.65	–	0.69
	A-95	0.90	1.02	0.68	0.61	0.67	0.63	0.46	0.46
	W-95	0.33	–	0.86	0.42	0.71	0.50	0.43	0.66
	Sp-95	0.72	0.59	–	0.16	0.66	0.70	0.40	0.80
	S-96	0.54	0.40	0.70	0.56	0.63	0.61	0.62	0.47

Table 2. Community parameters (species richness, S; diversity, H', and evenness, J') for the eight aquatic sampling sites on Martín García island, analyzed seasonally (summer 1995 through summer 1996); *s, summer; a, autumn; w, winter; sp, spring.

3.4. Cluster Analysis

The results of the UPGMA cluster analysis (as shown in Fig. 4) indicated the existence of two main groups of species. The first was composed of *P. agapetus*, *P. buschii*, *N. bonetoi*, the Chironomidae, *H. parchapii*, and *C. fluminea* at a J = 0.60 that combined with the second group containing *Cytheridella argentinensis* and *Chaetogaster diastrophus* along with *D. stevensoni*, *A. pigueti*, *S. trivandrana*, *N. variabilis*, *S. stanfordi*, *L. hoffmeisteri*, and *A. leydigi* at a maximum similarity index of J = 0.80.

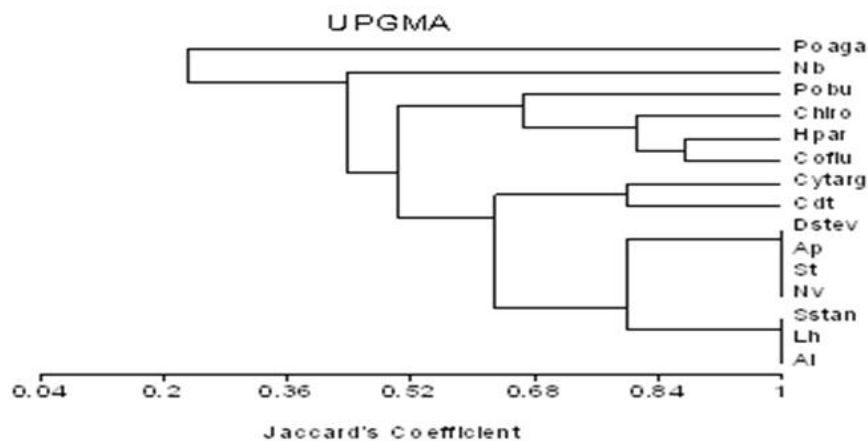


Fig. 4. Results of Cluster Analysis (UPGMA): Po aga, *P. agapetus*; N b, *N. bonettoi*; Po bu, *P. bushii*; Chiro, Chironomidae; H par, *H. parchapii*; Co flu, *C. fluminea*; Cyt arg; *C. argentinensis*; C dt, *C. diastrophus*; D stev, *D. stevensoni*; A p, *A. pigueti*; S t, *S. trivandrana*; N v, *N. variabilis*; S stan, *S. stanfordi*; L h, *L. hoffmeisteri*; A l, *A. leydigi*.

3.5. Average Aquatic Variables

During the study period, the average values for the environmental variables measured were: water temperature, 23.4 °C (SD = 9.08); dissolved-oxygen concentration 6.77 mg.L⁻¹ (SD = 2.93); conductivity 135 µS.cm⁻¹ (SD = 30.1), and pH 7.35 (SD = 1.33).

3.6. Canonical Correspondence Analysis Results

In the canonical-correspondence analysis (see Fig. 5, Table 3), the arrows in the figure represent the environmental variables and point to the maximum variation in the indicated parameter, with the length of each arrow being proportional to the magnitude of that variable in the ordering diagram. According to this analysis, the environmental variables that underwent the greatest fluctuation during the study period were the dissolved-oxygen concentration, the pH, the temperature, and the conductivity of the water. These results suggest that the distribution of the species is related to the physicochemical conditions of the water. Of the correlation between the species present and the environmental variables,

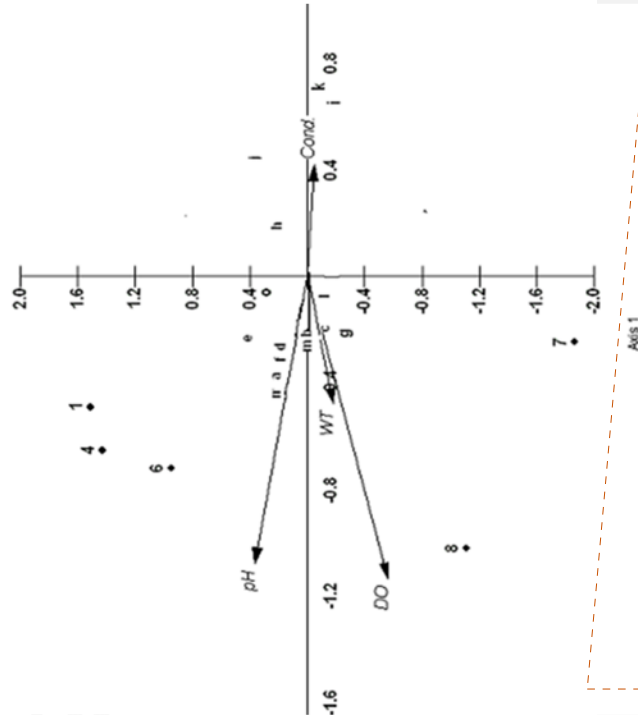
Comment [U20]: 1. These data are quite general. You should at least present the mean values for each sampling site, allowing comparison among them.
2. How about the variables: % of Oxygen Saturation and Concentration of Dissolved Solids? You mentioned them in M&M but did not present their values.

95.2% is distributed on Axis 1 of the ordering diagram (see Table 3, Fig. 5). The dissolved-oxygen concentration, the pH, and the temperature of the water correlated significantly with each other; but not with the electrical conductivity, which ~~parameter~~ became negatively related to these variables. The dissolved-oxygen concentration and the temperature were correlated with sites 4 and 2, respectively; whereas the pH became associated with sites 3 and 6 in the ordering diagram.

Comment [U21]: Axis 1 or axis 2? Positively or negatively? Describe better the CCA

	Axis 1	Axis 2	Axis 3
Eigenvalues	0.112	0.038	0.14
Percentage	41.716	14.343	5.074
Cum. Percentage	41.716	56.059	61.133
Cum. Constr. Percentage	66.501	89.366	97.454
Spec .env. Correlations	0.952	0.824	0.595

Table 3. Main Results from the Canonical correspondence analysis (CCA)



Comment [U22]: Rotate the figure.

Fig. 5. Canonical-correspondence-analysis diagram: 15 species, and 4 environmental variables. Abbreviations: a, *A. leydigi*; b, *N. variabilis*; c, *S. trivandrana*; d, *C. diastrophus*; e, *N. bonettoi*; f, *L. hoffmeisteri*; g, *A. pigueti*; h, *C. fluminea*; i, *H. parchappii*; j, *P. buschii*; k, *P. agapetus*; l, *C. argentensis*; m, *D. stvensoni*; n, *S. stanfordi*; o, Chironomidae. Sampling sites: 1–8

Table 4. Pearson correlations among four environmental variables, total number of species

(ns), and the fifteen most abundant taxa analyzed.

Comment [U23]: I don't think it brings additional information to your manuscript.

Variable	T °C	DO	Conductivity	pH	NS
SN	0.06	**0.71	-0.23	**0.65	1
Al	-0.13	**0.53	0.06	0.07	**0.65
Nv	-0.30	0.30	0.29	-0.17	**0.42
St	-0.28	*0.35	0.26	-0.14	**0.45
Cdt	-0.17	0.32	0.07	**0.41	**0.49
Nb	-0.05	0.11	**0.49	0.18	-0.03
Lh	-0.15	**0.48	0.13	0.00	**0.56
Ap	**0.69	**0.63	**0.42	**0.54	*0.34
Co flu	-0.23	0.23	0.31	0.18	0.20
H par	**0.45	-0.27	**0.61	**0.55	0.01
Po bu	**0.44	**0.48	0.08	-0.30	**0.47
Po aga	**0.57	-0.04	0.21	**0.44	-0.14
Cy targ	-0.11	*0.39	0.04	0.15	-0.02
D stev	**0.68	**0.64	**0.41	**0.54	*0.36
S stan	**0.45	**0.68	**0.56	**0.55	**0.56
Chiro	**0.45	**0.68	**0.61	**0.59	**0.49

T, temperature; Do, dissolved-oxygen concentration

The numbers indicating strong correlations (* $p < 0.05$, ** $p < 0.01$), where $n = 40$ for all variables. The abbreviations are the same as in the legend to Fig. 4.

3.6. Functional Feeding Groups

As to the functional feeding groups (see Fig. 6), at all the sites and in all the seasons of the two years; the gathering collectors predominated, followed by the scrapers, filtering collectors, shredders, and predators.

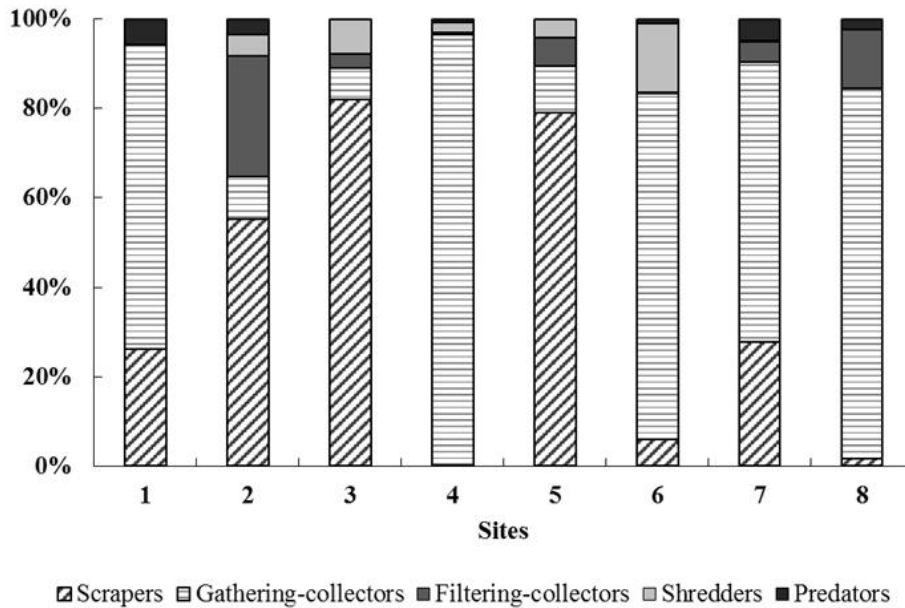


FIG. 6. Functional feeding groups of the benthic community.

3.7. Macroinvertebrate Index of Pampean-Rivers (MIPR)

Calculations of the MIPRS (see Fig. 7) at 6 of the 8 sampling sites—with sites 2 and 3 and sites 3 and 4 being combined because of their proximity and intermixing during high tides—gave maximum and minimum values of 19.2 (i. e., a very low degree of pollution to none at all) and 1.90 (i. e., a strong contamination). Site 1 exhibited a moderate level of contamination (at 3.00) in the winter 1996 and a considerably lower degree in the following autumn (at 8.25) along with somewhat higher levels (5.85 and 7.00) in the spring and early summer of that year. Site 3 manifested an extremely low pollution to none at all at 16.1 (summer 1995), a modest degree in autumn and winter at 8.80 and 9.30, respectively, and a considerably higher level at 4.40 and 5.20 in autumn and winter, respectively; whereas, in the spring and summer 1996, similarly high respective degrees of pollution were

Comment [U24]: This should be presented in Material and Methods

recorded at 4.40 and 5.20. At site 4, the contamination was extremely low to none at all at from 13.8 to 19.2) in summer and autumn 1995, modest in the winter and summer 1996 (at 8.20 and 9.30, respectively), and higher in the spring of that year (6.60). The contamination at site 6 was only very slight at 12.4 in the summer 1995, somewhat greater at 6.10 in autumn of that year, once again quite low at 10.9 in the winter, high (2.10) in the spring, and finally much lower at 5.75 in the summer 1996. Site 7 was usually substantially free of contamination at values between 8.25 and 11, while site 8 exhibited comparable levels in the summer 1995 at 7.80 along with progressively lower degrees at 8.15 in the following autumn and 11.1 in the winter, though manifesting a high value of contamination (2,4 and 1,5) in the spring of that year.

UNDER PEER REVIEW

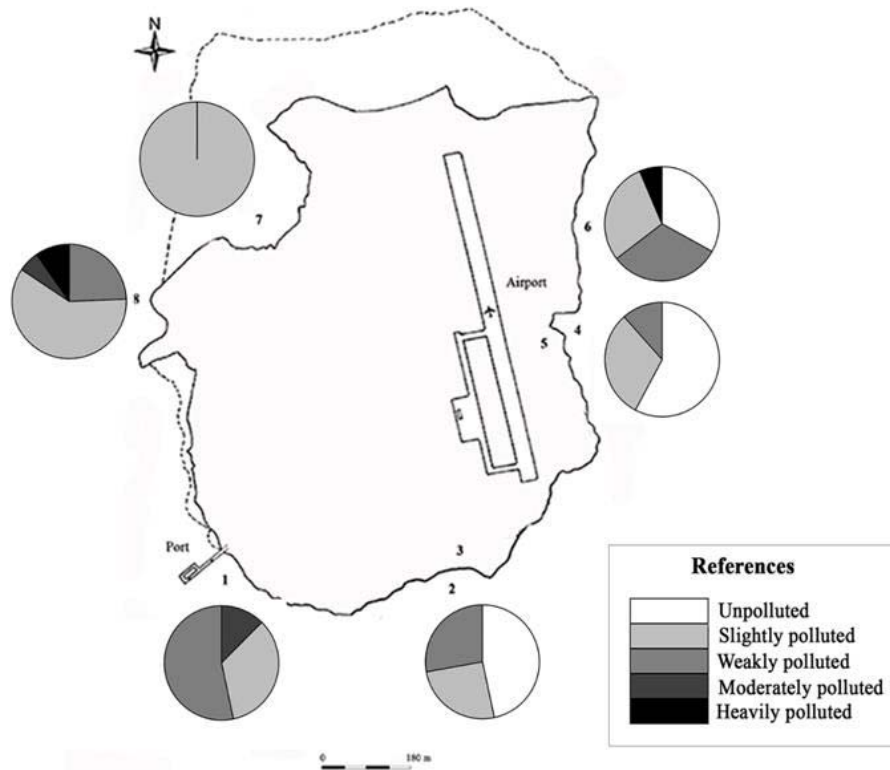


Fig. 7. Percent representation of each category established by the **Macroinvertebrate** INDEX of Pampean Rivers (MIPR) for the sampling sites during the study period. Sites 2 and 3 and sites 3 and 4 are represented in single pie charts because of their proximity and intermixing during high tides.

4. DISCUSSION.

In the Martín García Island Nature Reserve, the most abundant and representative macroinvertebrates in the littoral sites and seasons were the Nematoda, the oligochaete annelids, and the gastropods and bivalves among the Mollusca. The Nematoda evidenced a conspicuous representation at sites 1, 4, and 6 through 8 (see Table 1) and were found

Comment [U25]: The discussion section should be re-elaborated. Most of the text describe the results found (what should be presented only at previous section).

mainly in summer, autumn, and winter.

Comment [U26]: These are results, not discussion.

The Oligochaeta constitute an abundant group within the benthic organisms because the hydrosedimentologic dynamics of this and other great rivers create a wide heterogeneity of habitats as reflected in the spatial and temporal structure of the benthic communities (49, 47). This subclass has been recorded in almost all freshwater environments and is particularly abundant in the Paraná-Plata basin (51, 52, 53, 54, 55, 56, 57).

In the littoral of this Nature Reserve, these annelids were represented by 21 species in addition to the families Aelosomatidae and Enchytraeidae at sites 4 and 6 through 8 (Table 1 and Fig. 2); of the total taxa 19 species, Aelosomatidae and Enchytraeidae were present at Site 7 during the autumn and winter 1995 and the summer 1996. This Site is characterized by a great development of grasslands, reeds, and a total of 16 species of hydrophytes (2). At Site 8—it containing a major development of reedbeds associated with mixed sediments of sand and silt—14 species of oligochaetes and the families Aelosomatidae and Enchytraeidae were recorded.

The oligochaete abundances were higher in autumn and winter 1995. Moreover, as has also been observed in areas of the Paraná River, *N. bonettoi* was linked to sandy sediments (58, 49, 56, 59); and particularly at Site 4—that area characterized by medium and fine sands free of vegetation (9)—the species reached a relative abundance of 35% in the autumn as well as one of 98% in the spring of that year. In studies conducted by Ambrosio (39) covering a sector of the southern coastal strip along the Argentine side of the Río de la Plata estuary, all the species mentioned for the Martín García Island were registered; and their findings along the coast confirmed that the majority of oligochaete species is linked to areas with vegetation, such as was found at the present sites 7 and 8.

Comment [U27]: results

The portion of the Río de la Plata estuary included in the Brazilian subregion (60) has been found to exhibit one of the highest species-richness values of Gastropoda (31) (61). The mollusks on the Martín García Island (Table 1, Fig. 2)—represented by 21 species, 4 of the Bivalvia and 17 of the Gastropoda, that were found at all the sampling sites and in all the

seasons—along with the oligochaetes, constituted the most abundant and diverse of the macroinvertebrate groups registered in the present survey. Ambrosio (39) had cited 10 species of gastropods linked to soft sediments and vegetation plus 4 species of bivalves along the coast. On the island, in the present work, species of the families Chilinidae and Lithoglyphidae were also registered adhering to the rocky substrate.

Comment [U28]: Results

The Tardigrada were found at sites 1, 2, and 6 through 8; though always in low percentages except for Site 8 in the winter of 1995 (then at 17%). In addition to the Copepoda Cyclopoida, Calanoida, Harpacticoida, and Cladocera, eleven crustacean species were recorded at all sites and in all the seasons (see Table 1, Fig. 2); manifesting the highest abundances at sites 4, 5, and 6 through 8. Especially abundant at Site 6 was *S. stanfordi* (at 42% in the summer of 1995 and 30% in the autumn, though only 3% in the winter, which species was linked to the sediment and the presence of reeds, as mentioned by (39) for the Argentine coast.

Comment [U29]: results

The crustacean *Claudicuma platensis* (Cumacea) was recorded at only Sites 1, 2, and 4 and always at abundances less than 1%. Five species of Ostracoda were registered at Sites 1, 2, and 4 through 8 in 1995: *C. argentinensis* (4%) at Site 4 and *D. stevensoni* (13%) and *I. gibba* (1%) at Site 8 in summer along with *L. paranensis* (14%) at Site 4 and *D. stevensoni* (2%) at sites 7 and 8 in autumn. Members of the Ciprididae and Darwinulidae were recorded both in vegetated sites and at Site 4 having sandy sediments. *Pseudosphaeroma platense* exhibited a maximum relative abundance of 10% in spring 1995 at Site 1, there also in relation to the reedbed of that part of the island. The amphipod *H. curvispina* was recorded in both vegetated and nonvegetated sites. Among the decapod crustaceans, *A. uruguayana* was collected with a crab net at sites 4 and 6, while *A. platensis* was recorded at sites 2 and 4 along with members of the genus *Temnocephala*, commensals of that species (7).

Comment [U30]: results

Twelve families of insects belonging to 6 orders were identified (Table 1). The larvae of Chironomidae dipterans were recorded at all the sites except Site 3, with the highest relative abundance corresponding to the winter season at Sites 6 and 8, there in association

with mixed sediments and a vegetation of *S. californicus*. The coleopteroid family Psephenidae and the ephemeropteran family Baetidae manifested relatively higher distributions at those sampling sites. The families Coenagrionidae, Psephenidae, Baetidae, and Elmidae in combination were present at a relative abundance of 33% at Site 3 in summer 1995; the Pleidae and Ceratopogonidae together at one of 6% at Site 8 in that same summer; the Psephenidae at one of 26% at Site 3 and 48% at Site 5, both in the winter; and the Pleidae at one of 8% at Site 7 in the spring. The remaining families were at relative abundances lower than those cited. All of these families of insects have been observed on the island, had been cited on the sector of the coast studied by (39), except for the Psephenidae, whose larvae inhabit littoral rocks.

Comment [U31]: results

With regard to species richness, 20 were registered at Site 1 in the winter and 22 at Site 2 in the summer 1995. Although sites 3 through 5 contained lower numbers, sites 6 through 8 exhibited a greater richness—especially in autumn, winter, and spring. These sites offered a greater refuge for the development of benthic macroinvertebrates because of the presence of mixed sediments (silt plus sand) and an abundant development of hydrophytes. The diversity—as in other southern-coastal-strip sectors of the Río de la Plata—was higher wherever a greater differentiation of habitats occurred in association with marsh vegetation (22). In contrast, the equitability varied in accordance with the climatic conditions and seasons.

Comment [U32]: results

Within the functional feeding groups (Fig. 5), the macroinvertebrate gathering collectors were represented in the benthos of the island's littoral by the oligochaete, nematode, crustacean and insects taxa. With the last two of these groups exemplified by the harpacticoid copepods, ostracods, *C. platensis*, the amphipod *H. curvispina*, and the tanaidacean *S. stanfordi*; among the insects, the Elmidae family of the order Coleoptera plus certain Chironomidae of the Diptera, the Hydroptilidae of the Trichoptera, and Baetidae of the Ephemeroptera were present. This feeding category characterized more than 80% of the macroinvertebrates at sites 1, 4, and 6 through 8 in almost all the seasons,

an observation that had been made previously for different lotic environments of the Paraná-River basin (49, 62, 63,). Ambrosio (39) reported for the coast of Punta Lara and La Balandra within the southern coastal strip, dominances of such gathering collectors at higher than 80% in sediment-free vegetation. On the Martín García Island, this situation occurs in both the free sediments (e. g., at Site 4) and the vegetated ones (e. g., at sites 1 and 6 through 8).

The scrapers, represented principally by gastropod mollusks, were found in a large percentage at sites with rocky substrates such as Site 2 (68–97%), Site 3 (77–100%), and Site 5 (52–99%). Sites 1 and 7 (those vegetated) had respective abundances of 55 and 82% during most of the seasons. Pavé & Marchese (62) had reported very few macroinvertebrates belonging to this functional-feeding category in the environments of their study on the Paraná River. The investigations of (39), whose results coincided with those the previous authors cited for that sector of the Argentine coast of the Rio de la Plata, reported a scraper representation of 14%.

The filtering collectors were represented by the bivalve molluscs such as *L. fortunei*, *P. taraguyense*, and *P. sterkianum* along with certain cyclopoid and cladoceran copepods. The highest representations of filtering collectors were recorded at Site 2 at 67% (e. g., *L. fortunei*, autumn 1995), Site 7 at 15% (e. g., *L. fortunei*, *P. sterkianum*, and cyclopoids; summer 1996), Site 8 at 15% (e. g., cladocerans, winter 1995), and Site 5 at 13% (e. g., cladocerans and *P. sterkianum*, spring 1995). The filtering collectors were not registered at Site 1 and in the remainder were present at only low percentages. These overall percentages were similar to those reported by (63) and (39) for sites with the best water quality.

In the shredder category, the decapods *Aegla platensis* and *Aegla uruguayana* were recorded at sites 2 and 4 and at sites 4 and 6, respectively, in the summer, autumn, and winter. The predators, in contrast were characterized by low percentages (at a maximum of 15%) at sites 1, 2, 3, and 6 through 8—represented by turbelaries, hirudineans, *Hellobdella*

Comment [U33]: results

Comment [U34]: results

sp., oligochaetes such as *Chaetogaster diastrophus* and *C. diaphanus*, isopods such as *P. platense*, Ceratopogonidae dipterons, hemipterans, Pleidae, odonates, Coenagrionidae, and Libellulidae. Ambrosio (39) had reported similar values for those same coastal sampling sites.

Comment [U35]: results

The results of the UPGMA cluster analysis would appear to indicate that the coastal macroinvertebrate species of Martín García Island formed two main groups. Group 1—containing *P. agapetus*, *P. buschii*, *H. parchapii*, *N. bonetoi*, *C. fluminea*, and the Chironomidae—links those two species of *Potamolithus* to sites with rocky substrates (sites 2, 3, and 5) along with individual vegetated habitats—i. e., Site 7 for *P. agapetus* and Site 1 for *P. buschii*. *Heleobia parchapii* was registered in all but 4 sites and the Chironomidae in all sites except Site 3; while *C. fluminea* was common to all the sites as an infaunal bivalve, the distribution of which is closely related to abiotic parameters such as the type of substrate (64). At a $J = 0.60$, all of these taxa are linked to the second group containing the ostracod *C. argentinensis* at sites 2, 4, and 6 through 8 plus the annelid *C. diastrophus* at sites 4 and 6 through 8 along with the rest of the species cited in the Results section that combine as a cluster with an index of maximum similarity (i. e., $J = 0.80$).

Comment [U36]: results

With respect to the behavior of the species in the face of environmental variables, of the 15 species considered in this analysis, the majority were ordered close to the average dissolved-oxygen concentration, pH, and temperature; with *C. argentinensis*, the species located closest to the centroid of the diagram (as shown in Fig. 5), evidencing preferences for the mean values of the variables under consideration. *Darwinula stevensoni* (see Table 4) had a highly significant positive correlation ($p < 0.01$) with the temperature, dissolved-oxygen concentration, and pH along with a negative association with the electrical conductivity. *Sinelobus stanfordi* (Tanaidacea) was sequestered like *D. stevensoni*. Of the Oligochaeta, *A. leydigi* exhibited a highly significant association with the dissolved-oxygen concentration; whereas, *S. trivandana* also maintained a significant correlation with that parameter (see Table 4) ($p < 0.05$); *C. diastrophus* was associated with the pH ($p < 0.01$), and

Comment [U37]: results

Comment [U38]: result

N. bonettoi with the conductivity ($p < 0.01$); *L. hoffmeisteri* was correlated with only the dissolved-oxygen concentration ($r = 0.48$); and *A. pigueti* was highly positively associated with the temperature, dissolved-oxygen concentration, and pH—but negatively so with the conductivity.

Comment [U39]: results

Among the mollusks, *H. parchapii* was highly positively correlated with the conductivity, but negatively associated with the temperature and the pH (see Table 4). *Potamolithus buschii* evidenced highly significant negative correlations with the temperature and the dissolved-oxygen concentration as did *P. agapetus* with the temperature and the pH. The Chironomidae family maintained high positive associations with the temperature, dissolved-oxygen concentration, and pH, but was negatively correlated with the conductivity. The species richness, in general, varied positively and to a high degree with the dissolved-oxygen concentration and the pH.

Comment [U40]: results

The temperatures of the system were quite variable over time, being directly linked to the seasonal variation and the hydrodynamics of the ecosystem; whereas the average conductivity value in the littoral of the island of ca. $135 \mu\text{S}\cdot\text{cm}^{-1}$ was considerably lower than the average figure of $259 \mu\text{S}\cdot\text{cm}^{-1}$ reported for the water of the southern coastal strip. The guideline levels for quality as a function of the different uses of the island's resources, as indicated by the Use-IV range of parameters appropriate for the protection of the aquatic life indicated on the Water Quality meter of the (64), involve pHs of 6.5 to 8.5 and a dissolved-oxygen concentration of at least $5 \text{ mg}\cdot\text{L}^{-1}$. The work reported here has confirmed that the average values of the environmental variables recorded on the island are still within that recommended range.

Comment [U41]: result

Living organisms are widely used as biotic indicators for the monitoring and evaluation of water quality, with the benthic macroinvertebrates being the most frequently recommended for aquatic ecosystems (66, 67, 68, 63, 69, 70, 71). In Argentina, the benthic entomofauna have been used to evaluate the water quality of rivers and mountain streams by the application of the biotic indices Biological-Monitoring-Working-Party and Average-

Store-per-Taxon (72, 73, 74, 75, 76). In studies monitoring the ecologic quality of the Matanza-Riachuelo basin (Buenos-Aires province) indices involving the meso- and macroinvertebrates (40), the diversity (H'), and the deficit-of-species have been applied (77). Based on such observations, the MIPR was formulated specifically for the rivers of the Argentine pampas (40, 41). In the present study, we observed a variation in the quality and quantity of the meso- and macroinvertebrates, as evidenced upon application of that index, that reflected the effect of contamination in the system.

Along the littoral of Martín García Island, the MIPR values (see Fig. 7) fluctuated both among the sampling sites and during the seasons of the year: The highest values were observed in the summer and autumn 1995 at sites 2, 4, and 6 (very weak contamination down to none at all), with the value of Site 2 being particularly relevant since that area corresponds to the intake of water that flows directly to the water-treatment plant of the island supplying the resident population of the island (in years of the study, about 150 inhabitants) along with tourist contingencies that visit the island.

In general, we can state that the MIPR values ranged from only weak to weak-to-very-weak to zero pollution. Two exceptions, however, were registered at values reflecting strong contamination, both in the spring and at sites 6 (2.4) and 8 (1.9). At Site 6, this discrepancy could have resulted from the use of only 4 taxa with values of low ecologic sensitivity and a predominance of nematodes (at 77%). The explanation for Site 8 is similar to that of Site 6, but with the further aggravating circumstance of the site's proximity to the island's garbage dump, whose refuse could have entered the water during high tides. The results of (39) are quite similar to those calculated for the island although with values indicating higher pollution levels.

The work reported here constitutes the first investigation considering the use of macrobenthic invertebrates as indicators of water quality in the Martín García Island Nature Reserve. These findings can serve as the basis for additional investigations that, after a lapse of 23 years, are being carried out on the current state of the island's community and

Comment [U42]: result

Comment [U43]: results

the quality of the internal and coastal water. We trust that these observations and conclusions will be of assistance in the development of the appropriate environmental-management policies by the relevant enforcement authorities.

5. CONCLUSION

A total of 71 taxa were collected in the Martín García island Nature Reserve during the study period. The most abundant and representative macroinvertebrates in the littoral sites and seasons were the α Nematoda, the oligochaete annelids, and the gastropods and bivalves among the mollusca.

The density of the benthic macroinvertebrates ranged from 15 to 58,800 ind.m⁻². The ANOVA revealed significant differences between the values for the average annual population density of macroinvertebrates among the five sites included in the analysis (F: 3.059; p <0.05). The highest average population density was recorded at Site 8 (38,700 ± 19,000 ind.m⁻²).

The community parameters of diversity (H'), equitability (J), and species richness (S) were minimum and maximum, respectively, for H' at 0.77 and 2.2 bits at sites 2 and 3 (summer 1996) and at 2.16 bits at site 8 (winter 1995); for J at 0.16 at site 4, (spring 1995) and 1.02 at site 2 (autumn 1995); and for (S) at 3 at site 3, (summer 1996) and 29 at site 7 (autumn 1995).

The results of the UPGMA cluster analysis indicated the existence of two main groups of species.

According to CCA, the environmental variables that underwent the greatest fluctuation were the dissolved-oxygen concentration, the pH, the temperature, and the conductivity of the

Comment [U44]: Also repetition of results section. Synthesise your most important findings and the implication for future studies or conservational management

water. These results suggest that the distribution of the species is related to the physicochemical conditions of the water. Of the correlation between the species present and the environmental variables, 95.2% is distributed on Axis 1 of the ordering diagram.

As to the functional feeding groups, at all the sites and in all the seasons of the two years; the gathering collectors predominated, followed by the scrapers, filtering collectors, shredders, and predators.

UNDER PEER REVIEW

Along the littoral of the island, the MIPR values fluctuated both among the sampling sites and during the seasons of the year: the highest values were observed in the summer and autumn 1995 at sites 2, 4, and 6 (very weak contamination down to none at all), with the value of site 2 being particularly relevant since that area corresponds to the intake of water that flows directly to the water-treatment plant of the island supplying the resident population of the island. In general, we can state that the MIPR values ranged from only weak to weak-to-very-weak to zero pollution.

The work reported here constitutes the first investigation considering the use of macrobenthic invertebrates as indicators of water quality in the Martín García Island Nature Reserve.

ETHICAL APPROVAL (WHERE EVER APPLICABLE)

As per international standard written ethical permission has been collected and preserved by the authors.

REFERENCES

1. **1.** Urien CM. Río de la Plata Estuary Environments Mem Geol Soc. America 1972; 33: 213-234.
2. Lahitte HB, Hurrell JA Los Árboles de la Isla Martín García: Arborescentes and arborescentes (natural and naturalist) of the Reserva Natural and Cultural Isla Martín García. (La Plata: Comisión de Investigaciones Científicas); 1994. Spanish.
3. **3.** Juárez MC Reserva and categorization of the categorization of the Reserva Natural Isla Martín García, Río de Plata Superior. Neotrópica. 1995; 41 (105-106): 83-88.

Formatted: Highlight

Formatted: Highlight

4. **4.** Lahitte HB, Hurrell JA, Canda G, Trucco Alemán C. Poblaciones de Tupinambis Teguxin (Sauria-Teiidae) de la Isla Martín García (Buenos Aires, Argentina). I. Etnobiología y Encuadre Metodológico-Cognitivo Pinaco; 2: 45-62. 1995
5. **5.** Lahitte HB, Hurrell JJ. Catálogo de las Aves de la Isla Martín García (Buenos Aires, Argentina). Ed. La Plata, CIC. p. 53-69. (Serie informe, no. 53). 1998.
6. **6.** Rumi A, Martín SM, Tassara MP, Darrigran GA. Moluscos de agua dulce de la Reserva Natural e Histórica Isla Martín García Río de la Plata, Argentina Com. Soc. Malacol.Uruguay 1996; 8 (70-71): 7-12. Spanish
7. **7.** Damborenea MC, César II, Armendáriz LC. Especies de Temnocephala (Platyhelminthes: Temnocephalidae) de la Isla Martín García, Buenos Aires, Argentina Neotropica 1997; 43 (109-110): 123-124. Spanish
8. **8.** Fernández LOA, López Ruf M. Coleoptera and Heteroptera Acueticos and Semiconductor of Isla Martín García (Provincia de Buenos Aires). Physis Secc B. 1999; 57 (132-133): 1-4. Spanish
9. **9.** Armendáriz LC, César II, Damborenea MC. Oligoquetos en ambientes lenticos en la Reserva Natural e Historica de la Isla Martín García, Rio de la Plata Superior, Argentina. Asoc. Cs. Nat. Lit. 2000; 31 (1-2): 73-79. Spanish
10. **10.** Armendáriz LC, César II. The distribution and ecology of litoral Oligochaeta and Aphanoneura (Annelida) of the Natural and Historical Reserve of Isla Martín García, Río de la Plata River, Argentina. Hydrobiologia. 2001, 463: 207-216.
11. **11.** César II, Armendáriz LC, Damborenea C. Ostrácodos (Crustacea) de la Isla Martín García, Río de la Plata, Argentina. Nat. Neotropic. 2001; 32 (2): 147-151. Spanish
12. **12.** Rumi A, Gutiérrez Gregoric D, Roche A, Tassara MP. 2004. Population structure in Drepanotrema cimex and D. kermatoides (Gastropoda, Planorbidae) in natural conditions. Malacol Michigan, USA 2004; 45 (2): 453-458.

13. **13.** Martín SM, Negrete LH. Primer registrar *Heleobia guaranitica* (Doering, 1884) (Gastropoda: Cochliopidae) on Reserva Natural de Usos Múltiples Isla Martín García Com. Soc. Malacol Uruguay 2006; 9 (89): 71-73. Formatted: Highlight
14. **14.** César II, Liberto R. Ostracoda ¿Posibles Indicadores de Deterioro Ambiental de la Reserva de Usos Múltiples Isla Martín García? Rev. Ciencia 2008; 3 (5): 99-108. Spanish Formatted: Highlight
15. **15.** César II, Martín SM, Gullo BS, Liberto R. Biodiversity and Ecology of Hirudinea (Annelida) from the Natural Reserve of Isla Martín García, Río de la Plata, Argentina. Braz. J. Biol. 2009; 69 (4): 1107-1113. PMID: 19967181. <http://dx.doi.org/10.1590/S1519-69842009000500014> Formatted: Highlight
16. **16.** Martín SM. Individual growth *Heleobia piscium* in natural population (Gastropoda: Cochliopidae) from the Multiple Use Natural Reserve Isla Martín García, Buenos Aires, Argentina. Braz. J. Biol. 2008; 68 (3): 617-621. <http://dx.doi.org/10.1590/S1519-69842008000300020> PMID: 18833484. Formatted: Highlight
17. **17.** Martín SM, César II, Liberto R. Distribution of *Deroceras reticulatum* (Müller, 1774) (Pulmonata Stylommatophora) in Argentina with the first record of the Reserva de Usos, Isla Martín García, Río de la Plata superior. Formatted: Highlight
18. **18.** Díaz AC, Martín SM Population structure of *Uncancylus concentricus* (d'Orbigny, 1835) (Ancyliidae, Pulmonata, Basommatophora) in the Multiple Use Reserve Martín García Island, Upper Río de la Plata, Argentina. Braz. J. Biol. 2012; 72 (1): 1-6. Formatted: Highlight
19. **19.** Martín SM, Díaz AC. Histology and gametogenesis in *Heleobia piscium* (Cochliopidae) from the Multiple Use Reserve " Isla Martín García, " Buenos Aires, Argentina. Peerj DOI 10.7717 / peerj 2016; 2548: 1-11. Formatted: Highlight
20. **20.** Liberto R, Mesquita-Joanes F, César II. Dynamics of pleustonic ostracod populations in small ponds on the island of Martín García (Río de la Plata, Argentina). Hidrobiología 2012; 688: 47-61. Formatted: Highlight

21. **21.** Liberto R, César II, Mesquita-Joanes F. Postembryonic growth in two species of freshwater ostracoda (Crustacea) shows a size-age sigmoid model fit and temperature on development time, but no clear-temperature-rule rule (TSR) pattern . *Limnology* 2014; 15: 1-13. **Formatted: Highlight**
22. **22.** César II, Martín SM, Rumi A, Tassara MP. Mollusks (Gastropoda and Bivalvia) of the Multi-Use Reserve Martín García Island, Río de la Plata River: biodiversity and ecology. *Braz. J. Biol.* 2012; 72 (1): 1-10. <http://dx.doi.org/10.1590/S1519-69842012000100014> PMID: 22437379 **Formatted: Portuguese (Brazil), Highlight**
Formatted: Portuguese (Brazil)
23. **23.** César II. Annelida (Oligochaeta and Aphanoneura) from the Natural Reserve of Isla Martín García (Upper Río de la Plata estuary, Argentina): biodiversity and response to environmental variables. *Braz. J. Biol.* 2014; 74 (1): 128-136. DOI: <http://dx.doi.org/10.1590/1519-6984.21412> **Formatted: Highlight**
24. **24.** Dalla Salda L. El Basamento de la Isla Martín García Río de La Plata *Rev. Asoc. Geol Arg.* 1981; 26 (1): 29-43. Spanish **Formatted: Portuguese (Brazil), Highlight**
Formatted: Portuguese (Brazil)
25. **25.** Ravizza GB Principales of geologicos del Cuaternario en la Isla Martín García, Río de la Plata superior. *Rev. Asoc. Geol Arg. Bs. As.*1984; 39 (1-2): 125-130. Spanish **Formatted: Portuguese (Brazil), Highlight**
Formatted: Portuguese (Brazil)
26. **26.** González MA, Ravizza G. Sedimentos estuáricos del Pleistoceno tardío and Holoceno en la Isla Martín García, Río de la Plata. *Rev. Asoc.Geol. Arg.* 1987; 42 (3-4): 231-243. Spanish **Formatted: Portuguese (Brazil), Highlight**
Formatted: Portuguese (Brazil)
27. **27.** Anderson RO A modified flotation technique for sorting down fauna samples L & O. 1959; 4: 223-225. **Formatted: Highlight**
28. **28.** Brinkhurst RO, Marchese M. Guía para la identificación de oligoquetos acueticos continentales de Sud and Centroamérica. *Asoc. Cs. Nat. Lit. Col. Climax* 1992; 6. Seg. Ed. Santo Tomé (S.F.) Argentina. 207 pp. Spanish **Formatted: Portuguese (Brazil), Highlight**
Formatted: Portuguese (Brazil)
29. **29.** Christoffersen ML. A catalog of aquatic microdrile oligochaetes (Annelida: Clitellata) from South America. *Acta Hydrobiol Sin* 2007; 31, supplem .: 59-86. **Formatted: Highlight**

30. **30.** Christoffersen ML. Catalog of the Lumbricidae (Annelida, Clitellata, Lumbricoidea) from South America, with remarks on the systematics of the Lumbricina. *Zoosystema* 2011; 33 (2): 141-173. **Formatted: Highlight**
31. **31.** Lopretto E, Tell G (Directores). Ecosistemas de aguas continentales Metodologías para su estudio. ISBN 950-9715-31-X Tomo II, 709-731. Ediciones Sur (La Plata). 1995. Spanish. **Formatted: Portuguese (Brazil), Highlight**
Formatted: Portuguese (Brazil)
32. **32.** Margaleff R. Los organismos indicadores en Limnología. *Biología de las aguas continentales* Instituto Forestal de Investigaciones y Experiencias, Minister of Agriculture Madrid 1955. Spanish. **Formatted: Portuguese (Brazil), Highlight**
Formatted: Portuguese (Brazil)
33. **33.** Begon M, Harper JL, Townsend CR. *Ecología: Individuos, Poblaciones y Comunidades* Barcelona: Ed. Omega, S. A. 1988. Spanish. **Formatted: Highlight**
Formatted: Portuguese (Brazil)
34. **34.** Merritt RW, Cummins KW, Berg MB (editors). *An introduction to the aquatic insects of North America* 4a ed Kendall / Hunt Publishing Company 2008. **Formatted: Highlight**
35. **35.** Bonetto AA, Wais IR. Southern South American streams and rivers Cap 9. In: C.E. Cushing, K.W. Cummins & G.W. Minshall (eds.), *Elsevier Science B. V. Ecosystems of the World 22. River and streams Ecosystems: Amsterdam* 1995. **Formatted: Highlight**
36. **36.** Heino J, Soininen J, Lappalainen J, Virtanen R. The relationship between species richness and taxonomic distinctness in freshwater organisms. *Limnol. & Oceanog*, 2005; 50 (3): 978-986. **Formatted: Highlight**
37. **37.** Cummins KW, Merritt RW, Andrade PCN. The use of invertebrate functional groups to characterize ecosystem attributes in selected streams and rivers in south Brazil. *Stud Neotrop. Fauna Environ* 2005; 40 (1): 69-89. **Formatted: Highlight**
38. **38.** Tangorra M. *Colonización y descomposición especies vegetation en ligne en ligne de las ciento Trabajo de Tesis Doctoral Facultad de Ciencias Naturales y Museo Universidad Nacional de La Plata* 2004. 118 pp. Available in: <http://hdl.handle.net/10915/4488> Spanish **Formatted: Portuguese (Brazil), Highlight**
Formatted: Portuguese (Brazil)

39. **39.** Ambrosio ES. Hábitats and grocers of funcionales alimentario de los macroinvertebrados bentónicos en la Costa de la Costa de la Plata: relation with contamination. La Plata (Bs. As.): Facultad de Ciencias Naturales y Museo (UNLP), 164 p. 2014. Tesis de doctorado Available in: <http://sedici.unlp.edu.ar/> Spanish **Formatted: Portuguese (Brazil), Highlight**
Formatted: Portuguese (Brazil)
40. **40.** Rodrigues Capítulo A, Paggi AC, César II, Tassara M. Monitoreo de la calidad ecológica de la cuenca Matanza Riachuelo is a member of the group and Macroinvertebrados. In: Resúmenes II Congr. Argent de Limnología, Buenos Aires, 18-24 September 1997, p. 138. **Formatted: Portuguese (Brazil), Highlight**
Formatted: Portuguese (Brazil)
41. **41.** Rodrigues Capítulo A. Los macroinvertebrados como indicates the ambient air conditioning in the country. Rev. Soc. Entomol Arg.1999; 58: 208-217. Spanish **Formatted: Highlight**
42. **42.** Rodrigues Capítulo A, Tangorra M, OCÓN C. Use of Benthic macroinvertebrates to assess the biological status of Pampean streams in Argentina Aq. Ecolog 2001; 35: 109-119. Kluwer Academic Publishers Printed in the Netherlands **Formatted: Highlight**
43. **43.** Ter Braak CJF. Canonical Correspondence Analysis: A new eigenvector technique for multivariate direct gradient analysis. Ecology 1986; 67 (5): 1167-1179. **Formatted: Highlight**
44. **44.** Külköylüoğlu O. Ecology of freshwater Ostracoda (Crustacea) to Lakes and Reservoirs in Bolu, Turkey J. Fresh. Ecol. 2003; 18 (3): 343-347. **Formatted: Highlight**
45. **45.** Külköylüoğlu O, Dügel M. Ecology and spatiotemporal patterns of Ostracoda (Crustacea) to Lake Gölcük (Bolu, Turkey). Arch. für hydrobiol 2004; 160 (1): 67-83. **Formatted: Highlight**
46. **46.** Külköylüoğlu O. Ecology and phenology of freshwater ostracodes in Lake Gököy (Bolu, Turkey). Aq. Ecol. 2005; 39 (3): 295-304., **Formatted: Highlight**
- ~~47.~~ **47.** Kovack, W., 1998. Multi-Variate Statistics Package, Version 3.1. **Formatted: Highlight**
- ~~48.~~ **48.** Pentraeth **Formatted: Font: (Default) Arial, 10 pt**
49. **48.** Ezcurra de Drago I, Marchese M, Wantzen KM. Benthos of a large neotropical river: Spatial patterns in Benthic invertebrate community structure along the lower Paraguay floodplain system. Arch. für hydrobiol 2004. 160: 347-374. **Formatted: Highlight**

- 50-49. [49](#). Crisci JV, López Armengol MF. Introducción a la teoría and practica de la taxonomía numerica. Washington: OEA p. 132. (serie de biología, no.26). 1983. Spanish. **Formatted: Portuguese (Brazil), Highlight**
Formatted: Portuguese (Brazil)
- 51-50. [50](#). Marchese M, Ezcurra de Drago I. Benthos of the lotic environments in the Paraná River system: transverse zonation. Hydrobiologia 1992; 237: 1-13. **Formatted: Highlight**
- 52-51. [52](#). Rumi A, Gutiérrez Gregoric DE, Núñez V, César II, Roche MA, Tassara MP, Martín SM, López Armengol MF. Freshwater gastropod from Argentina: Species richness, distribution patterns, and an evaluation of endangered species. Malacologia 2006; 49 (1): 189-208. **Formatted: Portuguese (Brazil), Highlight**
Formatted: Portuguese (Brazil)
- 53-52. [53](#). Higyty J, TAKEDA AM. Spatial and temporal variation in densities of chironomid larvae (Diptera) in two lagoons and two tributaries of the Upper Paraná River Floodplain. Braz. J. Biol. 2002; 62 (4B): 807-818. **Formatted: Highlight**
<http://dx.doi.org/10.1590/S1519-69842002000500010>
- 54-53. [54](#). Pavé P, Marchese M. Invertebrados bentónicos como indicator de ríos urbanos (Paraná-Entre Ríos). Ecol. Austral 2005; 15: 185-197. **Formatted: Portuguese (Brazil), Highlight**
Formatted: Portuguese (Brazil)
- 55-54. [55](#). Da Silva Gama AM Distribuição e richancia dos moluscos bentônicos da lagoa do Araçá-RS, the funicular climate of ambience Dissertação de Mestrado, Porto Alegre-RS-Brasil, p. 1-35 2004. Portugues **Formatted: Portuguese (Brazil), Highlight**
Formatted: Portuguese (Brazil)
- 56-55. [56](#). Calidad de las Aguas de la Franja Costera Sur del Río de la Plata (San Fernando - Magdalena. 1A Ed. Ed. Ed.) Consejo Permanente for Monitore de la Fronzada Costera Sur del Río de Plata. 1997 Spanish **Formatted: Portuguese (Brazil), Highlight**
Formatted: Portuguese (Brazil)
- 57-56. [57](#). Rosenberg DM, Resh VH. Use of insects in biomonitoring Pages 8797 in: R.W. Merritt and K.W.Cummins, eds. An Introduction to the Aquatic Insects of North America 3rd ed. Kendall / Hunt, Dubuque, Iowa. 1996. **Formatted: Highlight**
- 58-57. [58](#). Figueroa R, Valdovinos C, Araya E, Parra O. Macroinvertebrados bentonnikos of the Calidad de Agua de Ríos del Sur Chile. Benthic macroinvertebrates as water quality Rev.Chi Hist. Nat. 2003; 76: 275-285. **Formatted: Portuguese (Brazil), Highlight**
Formatted: Portuguese (Brazil)

59-58. **59.** Guerrero-Bolaño F, Manjarrez-Hernández A, Núñez-Padilla N. Los macroinvertebrados bentónicos de Pozo Azul (cuenca del Río Gaira, Colombia) and have a good relationship with the community. *Acta Biológ Colomb* 2003; 8 (2): 43-55.

Formatted: Highlight

60-59. **60.** Giacometti JC, Bersosa F. Macroinvertebrados Acuáticos and other importers of Bioindicadores in Calidad el Aguilar in Alambi. *Bol Téc.* 2006; 6 (2) Ser. Zool.: 17-32.

Formatted: Highlight

61-60. **61.** Gonçalves Oliveira L, Da Conceição Bispo P, Custódio de Sá N. Ecologia de comunidades de insanto bentônicos (ephemeroptera, plecoptera e trichoptera), Emeralds of the Ecuadorian colonies Goiânia, Goiás, Brasil. *Braz. J. Biol.* 1997; 14 (4): 867-876.

Formatted: Portuguese (Brazil), Highlight

Formatted: Portuguese (Brazil)

62. Correa-Araneda F, Rivera R, Urritia J, De Los Ríos P, Contreras A, Encina-Montoya F. Efectos of una zona urbana la méroinvertebrados bentónicos of an ecosistema fluvial del sur Chile. *Limnetica* 2010; 29 (2): 183-194. Spanish

Formatted: Portuguese (Brazil)

63. Rodríguez Garay G. Entomofauna bentónica del arroyo los pinos (capayán, catamarca), con special referencing algebra: The variance of the estersional and its bioindicadores. Trabajo final de Licenciatura en Ciencias Biológicas. Facultad de Ciencias Exactas y Naturales U.N.C.A. 111 pp. 2007. Spanish.

64. Salas L. Biodiversity of Mountain Stream Benthonic Insects and Their Application to Test the Biological Quality of the Water *Biocell.* 2005; 29 (1): 85.

Formatted: Portuguese (Brazil)

65. Salas L. Biodiversidad de insectos bentónicos de Arroyo de Yungas de la Provincia de Catamarca. Tesis de Maestría en Entomología Inst. Sup. de Entomología "Dr. Abraham Willink", Fac. de Cs. Nat. e inst. Miguel Lillo UNT. 112 PP. 2007. Spanish.

66. Fernández HR., Romero F, Vete MB, Manzo V, Nieto C, Orce M. Evaluation of Tres índices Bióticos in a subtropical de Montana (Tucumán - Argentina). *Limnetica* 2002; 21 (1-2): 1-13. Spanish

67. Colla MF, César II, SALAS LB. Benthic insects of the El Tala River (Catamarca, Argentina): longitudinal variation of their structure and the use of insects to assess water

Formatted: Portuguese (Brazil)

quality. Braz. J. Biol. 2013; 73 (2): 357-366. <http://dx.doi.org/10.1590/S1519-69842013000200016>

68. Kothé P. Der "Artenfehlbetrag", einfaches Gütekriterium und seine Anwendung bei biologischen Vorfluteruntersuchungen. Dokumentt. Gewässer Mitt 1962; 6: 60-

UNDER PEER REVIEW