

Evaluation of genetic diversity by molecular markers ISSR of Algodoeiro *Gossypium mustelinum* native populations of Pernambuco Brazil.

ABSTRACT

In order to assure and evaluate the genetic diversity, wild populations of Cotton (*Gossypium mustelinum*) were collected and evaluated from the coastal plain north of Pernambuco, Brazil. Such populations occur in urban areas in a state of real expansion and with imminent risks of extinction. As a result of these risks and the state of real expansion, aiming at the *ex situ* conservation of these genetic resources, branches of 66 plants were collected in three populations of *G. mustelinum* that are located in restinga vegetation in the localities of Ponta de Pedras and Bara of Catuama, both in the municipality of Goiana and in the locality Sossego Beach in the municipality Island of Itamaracá. The collected genotypes were inserted in a new Germplasm Bank (BAG) at the Federal Rural University of Pernambuco, after which a sample composed of 24 genotypes contained in the BAG was collected to perform genetic diversity studies using molecular markers of ISSR type. For the molecular analysis, 24 accesses with 4 ISSR primers were analyzed, which produced a total of 36 bands, with a mean of 1,52 alleles per amplified locus. The genetic dissimilarity values, calculated according to the complement of the Jaccard index, ranged from 0.000 to 0.080. The UPGMA method grouped the accesses into three groups. The UFRPE30, UFRPE42 and UFRPE45 accessions were more dissimilar and UFRPE-48, UFRPE-50, UFRPE-52, UFRPE-55, UFRPE60, UFRPE06, UFRPE28, UFRPE29, UFRPE1, UFRPE2, UFRPE17 the least dissimilar. The ISSR markers used in this study demonstrated efficiency in the detection of molecular polymorphisms, revealing genetic variability among the 24 accessions. Considering the results obtained in this work, it is possible to infer that there is considerable genetic variability among the accessions of cotton, demonstrating the importance of the markers in the analysis of variability of species not studied, such as *G. mustelinum*.

Keywords: *Wild species, genetic variability, genetic resources*

1. INTRODUCTION

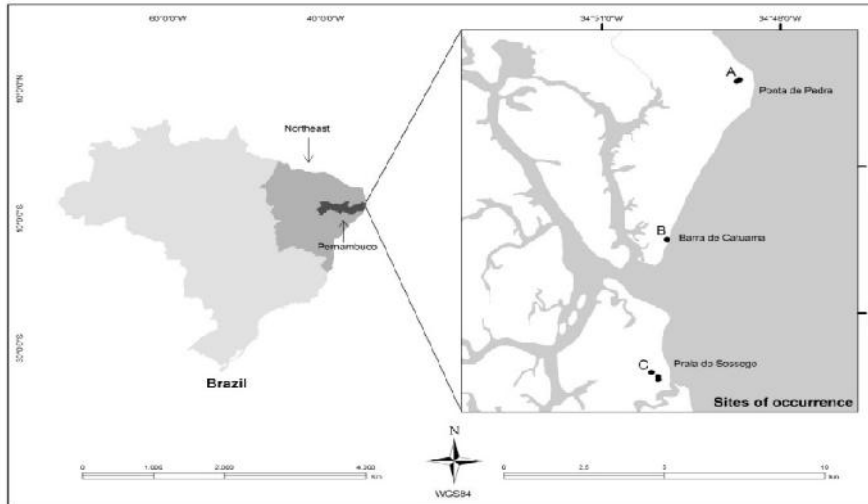
The Brazilian flora is composed of numerous wild species that constitute important reservoirs of genes, which can be introgressed in the cultivated species, aiming the availability of a greater genetic variability for the conservation and the improvement of plants. In this general work will be studied five native species of Brazil with focus on diversity and existing genetic conservation, the first species to be studied is *G. mustelinum* Miers ex Watt.

Cotton is the common name given to several species of the botanical genus *Gossypium* L., from the family Malvaceae. There are about 40 species, shrubs, native to the subtropical and tropical regions, some of which are used for the production of the textile fiber known as cotton. The genus *Gossypium* constitutes important reservoirs of genes, which can be introgressed in the cultivated species of cotton, aiming the genetic improvement of plants [1]. The wild species *G. mustelinum* Miers ex Watt is endemic only in northeastern Brazil and has been described in the states of Rio Grande do Norte (RN), Ceará (CE), Bahia (BA) and Pernambuco (PE). Recently, three populations of *G. mustelinum* were reported on the northern coast of the State of Pernambuco (PE), located in the restinga area of Goiana and Ilha de Itamaracá. The three populations are extremely vulnerable because they occur in urban areas and are subject to genetic erosion. Therefore, it is necessary to characterize them morphologically and molecularly in order to provide strategies for the conservation of the genetic diversity of this species. This work was proposed to collect the accesses for the implantation of an *ex situ* collection to assure the conservation of the germplasm.

33
34
35
36
37
38
39
40
41
42

2. MATERIAL AND METHODS

The plant material was collected in the coastal plain north of the state of Pernambuco, Northeast Brazil, in restinga vegetation in the areas of Ponta de Pedras (S 07°37,255 " W 34°48,728 ") and Barra de Catuama (S 07°40.493 'W 34°49.900'), both in the municipality of Goiana and in Praia do Sossego (between coordinates S 07°40,584 "W 34°49,158" and S 07°43, 208 "W 34°50,165") in the municipality Ilha de Itamaracá (Fig. 1), a material belonging to UFRPE study groups from Paraíba was also used in this study.



43
44
45
46
47
48
49
50
51
52
53
54
55

Fig. 1. Location of the populations: Ponta de Pedras (A), Barra de Catuama (B) and Sossego Beach (C), Pernambuco, Brazil.

After the collection on October 15, 2017, the genotypes were planted in plastic bags of 5 liters containing a mixture of soil and substrate of coconut powder and kept in a greenhouse located in the Department of Agronomy of the Federal Rural University of Pernambuco - Recife PE. After 90 days, a germplasm bank (BAG) containing the 66 genotypes distributed in four populations was implemented at UFRPE (Fig. 2). Then, it was stipulated to perform genetic diversity assessments by ISSR, a sub-sample with 24 genotypes, divided among the three populations collected in Pernambuco and a contrasting population from Paraíba (Table 1).



56
57
58
59

Fig. 2. Genotypes under development in the plant house, and implementation of the Active Germplasm Bank (BAG).

60

61 After five weeks of development, leaves of the 24 genotypes of the sub-sample were collected for
 62 DNA extraction [2]. DNA samples were quantified on 0.8% agarose gel, 0.5X TBE buffer (0.045
 63 mM Tris-Borate, 0.001 M EDTA, pH 8.0), stained with Blue Grenn Loading Dye I and visualized in
 64 transliner (Hing Performance Ultraviolet Transilluminator). For the electrophoretic run, 10 μ l of a
 65 solution containing 1 μ l of 10X diluted DNA plus 2 μ l of loading buffer (4 g of sucrose + 0.025 g blue of
 66 bromophenol) and 7 μ l of MilliQ water were applied.

67

68 The DNA quantification of the samples was performed by comparing them to bacteriophage lambda
 69 DNA whose concentration was 25 ng / μ L. The 24 subsamples selected in the Germplasm Bank
 70 (Table 1) were submitted to evaluations with ISSR-type markers (Table 2), using four nucleotides
 71 flanking semi-specific regions of DNA, ISSR markers were previously developed and available from
 72 the Laboratory of Genetic Resources of the Federal University of Alagoas.

73

74 **Table 1. Identification of the 24 cotton subsamples of the UFRPE BAG.**

75

Identification	Source	Identification	Source
UFRPE-01	Ponta de Pedras	UFRPE-21	Ilha de Itamaracá
UFRPE-02	Ponta de Pedras	UFRPE-27	Ilha de Itamaracá
UFRPE-04	Ponta de Pedras	UFRPE-28	Ilha de Itamaracá
UFRPE-05	Ponta de Pedras	UFRPE-29	Ilha de Itamaracá
UFRPE-06	Ponta de Pedras	UFRPE-30	Ilha de Itamaracá
UFRPE-07	Ponta de Pedras	UFRPE-35	Ilha de Itamaracá
UFRPE-08	Barra de Catuama	UFRPE-46	Paraíba
UFRPE-09	Barra de Catuama	UFRPE-48	Paraíba
UFRPE-10	Barra de Catuama	UFRPE-50	Paraíba
UFRPE-12	Barra de Catuama	UFRPE-52	Paraíba
UFRPE-15	Barra de Catuama	UFRPE-55	Paraíba
UFRPE-17	Barra de Catuama	UFRPE-60	Paraíba

76

77 **Table 2. Identification of the four ISSR oligonucleotides used for the 24 genotypes of the**
 78 **UFRPE BAG.**

79

Locus Identification of the ISSR	Composition of the ISSR
UFAL-09	(ACA) Tri-nucleotídeo
UFAL-10	(AAC) Tri-nucleotídeo
UFAL-11	(AAG) Tri-nucleotídeo
UFAL-12	(GA) Di-nucleotídeo

80

81 Cyclination was obtained in thermocyclers (Eppendorf-Mastercyher Gradient), where initially the
 82 DNA was denatured at 95°C for 12 minutes. 47 cycles of denaturation - annealing - extension
 83 followed. In the first 11 cycles of amplification, denaturation was done at 94°C for 15 seconds; the
 84 annealing temperature in the first cycle was 65°C for 30 seconds, being decreased one degree at
 85 each cycle (touch down), reaching 55°C in the eleventh cycle. For the extension, a temperature of
 86 72°C for 1 minute was used. The remaining thirty-six cycles occurred at 94°C for 15 seconds; 55°C
 87 C for 30 seconds and 72°C for 1 minute. Final extension was followed at 72°C for 6 minutes. The
 88 amplified fragments were separated by 2.5% agarose gel, 0.5X TBE buffer (0.045 mM Tris-Borate,
 89 0.001 M EDTA, pH 8.0), stained with Blue Grenn Loading Dye I and visualized in transliner (Hing
 90 Performance Ultraviolet Transilluminator.

91

92 To analyze the ISSR loci we used the GenAEx version 6.5 program [3]. The mean number of alleles
 93 per locus was obtained by the ratio between the total number of alleles and the total number of loci.
 94 The diversity among the subsamples was calculated from the allelic frequency (π) of the expected
 95 heterozygosity between the subsamples and the genetic distance.

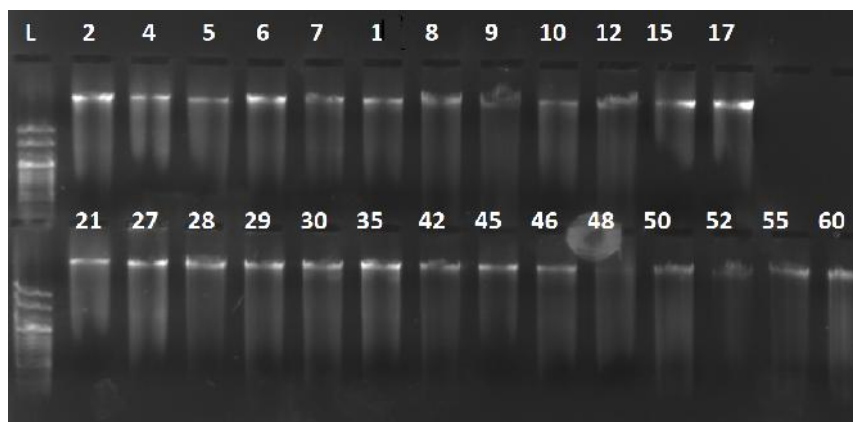
96

97 From the distances obtained by the dissimilarity index, cluster analyzes were performed using the
 98 agglomerative hierarchical arithmetic mean method between unweighted pairs (UPGMA) and the
 99 Tocher hierarchical method. From the distance matrix obtained by the UPGMA grouping method, the
 100 simplified representation of the distances was done by means of a dendrogram, using the Program for
 101 the determination of genetic diversity.

102
103
104
105
106
107

3. RESULTS AND DISCUSSION

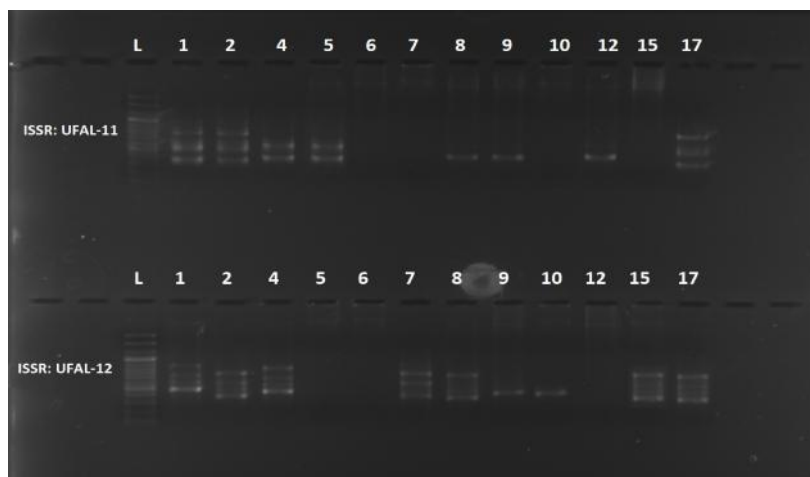
The DNA extraction using the methodology of [2] was successfully obtained, and the genomic DNA samples were suitable for the PCR reactions performed in the study as shown in Fig. 3.



108
109
110
111
112
113
114
115
116
117

Fig. 3. 0.8% agarose gel with genomic DNA from genotypes collected.

Fig. 4 shows the existence of genetic variability for *G. mustelinum* genotypes evaluated by the ISSR markers UFAL-11 and UFAL-12, evidenced by the segregation of the populations. The genotypes that make up each phenotype class are presented in Table 1. The 24 subsamples belonging to the Cotton Germplasm Bank of UFRPE, when evaluated through 4 ISSR oligonucleotides, presented 20% polymorphism.



118
119
120
121
122
123
124
125
126
127
128
129
130
131

Fig. 4. 2.5% agarose gel with amplified PCR products on UFAL-11 and UFAL-12 primers.

The four ISSR loci amplified a total of 36 alleles, with an average of 1,521 alleles per amplified locus, distributed among the 24 cotton subsamples. Oligonucleotides UFAL-09 and UFAL-10 were monomorphic for all subsamples, amplifying only one allele per locus. Of the 4 evaluated oligonucleotides 1 amplified five alleles (UFAL-11), and the UFAL-12 oligonucleotide amplified a total of seven alleles. The allele that showed the highest frequency of 0.500 is in the UFAL-11 oligonucleotide and the one that showed the lowest frequency (0.041) is in the UFAL-12 oligonucleotide.

The evaluation of the genetic diversity among the subsamples of the Cotton Germplasm Bank of UFRPE, using molecular markers ISSR, showed the formation of close groups with 19% variability

132 between the groups, which should have been caused mainly by the large number of subsamples that
 133 originated from those collected.

134

135 The results obtained in this work are compatible with those presented by [4], which evaluated the
 136 genetic diversity of cotton subsamples from the use of 56 pairs of BNL oligonucleotides, verified the
 137 amplification of 62 polymorphic loci, of which a total of 325 alleles were amplified, with a mean of five
 138 per marker. Likewise, [5], seeking to identify the genetic diversity and the population structure of 43
 139 cotton cultivars and strains, observed that of the 33 ISSR markers used, 15 presented to the
 140 amplification of 104 polymorphic alleles. However, [6], studying 65 strains and four cotton genotypes,
 141 verified that only 9 of the 19 ISSR primers used showed polymorphism, with each primer amplifying
 142 only one locus, with the number of alleles produced at the polymorphic locus equal to 2.

143

144 The [7] affirm that ISSR markers are useful in the identification of cultivars and evaluation of genetic
 145 diversity, due to the high reproducibility, thus presenting advantages over other methods such as
 146 those based on PCR. In the same sense [8] states that the simple internal repetitive sequence (ISSR)
 147 technique can be used for rapid differentiation between related individuals due to the high degree of
 148 polymorphism, reproducibility and also because it contains a low cost.

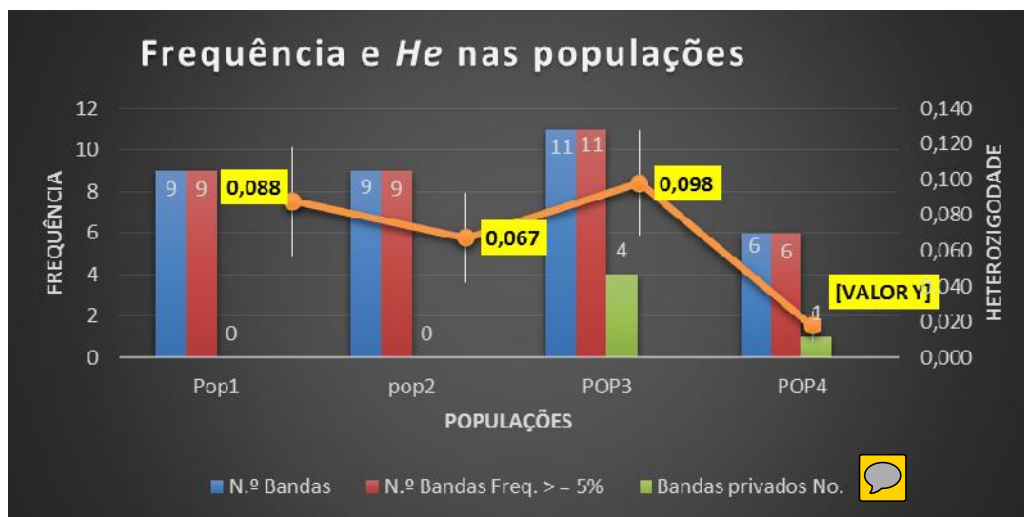
149

150 The highest heterozygosity rate (0.098) was obtained for Population 3 (Ilha de Itamaracá), followed by
 151 Population 1 (0.088) native of Ponta de Pedras. The lowest rates of (0.018 and 0.067) were observed
 152 for Populations 2 (Barra de Catuama) and Population 4 (Paraíba) respectively, the mean
 153 heterozygosity was 0.068, corresponding to a low level of genetic diversity.

154

155 The low rate of determined heterozygosity among the cotton populations of the UFRPE BAG can be
 156 determined by the high kinship index between the subsamples. According to [9] inbreeding results
 157 from the mating of related individuals, being able to alter the genetic makeup of the population. This is
 158 done by increasing homozygosity and, consequently, by decreasing heterozygosity, thus altering the
 159 genotype frequency, but not the gene frequencies. In plants such as cotton that have a mixed
 160 breeding system, different inbreeding coefficients are found due to variations in the rates of natural
 161 self-fertilization ([10] PEDROSA, 2005) REFERENCIA DE TESE.

162



163

164

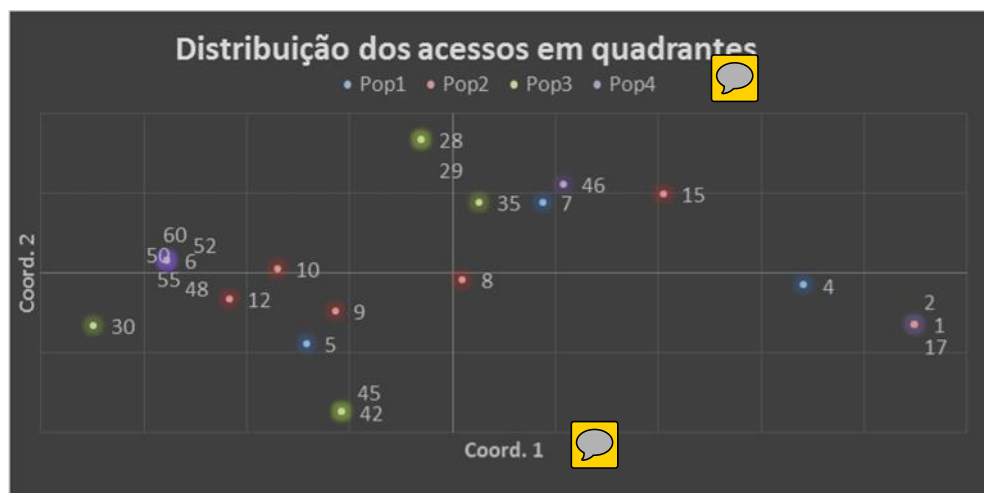
165 **Fig. 5. Allelic frequency and heterozygosity of 24 *Gossypium* accessions estimated by 4 ISSR**
 166 **primers.**

167

168 The frequency values observed in Fig. 5 may infer that the size of a given population is a determining
 169 factor for the conservation of an allele. That is, in small groups of individuals the existence of reduced
 170 generations already makes possible the occurrence of allelic fixation, from the gene drift. In larger
 171 groups, the lead should take longer. The presence of private bands in POP3 (Itamaracá Island) and
 172 POP4 (Paraíba) populations can also be observed in Fig. 5, indicating a favorable relationship
 173 between these populations, thus favoring the introduction of a possible characteristic of interest and /
 174 or increased genetic variability.

175
176
177
178
179
180
181
182
183

It can be observed in Fig. 6 that some genotypes have high genetic similarity and can be considered as siblings or clones, such as genotypes (UFRPE-48, UFRPE-50, UFRPE-52, UFRPE-55, UFRPE-60 and UFRPE -06) and the genotypes (UFRPE-28 and UFRPE-29) presented in the upper left quadrant. The genotypes (UFRPE-1, UFRPE-2 and UFRPE-17) and genotypes (UFRPE-42 and UFRPE-45) were also presented with high genetic similarity. Considering the result of this distribution, it is correct to inform that the accomplishment of crosses between these related individuals is not advisable, because it favors inbreeding and diminishes the genetic diversity among the accesses.




184
185
186
187
188
189
190
191
192
193
194
195
196
197
198
199
200
201
202
203
204
205
206
207
208
209
210
211
212
213
214
215
216
217
218

Fig. 6. Distribution of the genetic similarity of the 24 accesses in quadrants.

The genetic dissimilarity values presented in Table 3 ranged from 0.000 to 0.080, with the highest dissimilarities (0.080) among the accessions (UFRPE-30 x UFRPE-01 - UFRPE-30 x UFRPE-02 - UFRPE-30 x UFRPE-17), (UFRPE-35 x UFRPE-01 - UFRPE-35 x UFRPE-02 - UFRPE-35 x UFRPE-10 and UFRPE-35 x UFRPE-17) 28 and UFRPE-42 x UFRPE-29), (UFRPE-45 x UFRPE-15 - UFRPE-45 x UFRPE-28 and UFRPE-45 x UFRPE-29) and (UFRPE-46 x UFRPE-42 and UFRPE-45), with a general average of 0.037 between the accessions, indicating that they are promising crosses for the introgression of desired characteristics.

Studying plant genetic diversity through ISSR, [11], found values of dissimilarity varying from 0.06 to 0.67, showing high genetic diversity among the accessions. Considering the above, it is possible to infer that the results of genetic dissimilarity, in this work, reflect a genetic variability from considerable to low among cotton accessions. The dissimilarity found is justified by the fact that the number of ISSRs evaluated is still low and that the populations collected and evaluated may belong to groups with a high inbreeding rate, a fact already discussed in this study.

219 **Table 3. Gene dissimilarity matrix among 24 cotton accessions calculated based on the**
 220 **complement of the Jaccard coefficient, using 4 ISSR primers. Recife, PE, 2017/2018.** 

	1	2	4	5	6	7	8	9	10	12	15	17	28	29	30	35	42	45	46	48	50	52	55	60			
1	0,0																									1	
2	0,0	0,0																									2
4	1,0	1,0	0,0																								4
5	5,0	5,0	4,0	0,0																							5
6	7,0	7,0	6,0	2,0	0,0																						6
7	4,0	4,0	3,0	5,0	3,0	0,0																					7
8	4,0	4,0	3,0	3,0	3,0	2,0	0,0																				8
9	5,0	5,0	4,0	2,0	2,0	5,0	3,0	0,0																			9
10	6,0	6,0	5,0	3,0	1,0	4,0	4,0	1,0	0,0																		10
12	6,0	6,0	5,0	1,0	1,0	4,0	2,0	1,0	2,0	0,0																	12
15	3,0	3,0	2,0	6,0	4,0	1,0	3,0	4,0	3,0	5,0	0,0																15
17	0,0	0,0	1,0	5,0	7,0	4,0	4,0	5,0	6,0	6,0	3,0	0,0															17
28	7,0	7,0	6,0	6,0	4,0	3,0	5,0	6,0	5,0	5,0	4,0	7,0	0,0														28
29	7,0	7,0	6,0	6,0	4,0	3,0	5,0	6,0	5,0	5,0	4,0	7,0	0,0	0,0													29
30	8,0	8,0	7,0	3,0	3,0	6,0	4,0	3,0	4,0	2,0	7,0	8,0	7,0	7,0	0,0												30
35	8,0	8,0	7,0	7,0	7,0	6,0	6,0	7,0	8,0	6,0	7,0	8,0	3,0	3,0	4,0	0,0											35
42	5,0	5,0	6,0	2,0	4,0	7,0	5,0	4,0	5,0	3,0	8,0	5,0	8,0	8,0	3,0	7,0	0,0										42
45	5,0	5,0	6,0	2,0	4,0	7,0	5,0	4,0	5,0	3,0	8,0	5,0	8,0	8,0	3,0	7,0	0,0	0,0									45
46	5,0	5,0	4,0	6,0	4,0	3,0	5,0	4,0	3,0	5,0	2,0	5,0	4,0	4,0	7,0	7,0	8,0	8,0	0,0								46
48	7,0	7,0	6,0	2,0	0,0	3,0	3,0	2,0	1,0	1,0	4,0	7,0	4,0	4,0	3,0	7,0	4,0	4,0	4,0	0,0							48
50	7,0	7,0	6,0	2,0	0,0	3,0	3,0	2,0	1,0	1,0	4,0	7,0	4,0	4,0	3,0	7,0	4,0	4,0	4,0	0,0	0,0						50
52	7,0	7,0	6,0	2,0	0,0	3,0	3,0	2,0	1,0	1,0	4,0	7,0	4,0	4,0	3,0	7,0	4,0	4,0	4,0	0,0	0,0	0,0					52
55	7,0	7,0	6,0	2,0	0,0	3,0	3,0	2,0	1,0	1,0	4,0	7,0	4,0	4,0	3,0	7,0	4,0	4,0	4,0	0,0	0,0	0,0	0,0				55
60	7,0	7,0	6,0	2,0	0,0	3,0	3,0	2,0	1,0	1,0	4,0	7,0	4,0	4,0	3,0	7,0	4,0	4,0	4,0	0,0	0,0	0,0	0,0	0,0			60

221
 222
 223
 224
 225
 226
 227
 228
 229

In the agglomerative dendrogram UPGMA (Fig. 7), the formation of three large groups can be observed, considering the mean distance of 0.19 between groups. The G1 group consists of 14 accessions (UFRPE-55, UFRPE-60, UFRPE-52, UFRPE-50, UFRPE-48, UFRPE-06, UFRPE-10, UFRPE-09, UFRPE-12, UFRPE-30, UFRPE UFRPE-05, UFRPE-42 and UFRPE-45); The group G2 is composed of 7 accesses (UFRPE-07, UFRPE-15, UFRPE-04, UFRPE-04, UFRPE-01, UFRPE-02 and UFRPE-17), UFRPE-28 and UFRPE-29).

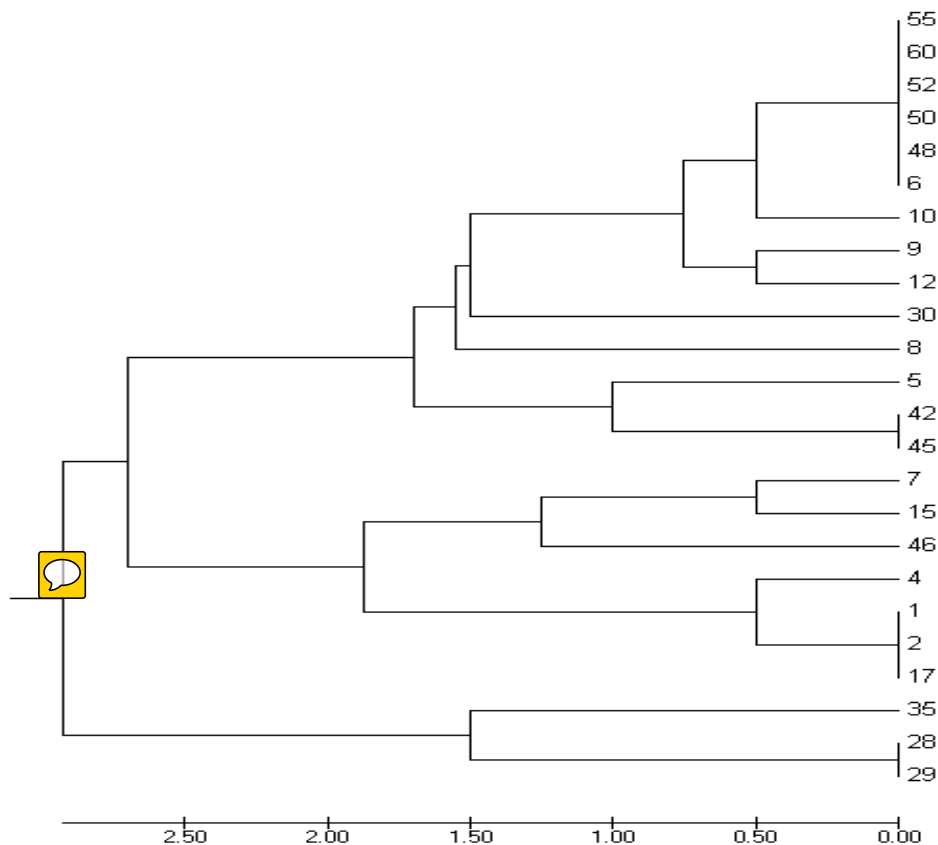


Fig. 7. Dendrogram obtained by the agglomerative method UPGMA, relating the 24 accessions of cotton based on the information of 4 loci of ISSR.

According to Pinto et al. (2008)[12] **stab** molecular markers have been an important tool in the genetic improvement of plants, since they detect polymorphism directly at the DNA level, allowing observations in the genome on the relations between genotype and phenotype. Thus, the incorporation of molecular markers in cotton breeding helps, from the choice of the best breeders for a cross, to the identification of superior genotypes.

For [13], many deleterious recessive traits are hidden by dominant alleles in heterozygous forms, and appear after inbreeding. In this case, the author recommends the use of unrelated individuals in crosses, avoiding these undesirable effects.

Based on the observations made by Pinto et al. (2008)[12] **stab** on the efficiency of the use of molecular markers, and in the observations made by [13] on the use of unrelated individuals in genetic crosses, and in the magnitudes of the characteristics evaluated in the current work, it is suggested crosses between individuals of groups that are allocated by the dendrogram of Fig. 7, since they indicate a greater degree of diversity, less possibility of inbreeding effects and greater capacity to explore the genetic variability of the groups evaluated.

The results generated in this work are in accordance with the literature on the importance of molecular markers, when compared to other works, such as the one performed by [14], demonstrating the importance of the markers in the analysis of variability of species little studied.

4. CONCLUSION

The results obtained with the analyzes of the present study allow to conclude that:

260 The collection of genotypes and implantation of the BAG in UFRPE to ensure genetic variability was
 261 performed successfully;

262

263 ISSR markers were efficient in the detection of molecular polymorphisms and, therefore, of genetic
 264 variability among accessions of **G. mustelinum**;

265

266 The UFRPE-30, UFRPE-35, UFRPE-42 and UFRPE-45 accessions were the most divergent in
 267 relation to the others;

268

269 Based on the similarity evaluated by the agglomerative dendrogram UPGMA, the accessions formed
 270 three large genetic groups.

271

272

REFERENCES



273

274 1. GOTMARE V, SINGH P, MAYEE C D, DESHPANDE V, BHAGAT C. Genetic variability for
 275 seed oil content and seed index in some wild species and perennial races of cotton. Plant
 276 Breeding. 2000;123(2):207--208.

277

278 2. FERREIRA, M. E; GRATTAPAGLIA D. Introdução ao uso de marcadores moleculares em
 279 análise genética. 3rd ed. Brasília: Embrapa – Cenargem; 1998. Portuguese.

280

281 3. PEAKALL, R.; SMOUSE P. E. GenAIEx 6.5: genetic analysis in Excel. Population genetic
 282 software for teaching and research-an update. Bioinformatics.2012;28(19):2537--2539.

283

284 4. LIU, S.; SAHA, S.; STELLY, D.; BURR, B.; CANTRELL, R. G. Chromosomal assignment of
 285 microsatellite loci in cotton. **Journal Hereditario**.2000;91(4):326--332.

286

287 5. MOIANA, L. D.; VIDIGAL FILHO, P. S.; GONÇALVES VIDIGAL, M. C.; LACANALLO, G. F.;
 288 GALVÁN, M. Z.; CARVALHO, L. P.; MALEIA, M. P.; PACHECO, C. M.; RIBEIRO, T.; ZENI
 289 NETO, H.; COIMBRA, G. K. Genetic diversity and populations structure of cotton (*Gossypium*
 290 *hirsutum* L. race *latifolium* H.) using microsatellite markers. African Journal of
 291 Biotechnology.2012;54(11):11640--11647.

292

293 6. MENEZES, I. P. P.; HOFFMANN, L. V.; ALVES, M. F.; MORELLO, C. L.; BARROSO, P. A. V.
 294 Distância genética entre linhagens avançadas de germoplasma de algodão com uso de
 295 marcadores de RAPD e microsatélites. Pesquisa Agropecuária Brasileira, Brasília.
 296 2008;43(10):1339--1347. Portuguese.

297

298 7. GOULÃO, L.; OLIVEIRA, C. M. Molecular characterisation of cultivars of apple (*Malus x*
 299 *domestica* Borkh.) using microsatellite (SSR and ISSR) markers. Euphytica. 2001;122(1):81--
 300 89.

301

302 8. BORBA, R. S.; GARCIA, M. S.; KOVALLESKI, A.; OLIVEIRA, A. C.; ZIMMER, P. D.;
 303 BRANCO, J. S. C.; MALONE, G. Dissimilaridade genética de linhagens de *Trichogramma*
 304 *Westwood* (Hymenoptera: Trichogrammatidae) através de marcadores moleculares ISSR.
 305 Neotropical Entomology. 2005;34(4):565--569. Portuguese.

306

307 9. QUEIROZ, S. A. Efeito da endogamia sobre características de crescimento de bovinos da
 308 raça gir no Brasil. Revista Brasileira de Zootecnia, Viçosa.2000;29(4):1014--1019.
 309 Portuguese.


310

311 10. PEDROSA, M. B. Potencial genético para seleção de uma população de algodoeiro de fibra
 312 colorida. 2005. 75 f. Tese (Doutorado em Fitotecnia) – Curso de Pós-graduação em
 313 Fitotecnia, Universidade Federal do Ceará, Fortaleza, 2005.

314

315 11. PINTO, L. R. et al. Avaliação de marcadores do tipo microsatélites para determinação do
 316 perfil molecular dos materiais do programa cana-IAC. In: CONGRESSO NACIONAL DA
 317 SOCIEDADE DOS TÉCNICOS AÇUCAREIROS E ALCOOLEIROS DO BRASIL - STAB, 9,
 318 2008, Maceió. Anais... Maceió: STAB Regional Leste, p. 419-423, 2008.

319

- 320
321
322
323
324
325
326
327
328
329
330
12. OLIVEIRA, M. S. P.; AMORIM, E. P.; SANTOS, J. B. dos; FERREIRA, D. F. Diversidade genética entre acessos de açaizeiro baseada em marcadores RAPD. *Ciência e Agrotecnologia, Lavras*.2007;31(6):1645--1653. Portuguese.
 13. RONZELLI JUNIOR, P.  Melhoramento genético de plantas. Curitiba: Graffice: Editora Gráfica; 1996. Portuguese.
 14. JUNQUEIRA, K. P.; FALEIRO, F. G.; BELLON, G.; JUNQUEIRA, N. T. V.; FONSECA, K.G.F.; LIMA, C.A.; SANTOS, E.C. Variabilidade genética de acessos de pitaya com diferentes níveis de produção por meio de marcadores RAPD. *Revista Brasileira de Fruticultura, Jaboticabal*. 2010;32(3):840--846. Portuguese.