

Original research paper
**PHYSICAL AND CONSERVATIONAL
DIAGNOSIS OF THE HYDROGRAPHIC
MICROBACY OF RIO FARINHA**

ABSTRACT

Introduction: O processo de degradação do sistema ambiental da microbacia do rio Farinha é decorrente da inadequação do solo e fatores naturais.

Aims: The present work had as objective to evaluate the degree of deterioration of the environmental system of the hydrographic basin of the river Farinha, the geo - referenced information are related to the physical characterization of the microbasin, based on the physical conservationist diagnosis of the Geographic Information Systems - GIS.

Methodology: The hydrographic basin of the Farinha River, located in the Center-West region of Paraíba, includes an area of 8.0915,8 ha. Images of the Landsat 8 satellite, OLI sensor in bands 3, 4 and 5 were applied, are classified as a visual and supervised process. With this, the software QGIS 2.18.17 generated vector data and the IDRISI Selva V.17, stands out as a means to process the raster data. Under these conditions, the Digital Terrain Model (MDT) of the SRTM project was included for plans related to the polygonal delimitation of the microbasin, characterizing a drainage network, compartmentalization and mean slope.

Results: The natural vegetation of the Caatinga presents as open tree shrub and closed arboreal, with the predominance of open vegetation, representing 48037 ha (59.4%). Concerning conflict analysis for land use, it was observed that compartment 1 was the only one that did not present such events. Compartment 2 resulted in a higher percentage of conflicts with 24.1%, however, areas with 4.2% have agricultural divergences, the 19.9% are due to livestock and mining activities. In relation to compartment 3 the area 6.3% is used for agriculture.

Conclusion: The physical-conservationist diagnosis of the microbasin of the river farinha presents an incorrect management, for this, a suitable study must be done to reduce the degradation of the area. Consequently, public policies are designed to interconnect communities living in these areas with their physical environment in a sustainable way.

Keywords: Environmental degradation. Caatinga. Geotechnology. Semiarido

1. INTRODUCTION

The hydrographic basins are units of environmental analysis in which they can be considered the most adequate in the geographic space, the adoption of systemic studies are constructed by the environmental, social and economic aspects, thus, its morphology is totally integrated in the natural and social actions of the environment [1].

The relationships among these different components form scenarios with marked and dynamic peculiarities, with direct participation of society [2]. The interaction of the factors: which factors? Biotic or abiotic? soil, water, vegetation and fauna correspond to the

Formatted: Highlight

natural interferences (weathering, landscape modeling), the anthropic ones are for the use and exploitation of the environment, interfering in the ecosystem as a whole [3].

In the Brazilian semi-arid region, the river basins are degraded due to economic interests, resulting in intensive grazing, the withdrawal of native vegetation as a source of energy, extraction of riparian forest and traditional agriculture, standardizing a set of natural characteristics of the region. It is worth noting that, intense rains, as well as extreme droughts, contribute directly to soil degradation [4].

Araújo et al. [5] affirm that there is inadequate soil use, providing a considerable increase in the potential for erosion and the degree of desertification of this system in the Farinha watershed, whose spatial distribution is the scope of this study. The lack of technical knowledge is justified by Santos [6], where appropriation areas constitute the inadequacy of water channels. Agricultural practices in the semi-arid basins result in imbalance of the functional diversity of the system.

In the environmental diagnostic aspect, the conservationist physicist is the most important, since it allows the immediate and complete application of the hydrographic basins. It consists essentially in comparing your introduction just brings up topics and do not relate to previous .Correct this trend and let the points be inter related as introducing the research. You are not teaching a subject but introducing a research. the current use with the potential of the earth, based on the roughness coefficient [7]. According to Destro [8], this diagnosis assists in the implementation of environmental readjustment measures, since, combined with the analysis of physical indicators, land use is highlighted and assists in the rational planning of natural resources.

Formatted: Highlight

The feasibility of the physical-environmental analysis of the environmental system will allow the use of geotechnologies. Santos et al. [9], affirm that the set of tools available in their framework (geotechnologies) is of great importance in the identification of land use and cover, making possible the formation of plans for mapping vegetation and potential conflicts to the use of the soil.

The development of these plans ("Layers") will be based on remote sensing products. Fernandes [10] states that the products derived from this technology allow the extraction of topographic information such as delimitation of perimeters, drainage, slope, areas, among other physical characteristics of the river basins in a fast and efficient way, having significant relevance in environmental planning.

The aim of this work was to evaluate the degree of degradation of the environmental system of the Farinha river basin, using geo - referenced information regarding the physical characterization of the microbasin and the physical conservation of the watershed using the Geographic Information Systems - GIS.

2. MATERIAL AND METHODS

2. Geography1-Characterization of the study area

The hydrographic basin of the Farinha river, located in the Center-West region of Paraíba, includes an area of 8.0915,8 ha. Located at the following geographical coordinates: 07°01'39 "at 07°16'50" south latitude and 36°43'41 "at 37°16'28" longitude west of Greenwich (Figure 1).

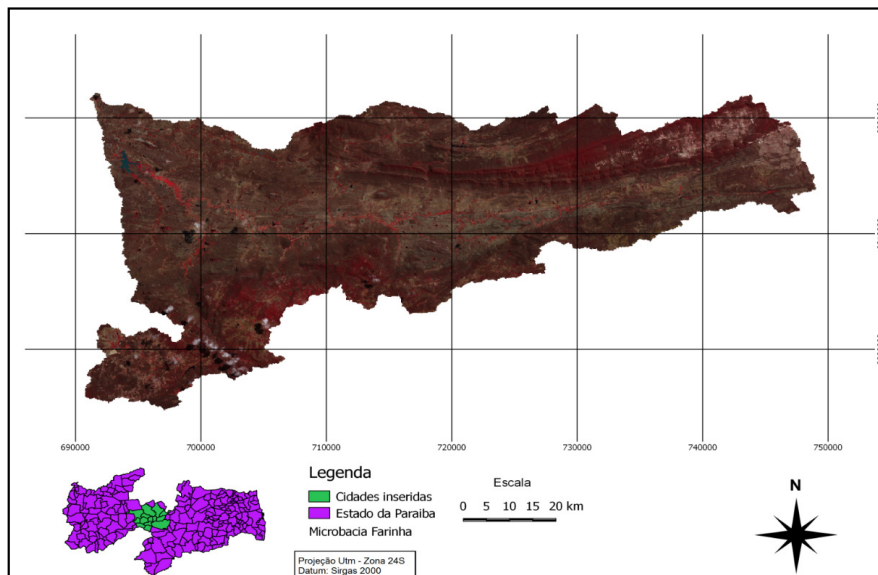


Figure 1. Map of the location of the hydrographic basin of the Farinha-PB river.

The municipalities that integrate the microbasin are the following: Passagem, its area is integrally inserted in the microbasin and the municipalities of Areia de Baraúnas, Assunção, Cacimbas, Junco do Seridó, Patos, Quixaba, Salgadinho, Santa Luzia, São Mamede, Taperoá and Teixeira part of the hydrographic basin set [11].

According to the classification of Koppen [12], the climate of the microbasin is classified as Bsh, hot and dry, with two well defined seasons, the rainy season extends from January to April and the dry season from May to December, the average annual rainfall is around 700 mm.

The vegetation in the microbasin is of the Caatinga type, with presence of medium to small woody species, usually endowed with spines. These species exhibit the deciduous mechanism that lose leaves in the dry season.

According to SUDEMA [13], the open Arboreal Caatinga (CAAA), is found in most of the microbasin, is characterized by a high degree of degradation, due to the incorrect use of the soil, becoming the sparse vegetation, with few trees and average height of 3 m, with predominance of herbaceous and cactaceous. In the sites of the watershed, slopes of hills and mountains are presented, in which there is a lower degradation, classifying the Closed Arboreal Shrub Caatinga (CAAF), with presence of arboreal individuals of average height of 5 m.

In the Farinha river basin, the diversity of soil units is verified. According to the mapping carried out on the soils, there is an exploratory level made by Embrapa [14], with the predominance of Orotic Crumic Luvisols, planing areas, in the other regions, Eutrophic

Littoral Neosol, Neolithic Regolithic Dystrophic and to a lesser extent Cambisols, Soil types are characteristic of a hyperoxerophic Caatinga.

2.2 Material used

The cartographic data used in this study were the SUDENE digital topographic charts of 1972, Patos (SB.24-ZDI) and Juazeirinho (SB.24-ZD-II) squares in the 1: 100,000 scale and UTM / SAD69.

The image used was the satellite in digital format Landsat 8 OLI; bands 3, 4 and 5, referring to orbit 215 and point 065, and passage of August 25, 2017; IDRISI Selva V. Software 17.0 "SIG" (Clark University, 2012) and QGIS 2.18.17;

For the topographic analysis of the microbasin the Digital Terrain Model (MDT) of the SRTM (Shuttle Radar Topography Mission) project is composed of 4 scenes of which are: 07s_37w, 07s_38w, 08s_37w and 08s_38w of September 14, 2014 and resolution of 30m.

The Software used consisted of IDRISI Selva V. 17.0 "SIG" (Clark University, 2012) and QGIS 2.18.17.

2.3 SRTM Data Processing

The SRTM obtained through the Earth Explore site, in GeoTIFF format, with the reference system in the WGS 84 Datum and 30m resolution. The process with the following routines were applied: raster> micelle> mosaic, to join the scenes; raster> projections> redesign, in which it modifies the coordinate reference system for the Datum SIRGAS 2000 - UTM - 24S.

For the filling of the areas without data in raster map the algorithm "r.fillnulls" with spline interpolation was used.

2.4 Automatic generation of the traverse, subdivision and drainage map of the watershed of the river Farinha

The delimitation of the macrobasia emphasizes the acquisition of the hydrological properties in the QGIS GIS, in which the complement of GRASS "r.watershed" stands out. This module derives from maps of flow accumulation, drainage direction, drainage location and microbasin boundary.

In this respect, the flow direction map and the drainage network are organized with a "Threshold = 5000" (Threshold), naming the "Single Flow Direction" algorithm, with implantation in the algorithm "r.water.outlet" for demarcation of the microbasin, beginning to be considered exuberant at coordinates UTM 691187920 w, 9221582.966 s, previously chosen on the "Stream" map. For the composition of the drainage network map and flow direction, the "r.stream" modules are produced for the following resolutions: (1) hierarchization of the drainage network by the algorithm "r.stream.order" (2) of the microbasin, number and length of rivers with each order and drainage density, using the algorithm "r.water.outlet" [15].

2.5 Generation of the mean slope map

Slope is a significant physical feature, since it is related both to the flow velocity and to the vulnerability of the region. The slope of the microbasin is based on the MDT in the IDRISI SIG environment, observing the following routine: GIS Analysis> Surface Analysis>

Topographic Variables> SLOPE. With support in this plane the average slope per stratum is extracted, according to the following routine: Gis Analysis> Database Query> Extract> Average.

For the declivity parameter, classes of interpretation of the obtained values were established, following the methodology of EMBRAPA [16].

Table 1. Classes of slop, according to EMBRAPA (1979)

Declivity (%)	Relief
0-2	Plan
2-5	Soft wavy
5-10	Wavy
10-20	Wavy strongly
20-45	Mountainous
>45	Strongly hilly

2.6 Generation of the vegetation cover map and current use

The production of the used plan and the ground cover is based on the hybrid (visual / automatic) classification of Landsat8 orbit satellite images 215 and point 065, the images were of August 25, 2017. The homogeneous spots (subjects) in samples of at least 100 pixels for each training area.

2.7 Physical-conservationist diagnostic (CFD)

The physical conservationist diagnosis is developed according to the methodology proposed by Rocha [17], adapting to the region of the Farinha river basin, starting with the Ruggeness Number (RN), specifying land use in four classes , described below:

- A - Land suitable for agriculture
- B - Land suitable for pasture
- C - Land suitable for pasture / afforestation
- D - Land with aptitude for afforestation

The Roughness Coefficient is given by the following expression:

$$RN = D \times H$$

In which:

- RN = roughness coefficient (dimensionless).
- D = drainage density of the compartment evaluated, in km / ha.
- H = average slope of the compartment evaluated, in%.

Next, there is verification of each RN value, for the calculation of the amplitude between the largest and smallest value, given by the formula:

$$A = \text{higher RN value} - \text{lower RN value}$$

With the value of "A", the value of the intervals (I) for the classes was calculated using the following formula:

$$I = A/4$$

The denominator 4 is the number of fitness classes, defined by alphabet letters (A, B, C, D).

2.8 Suitability of the soils of the watershed

The suitability of the land use comes from physical characteristics of the watershed, for example: the roughness coefficient. Rocha [18] shows that from the results obtained the differences of variation of the coefficient, it becomes possible to differentiate and indicate the respective classes of soil capacity. [should this be here or the introduction? This is materials and methods.. How can you be talking of results here? Which result???](#) Lands indicated for both agricultural crops and urbanization are defined as class A: areas suitable for agriculture and also urbanization, class B: are indicated for livestock, in class C: are suitable land for the use of pasture or reforestation D: are suitable lands for forest preservation.

Formatted: Highlight

The degradation of the physical environment throughout the study area adopted the procedure suggested by Rocha [17]:

Formatted: Highlight

- Conflicts - For the enclosure distributed in class A, it is specified the sum of the agricultural areas and areas with burn practices, however, the slope is greater than 10%. If the slope is less than 10%, the conflicts are recognized by the burned areas. For compartments in classes B and C, it refers to the sum of agricultural areas, burned areas and possible mapped associations. In relation to compartment D, it is equivalent to the sum of the agricultural areas, pastures, fires and possible associations present.
- N - Refers to the percentage of areas occupied by forest cover, expressed total area of the compartment in question.
- A Forests - Microcatchments with a mean slope of less than 15% must have a minimum of 25% afforestation. Areas with a mean slope, equal to or greater than 15%, there is a management plan with a minimum of 50% forest cover. The area proposed for afforestation on lands whose average slope of less than 15% corresponds to the difference of 25% in the percentage of remaining forest cover in the compartment. The land, whose average slope is equal to or greater than 15%, applies the same intervention, and the difference to the percentage of existing forest cover is set at 50%.
- Excess (+) and Availability (-) in Agriculture - Excess (+) and Availability (-) in agriculture, for class A compartment, refers to the difference of its total area to the sum of the forest cover, areas buildings, agricultural areas, fires, water bodies and areas to be planted. For compartments contained in classes B, C, and D, assign the sum of the areas with agricultural cultivation.
- Area to be worked for the correct management of the microbasin - for class A compartments is the sum of the areas of conflict, and areas with agricultural excess or availability. For compartments included in Classes B, C and D, it is the sum of the areas to be planted, as well as areas of excess or availability in agricultural cultivation.
- Degraded area - sum of conflict areas and areas proposed for afforestation.
- % of degradation - percentage of degraded area in each compartment and the average in each microbasin. [these seems beter of in the introduction. if you want it in the materials and methods then define the use of it AND STOP BRINGING UP](#)

INTRODUCTION Besides the materials and methods end with the purpose of the work clearly stated and defined. These you have not done.

Formatted: Highlight

3. RESULTS AND DISCUSSION

3.1 Natural plant cover

In order to carry out the work, the natural vegetation was classified as open and closed arboreal shrub, with a predominance of open vegetation, representing 48037 ha (59.4%) of the study area, which may be justified by the characteristics the inadequacy of the use and management of the microbasin studied. This section is for results. Why are you bringing materials and methods issue here? Take this to Materials and methods

Formatted: Highlight

The closed shrub caatinga occurs in places that are difficult to access to a lesser extent at points where the topographic features show sharp declivities, this typology was verified in 17% of the microbasin evaluated, distributed in 13828.5 hectares, presented in (Figure 2).

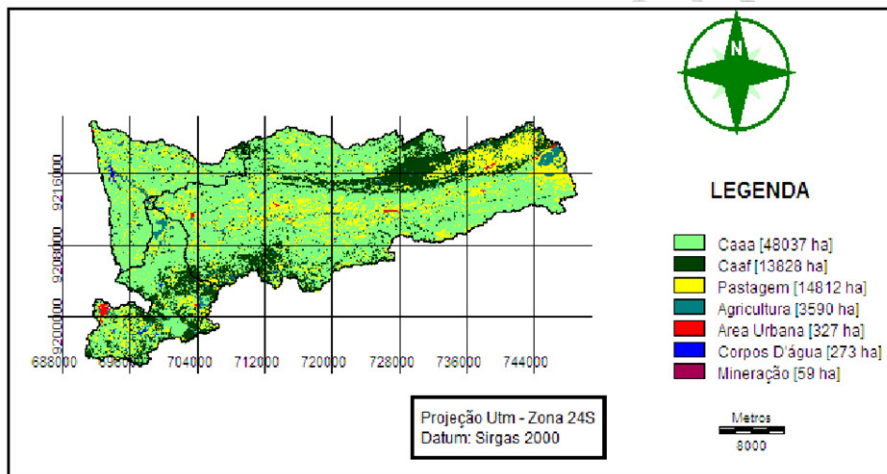


Figure 2. Use and occupation map of the river basin of Farinha River

In the area of the microbasin, inadequate agricultural practices occur along the rivers' channel with 4.4%, extensive cattle raising with 18.30%, with predominance of bovine and caprine cattle raising, urbanization with 0.44% and 'kaolin' mining areas with 0.07%, evidencing the inadequacy of land ownership, considering the environmental liabilities executed by practices in restricted areas with superlatively in the areas destined for permanent preservation.

A similar result is observed by Mendonça et al. [19], in a study developed in the Jatobá hydrographic basin, Patos-PB, identified that the area of the shrub Caatinga closed with 23.2%, and the woody shrub Caatinga open by 29.7%, already agriculture and livestock production by 41.4% and water bodies by 5.7%.

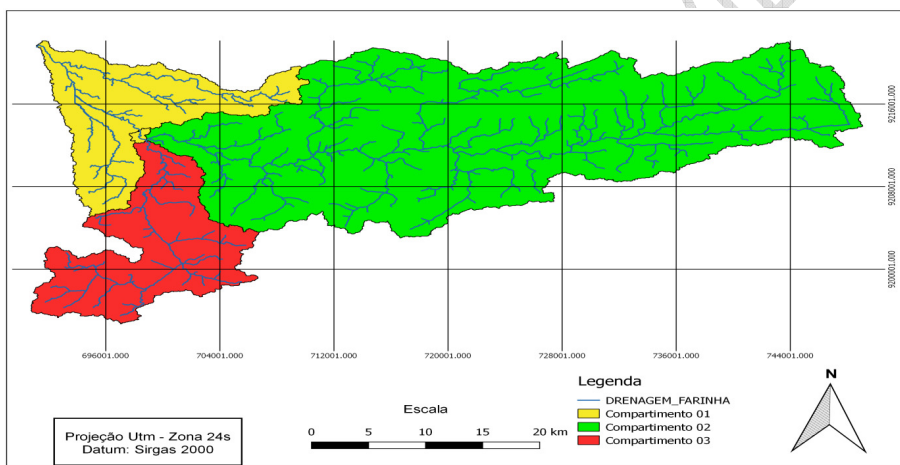
In a study carried out in the same area, Santos [20] identified the percentage of cover corresponding to 46% of the microbasin with open tree shrub caatinga and 24% of the

closed shrub caatinga, and a reduction in biomass of the open shrub caatinga the estimation of loss of 820 ha per year, indicating a possible deforestation process for the expansion of livestock production in the region, evidenced by the increase of anthropized areas.

Silva et al. [21] found that 44.64% of the vegetation of the watershed had open tree shrub caatinga 48.12%, closed shrub caatinga 2,5% pasture and 1.48% Agriculture.

3.2 Map of compartmentation and drainage of the watershed

The map shown in figure 3 represents the three compartments and drainage of the watershed. The compartment 1 presents an area of 12045.93 ha, the compartment 2 with 55536.58 ha and the compartment 3 with 13333.34 ha. The sum of the length of the drainage is estimated at 652,195 km. According to Rocha (1991) for the characterization and potential use of the land, Table 2 shows the aptitude of 68.63% for forest preservation. utilização potencial da terra, observa-se na tabela 2, aptidão de 68,63% para



preservação florestal.

Figure 3. Map of compartmentalization and drainage of the river basin of Farinha-PB.

This fact can be justified by the mean slope of more than 16% and the low average drainage. In relation to compartment 3 the aptitude is identified with pasture / afforestation, however, it obtained a slope of more than 10%, which indicates that conservation practices are necessary for pasture use in the area. Already compartment 1 aptitude is described for agriculture with 14.88%, the characteristics of flat areas near riverbanks show conditions favorable to agricultural practices.

In a similar study carried out in the Talhado-PB microbasin, Silva et al. [21] is equivalent compartment with capacity for forest preservation 62.7% and slope of 13.63%.

Table 2. Land use suitability, per compartment, of the river basin Farinha River - PB.

BASIC TABLE - Physical-Conservationist Diagnosis - Rio Farinha - PB.

[1]* Classes of RN	[2] Study areas	[3] Σ (RCT) (km)	[4] Compartment area (ha)	[5] Average declivity (%)	[6] Density of drainage (km/ha)	[7] RN x 10 ²
A	1	97,43	12045,93	0.284940	0,0170	0,48
D	2	451,014	55536,58	16.118392	0,0087	14,02
C	3	103,751	13333,34	13.079647	0,007781	10,17
Total	-	652,195	80915,85	-	-	-

According to the map of mean slope, (Figure 4) the percentage of areas of the following classes are: class 1: 0-2% (11,10%), class 2: 2-5% (26,88%) , class 3: 5-10% (18.55%), class 4: 10-20% (18.65%), class 5: 20-45% (18.31%), and class 6: , 5%).

It is observed that classes 1 and 2 are in an area near the urban perimeter, which are developed agricultural activities and livestock, relating to a total of 37.98% of the area. In relation to class 5 that is located in the range of 20-45% resembles the restriction areas for anthropic activities, since they are tops, hills, mountains and mountains.

However, class 6 with slopes greater than 45% corresponds to permanent preservation areas such as the slopes. In the area of the microbasin are represented by incelbergs and high hills around the Borborema Plateau.

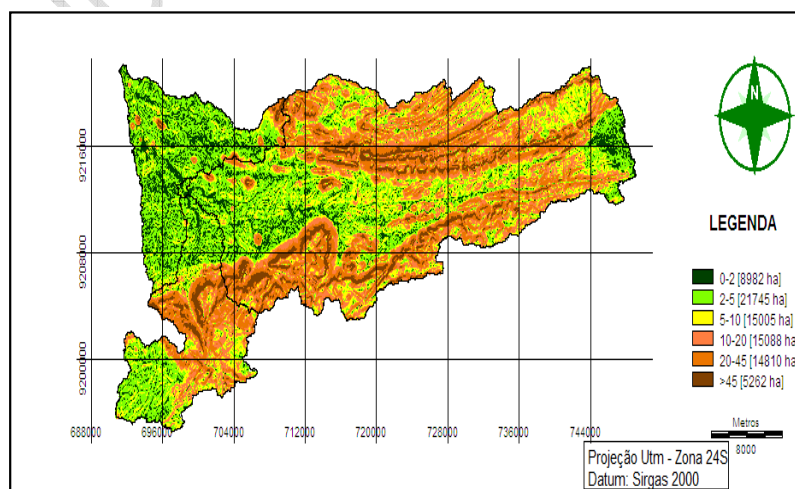


Figure 4- Slope map of the River Farinha micro-basin

The soils of these areas because they are steep, are highly susceptible to erosion, which requires greater protection. This way, the conservation of the areas avoids the drag of sediments that provoke the silting of dams and rivers in areas closer [22].

Duarte et al. [23] found similar results to this study in the Timbaúba watershed in the city of Remígio Paraíba, in which the flatter classes with slopes between 3-12% consisted of a greater part of the area with 60.32% of the total and areas with marked slope between 20-40% corresponded to 17.86%.

Medeiros [15] in a study elaborated in the Espinharas River Subbasin, observed that the slope of 0-3% represents 11.7% of the area, while the slope of 20-45% was 13.9%. mountainous and heavily mountainous areas with declivity greater than 45% indicated a total of 3.9%.

Ribeiro and Pereira [24], it is highlighted that the absence of vegetation in an area with a steep slope causes a higher flow velocity and, consequently, a lower amount of water contained in the soil, thus causing sedimentation of rivers and reservoirs exposing the basin to the phenomenon of degradation. For Soares et al. [25], the determination of slope in Watersheds is important because it becomes essential to determine the environmental planning that reduces anthropic interventions and guarantees the environmental balance.

3.2 Physical-conservationist application

According to Rocha (1991), the coefficient (Rn) (Rn), the parameters of amplitude of variation and the range of the roughness coefficient for the micro-basin of the Farinha river were calculated, whose values of the amplitude A = 13.54 and the interval between classes is (I) = 3.38 The value of the roughness coefficient (Rn), identified for the soil classification in the watershed was 3.38.

It allowed for the specification for Agricultural use, it is notorious that it is based on the values of class A, according to the classification of Rocha and Kurtz [26], that are of 1,09 - 10,63 (Table 3)

Table 3. Classes of roughness coefficient, of the river basin of Farinha-PB

Classes	Domain range (RN value)	Use	Found values
A	+ 3,38 0,48.....3,86	Agriculture A	1 RN
B	+ 3,38 3,87.....7,25	Pasture B	-
C	+ 3,38 7,26.....10,64	Grazing/Forestry C	1 RN
D	+ 3,38 10,65.....14,02	Florestamento D	1 RN

A similar result was observed by Campos et al [27], in the Bauru-SP watershed, with a roughness coefficient value of 4.68, indicating the Bauru river basin with capacity for agricultural use (Class A).

Barros et al [28], in a work in the yellow water stream watershed, Itaberá-SP, found the roughness coefficient of 13.36 classifying the soil as class B, which favors only pasture.

In table 4, for the roughness coefficient (RN) classes, we determined: A (with areas suitable for agriculture and urban expansion potential), class D (It is classified as unsuitable for agriculture and livestock use, allowing application only for afforestation) and C (indicates forests and limitations in pasture use).

CLASSE S OF RN [8]	COMPA RTMEN TS [9]	USE OF THE LAND (ha)							
		N (ha)		Σ N	2	3	4a	4b	5
		1a [10]	1b [11]						
A	01	491.31	9085.95	9577.26	1875.87	474.03	20.97	106.74	
D	02	9787.50	32120.10	41907.60	11076.39	2279.88	132.2	84.42	59.04
C	03	3549.69	6830.64	10380.33	1860.30	836.46	173.5 2	81.63	
TOTAL		13828,5	48036,69	6186,19	14812,56	3590,37	326,7	272,79	59,04

Table 4. Land use, by study compartment, in the Farinha – PB river basin.

The categories are natural vegetation and the current use of the compartments: 1 - Forests / natural vegetation (n), 1a - CAAF (Closed shrub caatinga) 1b - CAAA (open shrub caatinga), 2 - Pastures. 3 - Agricultural crops. 4 - Constructed areas: 4a Urbanization, 4b Water Corp, 5 - Mining area

The compartment 2, classified as class D, is classified as a permanent protection area, because it is an area with marked slope for anthropic activities and is strictly prohibited, in compliance with Brazilian environmental legislation, areas preserved with sensitive signs of erosion, native vegetation is still (2.33%) and pasture (11.36%), thus constituting a conflict of use.

Similar results were observed by Silva et al. [21] in the Talhado Paraíba watershed, in which compartments 1 and 2 with class D, shows the capacity for utilization of afforestation in agriculture (7.62%) and pasture (6.34%).

In compartments 1 (A) with potential for agriculture and urban expansion, it covers flat and slightly undulating areas, only 2.19% of the area is used for agriculture, the pasture area corresponds to 8.7%, in which the compartment predominates over that of agriculture, generating opposition in use. There is a marked highlight of areas of the open shrub caatinga (42%).

In a study in the Upper Paraíba River Basin, in Cariri Paraíba, Dornellas et al. [29] found that the cerrado shrub caatinga and the rarefied or open Caatinga together obtained 72%, but the high rate of deforestation (24%) reveals the presence of small crops (2.1%).

For compartment 3, which is in class C, the areas have moderate to marked slopes, the predominant presence of open tree caatinga (28%), and grazing areas (7.85%). In this case, the most suitable for this type of area is the forest preservation, the pasture can be cultivated together with appropriate cultural practices to avoid soil degradation mainly by erosion.

In the sum of the three compartments the pasture areas in the microbasin is 27.91%. The practice of animal husbandry in the semi-arid region is very widespread with extensive livestock farming, and semi-intensive for milk production. It is also worth noting the goat and sheep flocks [30]

It is observed in table 5, the specific characteristics for each compartment, through the RN suggests the potentiality and limiting factors of each area. The compartment 1 is characterized by Class A RN, its area is 12045.9 ha, in this compartment there was no conflict, since its class includes all soil types. In this compartment the cover with natural vegetation of 79% was examined, being satisfactory, since the minimum recommended for area with slope is less than 15% is 25%.

Table 5. Physical degradation of the Hydrographic Microbasin of Farinha river, PB.

Formatted: Highlight

CLAS SES RN [18]	COM PAR TME NTS [19]	ÁREA OF MICROBA C. (ha) [20]	CONFLICTS		N	A FORESTS		Excess (+) and availability (-) In agriculture		Area to be worked for the correct management of the watershed		Area deterio rated by Microb asin [30]	% of deteri oratio n per micro basin [31]
			USO (ha) [21]	(% [22]		(% [23]	(h a) [24]	(% [25]	(ha) [26]	(% [27]	(ha) [28]		
A	01	12045,93	-	-	79	-	-	1875,87	15,57	1875,87	15,57		
D	02	55536,58	13415,31	24,15	75,45	-	-	+2338,92	4,21	2338,92		13415,31	24,15
C	03	13333,34	836,46	6,27	77,85	-	-	+836,46	6,27	836,46	6,27	836,46	6,27
TOTA		80915,85	14251,77							5051,25		14251,77	

MICROBACY AVERAGE DEGRADATION The table is badly made . You made references to tab compartments so let it be legible.

Formatted: Font: 12 pt

Formatted: Font: 12 pt

Formatted: Font: 12 pt

Formatted: Font: 12 pt

However, compartment 1 presents around 1875.87 ha (15.57%), available for agricultural practices and should be managed to better exploit its potential, in this area there are no indicators of degradation. In order to exploit these new areas, measures are needed to promote agricultural production without a high degree of degradation, abandonment and afterwards the area does not become pasture.

In compartment 3 their lands fall into class C, which are suitable for reforestation and pasture. It has an area of 13333,34 ha, with a natural vegetation cover of 77.8%, above the minimum requirement of 25%, it is an extremely satisfactory situation with regard to forest reserves. It should be noted that in this compartment it presents a conflict area of 6.3% used for agriculture, making it urgent to suppress agricultural crops for the correct management of the microbasin.

As for compartment 2 their lands were distributed in class D, they have strong physical limitations only suitable for afforestation. This compartment has an area of 55536.58 ha, and 79% contains natural vegetation cover. However, 24.1% of this area has conflict, 4.2% presents agricultural practices and the 19.9% are due to conflicts with areas of livestock and mining activities, which is characterized by a situation of marked degradation in the use of the soil in this compartment

Only compartment 1 did not show any degradation, the others showed deterioration indices, in relation to conflict rates. The average degradation of the watershed was 17.61% of the area. According to Rocha [17], the limit value for physical conservation degradation is below 10%, reveals that the microbasin of the Farinha River presents a high degree of degradation due to anthropic activities performed incorrectly.

According to Westman [31], the conditions of natural vegetation cover, densification of the drainage network and slope are determining factors for the distribution of land in the classes of land use and slope.

The comparison with the study carried out in the Brazilian semi-arid region is worth the degradation found by Baracuhy et al. [32] studied the watershed of the Paus Brancos stream in Campina Grande - PB. In their research Baracuhy reported the high degradation of the Paus Brancos creek microbasin, related to the small vegetation cover (10%) of the area with the mentioned description.

Mendonça [33], in a study carried out in the hydrological microbasin of Riacho Una, Sapé-PB, noticed an average degradation of the microbasin of 37.2%, due to the low percentage of vegetation cover due to the excess of agriculture, and temporary crops.

However, in order to reduce the degradation of the microbasin, it is necessary to increase the environmental, socioeconomic and vegetal diagnoses, in the case of the Farinha river basin, families need the natural resources for survival, the socioeconomic conditions are limited, for this, the public policies should promote the connection of the community as the physical environment in a sustainable way.

Complementary studies should be carried out in this microbasin, aiming to establish measures for the prevention, conservation and recovery of degraded areas, as well as to identify existing forms of human interventions, promoting subsidies for the environmental planning of the Farinha river basin.

4. CONCLUSION

The application of geotechnologies provides fast and efficient environments in the georeferenced environmental analysis of micro-basins, fundamental for the integrated development of the physical-conservationist diagnosis, achieving extremely satisfactory results and reducing costs.

In the analysis of conflicts of land use, it was analyzed that compartment 1 was the only one that did not present such events. In compartment 2 resulted in a higher percentage of degradation, due to conflicts with agricultural areas, pasture and mining. In compartment 3, their lands presented conflicts with agricultural areas, indicated only for pasture and forests.

he microbasin of 17.61%, suggests that a high degree of degradation, are of the anthropic activities carried out incorrectly without any type of sustainable management.??/ what do you mean?What is anthropic importance are you referring to anthropogenic activities?

Formatted: Highlight

The physical-conservationist diagnosis, it is concluded that the micro-basin of the Farinha River presents incorrect management of its lands, being necessary of more studies so that I can reduce the degradation and to implement the public policies in the community interacting like the physical means in a sustainable way.

REFERENCES

1. Albuquerque ELS, Souza MJN. Environmental and socioeconomic conditions in the coastal basins of the metropolitan eastern sector of Fortaleza, state of Ceará. Brazilian Journal of Physical Geography. 2016; 9 (01):110-124. (In Portuguese)
2. Zanella ME, Olimpio JLS, Costa MCL, Dantas EWC. Socio-environmental vulnerability of the Lower course of the Cocó River Basin, Fortaleza-CE. Society and Nature Magazine. 2013; 25 (2): 317-332. (In portuguese)
3. Silva BAW, Azevedo MM, Matos JS. Environmental Management of Urban Hydrographic Basins. Home 2006;3(5). (In portuguese)
4. Alves TLB, Azevedo PV, Santos CAC, Santos FAC. Spatial and temporal evolution of the albedo and surface vegetation cover in the upper Paraíba river basin. Geosul. 2018; 33 (66): 147-171. (In Portuguese)
5. Araújo IP, Lima JR, Mendonça IFC. Use and Degradation of Natural Resources in the Brazilian Semi-Arid: Study in the Hydrographic Microbasin of Farinha River, Paraíba, Brazil. Revista Caminhos de Geografia, Uberlândia. 2011; 12 (39): 255-270. (In portuguese)
6. Santos HCM. The application of geotechnologies in the spatial management of the Rio Farinha - PB basin according to Brazilian environmental legislation. 2011. 46p.

Monography (Undergraduate) Forest Engineering Course. CSTR / UFCG, Patos - PB. (In Portuguese).

7. Scapini GP. Physical conservationist diagnosis and its relation with sedimentation and landscape preferences. 2006. Dissertation [Master's] Post-Graduation Program in Forest Engineering. UFMS, Mato Grosso do Sul. (In Portuguese)
8. Déstro GFG. Physical-conservationist diagnosis in the study of land-use conflicts in hydrographic basins. *Revista Brasileira de Ciências Agrárias*. 2010; 5 (4): 525-53. (In portuguese)
9. Santos AR, Silva AG. Geotecnologias and Environmental Analysis: practical applications [e-book] - Alegre, ES: CAUFES, 2015. 230p. (In Portuguese)
10. Fernandes G, Mengue DHS. Use of SRTM data for delimitation of watersheds in the state of Goiás. 2017. In: XV symposium of geology of the center-west advances in geology in central Brazil Goiania. *Electronic Annals...Available: <http://sgco2017anais.siteoficial.ws/geotecnologias/XVSGCO_161.pdf>*. Accessed: 28 December 2018 (In portuguese)
11. ARAÚJO, I. P. de. Use and degradation of natural resources in the Brazilian semi-arid region: study in the river basin of Farinha / PB. 2010. 134p. Dissertation (Forest Science) - CSTR / UFCG, Patos-PB, 2010. (In portuguese).
12. Alvares CA, Stape JL, Sentelhas PC, Gonçalves JLM, Sparovek G. Köppen's climate classification map for Brazil. *Meteorologische Zeitschrift*. 2014;22:711–728.[Accessed 20 October]Available:http://www.lerf.eco.br/img/publicacoes/Alvares_et al_2014.pdf
13. SUDEMA – Superintendência de Administração do Meio Ambiente. Atualização do diagnóstico florestal do Estado da Paraíba. João Pessoa: SUDEMA, 268p. 2004. Alvares CA, Stape JL, Sentelhas PC, Gonçalves JLM, Sparovek G. Köppen's climate classification map for Brazil. *Meteorologische Zeitschrift*. 2014; 22:711–728.
14. Embrapa, Brazilian Agricultural Research Company. Embrapa UEP Soils. Recife, 2006. Available: <www.uep.cnps.embrapa.br/solos/index.html>. Accessed: 7 December 2018.
15. Medeiros FS. Geotechnology applied to the use and soil cover of the sub-basin of the spine-PB / RN / PE river, with emphasis on areas of permanent preservation and restricted use. Patos-PB. Dissertation (Master degree) - Federal University of Campina Grande, Postgraduate Program in Forest Sciences, 2018. (In Portuguese).
16. Embrapa, Brazilian company of agricultural research. National Soil Survey and Conservation Service (Rio de Janeiro, RJ). Summary of the 10th Technical Meeting of Soil Survey. Rio de Janeiro, 83p. 1979. (In Portuguese).
17. Rocha JSM. Manual of environmental projects. Santa Maria - RS: University Press, 1997. 423p.

18. Rocha JSM. Manual of Integrated Management of Hydrographic Basins. Santa Maria: Editions UFSM, 1991. 181 p. (In portuguese)
19. Mendonça IFC, Silva JER, Souza ATA, Lopes IS, Medeiros neto PN. Adequacy of the use of the soil according to the environmental legislation in the hydrographic basin of the Jatobá dam, Patos - PB. *Geography*.2010; 19 (2): 49-62. Available: <<http://www.uel.br/revistas/uel/index.php/geografia/article/view/5284/6497>> Accessed: 13 January 2019. (In Portuguese).
20. SANTOS, H. C. M. dos. The application of geotechnologies in the spatial management of the Rio Farinha - PB basin according to Brazilian environmental legislation. 2011. 46p. Monography (Undergraduate) Forest Engineering Course. CSTR / UFCG, Patos - PB, 2011. (In Portuguese)
21. Silva ER, Lima JR, Mendonça IFC, Assis FRV. Classification of the suitability of land use in the Talhado microbasin, Santa Luzia municipality - PB, *Revista de Ciências Agroambientais*. 2017; 15 (1): 96-105. Available: <<https://periodicos.unemat.br/index.php/rcaa/article/view/2202/1793>> Accessed: 15 January 2019. (In Portuguese).
22. Machado RE, Vettorazzi CA, Xavier AC. Simulation of alternative scenarios of land use in a watershed using modeling and geoprocessing techniques. *Soil Science*. 2003; 27: 727-733. Available: <<http://www.scielo.br/pdf/rbcs/v27n4/a17v27n4.pdf>> Accessed: 14 January 2019. (In portuguese).
23. Duarte SMA, Silva EAL. Mapping of the Level of Environmental Degradation of Timbaúba, Remígio-PB microbasin. *Exact and Technological Sciences*. 2009; 8 (1) 53-58. Available at <<http://pgsskroton.com.br/seer/index.php/exatas/article/view/637/606>> Accessed: 12 January 2019.
24. Ribeiro GF, Pereira SY. Morphometric analysis of the Vargens de Caldas basin, Planalto de Poços de Caldas, MG. *Earth*. 2013: 15-20. Available: <<https://www.ige.unicamp.br/terrae/V10/PDFv10/TD-10-2-Glaucielen.pdf>> Accessed: 15 January 2019. (In Portuguese).
25. Soares LS, Lopes WGR, Castro ACL, Araujo GMC. Morphometric analysis and prioritization of river basins as an integrated environmental planning instrument. *Journal of the Department of Geography*. 2016; 31: 82-100. Available in <file:///C:/Users/rober/Downloads/107715->
26. Rocha JSM, Kurtz SMJM. Manual of integrated management of watersheds. 4. ed. Santa Maria: Editions UFSM CCR / UFSM, 302 p. 2001. (In portuguese).
27. Campos S, Uzó M, Campos M, Pissarra TCT, Rodrigues BT. Morphometric characterization of the Bauru / SP river basin obtained by geoprocessing techniques. *Inter Espaço Grajaú / MA*. 2015; 1 (3): 222-234. DOI: 10.18766 / 2446-6549 / interespaco.v1n3p222-234. (in portuguese)

28. Barros AC, Tagliarini FSN, Penachio S M. Morphometric analysis of the hydrographic microbasin of the Yellow Water Stream, Itaberá-SP for environmental management. Environmental Forum of the High Paulista. 2017; 13 (1): 60-72. Available: <http://www.amigosdanatureza.org.br/publicacoes/index.php/forum_ambiental/articloe/view/1490/1512> Accessed: 12 January 2019.
29. Dornellas PC, Seabra VS, Xavier RA, Silva RM. Estimation of soil losses in the Upper Paraíba River Basin, semi-arid region of Paraíba State. OKARA Magazine: Geography in debate. 2017; 11 (2): 338-350. Available:<<http://www.periodicos.ufpb.br/index.php/okara/article/view/37658/19016-Texto%20do%20artigo-217278-2-10-20160815.pdf>> Accessed: January 15, 2019. (In Portuguese)
30. Souza ATA. Physical-conservationist diagnosis of the hydrological basin of the jatobá dam, Patos - PB. 2010. Monography (Undergraduate Forest Engineering) - Federal University of Campina Grande, Patos - PB. Available:<http://www.cstr.ufcg.edu.br/grad_eng_florest/mono_ef/mono_antoniotercio.pdf> Accessed: 13 January 2019
31. Westeman WE. Ecology impact assessment and environmental planning. New York: John Wiley & Sons, 1995.
32. Baracuhy JGV, Kurtz SMJM, Kurtz FC, Duarte SMA, Lima VLA, Rocha JSM, Dantas neto J. Physical conservationist deterioration of the microbasin of Paus Brancos stream, Campina Grande, PB. Brazilian Journal of Agricultural and Environmental Engineering. 2003; 7 (1): 159-164. (In Portuguese)
33. Mendonça IFC Adequacy of the agricultural use and estimation of the environmental degradation of the lands of the hydrographic basin of the Una stream, Sapé-PB. Thesis (Doctorate) - State University of Campinas, Faculty of Agricultural Engineering, Campinas, SP, 2005. (In Portuguese)