

2 **Social and productive indicators of forage palm and the**  
3 **survival of livestock activity in the semi-arid region of**  
4 **northeastern Brazil.**

5 **Hermes Alves de Almeida<sup>1\*</sup>, Elthon Rondinelli de Almeida Soares<sup>2</sup>, José Antonio**  
6 **dos Santos Neto<sup>3</sup>, Ivandro de Oliveira Pinto<sup>4</sup>**

7  
8 <sup>1</sup>Associate Professor, State University of Paraiba, Department of Geography, CNPq Research  
9 Productivity Scholarship, Campina Grande, Paraiba, Brazil

10 <sup>2,3</sup>Graduate in Geography, State University of Paraiba, Campina Grande, Paraiba, Brazil

11 <sup>4</sup>Geography teachers, State University of Paraiba, Campina Grande, Paraiba, Brazil

12  
13 **Authors' contributions**

14 This work was done in collaboration. The author HAA conceived, designed, coordinated the study and  
15 edited the manuscript. The other authors assisted in the collection and analysis of the data. With the final  
16 manuscript, all authors read and approved

17 **ABSTRACT**

18  
19 The importance of the cultivation of forage palm (*Opuntia ficus indica* Mill) for the agriculturalists of the  
20 semi-arid region of Northeast of Brazil, in particular the one of the State of Paraiba, is due to its  
21 adaptability to the environmental conditions, especially, in the dry period, since it is the only alternative to  
22 feed the herd in most of the localities of this region. The plague of carmine cochineal (*Dactylopius*  
23 *opuntiae*) has been decimating the planting of this important forage in the intermediate geographic region  
24 of Campina Grande, Paraiba, Brazil. In view of this, it was necessary to carry out a quantitative and/or  
25 qualitative diagnosis of the areas cultivated with the traditional palm (giant cultivar) and its revitalization,  
26 with the introduction of new varieties resistant to this pest, in four localities of this region, these  
27 determinations being the main objectives. The territorial cut included about fifty farms in the four localities,  
28 being geo referenced using GPS and satellite imagery from Google Earth. The diagnosis consisted of the  
29 application of structured and semi-structured questionnaires, interviews and in loco observations. Data  
30 analyzes were performed using statistical distributions of measures of central, dispersion and frequency  
31 trends. The main results indicated that forage palm in the semi-arid state of Paraiba, Brazil, is the main or  
32 only source of food for ruminants. Carmine cochineal (*Dactylopius opuntiae*) decimated traditional palm  
33 varieties and the only alternative was to discard part of the herd and reduce livestock activity. The levels  
34 of infestation of carmine cochineal and destruction of palms are of the order of 90%. The program of  
35 revitalization of traditional palm cultivation by clams resistant to carmine cochineal has been the  
36 alternative for the continuity of livestock activity in this region, although there is a contribution of drought.

37 Keywords: livestock; palm forage; cochineal carmine, livestock sustainability;

38 **1. INTRODUCTION**

39 The forage palm (*Opuntia ficus indica* Mill) originates in Mexico and is scattered on almost all continents.  
40 Initially it was used as an ornamental plant and the option of the cultivation of forage species and without

41 thorn and became the main food source for ruminants, especially, in the northeastern semiarid region,  
42 due to its adaptation to the type of climate.

43  
44 The distribution of *Opuntias* species in the world is due to their high genetic variation, which originates  
45 from the great ecological diversity of the areas where they are native [1] and by the high degree of  
46 genetic diversity due to sexual reproduction and vegetative propagation ([2]; [3]).  
47

48 The semi-arid Northeast occupies about 10.0% of the Brazilian territory and more than half of this  
49 geographic cut, the regimes of spatial and temporal distribution of rains are irregular. Even in the short  
50 rainy season, there is irregularity in the amount and distribution of rain, lasting from three to five months  
51 and there are still chances of not raining [4]. This region has the largest area planted with forage palm in  
52 Brazil [17]; [20] and [25] and this forage is, on most farms, the only source available to feed the herd of  
53 cattle, sheep and goats. As conditions do not favor the formation of native pastures or other forages in  
54 the dry season, the livestock activity in this region is dependent on the forage palm.  
55

56 The search for forage to feed ruminants, especially in periods without rain (dry), the forage palm (*Opuntia*  
57 *ficus indica* L. Mill) stands out for presenting morphological characteristics that make it tolerant to long  
58 droughts. Rainfall in the semi-arid region is a decisive factor for the production of palm and livestock  
59 activity, in general, because in the short rainy station, which lasts for about two to four months, the totals  
60 of rains are extremely irregular in amount and in distribution, when comparing one location to another [5].  
61

62 The forage palm is an exotic cactus, with more than 1400 species and 120 known genres ([6]; [7]), native  
63 to Mexico, where it is used in cooking, agribusiness, production dyes and cosmetics. In the northeastern  
64 semi-arid region, it is used to feed cattle, sheep and goats because it is the only forage that persists,  
65 especially, in the dry season.  
66

67 The forage palm without a thorn (*Opuntia ficus-indica*) is a cactus native to Mexico ([6]. In the northeast  
68 of Brazil it was introduced around 1880, in Pernambuco, through seeds imported from Texas-United  
69 States [8]. There are two species of the genus *Opuntia ficus-indica* (L) Mill, giant palm, and the *Nopalea*  
70 (*cochenillífera Salm-Dyck*), sweet palm, both do not contain spines.  
71

72 The giant and the *Nopalea* palm têm as genetic characteristics of rusticity, drought-resistant and high  
73 water use efficiency provide the adaptability to the semi-arid environment, which are associated with  
74 good acceptability of consumption by cattle [9].  
75

76 In recent years, encouraging the planting of this fodder is not due to its importance as the main source of  
77 feed for ruminants, but for the environmental conservation of the Caatinga biodiversity, especially in the  
78 climate change scenario.  
79

80 The agronomic characteristics of resistance to drought caused the forage palm to incorporate the  
81 livestock of Paraíba and other areas of the northeastern semi-arid region, because it is the only one that  
82 perseveres and remains nourishing during the long periods of drought and, therefore, guarantees the  
83 maintenance of the herd ([10], [11]) and can also be used in the form of bran [12], in addition to providing  
84 environmental conservation [13].  
85

86 **Moreover**, In the Northeast of Brazil, the genus *Opuntia* and *Nopalea* are spineless cactus without spines  
87 and the most used as fodder, standing out the giant palm, the round and the small one, for having fast  
88 growth and moisture content superior to the other cactus. It is not known how a destructive pest known  
89 as carmine cochineal (*Dactylopius opuntiae*) was introduced in the State of Paraíba, Brazil, whose origin  
90 is Mexican, detected in traditional palm plantations, especially in the giant variety, between mid 2009 and  
91 2010 [5].  
92

93 **Generally**, The emergence of this pest in the semi-arid region of Brazil occurred unexpectedly, since the  
94 original purpose of carmine was to produce a natural dye for use in the food and cosmetics industry.  
95 However, there is strong evidence that this introduction was erroneously done on the *Dactylopius*  
96 *opuntiae*, rather than the correct one, *Dactylopius coccus*, for the production of the "carmine cochineal"  
97 dye on an experimental scale [14].  
98

99 Encouraging the cultivation of forage palm is a strategy that aims not only the development of livestock in  
100 the Northeast, but the survival of this activity. However, with the emergence of carmine cochineal  
101 (*Dactylopius opuntiae*), palms with traditional varieties were practically decimated.  
102

103 The carmine cochineal arose in the traditional forage palm plantations, mainly in the state of Paraíba in  
104 an unexpected way, since the original objective was to produce a natural dye, the carmine, to be used in  
105 the food and cosmetics industry. **Nevertheless**, there is strong evidence that this introduction was  
106 erroneously done in the *Dactylopius opuntiae*, rather than the correct one, *Dactylopius coccus*, for the  
107 production of the "carmine cochineal" dye on an experimental scale [14].  
108

109 This species of pest is considered the most damaging to the crop and the dispersion / decimation occurs  
110 very quickly. Thus, the advance of carmine cochineal on forage palm crop in the intermediate geographic  
111 region of Campina Grande, Paraíba, Brazil, which includes 72 municipalities in this state the State, and in  
112 other locations. The damages caused by the decimation of the palms are high and without the palm there  
113 is no way to feed the ruminants, besides being used as a bargaining chip during the dry season, when its  
114 price reaches three times [15].  
115

116 Cochineals are insects that suck the rackets of this forage by inoculating toxins. This process results in  
117 the weakening of the plants, causes the yellowing and the fall of the cladodes. When the infestation rate  
118 is high and if a control measure is not adopted, the infested area is practically decimated [16].  
119

120 The name of carmine cochineal is due to the production of the natural red dye (carmine), from the  
121 synthesis of carminic acid, which has great commercial importance in the production of cosmetic and,  
122 therefore, an income generating activity.  
123

124 In the northeastern semi-arid region, this pest was observed around 2001 in the states of Pernambuco  
125 and Paraíba and currently occupies the status that previously belonged to scale cochineal [17]. Their  
126 recognition is relatively easy, because on the surface of the cladodes appear small white circles similar to  
127 cotton threads and when they are crushed, it releases a reddish substance, which is carmine [18].  
128

129 The failure to produce carmine dye in Brazil may have been motivated by the introduction of the "false"  
130 cochineal (*Dactylopius opuntiae*), because this pest has a high destructive power [19].  
131

132 **In the other side**, the advance of carmine cochineal in the state of Paraíba occurred in the plantations of  
133 the giant variety, the one most cultivated, especially, in the intermediate geographic region of Campina  
134 Grande [20; 22]. As a result of this pest, the extermination of this variety is inseparable; therefore, the  
135 carmine cochineal has directly affected the follow-up of livestock, an activity that is the main generator of  
136 employment and income in this geographic cut.  
137

138 The devastation of forage palm cultivation in Paraíba, due to this pest, is very worrisome even because  
139 the level of infestation comes to decimate the entire planting. If there is no food such as maintaining cattle  
140 ranching, especially in the main dairy, in the basin of the municipalities of Caturité and Boqueirão, for  
141 example, whose social and economic losses compromise even the small and medium-farmer's patrimony  
142 [20].  
143

144 In most locations states of Paraíba and Pernambuco were the most affected by carmine cochineal where  
145 the infestation has already decimated about 90% of the traditional planting. With the advent of carmine  
146 cochineal, the option of planting is with varieties resistant to this pest [20].  
147

148 This condition led to the establishment of a forage palm revitalization program, which consists of  
149 replacing more productive palm clones with higher nutritional value and, in particular, being resistant to  
150 carmine cochineal, such as small and elephant ear varieties [21].  
151

152 The alternative to not extinguish livestock activity in the northeastern semi-arid region is to revitalize the  
153 planting of the traditional forage palm decimated by tolerant varieties of carmine cochineal. **Also**, Without  
154 the palm, there is no way to continue this important activity, which is the basis for sustainable rural  
155 development in the semi-arid region of Paraíba.  
156

157 In view of this, there was a need for a study on forage palm, before and after the incidence of carmine  
158 cochineal, in the geographic cut of the State of Paraíba, Brazil, because the livestock activity is inductive  
159 of the local sustainable development, being these determinations the main objectives.

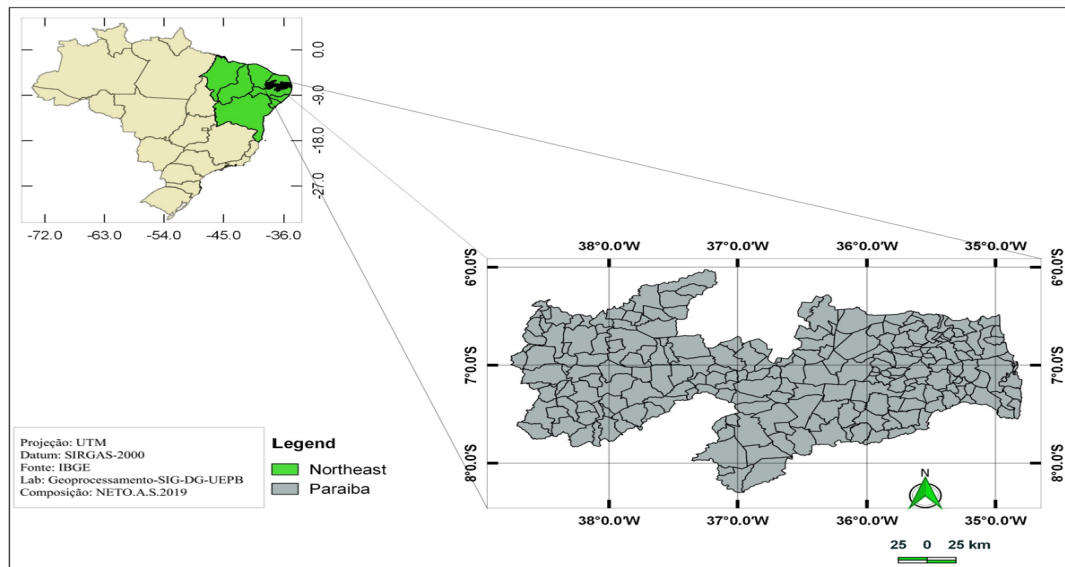
160

## 161 **2 MATERIAL AND METHODS**

162

### 163 **2.1 Location of the Study**

164 The experimental area of this work included about 20 farms, located in the dairy basins of the  
165 intermediate geographic region of Campina Grande, Paraíba, Brazil [22], which includes 72 municipalities  
166 of which the municipalities of Boa Vista (7°15'58" S, 36°14" 'W), Boqueirão (7°29'15"S, 36°07'17" W),  
167 Caturité (7°25'20" S, 36°01'41" W) and Pedra Lavrada (6°45'14"S, 36°28'13"W), according to the  
168 geographic map of the State of Paraíba Fig. 1.  
169



170  
171 Fig. 1. Geographic map of northeastern Brazil, with emphasis on the State of Paraíba  
172

173 The experimental unit consisted of about 50 farms, in the four localities mentioned above, where the  
174 predominant climate type belongs to the tropical domain, by the Koppen climatic classification, is hot  
175 semiarid (BSh), characterized by an annual average of lower rainfall to 600 mm and average temperature  
176 of the coldest month exceeding 18 °C.  
177

178 The methodological procedures adopted consisted in the application of semi-structured questionnaires,  
179 with questions related to the social and productive indicators of traditional forage palm cultivation and the  
180 tolerance to carmine cochineal and the follow-up that involves livestock activity.  
181

182 This diagnosis included the sizes of cultivated and decimated areas, the use of forage palm, among  
183 others. In order to establish the pluvial regime, the rainfall data of the four localities were used, which are  
184 arranged chronologically. Due to the asymmetry in the annual distribution model, the annual medians  
185 were adopted as a measure of central tendency and the anomalies of the relative annual deviations of  
186 rainfall, in mm, were calculated by the difference between the rain value observed in the year and the  
187 expected median.  
188

189 Data from the four localities and 50 farms were statistically analyzed using measures of central tendency  
190 and dispersion. The model presented was symmetrical. Carmine cochineal is a devastating pest, so the  
191 percentages of areas depleted with forage palm were similar. This condition allowed only one place  
192 instead of the four. The choice of the locality of Boa Vista is due to its tradition in the production of cheese  
193 in the state of Paraíba, almost a century.  
194

195 Calculations and analysis of data, preparation of tables and drawing of figures were done using the Excel  
196 worksheet.  
197

### 198 3. RESULTS AND DISCUSSION

199

200 The cactus species *Opuntia ficus-indica* and *Nopalea cochenillifera* are native to Mexico and are  
201 currently cultivated in the Brazilian semi-arid and other countries. They have various uses, from human  
202 and animal food, medicine, the pharmaceutical industry, production of dyes to soil conservation. In the  
203 semi-arid region of Paraíba, northeastern Brazil, forage palm is used exclusively as ruminant in nature  
204 feed, wasting part of its production potential.

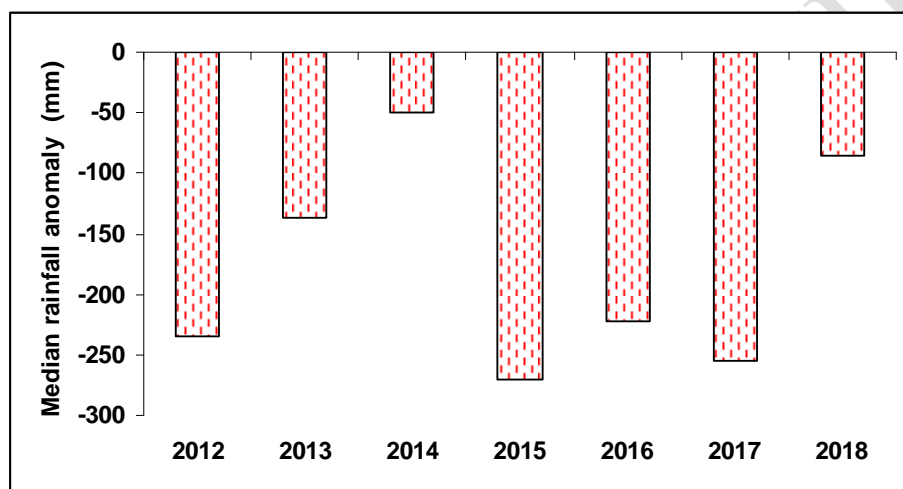
205 The forage palm has high productivity and is consumed in nature by several animal species. Because it is  
206 a drought-tolerant plant, the conditions of the semiarid have been very well adapted. In addition to these  
207 characteristics, it has the metabolism of crassulaceae, which differentiates it by opening the stomata

208 essentially at night, when the ambient temperature is reduced, reducing water losses by  
209 evapotranspiration.

210  
211 **However**, in the semi-arid region of Paraiba, forage palm is the main or only source of food of the herd  
212 (cattle, goats and sheep), mainly during the long dry season. Even in the short rainy season, which lasts,  
213 on average, about three months, native pasture needs to be supplemented with corn or cottonseed meal  
214 in the herd. In addition to these characteristics, forage palm has high biomass productivity and water use  
215 efficiency, which also meets the growing demands of renewable energy sources in the semi-arid.  
216

217 With the advent of the carmine cochineal plague, plantings of the traditional varieties, especially the giant  
218 variety, being the most cultivated, were almost all decimated. **Anywise** the research has been researching  
219 varieties tolerant to this pest. This is, without a doubt, the alternative capable of avoiding not only the rural  
220 exodus, but the sustainable development and the cattle-raising activity, in the northeastern semi-arid  
221 region. There are other challenges in livestock farming; the dependence of the local pluvial regime, being  
222 characterized by the high irregularity in the amount and distribution of rainfall.  
223

224 In this context, the great challenge of livestock breeding in this territorial court is influenced by the rainfall  
225 distribution model, summarized in Fig. 2.  
226



227  
228 Fig. 2. Annual rainfall anomaly medians from four localities of the intermediate geographic region  
229 of Campina Grande, Paraiba, Brazil.  
230

231 This figure summarizes the medians of the annual rainfall anomalies of the four semi-arid Paraiba (Boa  
232 Vista, Boqueirão, Caturité and Pedra Lavrada) plains located in the intermediate geographic region of  
233 Campina Grande, Paraiba, Brazil, since these localities coincide with the main milk basins and,  
234 consequently, with activities of the follow-up of livestock.  
235

236 **As a rule**, the method of analysis of the rainfall anomaly, instead of using only the total amount of rain  
237 observed, is more effective than using the value of rain observed annually, which results corroborate with  
238 those found for semiarid Northeastern by [4]. This rainfall deficit contributes to the absence of native  
239 pasture. Even in this adverse environmental condition, the forage palm resists and is productive. If there  
240 is no pasture, the palm becomes the main or only alternative to feed the herd in the semi-arid region of  
241 Paraiba, that is, the food available in this geographical section and in the other semi-arid localities during  
242 the dry season, results that agree with those found by [3], [7] and [9].

243  
244 **Moreover**, the territorial cut of Boa Vista, Paraiba, Brazil, is recognized for its main cattle activity which is  
245 famous artisanal rennet cheese. The area cultivated with forage palm is around 33 thousand hectares,  
246 distributed in 532 rural properties. Since it is a reference municipality in the State of Paraiba, of this cattle  
247 activity, the majority of the results refer to this locality, avoiding, therefore, the repetition of the social and  
248 productive indicators of the forage palm for each place.

249 Fig. 3 shows the numbers of animals (cattle, goats and sheep) between 2006 and 2017 for this  
250 municipality, similar to those of other localities.

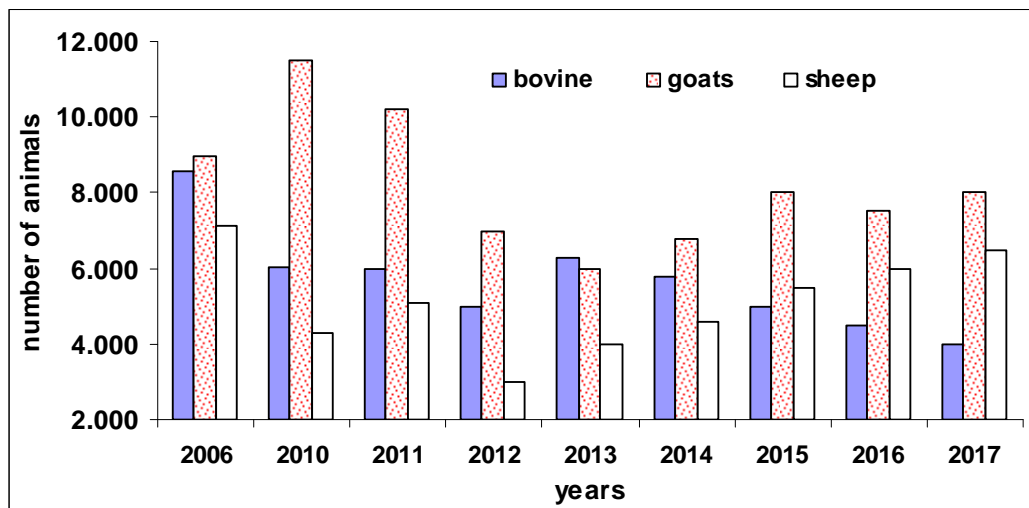


Fig. 3. Number of animals (cattle, goats and sheep) in the municipality of Boa Vista, Paraíba, Brazil.

In the general context, it is believed that the reduction of the herd (bovine, sheep and goat) can be explained by the difficulty of feeding it by demanding a lot of fodder, industrialized ration and water. As the cost of goats and sheep is lower and a little easier to cope with the droughts, it justifies in part the smaller reductions when compared to cattle.

The gradual reduction of the herd (Fig. 3), as of 2011, can be explained by the rainfall deficit and lack of forage palm to feed the herd, given the incidence of carmine cochineal, which has been decimating drastically, the traditional palm plantations in the semi-arid region of northeastern Brazil, reached the palm plantations of these four locations. Without palm and with drought, the alternative was to dispose of the herd. These results are not restricted to these sites, but are confirmed for other sites in the semi-arid state of Bahia, for example, by [23].

Livestock farms in the semi-arid region of Paraíba are primarily activities carried out within the household, that is, small producers. Fig. 4 summarizes the relative frequency of farm size in hectares.

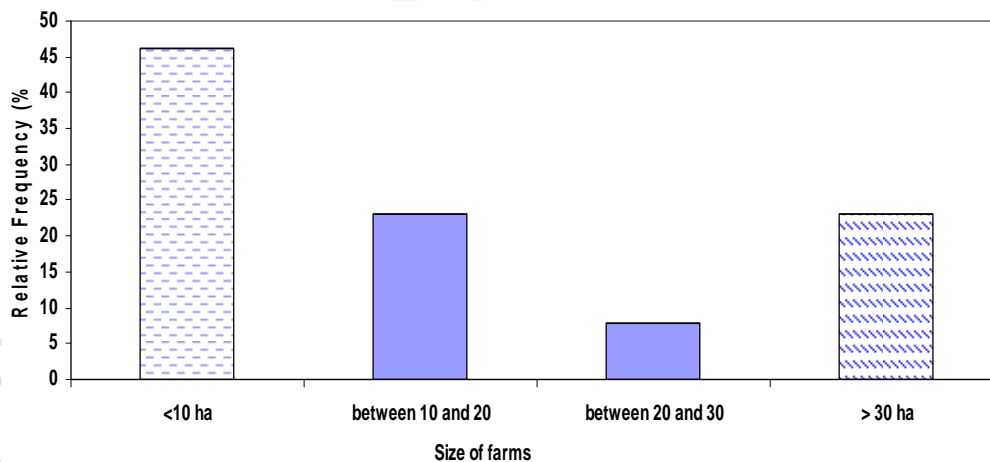


Fig. 4. Relative frequency of the size of farms with forage palm. Boa Vista, Paraíba, Brazil

Fig. 4 summarizes the relative frequency of farm size in hectares. The extract from farm areas shows that 46.2% of the rural properties are less than 10 hectares and about 70.0% do not exceed 20 hectares. It is an activity predominantly of small producers. The sizes of the properties agree with those found by [5] for other locations in the semi-arid region of Paraíba, such as those in the Boqueirão and Caturité dairy basins.

With regard to the rural exodus, it seems that there is a rapid reduction of traditional family participation (parents with children), as well as the average size of Brazilian families. Rural young people continue to migrate and it is an important part, numerically, socially and economically, as shown in Fig. 5.

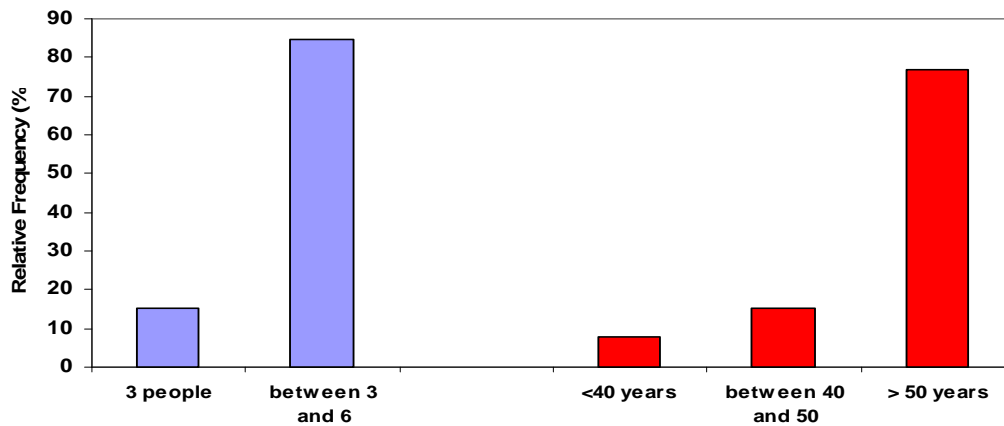


Fig. 5. Relative frequency of family size and age group. Boa Vista, Paraíba, Brazil

As illustrated in figure 4, the size of the families in 86.4% is from three to six people and only 13.6% of the farms are made up of up to three people. Regarding the age group, the age of the head of the family with more than 50 years old was predominant and less than 40 years was less than 8.0% and demonstrates, therefore, that this rural activity (livestock) is being developed, preferably, by older people and rural youths do not seem to identify with the profession of farmer and therefore migrate to cities.

These results are similar to those found by [5], in other places in Paraíba, where 60% of respondents were over 50 years of age or even in the State of Parana, in southern Brazil, by [22] shows that 13, 4% of young people aged 15-29 reside in rural areas, that is, the demographic dynamics of rural emptying. This dynamic, in other Brazilian states, is not only associated with the advance of mechanized agriculture, but with the consolidation of family agriculture.

The educational levels of the rural population tend to be lower than those of the cities and the illiteracy rate is much higher. It agrees with the results found by [24] the level of schooling is an important determinant of the rural exodus and education is essential for the formation of human and social capital.

### 3.1 The importance of forage palm in feeding ruminants and carmine cochineal.

Mostly, the ranchers of the farms studied have the forage palm as the main or only source to feed the herd. Most breeders use palms to feed the herd, but as they cut the palms, they replant, maintaining almost the same area planted over the years, that is, withdrawal cycles followed by planting.

Livestock farming is done by smallholders, with a maximum income of around \$ 250, and therefore they have financial difficulty to expand and/or even maintain their property. In the current scenario, Fig. 6 summarizes the situation of the traditional cultivation of the palm tree (giant cultivar), that is, before the appearance of carmine cochineal around 2010/2011.

It is observed (Fig. 6) that 61.6% of the sizes of the areas planted with palm are equal to or less than 5 hectares; 30.8% are between 5 and 10 ha and only 7.8% exceed 10 ha. It should be noted, however, that these areas existed traditional forage palm plantations, but were totally or partially decimated by carmine cochineal. These results are fully in agreement with those found in most of the other northeastern states by [5] and [15].

As most farms are small producers and low-income farmers, they do not have the economic conditions to replace traditional planting with varieties tolerant to this pest. The sequence of years with drought (Fig. 2) does not contribute to the formation of native pasture and, therefore, the alternative to feed the herd is the forage palm, combined with industrialized rations of cotton and corn.

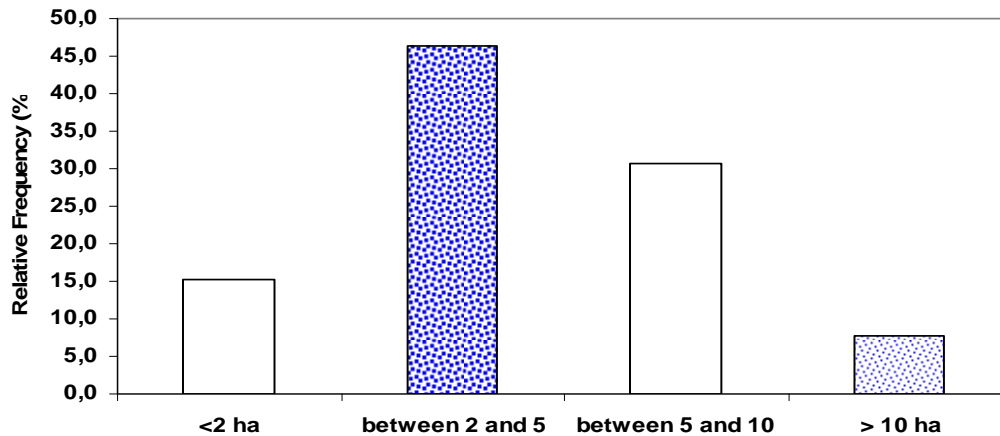


Fig. 6. Relative frequency of the traditional forage palm area (giant cultivar), before the carmine cochineal. Boa Vista, Paraiba, Brazil.

The high percentages of devastation of the traditional forage palm (Fig. 7), in a geographic cut, in Boa Vista, Paraiba, Brazil, after the arrival of the carmine cochineal, are similar to the other areas of the Brazilian northeast, where the forage palm is the main food of the herd.

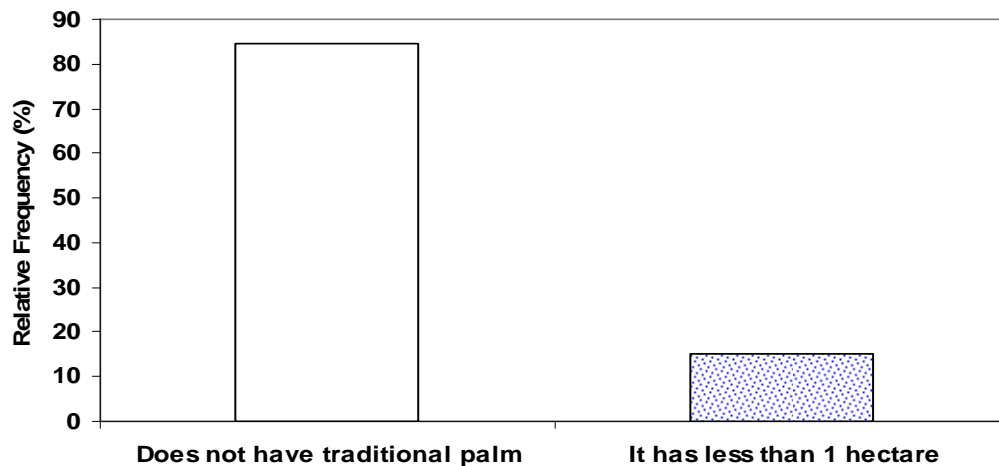


Fig. 7. Relative frequency of the producers that still have the traditional palm (giant cultivar). Boa Vista, Paraiba, Brazil.

It is important to note that, before the arrival of the carmine cochineal, around 2001, the northeastern semi-arid region had the largest cultivated area of forage palm in Brazil (about 500 thousand hectares). With the incidence of this pest, this area was reduced to less than half. As the forage palm is the main or only source of food, especially during the dry season, it will be very difficult to feed the whole herd. These results coincide with those found elsewhere in the same micro region or northeast region by other authors [5], [8], [9] and [20] who claim that carmine cochineal is a potentially devastating pest.

Scalps are insects that feed on the sap of plants. Usually they associate by forming groups of several individuals that are called colonies, and carmine cochineal is thus named because it is the raw material of the carmine dye that is produced from female cochineal of that species.

The pest has been decimating the palms in several places in the northeastern semi-arid region, and especially those in the semiarid dairy basins of Paraiba, one of the driest micro regions in this state, where the palm is the main and/or only alternative to feed the herd and, therefore, responsible for the development of livestock.

The carmine cochineal is one of several species of the genus *Dactylopius* that produce the carmine dye. In the feeding process, the mealy bugs suck the palm racquets inoculating toxins, which results in the weakening of the plants, causing the yellowing and the fall of the cladodes (Fig. 8)





Fig. 8. View of forested palm rackets attacked with cochineal carmine.

351  
352  
353  
354  
355  
356  
357  
358  
359  
360  
361  
362  
363  
364  
365  
366  
367  
368  
369  
370  
371  
372  
373  
374  
375  
376  
377  
378  
379  
380  
381  
382  
383  
384  
385  
386  
387  
388  
389  
390  
391  
392  
393  
394  
395

Scalps are insects that feed on the sap of plants. Usually they associate by forming groups of several individuals that are called colonies. Carmine cochineal is thus named because it is the raw material of the carmine dye that is produced from female cochineal of that species

**cochineal carmine** has been decimating the palms in several places in the northeastern semi-arid region, and especially those in the semiarid dairy basins of Paraíba, one of the driest micro regions in this state, where the palm is the main and / or only alternative to feed the herd and, therefore, responsible for the development of livestock

Scallops also excrete a sugary substance that favors the attack of fungi and also attracts ants. Attacked rackets turn yellow and then die. Therefore, production losses can be total, making livestock in the affected regions unfeasible, which agrees with the results of [23]

Without the traditional forage palm, the solution was the partial or total sale of the herd. The cattle ranchers who persist in continuing the livestock activity, the alternative is to revitalize areas decimated by carmine cochineal, with clones resistant to this pest.

**The** program has contributed gradually and slowly, revitalizing with more productive cultivars and those of better nutritive value, such as the varieties Miúda (*Nopalea cochinillifera*) and Ear of Elephant (*Opuntia sp.*), have been the most promising. This alternative technology has been the only hope for the maintenance of livestock, goat breeding and sheep farming that are the basis for the sustainable development of the semi-arid Paraíba.

As small producers have low purchasing power, the replacements of areas decimated by carmine cochineal by varieties tolerant to this parakeet have been occurring slowly.

The other major challenge of livestock activity in the studied geographic area and in the northeastern semi-arid region is irregularities in the quantity and distribution of rainfall. With this pluvial regime it does not favor the formation of native pasture or other forage. Therefore, forage palm will continue being the main or only alternative of the cattle activity in this geographic micro region.

#### 4. CONCLUSION

The irregularity in the rainfall regime in the semi-arid state of Paraíba, Brazil, does not favor the formation of native pasture, especially during the long dry season. For this condition, forage palm (*Opuntia ficus indica Mill*) is the main or only source of food for cattle, goats and sheep.

Forage palm is an important alternative to for the cultivation and animal feed in semi-arid conditions due to its high dry matter, good dry matter yield and to good nutritional value. However, with the incidence of carmine cochineal (*Dactylopius opuntiae*), in this geographic cut, the alternative is revitalization with resistant cultivars of carmine cochineal.

396 In the northeastern semi-arid, the carmine cochineal has already decimated almost all the plantations of  
397 the traditional forage palm (giant variety). If it does not have this forage, the only alternative of the  
398 producer is to reduce the herd and, consequently, the cattle activity.  
399

400 **At all events**, under the conditions of the Paraíba semi-arid, the palm is the only forage that resists and  
401 produces great amount of dry matter, even during the dry period.  
402

403 The program of revitalization of the traditional palm cultivation, by varieties resistant to carmine cochineal,  
404 has been made slowly, the option and by clones of the varieties Miúda and Ear of Mexican Elephant. The  
405 acceptance and the animal digestibility are very good.  
406

407 The cattlemen are convinced that the solution is to revitalize with carmine-resistant cochineal material.  
408 However, there is a need for studies on the production of this fodder and the water needs, in order to  
409 guarantee the continuity of the cattle raising activity.  
410

## 411 REFERENCES

412 1. NOBEL, P. S. Ecophysiology of *Opuntia ficus-indica*. In: Mondragón-Jacobo, C., PérezGonzalez, S.  
413 (Eds.), *Cactus (Opuntia spp.) as Forage Plant Production and Protection*, Paper 169. FAO, Rome (Italy),  
414 pp. 13–20, 2001.

415 2. REYES-AGÜERO, J. A., AGUIRRE-RIVERA, J.R., HERNÁNDEZ, H.M. Systematic notes and a  
416 detailed description of *Opuntia ficus indica* (L.) Mill. (CACTACEAE). *Agrociencia*, v.39, p.395–408, 2005.

417 3. ADLI, B., BOUTEKRABT, A., TOUATI, M., BAKRIA, T., TOUATI, A., BEZINIM E. Phenotypic diversity  
418 of *Opuntia ficus indica* (L.) MILL. in the Algerian steppe. *South African Journal of Botany*, v.109, p.66–74,  
419 2017.

420 4. ALMEIDA, H. A. de. *Climate, water and sustainable development in the semi-arid of northeastern*  
421 *Brazil*. In: *Sustainable water management in the tropics and subtropics and case studies in Brazil*,  
422 Unikaseel, Alemanha, v.3, p.271-298, 2012.  
423

424 5. ALMEIDA, H. A. de, PINTO, I. O., SANTOS NETO, J. A. Diagnosis and alternative of the revitalization  
425 of spineless cactus in semi-arid of the state of Paraíba. *Braz. Ap. Sci. Rev.*, v. 2, n. 4, p. 1346-1359,  
426 2018.

427 6. HOFFMANN, W. Ethnobotany. In: *Agroecology, cultivation and uses of forage palm*. Roma: FAO,  
428 *Production and Plant Protection*, 1995. Translation (SEBRAE / PB), Paper 132, p.12-14, 1995.

429 7. SOUZA, V. C., LORENZI, H. Systematic botany: illustrated guide for identification of Angiosperm  
430 families of the Brazilian flora, based on APG II. Nova Odessa, SP: Instituto Plantarum, 2005. 640p

431 8. SILVA, C. C. F., SANTOS, L. C. Forage palm (*Opuntia ficus-indica* Mill) as an alternative in the feeding  
432 of ruminants. *REDVET Veterinary Electronic Magazine*. 8 (05): 1-11, 2007.

433 9. SILVA, N. G.M., LIRA, M. A., SANTOS, M. V. F., JÚNIOR, J. C. D, MELLO, A, C. L., SILVA, M. C.  
434 Relation between morphological and productive characteristics of forage palm clones. *Revista Brasileira*  
435 *de Zootecnia*, v.39, n.11, p.2389-2397, 2010.

436 10. ARAÚJO, L., OLIVEIRA, L. de S. C., PERAZZO NETO, A., ALSINA, O.L.S., SILVA, F. L. H.  
437 Hygroscopic equilibrium of forage palm: Relation with the optimal humidity for solid fermentation.  
438 *Brazilian Journal of Agricultural and Environmental Engineering*, v.9, n. 3, p. 379-384, 2005.

439 11. NUNES, C. S. Uses and applications of forage palm as a great source of economics for the  
440 northeastern semi-arid region. *Green Magazine*. v.6, n.1, p.58-66, 2011.

441 12. BARBERA, G. Agroecology, cultivation and uses of forage palm. FAO study on plant production and  
442 protection. United Nations Organization, Rome, 1999. p.1-6, 2001.

443 13. CHIACCHIO, F. B., MESQUITA, A. S., SANTOS, J. R. Forage palm: an economic opportunity still  
444 wasted for the semi-arid region of Bahia. *Bahia Agricola*, v.7, n.3, p.39-49, 2006.

- 445 14. CANDIDAL, M. J., GOMES, G. M. F., LOPES, M. N., XIMENES, L. J. F. Fodder palm cultivation to  
446 mitigate forage scarcity in semi-arid regions. Rural Etene Report. 7 (3): 1-7, 2013.
- 447 15. ALMEIDA, A. A., SILVA, R.A., ARAÚJO, W. L., OLIVEIRA, A.V.B., LEITE, D.T. Phytosanitary  
448 problems caused by Cochineal of Carmine the forage palm in Western Cariri Paraibano. Green Magazine  
449 on Agroecology and Sustainable Development. 6 (3): 98-108, 2011.
- 450 16. CAVALCANTI, V. A. L. B., SENA, R. C., COUTINHO, J. L.B, ARRUDA, G; RODRIGUES, F.B. Control  
451 of the fodder palm meal. Recife: IPA, 2001, 2p (IPA Respond, n.39), p.1-2, 2001.
- 452 17. LOPES, E. B. Forage palm: cultivation, current use and prospects of use in the northeastern semi-  
453 arid region. João Pessoa: EMEPA / FAEPA, 2007. 130p
- 454 18. SANTOS, D.C., FARIAS, I., LIRA, M.A, SANTOS, M. V. F., ARRUDA, G. P., COELHO, R. S. B.,  
455 DIAS, F. M., MELO, J. Management and use of forage palm (Opuntia and Nopalea) in Pernambuco,  
456 Brazil Recife: IPA, 2006. 48 p. (IPA, Documents, 30
- 457 19. PERSON, A. S. Culture of forage palm. Recife: SUDENE. Division of Documentation, 1967. 98p.  
458 (SUDENE, Agriculture, 5).
- 459 20. LOPES, E. B (Org.). Forage palm: cultivation, current use and prospects of use in the northeastern  
460 semi-arid region. João Pessoa: EMEPA-PB, 2012.
- 461 21. CAVALCANTI, M. C .A., BATISTA, A. M. V., GUIM, A., LIRA, M. A., RIBEIRO, V. L., RIBEIRO NETO,  
462 A.C. The consumption and ingestive behavior of goats and sheep fed with giant palm (Opuntia ficus-  
463 indica, Mill) and elephant ear palm (Opuntia sp.). Acta Scientiarum Animal Science, 30: 173-179, 2008.
- 464 22. Brazilian Institute of Geography and Statistics (IBGE). Regional division of Brazil in immediate  
465 geographic regions and intermediate geographical regions: IBGE, Coordination of Geography. Rio de  
466 Janeiro: IBGE, 2017, 87 p.
- 467 23. MENDONÇA, J. O. Drought in Bahia: losses in the agricultural sector (2012-2016). Conjuncture and  
468 Planning, n.192, p.91-109, 2017.  
469
- 470 24. MAIA, A. G., BUAINAIN, A. M. The new map of the rural population Brazilian. Confins, n. 25, p. 1-26,  
471 2015.  
472
- 473 25. LOPES, E. B .; SANTOS, D. C .; VASCONCELOS, M. F. Cultivation of forage palm. In: LOPES, E.D.  
474 (Org.) Forage palm: cultivation, current use and prospects of use in the northeastern semi-arid region,  
475 João Pessoa: EMEPA, 2012. p. 21-60, 2012.