

PREVALENCE OF INTESTINAL PARASITIC INFECTIONS AMONG PATIENTS ATTENDING USMANU DANFODIYO UNIVERSITY TEACHING HOSPITAL, SOKOTO, NIGERIA

ABSTRACT

Background: Intestinal parasitic infection is one of the major health issue in developing countries particularly in Sub-Saharan Africa. It has been estimated to affect about 3.5 billion people globally and 450 million people are thought to be ill as a result of such infections, the majority being children.

Aims: The study **was** aimed at determining the prevalence and associated risk factors of intestinal parasitic infections among patients attending Usmanu Danfodiyo University Teaching Hospital, Sokoto, Nigeria.

Study Design: This was a cross-sectional, descriptive study.

Place and Duration of Study: This study was conducted among patients attending Usmanu Danfodiyo University, Teaching Hospital, Sokoto, Sokoto state, between May to November 2017.

Methodology: A total of 245 participants were enrolled in the study. Standard parasitological examination was carried out on stool samples using microscopic examination.

Results: Finding revealed that 29 (11.8%) were positive for intestinal parasitic infections. Males recorded higher prevalence than the females with 19 (11.9%) and 10 (11.7%), respectively.

Conclusion: Low level of education, occupational status, poor water supply were among the significant risk factors for these infections. Prevalence and intensity of parasitic infections among the study community could be reduce by Creating awareness, level of sanitation, water supply and deworming programme among school children.

Keywords: Prevalence study, Intestinal parasitic infection, UDUTH, Sokoto State, Nigeria.

1.0 INTRODUCTION

Intestinal parasitic infection is one of the major public health burdens in developing countries particularly in Sub-Saharan Africa. It has been found to affect about 3.5 billion people globally and 450 million people are thought to be ill as a result of such infections, the majority being children [1]. In Nigeria, intestinal helminthes infections have continued to prevail because of poor standards of living, poor environmental sanitation and ignorance of simple health promoting behaviours[2,3].Intestinal

36 helminthes infections are most common in school age children and they tend to occur in high intensity
37 in this age group [4,5,6].

38 .

39 These infections have been associated with an increased risk for nutritional anaemias, protein energy
40 malnutrition, growth deficits in children, physical weakness and low educational performance of
41 school children [7,8] and also causing high morbidity and mortality rate [9].

42 Parasitic infections are governed by behavioural factors, biological, environmental, socioeconomic
43 and health systems factors. Local conditions such as quality of domestic and village infrastructure;
44 economic factors such as monthly income, employment and occupation and social factors such as
45 education influence the risk of infection, disease transmission and associated morbidity and mortality
46 [10,11]. These infections are more prevalent among the poor segments of the population. They are
47 closely associated with low household income, poor personal and environmental sanitation, and
48 overcrowding, limited access to clean water, tropical climate and low altitude. Intestinal parasitic
49 infections such as amoebiasis, ascariasis, hookworm infection and trichiuriasis are among the ten
50 most common infections in the world [12].

51 There is dearth of information on the magnitude of intestinal parasitic infections and predictors among
52 patients attending Usmanu Danfodiyo University Teaching Hospital, Sokoto, Nigeria. Information
53 generated could be used for planning public health control programmes which is an important step for
54 initiation of treatment and prevention strategies as well as reducing morbidity and mortality due to
55 parasitic infections in the area.

56 **MATERIALS AND METHODS**

57 **STUDY AREA**

58 The study area was Usmanu Danfodiyo University Teaching Hospital, a tertiary health facility located
59 in Sokoto metropolis, the Sokoto State Capital. It serves as a referral centre for more than 10 million
60 people of the Nigerian States of Sokoto, Zamfara and Kebbi; and neighbouring Niger and Benin
61 Republic in the West African sub-region [13].

62 Sokoto State is located at the extreme part of North-Western Nigeria between longitude 3° and 7°
63 east and between latitude 10° and 14° north of the equator. It shares borders with Niger-Republic to
64 the North, Kebbi State to the South-West and Zamfara State to the East [13]. The state covers a total
65 land area of about 32,000 square kilometres and a population of 4,602,298 million based on 2013
66 projection [14]. Sokoto State has semi-arid climate and vegetation is largely Sudan Savannah with an
67 annual rainfall between 500 – 1300mm and temperature ranges between 150°C and over 400°C
68 during warm days [13].

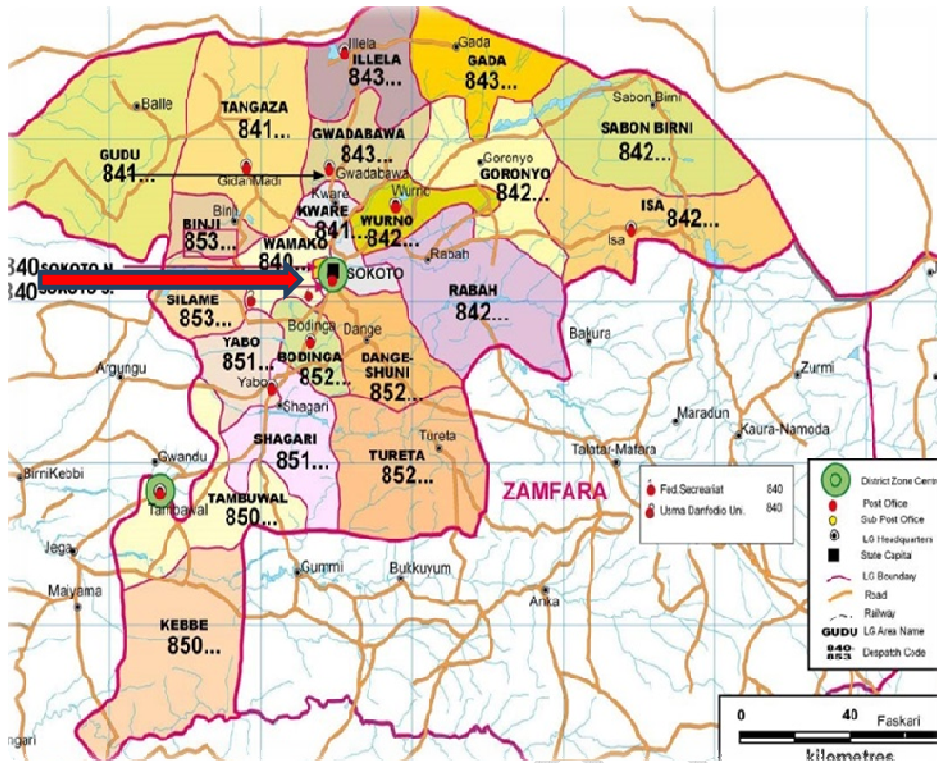


Figure 1: Map of Sokoto State Showing Study Area [13].

72 STUDY DESIGN

73 This is a cross-sectional descriptive study that was carried out on 245 samples collected from UDUTH
74 Service laboratory, from May to November 2017.

75 SUBJECT AND SELECTION

76 A systematic random sampling was used to select or recruit the subjects or respondents

77 Inclusion criteria:

78 1. All patients with uncontaminated stool sample (formed, semi formed and unformed) were
79 recruited for study and

80 2. Patients who give their consent to participate in the study.

81 Exclusion criteria:

82 1. Patients that did not meet inclusion criteria were excluded from the study and

83 2. Patients who refuse to give consent in the study.

84 SAMPLE SIZE

85 The sample size was calculated using the formula outlined below [15]. Prevalence was set
86 at 17.5% [16].

87
$$n = \frac{(z-a)^2 (p) (1-p)}{d^2}$$

88
$$d^2$$

89
$$n = 221$$

90 Using an attrition rate of 10%, a total of 243 patients were selected

91 SAMPLING METHOD

92 A systematic sampling method was used to recruit all patients that meet the inclusion criteria.

93 The laboratory register had about six hundred patients (600) that submitted their stool for evaluation
94 in the previous year (January 2016 to December 2017). This was used to determine the sampling
95 frame.

96
$$K=N/n: 600/245 = 2.4 \sim 3$$

97 A sampling interval of 3 was achieved.

98 Using simple random sampling; the first patient was chosen between number 1 and 3 for the first
99 week of study.

100 For any randomly chosen numbered patient; thereafter a sampling interval of 3 would be used for the
101 subsequent patients that present themselves at the facility until the sample size was achieved.

102

103 SAMPLE COLLECTION

104 An approximate amount of 100g faeces was collected into clean, dry and screw cap, leak proof
105 containers.

106 **STUDY TOOL**

107 A structured questionnaire was administered to obtain patient information. It was structured into the
108 following subheadings; demographic information, socio-economic data, clinical history and laboratory
109 investigation. The questionnaire was pretested and validated at a similar site to the study area in the
110 state specialist hospital, Sokoto and corrections were made where necessary.

111 **SAMPLE PROCESSING**

112 The stool specimen was examined macroscopically for the presence of adult worms. The consistency,
113 color and presence of abnormal structures were recorded. It was also examined microscopically using
114 direct saline and wet iodine mount, and also formal-ether concentration method.
115

116 **DIRECT MICROSCOPIC EXAMINATION USING NORMAL SALINE AND IODINE** 117 **PREPARATION**

118 For each sample, normal saline mount and iodine mount was prepared on a slide and examined
119 microscopically at 10X and 40X for the presence of *Intestinal helminths*. . Iodine preparation allows the
120 examination of the characteristics features of the protozoa and the identification of the *Entamoeba*
121 *histolytica/dispar* (*Entamoeba histolytica/dispar*) cyst from the commensal *Entamoeba coli*. [17]
122

123 **FORMALIN-ETHER SEDIMENTATION METHOD**

124 0.5g of faecal sample was added to a glass container containing 10mls of 10% formalin and then
125 mixed thoroughly. A Funnel was placed on a gauge and strain into a 15mls centrifuge tube and
126 centrifuged for 2minutes at 1500 rpm. Then the supernatant was discarded and the sediment was re-
127 suspended into 10mls of physiological saline, and centrifuged for 2 minutes at 1500 rpm. The
128 supernatant was discarded and the sediment re-suspended again in 7mls of 10% formaldehyde, 3mls
129 of ether (diethyl) was also added. The tube was closed with a glass stopper and mixed vigorously,
130 and then the stopper was removed and centrifuged for 2minutes at 1500 rpm. The supernatant was
131 poured out and the sediment carefully placed on a clean glass slide and covered with cover slip and
132 this was examined at x10 and x40 magnification on a light microscope [19].

133 **DATA MANAGEMENT**

134 Data were entered independently at two separate occasions using Microsoft Excel 2016. Double data
135 entry analysis was done to ensure data quality. **Statistical package** for social sciences (SPSS) version
136 20 was used for the analysis. Categorical variable was assessed using Chi-square test to determine
137 the association. Simple and multiple logistic regression analysis was used to determine associated
138 risk factors of the infections. Values were considered statistically significant at $p < 0.05$.

139 **ETHICAL COSIDERATION**

140 Ethical clearance was obtained from the ethics and research committee of UDUTH, Sokoto and
141 consent was sought from the participants prior to sample collection.

142

143

144 **RESULT**

The prevalence of intestinal parasites among the overall population studied was 11.8%. The highest prevalence of 6.2% was noted for Hookworm and *Ascaris lumbricoides* infection while the lowest prevalence was seen with *H. nana* (2.0%) as shown in Table 1. Of the total study subjects 160 (65.3%) were males and 85 (34.7%) were females. The males showed a higher prevalence of intestinal parasite infections of 11.9% (Table 2) than the females which showed a prevalence rate of (11.8%). However, this difference was not statistically significant ($p>0.05$). The age range (Table 3) of 11-15 had the highest prevalence of parasitic infection with 2.9% and none was recorded among the age group 31 and above. There was a statistically significant difference of worm of infestation among age groups ($p=0.004$).

Prevalence of intestinal parasitic infection among study population based on water source shows that those that consume river/stream water 13 (5.3%) have highest risk of intestinal parasitic infection, followed by those that drink other source of water with prevalence of 8 (3.3%) then followed by those that drink well water with 4 (1.6%), Tap water 3 (1.2) and lastly those that consumed sachet water have the lowest prevalence of 1 (0.4%). Comparing the different prevalence rates in relation to intestinal parasites by water source is statistically significant ($p=0.001$).

The distribution of intestinal parasitic infection among study population based on frequency of eating vegetables, walking bare footed, type of toilet facility, occupation, educational level etc. are shown in Table 4.

Table 1: Prevalence of intestinal parasitic Infection

Parasites	Frequency (n=245)	Prevalence (%)
<i>Hook worm and Ascaris Lumbricoides</i>	15	6.1
<i>G. lamblia and Entamoeba. histolytica</i>	9	3.7
<i>H. nana</i>	5	2.0
Total	29	11.8

TABLE 2: Showing Prevalence in relation to gender.

Gender	No examined (%)	Intestinal Parasites		p-value
		Infected (%)	Not Infected (%)	
Male	160 (65.3)	19 (11.9)	141(57.6)	0.413
Female	85 (34.7)	10(11.7)	75 (30.6)	
Total	245	29	216	

TABLE 3: Showing prevalence in relation to age distribution

Ages	No examined (%)	Intestinal parasites		p-value
		Infected (%)	Not Infected (%)	
0-5	33(13.5)	5(15.2)	28(11.4)	0.004*
6-10	19(7.8)	4(21.0)	15(6.1)	
11-15	19(7.8)	7(36.8)	12(4.9)	
16-20	57(23.3)	6(10.5)	51(20.8)	
21-25	83(33.9)	5(6.0)	78(31.8)	
26-30	13(5.3)	2(15.4)	11(4.5)	
≥ 31	21(8.6)	0(0.0)	21(8.6)	
Total	245	29	216	

Table 4: Showing Distribution of intestinal parasitic infection among study population with respect to some sociodemographic characteristics.

Variables	Intestinal parasites				Total	<i>p</i> -value ^a
	Infected		Not infected			
	n	%	n	%		
Educational status						
None	7	(2.9)	77	(11.0)	84	0.021 *
Informal	2	(0.8)	14	(7.0)	16	
Primary	3	(1.2)	27	(9.0)	30	
Secondary	11	(4.5)	29	(2.64)	40	
Tertiary	6	(2.4)	69	(11.5)	75	
Occupation						
Business	3	(1.2)	23	(7.6)	26	0.905
Farming	1	(0.4)	14	(14.0)	15	
Civil servant	7	(2.9)	40	(5.7)	47	
Unemployed	4	(1.6)	37	(9.3)	41	
Student	14	(5.7)	102	(7.3)	116	
Water source						
Tap water	3	(1.2)	59	(19.6)	62	0.001 *
Well water	4	(1.6)	33	(8.3)	37	
River/stream	13	(5.3)	36	(14.7)	49	
Sachet water	1	(0.4)	73	(2.7)	74	
Others	8	(3.3)	15	(1.8)	23	
Frequency of eating vegetables						
Frequent	11	(4.5)	57	(5.2)	68	0.201
Not frequent	18	(7.3)	145	(8.1)	163	
Not at all	0	(0.00)	14	(5.7)	14	
Do you walk bare foot						
Yes	25	(10.2)	155	(6.2)	180	0.098
No	4	(1.6)	61	(15.3)	65	
Do you wash your hand						
Yes	8	(3.3)	42	(5.3)	50	0.307
NO	21	(8.6)	174	(8.3)	195	
Type of toilet facility						
Pit latrine	9	(3.7)	48	(5.3)	57	0.379
Bucket latrine	6	(2.4)	39	(6.5)	45	
Open space	2	(0.8)	41	(20.5)	43	
Water System	12	(4.9)	88	(7.3)	100	

201 Key: a = Pearson chi-square test, n = Number of parasites, * = statistically significant

5.1 DISCUSSION

This study reveals a parasitic prevalence rate of 11.8% among 245 patients attending the Usmanu Danfodiyo University Sokoto Teaching Hospital, which were selected at random from May to November, 2017.

The low prevalence of intestinal parasites in this study is in line with the study observed in North western Nigeria of 15.67% by [19] and 12% in South India by [20]. However, the results are considerably lower than studies reported in North western Nigeria by [21], North central Nigeria by [22], western Tajikistan by [23] and North eastern Ethiopia by [24]. The lower prevalence might be due to improved environmental sanitation, better knowledge of personnel health and hygiene, and educational status of the subjects found in the study area.

The present study revealed that males were a little more susceptible to infection (11.9%) than the females (11.7%). This finding was found to be similar with that reported by [26]. This might be due to the common feeding pattern in which a great number of men eat outside their homes while on daily activities to earn a living. And also due to the contamination of soil by human faeces, use of raw sewage for agricultural purposes; use of waste water irrigated vegetables and contaminated imported vegetables [27].

Prevalence is not dependent on sex among the sampled population which disagrees with the work of [26] who observed a higher prevalence of intestinal parasite in females than in males. And the work is in contrast with that of [28], who reported that male was found to have higher prevalence rate in a study carried out in North western Ethiopia.

However, 11-15 years aged group and 16-20 years had a highest prevalence of 36.8% and 10.5% respectively. This finding was found to be similar with that reported by [21, 29]. This study is also similar to the work of [30], who reported highest prevalence in the ages 9-10 years among children [30]. Even though WHO confirmed that intestinal protozoan parasite (IPP) are dependent on age and greater severity of the infection is found in the younger children [31]. This could be attributed to the different host responses and other related factors such as nutritional status [32].

The most common intestinal parasitic infection identified in the community include amongst others *H. nana*, *Ascaris lumbricoides*, *G. lamblia*, *E. histolytica* and Hookworm specie. However Hookworm and *A. lumbricoides* recorded the highest prevalence of 15 (6.1%) followed by *G. lamblia* and *E. histolytica* 9 (3.7%) and *H. nana* recorded the least prevalence of 5 (2.0%). This finding was similar to those reported in Ethiopia [28], and in contrast with the study in Nigeria [33].

In this study, occupation, type of toilet facility and frequency eating of vegetables were not significantly associated with intestinal parasitic infections. However, according to the study conducted by [34] and [35], they were strongly associated with infections. This is more likely due to high level of education, better sanitation condition, better knowledge about the faeco-oral transmission of intestinal parasite through their unwashed hands and the contamination of vegetables with faecal materials in the farm. Season could be another important predictor of intestinal parasitic infections especially during rainy season where agricultural activities is said to be highest. This finding is in agreement with the findings of other researchers that indicated seasonal variations contributed to the higher prevalence of the disease [36, 37].

5.2 CONCLUSION

This present study revealed that there is low prevalence of intestinal parasitic infection among patients attending Usmanu Danfodiyo University Teaching Hospital, Sokoto.

The different potential risk factors assessed in the study include occupation, educational status, water source, and type of toilet facility. Water source and educational status were strongly associated with

intestinal parasitic infection. However, the low prevalence of infection might be attributed to proper management of organic refuse, public health enlightenment about the risk of intestinal parasitic infections, adequate supply of clean water and proper drainage among the study participants.

Therefore, all stakeholders should give attention to raising awareness about control of intestinal parasitic infection, personal and environmental hygiene, and improving the quality of drinking water source.

ETHICAL COSIDERATION AND CONSENT

Ethical clearance was obtained from the ethics and research committee of UDUTH, Sokoto and consent was sought from the participants prior to sample collection.

REFERENCES

[1] WHO (2000). Conquering Suffering Enriching humanity. World Health Organisation: Geneva.

[2] Nwosu ABC. The community of soil transmitted helminth infection of humans in a hyper-endemic area of southern Nigeria. *Annals Trop Med Parasite*, 1981; **75**:197-203.

[3] Udonsu, J. K. Necator americanus: a cross-sectional study of rural community in relay to some clinical signs. *Annal. Trop. Med. Parasitol*. 1984; **78**:443-445.

[4] Albonico, M. Wright, V. Jape, K. Haji, H. J. Taylor, M. Savioli, L. Bickle, O. Soil transmitted nematode infections and mebendazole treatment in Mafia Island School children. *Annal Trop Med Parasitol*, 2002 **96**:717-726.

[5] Alvañiz AFA, de Castro EC, Tablizo BJB, Flores MJC, Maghirang ESV, Esmeli LAR, Pacificador AY, Sumalapao DEP. Prevalence, physiologic effects, and risk factors of soil-transmitted helminth infections among grade school children. *National Journal of Physiology, Pharmacy and Pharmacology*. 2017; 7(9):907-913.

[6] Flores MJC, Bautista YM, Carandang LGE, Go KM, Olalia MBIT, Maghirang ESV, De Peralta AS, Esmeli LAR, Sumalapao DEP. Risk factors associated with intestinal parasitic infections among school children. *Annual Research & Review in Biology*. 2018; 24(4):1-6.

[7] Nokes, C. S. M. Grantham-Mcgregor, A.W. Sawyer, E.S. Loofer. D.A.P Bundy. Parasitic helminthic infection and cognitive function in school children. 1992

[8] Nokes, C. Bundy, DAP. Does helminth infection affect mental processing and educational achievement? *Parasitol Today*. 1994; **10**:(14-18).

[9] Sackey, M. E. Weigel, M. M. Armijos, R. X. (2003). Predictors and nutritional consequences of intestinal parasitic infections in rural Ecuadorian children. *J. Trop. Pediatr*. **49**: 17-23.

[10] Yakubu, N. Musa, G. Yakubu, S. E. Seasonal changes in the distrinution and infection rate of Schistosoma intermediate hosts in River Kubanni and its tributaries. *Bio Res Com* 2003; **15**:207-214.

[11] Wang, K. Tang, D. Wang, M. Lu, J. Yu, H. Liu, J. *Journal of cell science* 2009; 122(Pt12):20556

[12] WHO. Report Series 749: Prevention and control of intestinal parasitic infections. Geneva: WHO; 1987.

[13] Sokoto State Business Directory (SSBD). A Publication of the Commerce Department, Ministry of Commerce, Industry and Tourism, Sokoto. 2007; Pp 14-18.

- 286 [14] UNFPA Annual report (2013). Publisher UNFPA ISBN 978-0-89714-994-5.
- 287 [15] Taofeek, I. Sample Size Determination. Research Methodology and Dissertation Writing for
288 Health and Allied Health Professionals 1st edition, Cress Global Link Limited, Abuja, 2010; **Pp** 74-75.
- 289 [16] Muhammad, I. M., Umoru, A. M., Isyaka, T. M.,. Intestinal parasitic infections among patients
290 attending a Tertiary Health Institution in North-eastern Nigeria. *American Journal of Research*
291 *Communication*. 2014; **2**(6): 88-96.
- 292 [17] Cheesbrough, M. District Laboratory Practice in tropical countries part 1, Cambridge University
293 Press, and International U.K. **Pp** 184-205. Children in southeast Nigeria. *Journal 7, Environmental*
294 *health*. 2005; **1**(2); 8-64.
- 295 [18] Ochei, J. Kolhatkar, A. Medical Laboratory Science. Theory and Practice. Tata Mcgraw-Hill
296 Publishing Company Limited: New Delhi. 2nd Edition. 2000; **Pp** 331-349.
- 297 [19] Garba, D. D. Thomas, H. Z. Jatau, E. D. Inabo, H. I. Prevalence of intestinal helminths among
298 primary school children in chikun and kaduna south local Government Area of Kaduna state, Nigeria.
299 *J. Med. Res.* 2014; Vol 2(2), Pp 6-1.
- 300 [20] Baragundi, M. C. Sonth, S. B. Solahannwar, S. Patil, C. S. The prevalence of parasitic infections
301 in patients attending tertiary care hospital, *Nat J Bas Med Sci.* 2011; **2**(1):314.
- 302 [21] Kabiru, M., Mohammed, R.A., and Julia O. Intestinal Parasitic Infection and Assessments of Risk
303 Factors in North-Western, Nigeria: A community based study. *International Journal of Pharma*
304 *Medicine and Biological Sciences*. 2015; **4**:2
- 305 [22] Ikeh, E., M. Obadofin, B. Brindeiro. Intestinal parasitism in rural and urban areas of North
306 Central Nigeria, an update, *Internet J. of Microbiology*. 2006; vol. 2, no. 1.
- 307 [23] Matthys, B. M. Bobieva, G. Karimova, Z. Mengliboeva, V. Jean, Richard,. Prevalence and risk
308 factors of helminths and intestinal protozoa infections among children from primary schools in
309 Western Tajikistan, *Parasites and Vectors*. 2011; vol. 4, no. 195, **Pp**. 1-13.
- 310 [24] Missaye, A. D. Mulat, A. Alemu, and Agersew, A. Prevalence of intestinal parasite and
311 associated risk factors among HIV/AIDS Patients with pre-ART and on-ART Clinic, North-east
312 Ethiopia, *AIDS Research Therapy J.* 2013; vol. 10, no. 7, **Pp**. 1-9.
- 313 [25] Okon, K.O. Moses, A. E. Zailani, S. B. Tettey, E. N. "Prevalence of human intestinal parasites in
314 a semi-arid area of Nigeria: A five year review". *Nig. J experimental applied biology*. 2003; **17**: 503-
315 24.
- 316 [26] Brooker, S, Hotez P. J. Bundy, D. A. Hookworm-Related Anaemia. Among Pregnant Women: A
317 *Systematic Review of Trop.* 2008; **Pp** 2-4.
- 318 [27] Atu, B.O. Galadima, M. and Alice, F. Prevalence of intestinal parasites in Etulo, Benue State
319 Nigeria. *Nig. J. of Parasitology*. 2006; 7: **Pp** 1-16.
- 320 [28] Gelaw, A. A. Belay, Nigssie, B. Prevalence of intestinal parasitic infections and risk factors
321 among School children at the university of Gondar Community School, North-west Ethiopia, a cross
322 sectional study, *BMC Public Health*, 2013; vol. 13, no. 1, pp. 257.
- 323 [29] Abou-EL, F. R. Salama, Taha, N. "Predictors of intestinal parasitic infection among pre-school
324 children in Rural Lower Egypt, *The Egyptian Journal of Community Medicine*. 2009; vol. 27, no. 1, **Pp**.
325 1-9.

- 326 [30] Oguoma, V. M. Anyasodor A. E. Mbata, T. I. Valence of Intestinal Protozoan parasites among
327 children aged 5-12 years in Owerri Metropolis South Eastern Nigerian. *Trop. J. Health Sci.* 2008;
328 15(2): **Pp** 43-48.
- 329 [31] WHO. De-worming for health and development. Report of the third global meeting of the partners
330 for parasite control. 2005.
- 331 [32] Adekunle, L. Intestinal parasites and nutritional status of Nigerian children. *Afr. J. Biomed. Res.*
332 2002; 5: **Pp** 115-119.
- 333 [33] Akinbo, F. O. Omerigie R. Eromwan, R. Prevalence of intestinal parasites among patients in
334 tertiary hospital in benin city, Nigeria. *North American journal of medical science.* 2011; 3(10):462-
335 464.
- 336 [34] Erko, B. Medhin, G. Human helminthiasis in wodogenet, southern Ethiopia, with emphasis on
337 geohelminthiasis, *Ethiop MED J.* 2003; 41: **Pp** 333-44.
- 338 [35] Asrat, A. Tewodros, D. Alemayehu, W. Prevalence and risk factors of intestinal parasites among
339 Delgi school children, North Gondar, Ethiopia. *Journal of parasitology and vector Biology.* 2011; Vol.
340 3(5) **Pp** 75-81.
- 341 [36] Miller SA, Rosario CL, Rojas E, Scorza JV. Intestinal parasitic infection and associated symptoms
342 in children attending day care centres in Trujillo, Venezuela. *Trop Med Int Health.* 2003; 8:342-7.
- 343 [37] Nasiri V, Esmailnia K, Karim G, Nasir M, Akhavan O. Intestinal parasitic infections among
344 inhabitants of Karaj City, Tehran province, Iran in 2006-2008. *Korean J Parasitol.* 2009; 47:265-8..