

**PREVALENCE AND AWARENESS OF TREATMENT OF ERECTILE DYSFUNCTION (ED) IN ABUJA, NIGERIA.**

**ABSTRACT**

**INTRODUCTION**

Erectile dysfunction (ED) is the most common male sexual dysfunction all over the World. It is underestimated in developing countries including Nigeria because it is assumed not to be a life threatening condition which is associated with stigma and poor health seeking behavior. The Prevalence rate of ED among specific age groups has not been reported in most available local studies. This study aims at determining the prevalence rates of ED and severity of ED among different age groups and patients' awareness of its treatment.

**METHODS**

The study was a descriptive cross-sectional hospital based survey among men aged 18years and above seen in the outpatient clinics of University of Abuja Teaching Hospital, Gwagwalada, Abuja, Nigeria. The prevalence and severity of ED was obtained using International Index of Erectile Function-5 Questionnaire (IIEF-5).

**RESULTS**

A total of 378 subjects were recruited for this study with age range of 18-76yers. The prevalence of ED in this study using IIEF-5 was 66.4%. ED was more prevalent (42.2%) among men aged 40 to 59 years with mild ED accounting for 51.4% in this age group. In the elderly population only 28.4% had ED even though the older subjects had more severe forms of ED (4.1%). There was a positive correlation between age and ED ( $\rho = -0.306$ ). There was statistically significance between ED and co-morbidities with hypertension accounting for 22.5% and diabetes 16.7%.

The percentage of subjects aware of treatment for ED was 39.4% and 20.4% of the subjects had sought help from doctors. Only about a quarter (26.5%) of the subjects had their sexual challenges discussed with the doctor.

## **CONCLUSION**

ED is a common medical and social problem in our environment though still shrouded in secrecy. The trend could be changing with ED now presenting around the middle age rather than the older age and this poses a cause for concern. The more severe forms are however still being seen in the elderly. Awareness of treatment, treatment seeking behavior and the ability of the attending physicians to discuss with men about their sexual health remains quite poor in our environment.

**KEY WORDS:** Sexual dysfunction, Erectile dysfunction, Prevalence, men, IIEF-5

## **INTRODUCTION**

National Institute of Health (NIH) defines erectile dysfunction as the consistent inability to maintain a penile erection, sufficiently for satisfactory sexual intercourse.<sup>1</sup> It is projected that the number of men with this condition will rise to 322 million by the year 2025.<sup>2</sup>

Erectile Dysfunction (ED) reduces the quality of life, and is associated with depression, increased anxiety and poor self-esteem in affected patients.<sup>3</sup> Despite these effects, ED seems to be a very sensitive issue and most individual do not wish to have it discussed.<sup>3</sup> ED is underestimated in developing countries including Nigeria because it is not seen as a life threatening condition and partly due to the stigma associated with it.<sup>4</sup> Some men believe that it may resolve on its own, while others attribute it to the aging process. Others don't know that treatment can be offered by physicians and others resort to the use of alternative medications. It is common for men to suffer psychological trauma when they no longer fulfil what is deemed as a man's role in sexual relationships. Most men, even when they admit there is a problem with their erections, they are unwilling to seek help.<sup>5</sup>

Prevalence rates of ED among specific age groups were not reported in most available studies and this poses difficulties making conclusions regarding the prevalence of different degrees of severity of ED among different age groups.

## **METHODOLOGY**

The study was a descriptive cross-sectional hospital based survey among consenting men 18years and above in the University of Abuja Teaching Hospital, Gwagwalada, Abuja (UATH) Nigeria from October 2018 to December 2018. UATH is a cosmopolitan tertiary hospital that attends to patients in Abuja and neighboring States. The study was approved by the Ethics Committee of University of Abuja Teaching Hospital with HREC protocol number: UATH/HREC/PR/2018/010/176 and approval number: UATH/HREC/PR/2018/010/030. All participants gave written informed consent, and the procedures followed were in accordance with institutional guidelines. Subjects were recruited serially and men with significant cognitive impairment and any documented psychiatric illness were excluded. The questionnaires were administered to the subjects by well-trained research assistants. Participants' socio-demographic data, clinical and surgical histories were asked and documented

The instrument used was the International Index of Erectile Function-5 Questionnaire (IIEF-5). The International Index of Erectile Function-5 Questionnaire is a brief, reliable and valid self-administered questionnaire containing five domains, erectile function (questions 1 to 5,15), intercourse satisfaction (questions 6 to 8), orgasmic function (questions 9, 10), sexual desire (questions 11, 12), and overall satisfaction (questions 13, 14). The erectile function was classified based on the scores on IIEF-5 into severe 0-7; moderate 8-11; mild to moderate 12-16; mild ED;17-21, and 22-25, no dysfunction. Data analysis was done with the IBM- Statistical Package for Social Sciences (SPSS), version 20. Continuous variables were presented as means  $\pm$ S.D. Categorical variables were expressed as frequencies and percentages. P-value < 0.05 was considered significant and the confidence Interval (CI) of 95% was used.

## RESULTS OF PREVALENCE OF ERECTILE DYSFUNCTION IN UATH

Table 1 shows the socio-demographic characteristics of the study population.

	Erectile Dysfunction		$\chi^2$	P-value
	Yes	No		
	n=102 n (%)	n=276 n (%)		
Age group(years)	48.9±13.6 <sup>s</sup>	38.1±12.5 <sup>s</sup>	6.998 <sup>‡</sup>	<0.001
18-39	30(29.4)	161(58.3)	39.335	<0.001
40-59	43(42.2)	95(34.4)		
60-79	29(28.4)	20(7.3)		
Ethnicity			6.298	0.098
Yoruba	21(20.6)	31(11.2)		
Hausa	14(13.7)	41(14.9)		
Igbo	23(22.5)	58(21.0)		
Others	44(43.1)	146(52.9)		
Education			25.441	<0.001
Primary	16(15.7)	13(4.7)		
Secondary	35(34.3)	62(22.5)		

Tertiary	45(44.1)	193(69.9)		
No formal Education	6(5.9)	8(2.9)		
Occupation			3.653	0.724
Civil servant	26(25.5)	87(31.5)		
Trading/Business	31(30.4)	68(24.6)		
unemployed/students	20(19.6)	62(22.5)		
Retired	4(3.9)	5(1.8)		
Others	17(16.7)	42(15.2)		
Artisans	1(1.0)	3(1.1)		
Professionals	3(2.9)	9(3.3)		
<sup>¥</sup> t-test statistic	<sup>§</sup> mean±SD			

A total of 378 subjects were recruited for this study, with a mean age of  $41 \pm (13.6)$  years while the age range was 18-76 years. Majority of the subjects were married (68.8%), while the rest were either unmarried or separated. Over 60% of the subjects had tertiary education and two thirds had secondary education. ED was more prevalent (42.2%) among men aged 40 to 59 years while 28.4% of elderly men had ED. There is a positive correlation between age and ED as shown in table 2 below. The association between men that had ED and those that did not have ED in the different age groups was statistically significant ( $P < 0.001$ ) as shown in table 3.

Table 2 shows the correlation between ED and age

		Erectile dysfunction/Age
Spearman's rho	Correlation Coefficient	0.306
	P-value	0.001
	N	378

There was no statistical significance between ED and ethnic group (P -0.098)

A higher percentage (44.1%) of the men who had ED had tertiary education as compared to those with primary education who made up 15.7%. Only 5.9% of men with no formal education had ED. There was statistical significance between educational level and ED (P<0.001)

Civil servants made up 25.5% of the study population while 19.6% were either unemployed or students. There was however no statistical significance between occupation and ED. (p - 0.724)

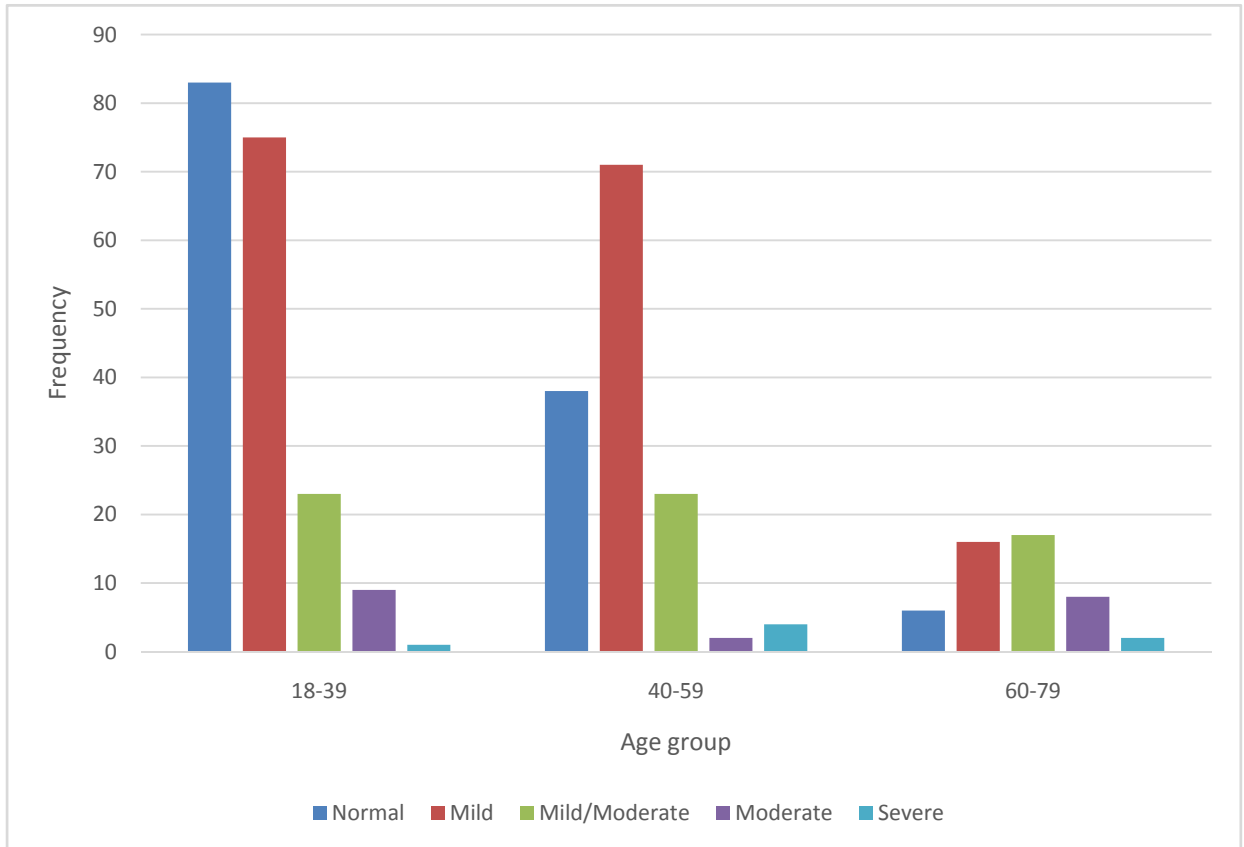


Figure 1 shows the distribution of ED and severity of ED among the different age groups

The figure above shows that ED was more prevalent among age group 40-59 years and mild ED accounted for 51.4% in this age group. The age group 60-70 had the most severe ED (4.1%)

Table 3 shows the IIEF-5 scores, the relationship between ED and co-morbidities, lifestyle, BMI respectively.

	Erectile Dysfunction		$\chi^2$	P-value
	Yes	No		
	n=102	n=276		
	n(%)	n(%)		
IIEF			143.4	<0.001
Normal	7(6.9)	120(43.5)		
Mild	29(28.4)	133(48.2)		
mild/Moderate	42(41.2)	21(7.6)		
Moderate	18(17.6)	1(0.4)		
Severe	6(5.9)	1(0.4)		
Co-morbidity			30.816	<0.001
None	58(56.9)	219(79.3)		
Hypertension	23(22.5)	31(11.2)		
Diabetic	17(16.7)	11(4.0)		
Heart Disease	0	7(2.5)		
Others	4(3.9)	8(2.9)		
Smoke cigarette			13.447	<0.001

No	76(74.5)	247(89.5)		
Yes	26(25.5)	29(10.5)		
Alcohol intake			0.335	0.563
No	64(62.7)	182(65.9)		
Yes	38(37.3)	94(34.1)		
BMI			0.308	0.857
Normal	36(35.3)	106(38.4)		
Overweight	44(43.1)	113(40.9)		
Obese	22(21.6)	57(20.7)		

---

The mean BMI was 26.8kg/m<sup>2</sup>. More than a third (35.3%) had normal BMI and 43.1% of the overweight subject had ED. There was no statistical significance between BMI and ED (P - 0.857)

Majority of the subjects (74.5%) who had ED did not smoke while 25.5% of subjects that had ED smoked cigarettes. The relationship between cigarette smoking and ED was statistically significant (p<0.001). However, there was no statistically significant association between alcohol and ED (p=0.563).

More than half (56.9%) of the population with ED had co-morbidities. There was statistical significance between ED and co-morbidities ( $p < 0.001$ )

The prevalence of ED in this study using IIEF-5 was 66.4% while the self-reported ED puts the prevalence at 26.98% as depicted by figure 1 below.

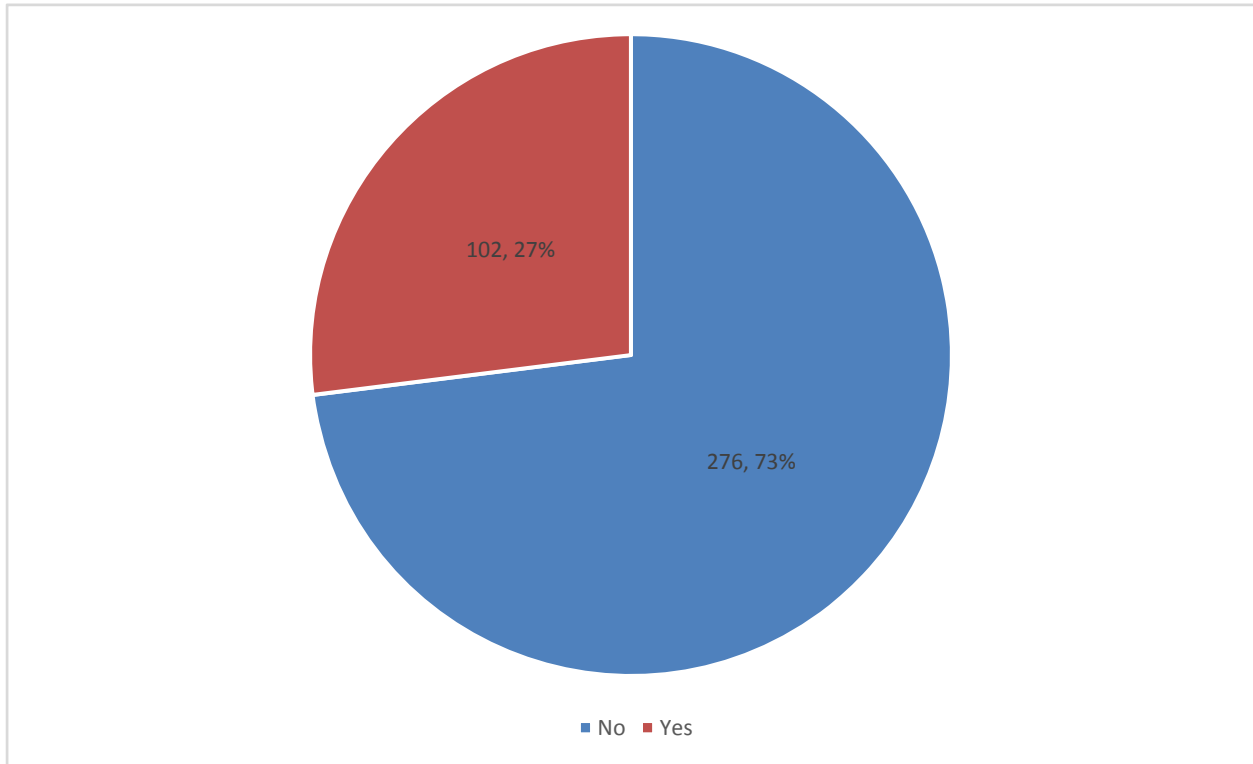


Figure 2 shows self-reported ED among the subjects

Table 4 shows the relationship between ED and drugs use

---

Erectile Dysfunction	
Yes	No
n=102	n=276

---

---

	n(%)	n(%)	$\chi^2$	P-value
Drug history				
anti-depressant	0	3	1.118	0.567
anti-diabetics	19	14	17.174	<0.001
anti-hypertensive	18	13	16.557	<0.001
anti-platelets	0	1	0.371	0.543
Nil	65	244	30.401	<0.001
others	0	1	0.371	0.543

---

UNDER PEER REVIEW

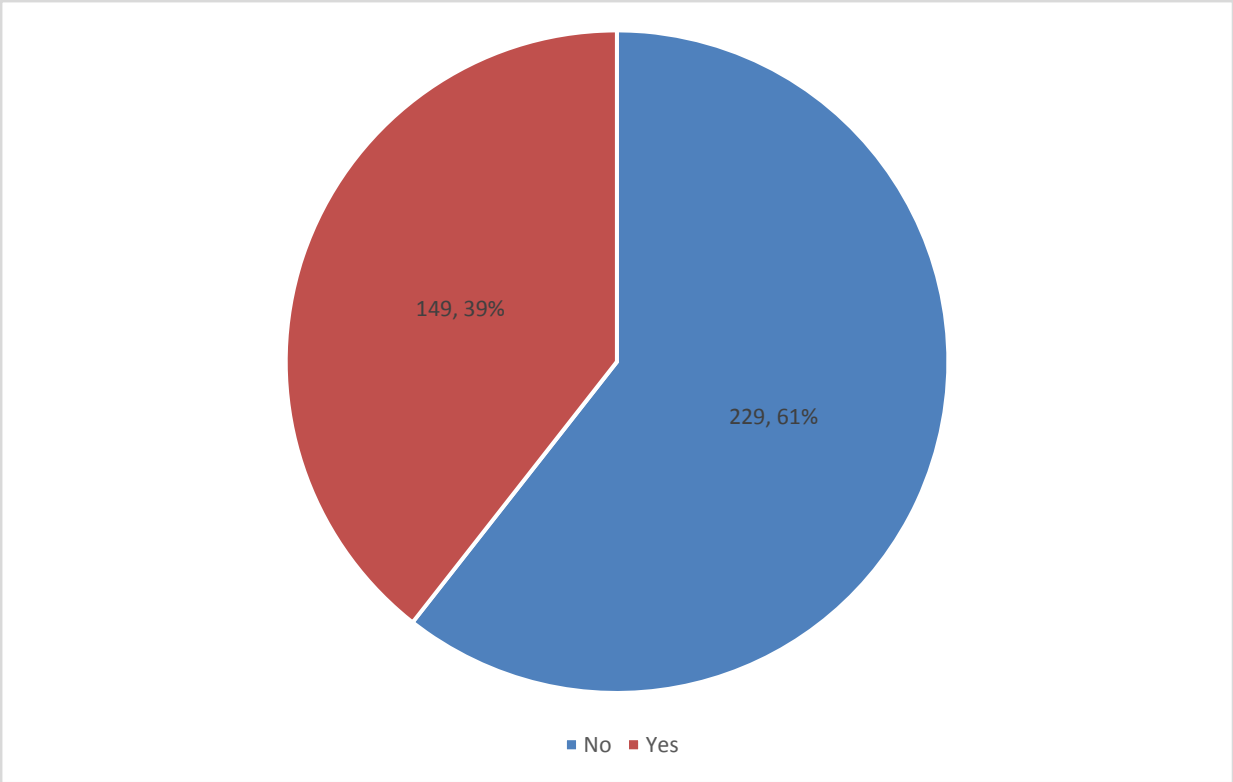


Figure 3 shows awareness of ED treatment by the participants

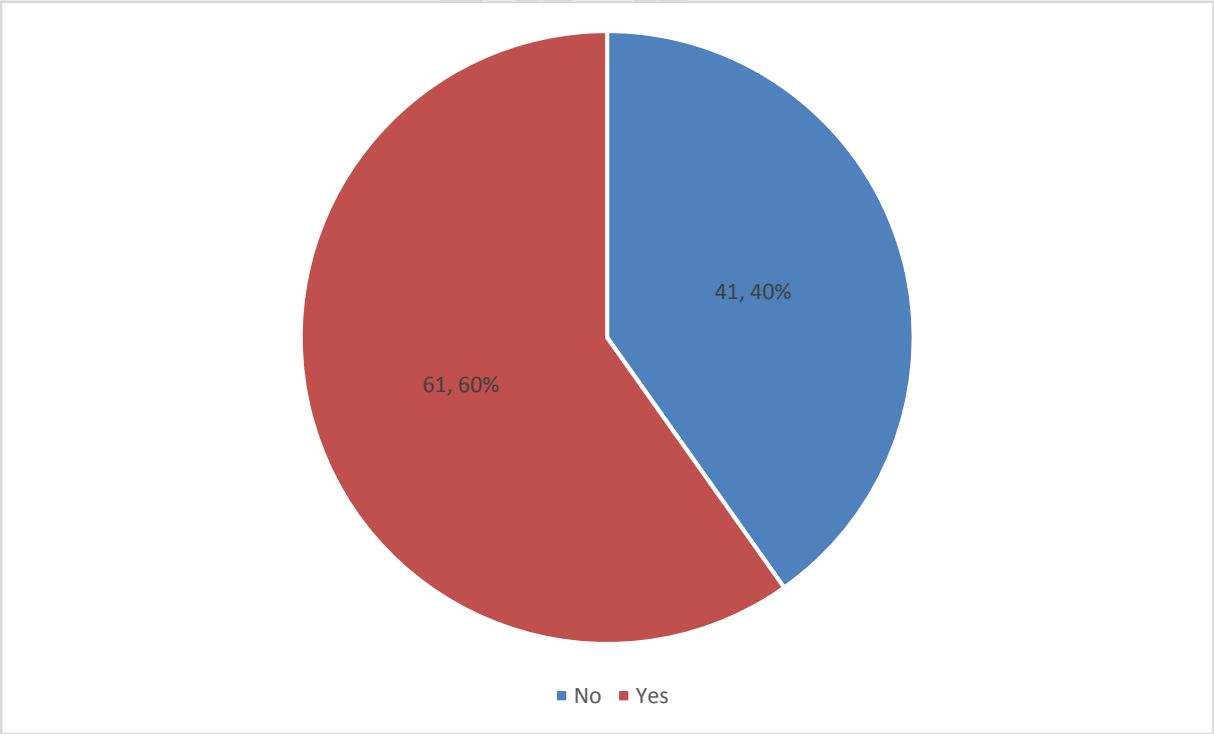


Figure 4 shows the number of subjects who have sought for medical help for ED

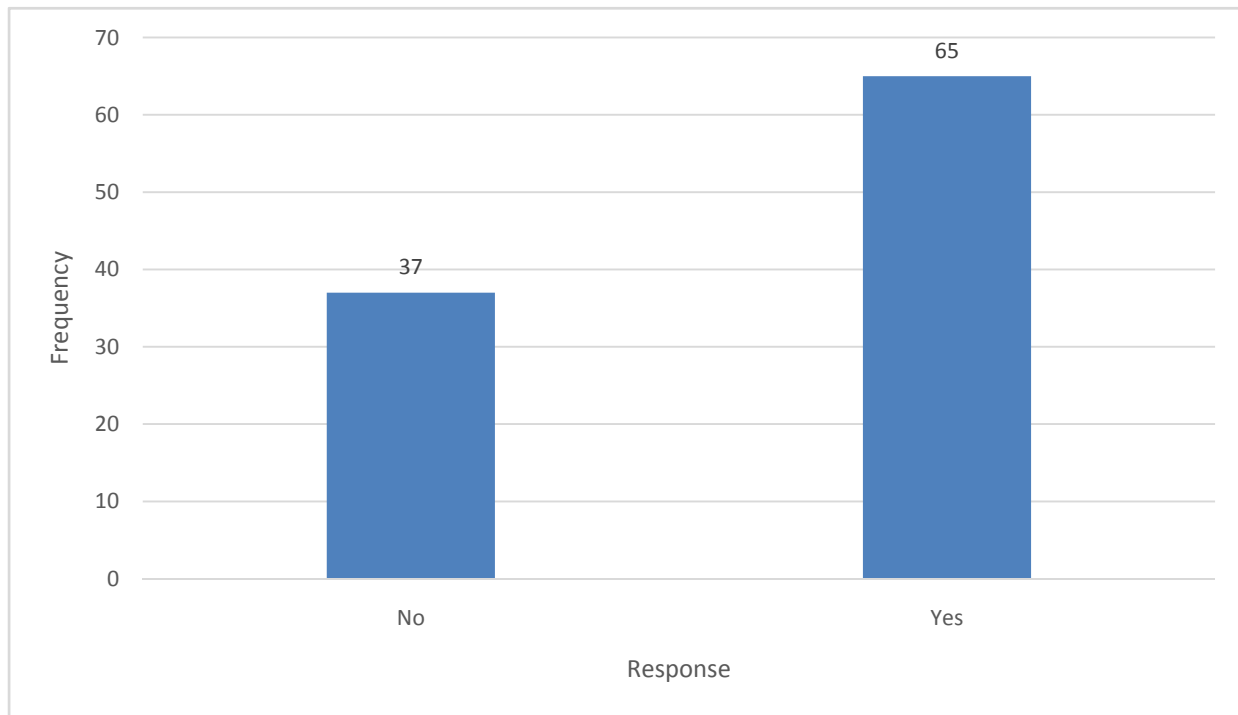


Figure 5 shows the proportion of participants who bought drugs over the counter to boost their erection

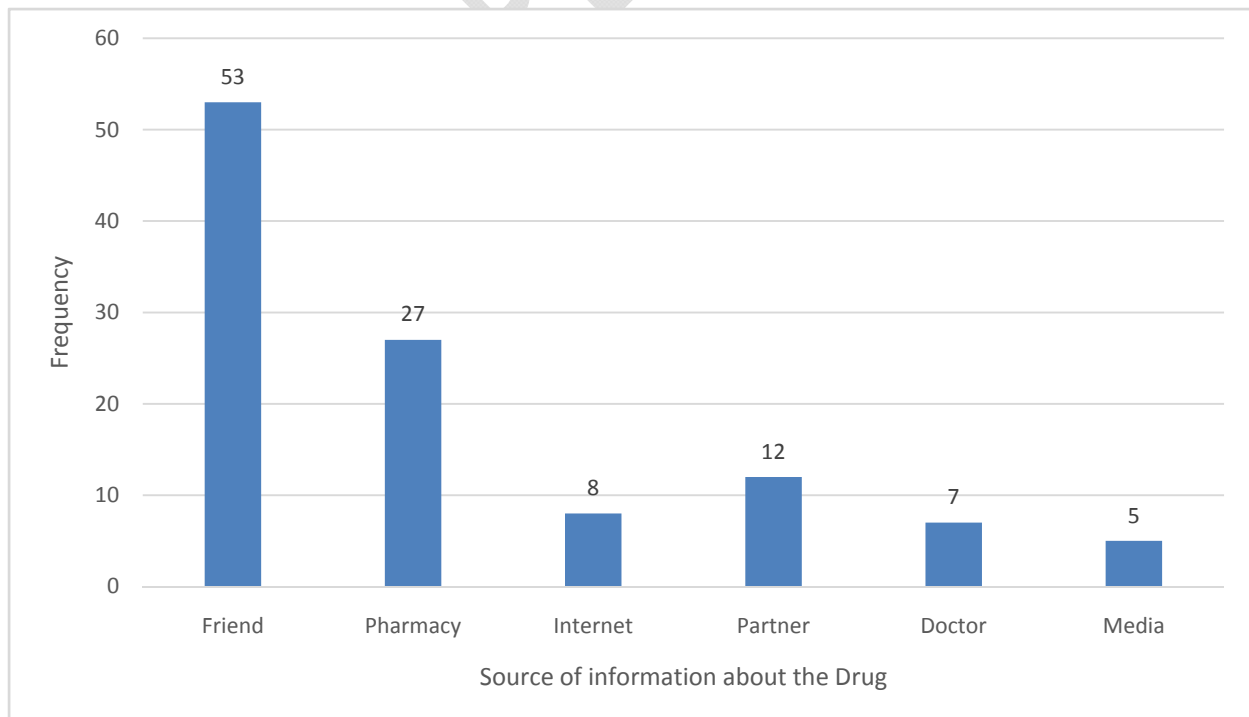


Figure 6 shows the source of information about the drugs by used participants

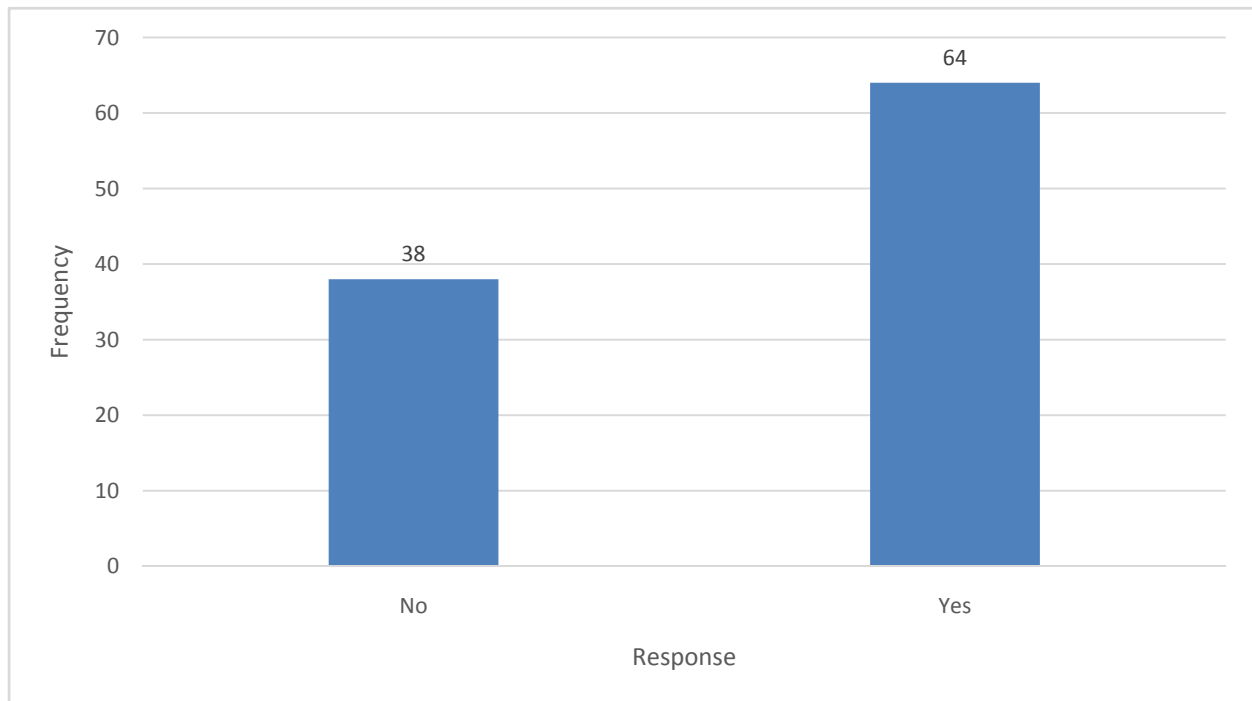


Figure 7 shows herbal preparation use by participants to boost their ED

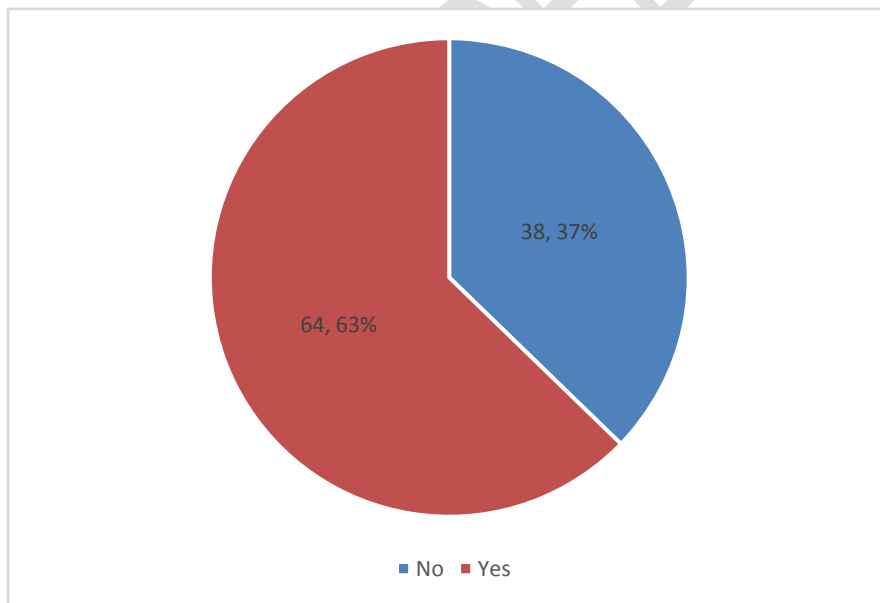


Figure 8 shows the proportion of subjects that had their sexual challenges discussed with the doctor.

## DISCUSSION

The findings of this study show that ED is common in our environment with a prevalence of 66.4% using IIEF-5 whereas the self-reported ED prevalence among men aged 18-76years is 26.98%. This high prevalence obtained using IIEF-5 are similar to reports in previous studies.<sup>6,7,8</sup>

The prevalence of ED may be different and this depends on the system used to perform the evaluation. It is clear that the IIEF-5 scale is more objective in determining the presence of ED as majority of the subjects who claimed not to have ED were detected to have some form of ED using the IIEF-5. In France the prevalence of ED prevalence has been reported as 12 to 25% on the basis of self-evaluation compared to 19 to 31.6% according to International Index of Erectile Function criteria.<sup>9,10</sup>

This prevalence is higher than the one (58.9%) reported by Bolaji et al in a community study in South West Nigeria using IIEF-5 even though, a similar prevalence of moderate ED 47.2% was reported.<sup>11</sup> They used the age range of 30-80 years which is different from the age range we used in this study of 18-76 years. The inclusion of younger subjects in this study may account for the disparity.

In a similar hospital based study in UCH, Ibadan, the prevalence was 55.1% using age range 18-70years.<sup>12</sup>

The prevalence of ED obtained in The Massachusetts Male Aging Study( MMAS) study in men aged 40-70years (52%) was also lower than the prevalence in this study.<sup>13</sup> On the contrary, the prevalence of ED found in a study conducted in Turkey was 69.2% was similar to the prevalence in this study.<sup>14</sup>

A study in New York by Ridwan et al using the IIEF noted ED in 71% of men, of whom 54% had moderate or severe erectile dysfunction, 23% had mild-to-moderate erectile dysfunction and 23% had mild erectile dysfunction. The high prevalence of ED and higher percentages of ED in men is not unusual as this study was done in high risk subjects with co-morbidities.<sup>13</sup>

We observed that about half of those with ED in this study had the mild type of ED (41.2%). This observation is similar to the outcome of the Turkish study on the prevalence of ED<sup>14</sup> and it might partly explain why most ED sufferers do not seek medical attention.

The prevalence of ED is not the same among different countries, continents or ethnic groups. The prevalence rates for mild and severe ED has been reported as 35% in the United States, 26% in Finland, 21% in Italy, 12% in France, and 11% in Spain.<sup>16,17,18</sup>

The finding of ED being more prevalent (42.2%) among men aged 40 to 59 years followed by age range 18-39 years and least common in the elderly was seen as a new trend as ED is generally reported to be higher among the elderly.<sup>19,20</sup> Nevertheless, older subjects had more severe ED and there was a significant positive correlation between ED and age in this study. This is in accordance with studies done by Adebusoye and colleagues in UCH Ibadan. Akkus et al. in Turkey also found a positive significant association between age and ED.<sup>12,14</sup>

Majority of the subjects in our study had tertiary education and there was a significant association between ED and educational level. Education is an important determinant of social class, and could influence the lifestyle of individuals. Although, the impact of socioeconomic factors on sexual function is controversial, individuals in a higher socio-economic class are more prone to stress.<sup>21</sup> This is because of their status and lifestyles, which have the tendency to predispose them to cardiovascular risk factors.<sup>21</sup>

In this study, although, the proportion of smokers who had ED (25.5%) was less than the proportion of non-smokers who had ED,(74.5%) there exists a significant relationship between ED and smoking( $p<0.001$ ). Similarly, a review of 18 studies by Dorey et al. concluded that tobacco smoking has adverse effects on erectile function, with smokers being approximately 1.5 times more likely to report ED compared with non-smokers.<sup>22</sup>

A cross-sectional study conducted in Italy among men who were 18 years and above to compare the risk of ED in non-smokers with current smokers and ex-smokers in 2010 yielded odds ratios of 1.7 and 1.6 respectively. The study also showed that the risk of developing ED is influenced by smoking and that the duration of the habit increases this risk.<sup>23</sup> In contrary, Bolaji et al. found

no statistical significance between ED and smoking as well as the MMAS which did not show significant difference between current smokers and non-smokers.<sup>13,23</sup>

In this study, alcohol consumption was not found to be a significant risk of ED. The relationship between alcohol intake and its effect on ED is still debatable as some studies have argued that small amount can promote erection, others found that large amount can further suppress erection and chronic alcoholism can cause irreversible neurological damage with consequent worsening of ED.<sup>24,25,26</sup> The reason why alcohol intake did not have a significant relationship with ED in our study cannot be explained clearly since we did not quantify the amount of alcohol taken by the subjects.

Hypertension was the most common co-morbidity associated with ED in this study and the association between ED and co-morbidities were statistically significant

The Massachusetts Male Aging Study (MMAS) found that ED correlated with heart disease, hypertension, diabetes, and low levels of high-density lipoprotein cholesterol, independent of age.<sup>27</sup>

A study by Olarinoye in Ilorin Nigeria, organic factors such as chronic medical conditions including hypertension, diabetes mellitus, as well as adverse effects of therapies used for these conditions are known to constitute major causes of ED.<sup>27</sup> Similar findings on adverse effect of antihypertensives on ED was reported by Garko et al.<sup>28</sup>

Shabsigh reported that the most frequent co-morbidities in men with ED in the health care system were hypertension and hyperlipidemia and diabetes<sup>13</sup>

The low level of awareness of treatment of ED found in this study was similar to findings of a study done by Shirai et al.<sup>29</sup> It was a national study which assessed awareness of ED treatment among married couples in Japan. Only 4.8% of the study population had consulted a physician or sought treatment. This was attributable to cultural factors.

The finding of low level of awareness of treatment among the subjects (39.4%) and the small number of subjects (20.4%) who sought for help for treatment of ED may be further compounded by poor communication between the attending physicians and the patients as almost

two fifth of the subjects reported that their ED challenges were not discussed with the doctor (37%). This is similar to the findings in a study by Ariba and colleagues on perception and practice in the management of ED by primary health physicians. 76% of the respondents (primary health physicians) reported that ED was common in their practice but only 18% of them have ever prescribed medications for affected patients and that most of the physicians (62%) would not take sexual history, unless it is brought up by the patients.<sup>4</sup>

More than half of subjects who had taken drugs to boost their erection knew about it through their friends and about half of them obtained the drugs over the counter.

The use of herbal preparations to treat ED in our environment may not be unconnected with the social stigma, cultural perception on its cause and the perceived response to indigenous herbs.

The trend of ED is changing from the findings in this study. ED was more prevalent in men in their forties compared to previous studies, although the most severe forms were seen in the elderly.

## **CONCLUSION**

The prevalence of ED was high in our environment with low awareness and poor treatment seeking behavior.

## **RECOMMENDATIONS**

ED is now a public health problem and as such health education on lifestyle modification is important in curbing this increasing alarming trend. Public health enlightenment will help to increase the awareness of treatment of ED and discourage patronage of traditional medicine in our environment.

## REFERENCES

1. National Institutes of Health (NIH), author Consensus Development Panel on Impotence. JAMA. 1993;26:83
2. Aytac IA, Mckinlay B, Krane RJ. The likely worldwide increase in erectile dysfunction between 1995 and 2025 and some possible policy consequences. BJU International. 1999;84:50–56
3. McKinlay JB. The worldwide prevalence and epidemiology of erectile dysfunction. International Journal of Impotent Research 2000; 12(14):6-11
4. Ariba A J, OLadapo O T, Iyaniwura C A, Dada O A. Management of erectile dysfunction: perceptions and practice of Nigeria primary care physicians.SA FamPract, 2007;49(9):16.
5. De Berardis G, Franciosi M, Belfiglio M, Di Nardo B, Greenfield S, Kaplan SH et al. Quality of Care and Outcomes in Type 2 Diabetes (QuED) Study Group. Erectile dysfunction and quality of life in type 2 diabetic patients: a serious problem too often overlooked. Diabetes Care 2002; 25(2):284-2 91
6. Berrada S, Kadiri N, Mechakra-Tahiri S, Nejjari C. Prevalence of erectile dysfunction and its correlates: a population- based study in Morrocco. Int J of Impot Res. 2003;15(suppl1):S3–S7
7. Shaer KZM, Osegbe DN, Siddiqui SH, Razzague A, Glasser DB, Jaguste V. Prevalence of erectile dysfunction and its correlates among men attending primary care clinics in three countries: Pakistan, Egypt and Nigeria. Int J Impot Research. 2003;(supp):8–14,
8. Moreira ED, Bestance WJ, Bartolo EB, Fittipaldi JA. Prevalence and

determinants of erectile dysfunction in Santos, South eastern Brazil. *Sau Paulo med Journal*. 2002;120:49–54

9. Giuliano F, Chevret-Measson M, Tsatsaris A, et al. Prevalence of erectile dysfunction in France: results of an epidemiological survey of a representative sample of 1004 men. *Eur Urol* 2002; 42: 382–389
10. Low WY, Wong YL, Zulkifli SN, et al. Malaysian cultural differences in knowledge, attitudes and practices related to erectile dysfunction: focus group discussions. *Int J Impot Res* 2002; 14: 440–445
11. Bolaji OyetundeOyelade, Abiodun Christopher Jemilohun, Sunday Adedeji Aderibigbe. Prevalence of erectile dysfunction and possible risk factors among men of South-Western Nigeria: a population based study. *PAMJ*.2016;24:124
12. Adebusoye LA, Olapade-Olaopa OE, Ladipo MM, Owoaje ET. Prevalence and correlates of erectile dysfunction among primary care clinic attendees in Nigeria. *Glob J Health Sci*. 2012; 4(4):107-17.
13. Shabsigh R. Epidemiology of erectile dysfunction. In: Mulcahy J, editor. *Current Clinical Urology: Male Sexual Function: A Guide to Clinical Management*. 2nd ed. Totowa, NJ: Humana Press Inc; 2006. p. 47-59.
14. Akkus E, Kadioglu A, Esen A, Doran S, Ergen A, Anafarta K et al. Prevalence and Correlates of Erectile Dysfunction in Turkey: A Population-Based Study. *Eur Urol*. 2002; 41(3):298-304.
15. Braun M, Wassmer G, Klotz T, et al. Epidemiology of erectile dysfunction:

- results of the Cologne male survey. *Int J Impot Res* 2000; 12: 305–311.
16. Laumann EO, Paik A, Rosen RC. Sexual dysfunction in the United States. Prevalence and predictors. *JAMA* 1999; 281: 537–544.
17. Giuliano F, Chevret-Measson M, Tsatsaris A, et al. Prevalence of erectile dysfunction in France: results of an epidemiological survey of a representative sample of 1004 men. *Eur Urol* 2002; 42: 382–389
18. Piores OM, Jimeno CA, Acampado LT. Erectile Dysfunction Among Diabetes Men At UP-PGH Outpatient Department: Prevalence And Risk Factors. *Phil J Internal Medicine*. 2004;42:197–202
19. Berrada S, Kadiri N, Mechakra-Tahiri S, Nejari C. Prevalence of erectile dysfunction and its correlates: a population- based study in Morocco. *Int J of Impot Res*. 2003;15(supp11):S3–S7,
20. Prins J, Blanker MH, Bohnen AM, Thomas S, Bosch JLHR. Prevalence of erectile dysfunction: a systematic review of population-based studies. *Int J Impot Res* 2002; 14: 422–432.
21. Billups KL, Bank AJ, Padma-Nathan H, Katz SD, Williams RA. Erectile dysfunction as a harbinger for increased cardiometabolic risk. *Int J Impot Research*. 2008;20:236–242, Pinnock CB, Stapleton AM, Marshall VR. Erectile dysfunction in the Community: A prevalence Study. *Med J*. 1999;171:353–357.
22. Dorey G. Is smoking a cause of erectile dysfunction? A literature review. *Br J Nurs*. 2001; 10(7):455-465.
23. Mirone V, Imbimbo C, Bortolotti A, Di Cintio E, Colli E, Landoni M et al.

Cigarette smoking as risk factor for erectile dysfunction: results from an Italian epidemiological study. *Eur Urol.* 2002; 41(3):294-729

24. Miller NS, Gold MS. The human sexual response and alcohol and drugs. *J Subst Abuse Treat.* 1988; 5(3):171-177,
25. Rimm E, Bacon C, Giovanucci E, Kawachi I. Body weight, physical activity, and alcohol consumption in relation to erectile dysfunction among US male health professionals free of major chronic diseases. *J Urol.* 2000; 163(Suppl):15
26. Lemere F, Smith JW. Alcohol-induced sexual impotence. *Am J Psychiatry.* 1973; 130(2):212-213
27. Olarinoye JK, Kuranga SA, Katibi IA, Adeniran OS, Jimoh AAG, Sanya EO. Prevalence and determinants of erectile dysfunction among people with type 2 Diabetes in Ilorin Nigeria, Shabsigh R, Anastaiadis AG. *Erectile Dysfunction. Annu Rev Med.* 2003;54:153–168.
28. Garko B, Ogunsina MO, Danbauchi SS. Sexual dysfunction in hypertensive patients. Implications for therapy. *Ann Afr med.* 2005;4:46–51
29. Shirai M, Takimoto Y, Ishii N, et al. Influence of erectile dysfunction on daily life and general attitudes towards treatments. *Nippon Hinyokika Gakkai Zasshi (Japan), Jpn J Urol* 2001; 92(7): 666–673.

**Sources of grant/support**-None

**Conflict of Interest**-None

**LEGEND TO FIGURES**

**Figure 1:** shows the distribution of ED and severity of ED among the different age groups

**Figure 2:** shows self -reported ED among the subjects

**Figure 3:** shows awareness of ED treatment by the participants

**Figure 4:** shows the number of subjects who have sought for medical help for ED

**Figure 5:** shows the proportion of participants who bought drugs over the counter to boost their erection

**Figure 6:** shows the source of information about the drugs by used participants

**Figure 7:** shows herbal preparation use by participants to boost their ED

**Figure 8:** shows the proportion of subjects that had their sexual challenges discussed with the doctors

#### **LEGENDS TO TABLES**

**Table 1:** shows the socio-demographic characteristics of the study population.

**Table 2:** shows the correlation between ED and age

**Table 3:** shows the IIEF-5 scores, the relationship between ED and co-morbidities, lifestyle, BMI

**Table 4:** shows the relationship between ED and drugs use