

Original Research Article

Vegetative Propagation of *Balanites aegyptiaca* (L.) Del. by Air Layering under Sahelian Climate in Niger

ABSTRACT

Balanites aegyptiaca (L.) Del. is a fruit species from the Sahelian and Sudano-sahelian zones, highly appreciated by the population. It provides a source of income for the rural population and its various parts are used for human and animal food, handicrafts and traditional medicine. However, the lack of data on propagation techniques of the species is a **handicap significant limitation** to its domestication. This study aims to evaluate the vegetative propagation capacity of *Balanites aegyptiaca* by air layering. The trials were conducted in the Arboretum of Sahara Sahel Foods in Zinder, Niger. The layers were placed on orthotropic branches. The variables selected **are were** the diameter class (1-2 cm, 2-3 cm and 3-4 cm) and the substrate (sand + manure, sand + sawdust and sand). A total of 116 layers were made. The results **showed** that 93.1 % of the layers have taken root two months after realization. The diameter classes and the three substrates have no significant influence on the number of roots. In contrast, root length varied significantly with substrates ($P = 0.000$) and branch diameter classes ($P = 0.031$). As for the diameter of the newly formed roots, a significant difference **has been was** observed between the diameter classes, and the substrates have no significant effect on this parameter. One month after weaning of layers, an average survival rate of 68.5% was obtained. The seedlings of the diameter class [2-3[cm have the highest survival rate (83.1%). These results suggest that it is possible to produce *Balanites aegyptiaca* plants by air layering, and could contribute to the development of strategies adapted to its domestication.

Comment [F1]: Punctuation not required here

Comment [F2]: Rephrase as earlier suggested

Keywords: *Balanites aegyptiaca*, air layering, seedling production, domestication, Sahel, Niger.

1. INTRODUCTION

In the Sahel, woody species, and especially fruit trees, present a certain socio-economic interest for local populations. They provide income to households, contribute to food security and improve the health and nutritional status of these populations [1, 2, 3, 4]. In recent years, the population explosion has led to overexploitation of multipurpose trees with a direct impact on the status of their natural stands and household incomes [5, 6]. Many woody stands are thus in a regressive dynamic, characterized by rarefaction or the absence of young individuals [7, 8]. It is therefore essential to maintain and reverse this regressive trend by reforestation using multi-purpose woody or fruit trees.

B. aegyptiaca is a multipurpose species in Niger. It is exploited for its fruits, the wood for the manufacture of agricultural tools and for various medicinal products. Fruits are eaten raw and their almonds are transformed into oil and soap [9, 10]. The young leaves and flowers are consumed by the populations, especially during the food lean season [11]. In Niger, Many households live through the exploitation, processing and marketing of fruits of this species.

Faced with these multiple uses, and in a context of degradation of ecosystems and climate change, it is important to conserve the genetic and economic potential of the species through research programs on propagation modes, and to consider *its* domestication.

Sexual reproduction of woody species remains the favored method of propagation for the conservation of the environment and the richness of its biodiversity [12]. However, for some species, the lack of seed or low germination capacity reduces the production seedling by the sexual way [13]. In addition, the ability of seedlings to move from the young to the adult stage is hampered by several factors including the tooth of animals, bush fires and especially the long dry season [14, 15]. Vegetative propagation can be a *response solution* to the problems of natural regeneration [16]. It allows the conservation of a genetic patrimony and the capture of an interesting genotype by cloning agronomic interesting subjects. Air layering is one of the techniques used in vegetative propagation. It is carried out directly on the tree, on selected portions of stems or small branches. The time of root formation varies according to the layered species [17]. In Niger, in the field of vegetative propagation, work has been successfully conducted on species of high socio-economic interest [18, 19]. But, scientific data on vegetative propagation of *B. aegyptiaca* are almost non-existent. As such, this work aims to evaluate the vegetative propagation capacity of *B. aegyptiaca* by air layering.

2. MATERIALS AND METHODS

2.1 Study site

The trials were conducted in the Arboretum of Sahara Sahel Foods in Zinder, south-central Niger (13° 08'00" North and 08° 58'36" East). According to the phytogeographical subdivision of Niger proposed by Saadou [20], this site is located in the central South-Sahelian sector (Compartment B2). The climate is marked by a long dry season (October to May) and a short rainy season (June to September) (Fig. 1). Average annual rainfall varies from 400 to 500 mm. Mean annual temperatures range from 25 to 30°C.

2.2 Setting up the layers and data collection

The layers were placed from 6 to 8 July 2018 during the rainy season. The parts concerned by the layering on the branches were previously cleared leaves and thorns. The operation consisted of removing a complete ring of bark on the branches over a length of 5 cm (Fig. 1a). The stripped part was wrapped with a transparent and sufficiently thick plastic sleeve containing the substrate. The two ends are then tightly sealed with adhesive tape (Fig. 2b). The treatments consisted of placing the layers on the median part of the orthotropic branches. The variables tested are: diameter classes of branches ([1-2 cm, 2-3 cm and 3-4 cm] and substrates (sand+manure, sand+sawdust and sand). The numbers of layers placed per diameter class and per substrate are shown in Table 1.

The number of layered branches per tree of *B. aegyptiaca* varies from 3 to 6. This number depends on the availability and accessibility of orthotropic branches on the tree. A total of 26 trees of *B. aegyptiaca* were used for this operation. Each layer placed was numbered, and the nature of the substrate and the diameter class of the branch were also mentioned recorded. A quantity of water of 20 ml was injected into the layers with a syringe each time the state of humidity of the substrate is low. After the injection, the holes caused by the introduction of the needle are immediately closed with the adhesive tape. Other interviews were carried out on the layers, in particular the replacement of the adhesive tape which yielded following the sunshine, the rain and the wind. The observations made every 48 h consisted in controlling: the appearance and development of the roots in the substrate through the plastic, the possible signs of drying of the layers on the tree, the drying out and the appearance of buds on the layered branches.

Two (2) months after application, the rate of rooted layers, non-rooted layers and dead or rotten layers per treatment was recorded. On the roots formed, the following parameters were noted: the number, the length measured with a ruler and the diameter measured with an electronic caliper. These measurements were made on half of the rooted layers.

2.3 Weaning of rooted layers

The weaning was carried out on the second half of rooted layers. For this purpose, planting holes were dug. No organic amendments were made in the holes, considering the richness of the soil in well decomposed organic matter. The layers were separated from the mother

Comment [F3]: ???

Comment [F4]: ...consisted of....

plants by cutting the lower part with a horticultural saw (Fig. 3) and transplanted directly into the prepared holes, after having carefully removed the adhesive tape and the plastic. The layers had leaves at transplantation. The plants were watered in the absence of rainfall to ensure permanent soil moisture. Every day, the numbers of live and dead plants were recorded for one month. From this observation, the survival rate (SR) was calculated using the following formula:

$$SR = \frac{NAP}{NTP} \times 100$$

With NAP being the number of **alive** live plants, and NTP, the number of transplanted plants.

2.4 Statistical analysis

An analysis of variance (ANOVA) was performed to determine the types of substrates and diameter classes that affected the number, length, and diameter of newly formed roots. To check if the success rate depends on layered diameter classes, an X^2 test was used. These data were analyzed using the Minitab 17 software.

3. RESULTS

3.1 State of the layered branches and the rooting capacity of the layers

Two weeks after the realization of the layers, 56.3% of the layered branches all treatments (substrates and classes of diameter classes) combined have leaf budding at the lower part of the incised area. No signs of drying were observed on the layered branches during the entire time of the experiment. At harvest, 107 layers rooted out of 116 realized, representing an overall success rate of 93.1% (Table 2). All diameter classes and substrates tested showed good rooting ability of layers, with success rates ranging from 83.3 to 100%. The X^2 independence test performed on the contingency table showed that the success of the layers is independent of the diameter classes ($X^2 = 0.71$, $P = 0.949$). Among the non-rooted layers, 3 have root callus and the other 5 have been found intact and without any sign of rotting.

3.2 Effects of substrates and diameter on newly formed roots

The roots produced by the layers with the three substrates are vigorous and well branched (Fig. 4). Indeed, the number of roots is not significantly influenced by the substrates ($P = 0.998$) (Table 3). On the other hand, the average number of roots of the diameter class [3-4]cm differs from the diameter class [1-2]cm by a significantly high value ($P = 0.012$). ANOVA showed that the number of roots of the diameter class [3-4]cm and that of the diameter class [2-3]cm are statistically the same. Root length averages are significantly different between substrates ($P = 0.000$). In fact, the **sand+manure** substrate was well

Comment [F5]: was

Comment [F6]: please adjust subsequent parenthesis as earlier suggested

distinguished from other substrates with long roots (Table 4). Analysis of variance also showed that branch diameter classes have significant effect on root length ($P = 0.031$). The diameter class [2-3]cm seems to have long roots (13 ± 2.4 cm) compared to the other two diameter classes. As regards the diameter of root, the substrates tested did not have a significant effect on this parameter ($P = 0.332$) (Table 5). In contrast, the comparison of mean root diameter values between branch diameter classes revealed a significant difference ($P = 0.004$).

3.3 Survival rates of *B. aegyptiaca* plants from layering after weaning

Apparent mortality was observed 4 days after weaning in diameter class [2-3]cm plants, which reduces the survival rate of this diameter class to 83.3% and the overall rate at 95.1%.

Then come the plants of diameter class [3-4]cm, whose mortality begins 6 days after transplantation. Seedlings of the class [1-2]cm in diameter, their disappearance does not begin to be observed until the 13th day, almost half of the follow-up time (Fig. 5). At the end, the overall survival rate is 68.5%, plants in the class [2-3]cm in diameter have the highest survival rate (83.1%), followed by the class [1-2]cm (79.2%) and the class [3-4]cm (43.2%). Signs of successful weaning were observed on some plants in the first week, including the appearance of new leaves (Fig. 6a). It should also be noted that some plants presented a transient stress, characterized by the loss of the initial leaves and the beginning of desiccation of the twigs, before recovery a few days later (Fig. 6b).

4. DISCUSSION

The appearance of new leaf buds in the lower part of the layered branches is simply explained by the presence of well-differentiated nodes on these parts. The incision of the bark disturbs the circulation of the elaborated sap; its accumulation in the upper part of the incised zone could stimulate the formation of the new leaves, especially which the setting up of the layers was carried out in of rainy season. This season corresponds to the period of strong photosynthetic activities resulting in an important vegetative development. All non-rooted branches ~~are were~~ alive at harvest, which means that they are likely to take root later. This suggests that the rooting of *B. aegyptiaca* layers may extend beyond the time considered in this study.

The rooting rate of the layers obtained in this study is similar to that obtained by Tchiagam et al. [21] on the same species. This rate could be related, on the one hand, to the humidity of the climate during the experimentation and ~~on the other hand also~~ to the orthotropic orientation of the layered branches. These layers placed on the orthotropic branches could benefit from a supply of rainwater that runs along the branches passing under the tape. In their study, Elomo et al. [22] obtained a higher number of roots in orthotropic oriented layers compared to plagiotropic and oblique orientations on *Dacryodes edulis* (G. Don) H.J. Lam.

Comment [F7]: this is followed by

Comment [F8]: please rephrase, it is not understandable

Comment [F9]: when

Mbète et al. [23] also observed rapid root emission on orthotropic branch in the kola tree (*Cola nitida*). Bonnèhin [24], in turn, asserts that in vegetative propagation, the plagiotropic or orthotropic orientation, as well as the origin of the axes used, affects the rooting capacity of the layers.

The diameter classes of the layered branches are relatively small in terms of their size; this could also be the basis of the high rate of rooting. According to Meunier et al. [12], air layering is more likely to be successful when performed on young branches. In contrast, other studies [25, 26, 27, 28] have shown more significant results on large branches. This could be explained by the fact that for some species, young twigs have a small thickness of bark, cannot accumulate a significant amount of nutritive substances favorable to cellular differentiation towards the rhizogenesis [27, 29].

Zida [30] obtained a success rate of 65 and 71.6% respectively in the median and basal part of the *B. aegyptiaca* stem. These rates are low compared to those observed in this study. This difference is largely due to the installation period of the device; because this author installed his trial of layering in February which corresponds to the dry season in Burkina Faso. Several studies [8, 17, 31] attribute the success of air layers to the trial period, to the age of the plant and to the test environment that would have a significant effect on rhizogenesis. Harivel et al. [29] estimate that the dry season would delay or even inhibit the development of layers, especially in the Sahelian zone where plants return to abscission to limit the loss of water.

The success rate of the layers observed in the present study is also higher than those obtained in several studies on other ligneous species, in particular on *Pterocarpus erinaceus* Poir. [27, 32], *Prosopis africana* (Guill & Perrot) Taub. [18, 33], *Detarium microcarpum* Guill. & Perr. [33], *Coula edulis* Baill. [16], and *Psidium guajava* L. [34]. This is explained by the fact that the rooting potential of the layers depends first of all on the genetic potential of the species or variety, with very marked differences between genera, species and even individuals [35, 36]. In addition to the intrinsic variations of species, environmental, climatic and experimental conditions could explain these differences. The present experiment has shown that the three substrates tested have no influence on the rooting capacity of the layers and on the quality of roots, particularly on the number and the diameter. These results suggest that *B. aegyptiaca* layers can be rooted with several substrates, provided that watering is regularly ensured. In addition, these results testify to the ecological plasticity of the species, particularly to soils, as several authors have pointed out [9, 37].

The assessment of the rate of rooting of layers should not be the only criterion to be taken into account, to qualify a species suitable or refractory to air layering. It is also necessary to take into consideration the survival rate of the layers after weaning. The survival rate

Comment [F10]: could be apostroph

obtained in this study is 68.5% overall, with variations depending on plant diameter. This survival rate may not vary significantly even if the follow-up time is lengthened, because at the end of the observation, all the living plants presented the sign of a good weaning, in particular the formation of the new leaves. The low survival rate observed for plants of diameter [3-4]cm could be related to the imbalance between the volumes of the aerial part, which is very important in relation to the volume of the part of the roots. In addition, transplantation conditions may not be appropriate because in some work [38, 39] weaning of aerial layering plants was initially done in pots prior to transplanting them ~~in~~ to a real environment.

5. CONCLUSION

This study has shown the possibility to multiply *B. aegyptiaca* by air layering in two months, especially those with characteristics considered interesting by the population. The rooting of the layers is also possible on branches 1 to 4 cm in diameter and with substrates easy to find by farmers. In addition, the study has also shown that the propagation of *B. aegyptiaca* by air layering does not require hormones rhizogenesis, sphagnum or moss, inaccessible to farmers because of their high prices and their absence in local markets. The evaluation of the survival rate after transplantation of rooted layers showed that more than half of the plants survived after a month of monitoring. These ~~aspects prospects would allow to add~~ *B. aegyptiaca* to be added to the list of Sahelian woody species that are easily propagated by air layering and at a lower cost.

REFERENCES

1. Ganaba S, Ouadba JM, Bognounou O. Housing construction plants in the Sahel region. Tropical forests and forests. 2004 ; 282 (4), 11-17.
2. Dan Guimbo I, Baragé M, Douma S. Preliminary studies on the food use of wild plants in the peripheral areas of Niger's W Park. Int. J. Biol. Chem. Sci. 2012; 6 (6): 4007-4017.
3. Yaméogo G, Yélémo B, Boussim IJ, Traoré D. Management of the agroforestry park of the Vipalogo terroir (Burkina Faso): contribution of the ligneous to the satisfaction of the needs of the populations. Int. J. Biol. Chem. Sci. 2013; 7 (3), 1087-1105.
4. Agunnd D, Lawali S, Mahamane A, Ala R, Soliño M. Consumer preferences for Baobab Products and the implication for conservation and improvement of forest food resources in Niger (West Africa). Economic Botany. 2018; pp 1-15.

5. Douma S, Chaibou R, Mahamane A, N'da DH, Saadou M. Present state of degradation of the populations of four fruit tree species in the Sahelo-Sudanian zone of Niger: Tamou total fauna reserve. *Rev. Isee. Sci. Technol.* 2010; 16, 191-210.
6. Moupela C. Ecology, population dynamics and economic interests of African hazel (*Coula edulis* Baill.) In Gabon. PhD thesis in Agricultural Sciences and Biological Engineering, University of Liège, Gembloux Agro-Bio Tech. 2013, p 142.
7. Ouedraogo A. Diversity and dynamics of woody vegetation in eastern Burkina Faso. PhD thesis, University of Ouagadougou. 2006; P196.
8. Bellefontaine R, Ferradous A, Alifriqui M, Monteuis O. Vegetative multiplication of the argan tree, *Argania spinosa*, in Morocco: the John Goelet project. *Tropical forests and forests.* 2010; 304 (2), 47-59.
9. Arbonnier M. Trees, shrubs and lianas in dry areas of West Africa. CIRAD - MNHN - IUCN, Montpellier (France). 2000; P541.
10. Abdurhamane H, Morou B, Larwanou M, Mahamane A, Saadou M, Bellefontaine R. Uses and preferences of woody species in two protected forests of Dan Kada Dodo and Dan Gado in Niger. *Journal of Horticulture and Forestry.* 2015; 7 (6), 149-159.
11. Agune D, Douma S, Madrigal J, Gomez-Ramos A, Vinceti B, Alaa R. et al. Conservation of Food Tree Species in Niger: Towards a participatory approach in rural communities. *Forest Systems.* 2016; 25 (3), e080.
12. Meunier Q, Bellefontaine R, Monteuis O. Vegetative propagation of medicinal trees and shrubs for the benefit of rural communities in Uganda. *Tropical forests and forests.* 2008; 295 (2), 71-82.
13. Tchoundjeu Z, Ngo Mpeck ML, Asaah E, Amougou A. The role of vegetative propagation in the domestication of *Pausinystalia johimbe* (K. Schum), a highly threatened medicinal species of West and Central Africa. *Forest Ecology and Management.* 2004; 188, 175-183.

14. Yelemou B, Yameogo G, Rasolodimby JM, Hien V. Sexual germination and developmental dynamics of *Piliostigma reticulatum* (D.C.) Hochst, an agroforestry species from Burkina Faso. *Drought*. 2007; 18 (3): 185-192.
15. Rabiou H, Diouf A, Bationo AB, Mahamane A, Segla KN, Adjonou K, et al. Population structure of natural stand and spatial distribution of *Pterocarpus erinaceus* Poir seedlings. in the Tiogo forest in the Sudanian zone of Burkina Faso. *Int. J. Biol. Chem. Sci.* 2015 ; 9 (1): 69-81.
16. Moupela C, Doucet JL, Dainou K, Meunier Q, Vermeulen C. Sowing and aerial layering tests of *Coula edulis* Baill. and prospects for its domestication. *Woods and forests of the tropics*. 2013; 318 (4), 3-13.
17. Miller Q, Bellefontaine R, Boffa JM, Bitahwa N. Low-cost vegetative propagation of trees and shrubs. Technical handbook for Uganda rural communities; C.I.R.AD. 2006; p66.
18. Abdou L, Karim S, Rabiou H, A. Mahamane Vegetative propagation trial of *Prosopis africana* (Guill. And Perr.) Taub. by air layering under Sudano-sahelian climate in South-central Niger. *Journal of botany*. 2015 ID 286582, p6.
19. Dan Guimbo I, Laminou MO, Rabiou H, Yagi BH, Ambuta KJM. Vegetative propagation by root and stem cuttings of *Leptadenia hastata* (Pers.) Dec., edible Sahelian liana in Niger. *Journal of Research in Forestry, Wildlife & Environment*. 2017; 9 (2): 1-7.
20. Saadou M. Vegetation of drained Nigerian lands east of the Niger River. PhD thesis in Natural Sciences, University of Niamey. 1990 ; P395.
21. Tchiagam NJP, JP Ndzie, Bellefontaine R, Mapongmetsem PM. Vegetative propagation of *Balanites aegyptiaca* (L.) Del., *Diospyros mespiliformis* Hochst. ex. A. Rich. and *Sclerocarya birrea* (A. Rich.) Hochst. north of Cameroon. *Fruits*. 2011; 66 (5): 327-341.
22. Elomo C, Nguénayé B, Tchoundjeu Z, Assah E, Tsobeng A, Avana LM, et al. Vegetative propagation of *Dacryodes edulis* (G. Don) H.J. Lam. by air layering. *Afrika focus*. 27, Special Agroforestry Issue. 2014 ; pp. 41-56.

23. Mbeta P, Makosso S, Lelou B, Douh C, Ngokaka C. 2011. Vegetative multiplication test of Colatier (*Cola nitida*) via the marcotting technique in Congo Brazzaville. *Journal of Applied Biosciences*, 2011; 37: 2485-2490.
24. Bonn  hin L. Peasant Domestication of Forest Fruit Trees: Case of *Coula edulis* Baill. Olacaceae, and *Tieghemella heckelii* Pierre ex A. Chev., Sapotaceae, around the Ta  National Park, Ivory Coast. PhD thesis, Wageningen University, The Netherlands. 2000; p140.
25. Kengue J. Safou (*Dacryodes edulis*): Extensionist Manual. Southampton, United Kingdom, University of Southampton, International Center for Underutilized Crops (ICUC). 2003; p 32.
26. Tchoundjeu Z, Tsobeng AC, Asaah E, Anebeh P. Domestication of *Irvingia gabonensis* (Aubry Lecompte) by air layering. *Journal of Horticulture and Forestry*. 2010; 2, 171-179.
27. Rabiou H., Bationo A.B., Abdou L., Segla K.N., Adjonou K., Kokutse AD. et al. Plant propagation by aerial layering of *Pterocarpus erinaceus*: in the sudanian zone. *International Journal of Recent Advances in Multidisciplinary Research*. 2017 04 (10): 2902-2908.
28. Paluku A., Bwama M., Okungo A. and Van Damme P. Vegetative propagation of *Cola acuminata* (Pal. Of Beauv.) Schott & Endlicher by layering in Kisangani, Democratic Republic of Congo. *Int. J. Biol. Chem. Sci.* 2018; 12 (3): 1141-1150.
29. Harivel A, Bellefontaine R, Boly O. Ability to vegetatively propagate eight forest species of interest in Burkina Faso. *Tropical forests and forests*. 2006; 288 (2): 39-50.
30. Zida AW. Study of the regeneration of *Balanites aegyptiaca* (L.) Del., *Sclerocarya birrea* (A. Rich.) Hochst., And *Diospyros mespiliformis* Hochst. ex A. Rich. Master's thesis in Rural Development, Polytechnic University of Bobo-Dioulasso, Burkina Faso. 2009; p77.
31. Boutherin B, Bron G. Multiplication of horticultural plants. 2nd edition, Paris, TEC and DOC editions. 2002; P248.

32. Ouédraogo H. Population Structure and Regeneration Modes of *Pterocarpus erinaceus* Poir. and other priority species used in handicrafts in western Burkina Faso. Master's thesis in Water and Forests, Polytechnic University, Bobo-Dioulasso, Burkina Faso. 2007; p52.
33. Ricez T. Studies of low-cost regeneration methods of *Prosopis africana* and *Detarium microcarpum* in Dinderesso Classified Forest., Master's Degree II Bioress. in Reg. Too much. and Meditate., University Paris XII Val de Marne, Paris. 2008; p55.
34. Hammasselbé A. Vegetative propagation of guava (*Psidium guayava* L.) under Sudano-Sahelian climate in northern Cameroon. *Tropicultura*. 2005; 23 (2), 105-109.
35. Bellefontaine R, Monteuis O. The sucking of trees outside the forest: a way to partially revegetate the arid and semi-arid Sahelian zones. Vegetative multiplication of forest, fruit and ornamental trees. 2002; pp.135-148.
36. Nanson A. Genetics and improvement of forest trees. The agronomic presses of Gembloux, A.S.B.L. 2004 ; P712.
37. Eyog MO, Ndoye O, Kengue J, Awono A. The edible forest fruit trees of Cameroon. IPGRI. 2006; 204p.
38. Kembelo AOK. 1992. Multiplication by layering of breadfruit *Artocarpus communis* var. *Apyrenna*. *Tropicultura*. 1992; 10 (2), 59-60.
39. Mokhtari M, Kerbernes I, Bouiche L, Benismail MC, Kenny L, Bellefontaine R. Marcottage of the Argan (*Argania spinosa* L. Skeels). Proceedings of the First International Congress of the Argan Tree, Agadir 15 - 17 December; 2011.

Table 1. Number of layers placed per diameter classes and substrates.

Diameter classes (cm)	Substrates			Total
	Sand+manure	Sand+sawdust	Sand	
[1-2[13	15	12	40
[2-3[11	12	13	36
[3-4[13	13	14	40

Total	37	40	39	116
--------------	-----------	-----------	-----------	------------

Table 2. Rooting rate (%) of layers per diameter classes and substrates.

Diameter classes (cm)	substrates			MD
	Sand+manure	Sand+sawdust	Sand	
[1-2[84.6	93.3	83.3	87.0±4.4
[2-3[100	91.6	92.3	94.6±4.6
[3-4[92.3	100	100	97.4±4.4
MS	92.3±7.7	95±4.4	91.8±8.3	93.1

MS: Averages of the three substrates; MD: Averages of the three diameter classes.

Table 3. Average number of roots per diameter classes and substrates.

Diameter classes (cm)	substrates			MD
	Sand+manure	Sand+sawdust	Sand	
[1-2[27.1±13.5	35.7±9.6	38.6±19.4	33.8±15.2a
[2-3[49.6±20.6	44.1±17.8	35.4±10.3	43±16.3ab
[3-4[47.8±7.6	52.2±10.1	51.4±15.8	50.4±1.1b
MS	41.5±1.5a	44±15a	41.8±15.9a	-

For means per substrates (MS) and means per diameter classes (MD), the values followed by the same letter are not different at the 5% threshold.

Table 4. Average values (cm) of root length per diameter classes and substrates (mean ± standard deviation).

Diameter classes (cm)	substrates			MD
	Sand+manure	Sand+sawdust	Sand	

[1-2[13.9±3.4	11.7±2.0	12.3±2.3	12.6±2.9a
[2-3[13.6±2.3	13.1±2.7	12.2±1.9	13±2.4b
[3-4[12.4±2.6	12.1±2.2	12.7±1.6	12.4±2.4a
Ms	13.3±2.9a	12.4±2.5b	12.4±2.0b	-

For means per substrates (MS) and means per diameter classes (MD), the values followed by the same letter are not different at the 5% threshold.

Table 5. Average values (mm) of root diameter per diameter classes and substrates (mean ± standard deviation).

Diameter classes (cm)	substrates			MD
	Sand+manure	Sand+sawdust	Sand	
[1-2[1.6±0.5	2.0±2.5	1.6±0.6	1.7±1.4a
[2-3[2±0.6	1.9±0.4	2.0±0.5	1.9±0.5b
[3-4[2.1±0.7	52±0.6	1.9±0.5	2±0.6b
Ms	1.9±0.6a	1.9±1.8a	1.8±0.5a	-

For means per substrates (MS) and means per diameter classes (MD), the values followed by the same letter are not different at the 5% threshold.

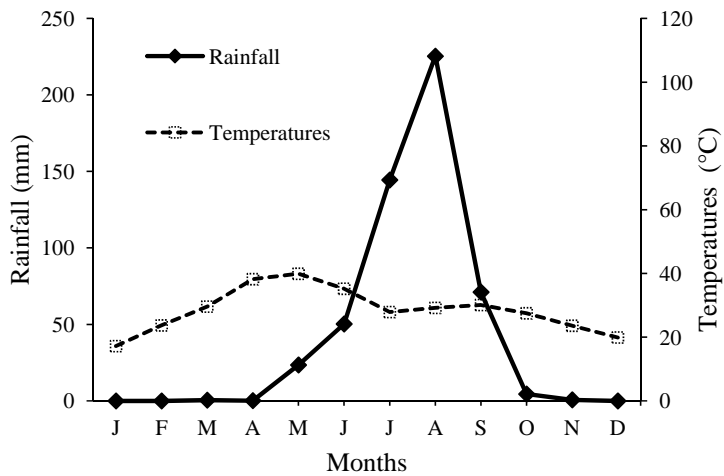


Fig. 1. Ombrothermic diagram of the Zinder meteorological station (monthly averages from 1981 to 2017).



Fig. 2. Establishment of aerial layer *B. aegyptiaca*: (a) Annular incision of the branch; (b) substrate wrapped in the sleeve.

UNDER PEEL



Fig. 3. *B. aegyptiaca* layers harvested for weaning.

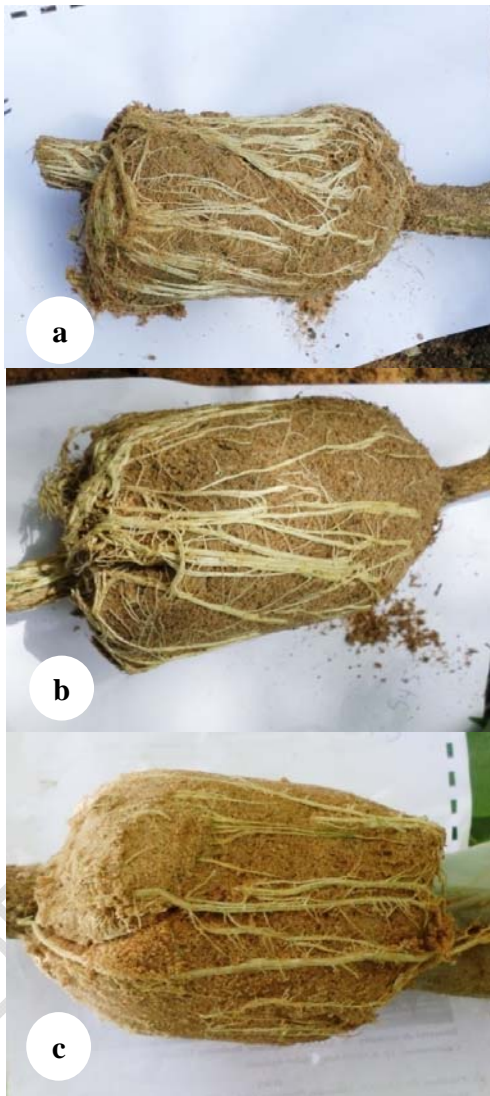


Fig. 4. Roots formed with three substrates: (a) Sand + manure; (b) Sand + sawdust; (c) Sand.

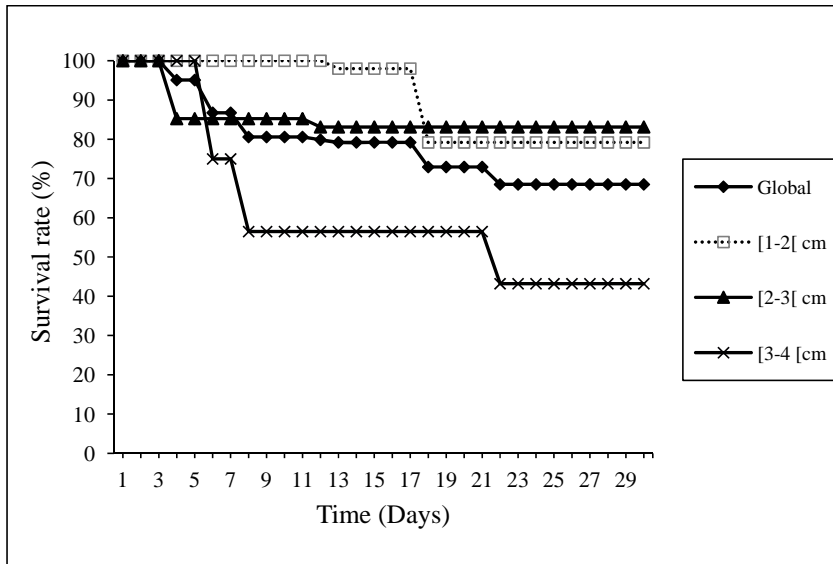


Fig. 5. Evolution of survival rate of plants by diameter classes as a function of time.



Fig. 6. *B. aegyptiaca* plants from aerial layering after transplantation: (a) Well acclimated plant with new leaves; (b) Plant having a transient stress.