

Synthetic Seed Production as a Tool for the Conservation and Domestication of *Celastrus paniculatus*; A Rare Medicinal Plant

Comment [s1]:

ABSTRACT

Comment [s2]: Abstract is clear and well written. Only comment is to avoid abbreviations.

The black-oil tree (*Celastrus paniculatus* Willd) is a highly valued medicinal plant species belong to the Celastraceae family, known as Jyothishmathi in Ayurveda and Duhundu in Sri Lanka and grows as a perennial vine. It is an endangered medicinal plant species recorded in the red list of endangered fauna and flora of Sri Lanka in 1999. The seed oil of *Celastrus paniculatus* contains sesquiterpene alkaloids namely; celapagine, celapanigine, celapanine and celastrol, used in traditional system of medicine for various disorders and because of its high pharmaceutical value, plants are over exploited in natural habitats. Owing to poor seed germination and lack of successful vegetative propagation methods, domestication and commercial planting of this important medicinal plant species to meet the demand seems impossible. Therefore, it is of high importance to develop a reliable and efficient *in vitro* propagation to produce black oil plants for commercial use. In this study, it was attempted to produce synthetic seeds of *Celestrus paniculatus* via *in vitro* multiple shoot proliferation. Nodal segment explants were collected from freshly emerged age of sprouts, surface sterilized and cultured in Murashige and Skoog medium supplemented with different BAP and TDZ concentrations for shoot induction. The highest soot proliferation rate; 25 shoot tips/explant were observed with 0.1 mg/L TDZ. Induced shoot tips were used for synthetic seed production after encapsulating with BAP and NAA enriched sodium alginate. Shoot tip encapsulated beads produced with 4% sodium alginate were firm, clear, round and uniform in size and easy to handle. The influence of growth regulators (BAP and NAA) and storage period on the germination of encapsulated shoot tips was studied to evaluate the success of encapsulated shoot tips as a propagule. The beads germinated with 2 mg/L BAP and 0.2 mg/L NAA provided 80% *in vitro* germination percentage. Shoot tips of synthetic seeds remained green and healthy after storage at 5°C for a period of 8 weeks. Current findings suggest that encapsulated micro shoots (synthetic seeds) could be produced successfully, as the first step in domestication and conservation of *Celastrus paniculatus*. Further studies required on rooting of micro shoots, acclimatization and transferring of plantlets produced from synthetic seeds to *in vivo* conditions for domestication and conservation purposes.

Comment [s3]: Try not to use any abbreviations

34 Key words: *Celastrus paniculatus*, conservation, germination, growth regulators, medicinal
35 plants, synthetic seeds

36 1. INTRODUCTION

37 The black-oil tree (*Celastrus paniculatus* Willd), locally known as Duhundu, Jyotishmati in
38 India belongs to the Celastraceae family, is an endangered medicinal plant species recorded
39 in the red list of endangered fauna and flora of Sri Lanka in 1999, as well as in Indian
40 subcontinent (Martin et al., 2006; Raju and Prasad 2010). This plant is widely used in
41 Ayurveda to cure many diseases such as leprosy, leucoderma, skin diseases, paralysis,
42 depression, arthritis, asthma and fever (Sharma et al., 2001). The seed oil of *Celastrus*
43 *paniculatus* Willd contain sesquiterpene alkaloids namely; celapagine, celapanigine,
44 celapanine and celastrol, used in traditional system of medicine for various disorders. The
45 plants exhibit varying degrees of therapeutic values, some of which are its use in the
46 treatment of cognitive dysfunction, epilepsy, insomnia, rheumatism, gout, dyspepsia
47 (Nadkarni et al., 1976).

48 Because of high pharmaceutical value and lack of domesticated or commercial plantings,
49 plants in natural habitats are over exploited. Owing to poor seed germination and lack of
50 successful vegetative propagation methods, mass propagation of this important medicinal
51 plant species seems impossible. Therefore, it is of high importance to develop a reliable and
52 efficient method for conservation and commercial cultivation of black oil tree (Arya et al.,
53 2001).

54 Conventionally, *C. paniculatus* is propagated mainly through the seeds. However, the
55 viability and germination of the seeds (11.5 %) are poor (Rekha et al., 2005). Thus,
56 alternative approaches such as *in vitro* techniques are highly desirable for large-scale
57 propagation of this medicinally important plant. Polymerization of sodium alginate in calcium
58 chloride (CaCl_2) resulted in the formation of hydrogel capsules with a somatic embryo (SE)
59 or with propagules inside, called artificial seeds (ASs) or synthetic seeds. Artificial seed
60 technology is an implementation of modern plant biotechnology, which offers tremendous
61 potential in micropropagation as well as germplasm conservation of rare, endangered plants
62 along with its easy handling and transportation (Gantait et al., 2015). In this backdrop, the
63 present study was conducted to explore the possibility of multiple shoot proliferation and
64 synthetic seed production of *Celestrus paniculatus* with the aim of initiating commercial
65 cultivation through domestication.

67 2. MATERIAL AND METHODS

69 2.1. Plant material and surface sterilization

Comment [s4]: Introduction effectively presents background information. Overall well-structured and effectively communicated.

Comment [s5]:

Comment [s6]: This section is well explained however again, you should try to avoid abbreviations so any reader can understand. Use full names rather than the abbreviations.

70 Mother plants of *Celestrus paniculatus* are maintained at the Department of Crop Science,
71 Faculty of Agriculture, University of Ruhuna, Sri Lanka under protected house conditions and
72 nodal segment explants (2-4 mm) were collected from freshly emerged sprouts. Explants
73 were washed thoroughly in running tap water and washed with detergent 'Teepol' for 5 min
74 and surface sterilized with 10% Clorox for 10 minutes. The disinfected explants are washed
75 (3-4 washes) with sterile double distilled water to remove traces of sterilant. Nodal segments
76 (3-5 mm) were cultured in Murashige and Skoog (1962) (MS) medium supplemented with
77 different BAP and TDZ concentrations for shoot induction.

78 2.2 Media preparation and culture condition

79 All the experiments were carried out on Murashige and Skoog (1962) basal medium
80 containing 3.0 % (w/v) sucrose as a carbon source and, 0.8% (w/v) agar for gelling was
81 adjusted to 5.8 pH, and sterilized in an autoclave under 15 psi at 121°C. All the equipment
82 and reagents were autoclaved at 121 °C and 15 psi for 15 minutes. The medium was
83 supplemented with various concentrations and combinations of auxin [α -naphthalene acetic
84 (NAA) (0.1 and 0.2 mg/L)], cytokinin [6-benzylaminopurine (BAP) (0.5, 1.0, 1.5 and 2.0 mg/L)
85 and thidiazuron (TDZ) (0.1 and 0.2 mg/L)] for shoot proliferation of nodal segments. All
86 cultures were sub cultured to their respective fresh medium at every 3-week intervals. For
87 the encapsulation of nodal segments, the encapsulation medium (EM) was prepared by
88 slight modification of MS basal medium. The EM is devoid of calcium salt and agar but
89 fortified with 3.0 % sucrose and sodium alginate. For optimizing encapsulation sodium
90 alginate solution was prepared in liquid Murashige and Skoog's (MS) medium at the different
91 weight is to volume concentrations (2-5%). The pH of the medium was adjusted to 5.6 prior
92 addition of sodium alginate. For polymerization calcium chloride (CaCl_2) solutions of 100
93 mmolL^{-1} strength was prepared in double distilled water. To test the regeneration and
94 germination of artificial seeds combinations of NAA and BAP were used. All cultures were
95 incubated at $25 \pm 2^\circ \text{C}$ with 16/8h photoperiod under the white fluorescent light.

96 2.3 Shoot induction and Proliferation

97 All the surface sterilized explants (3-5 mm) were cultured MS medium supplemented with
98 two different concentrations (0.1 and 0.2 mg/L) of NAA in combination with 6-BAP (0.5-2.0
99 mg/L) and TDZ (0.1 and 0.2 mg/L) as shown in table 1. All the cultures were incubated
100 under $25 \pm 2^\circ \text{C}$ with 16/8h photoperiod under the white fluorescent light. The percentage of
101 shoot induction, number of shoots per explant were obtained after 12 days and shoot
102 proliferation rate was recorded at weekly intervals for ten weeks.

Comment [s7]: This section looks good.

Comment [s8]: Try to avoid using any abbreviations so readers can understand.

2.4 Synthetic Seed Preparation

In vitro produced nodal segments [(4±1) mm long),] were drenched for 10 minutes with autoclaved sterilized 2%, 3%, 4% and 5% (w/v) Sodium alginate (NA) gelling matrix dissolved in calcium-free 1/2 MS liquid medium. For the development of artificial seeds, the aliquots (0.2 mL approx.) of NA solution, each containing single micro shoot (nodal segment), were taken aseptically by a Pasteur pipette (5 mm diameter) and softly dropped one by one in 100 mmolL⁻¹ autoclaved CaCl₂·2H₂O (CC) liquid. For optimum polymerization, the droplets were kept for 30 minutes in CC with constant agitation to allow absolute polymerization. Polymerization can be measured apparently as the artificial seeds become translucent instantly next to the formation and then displays an opaque nature as the polymerization proceeds (Javed et al., 2017). The CC solution was then decanted and the artificial seeds were double washed with sterile water. Immediately after, the beads were surface dried by blotting on filter paper. The bead formation was compared after a complexion time of 30 min for all the treatments. The artificial seeds were kept under appropriate incubating conditions.

2.5 Culture Conditions and Synthetic seed germination

Encapsulated and non-encapsulated nodal segments were kept in petri dishes sealed with paraffin film and kept in three different temperature regimes ((5 ± 1) °C, (15 ± 1) °C, and (25 ± 1) °C) without illumination. For storing at (5 ± 1) °C, tubes were kept in the refrigerator, for (15 ± 1) °C in an incubator whereas for (25 ± 1) °C the tubes were maintained in culture room.

These were tested for germination competence on regeneration media in culture tube, after every two weeks (up to 8 weeks) on ½ MS medium having 3% sucrose (w/v) supplemented with two different concentrations (0.1 and 0.2 mg/L) of NAA in combination with 6-BAP (1.0-5.0 mg/L) and were maintained for 6 weeks at 24 ± 2 °C and 55–65% relative humidity with 16/8 h light and dark period, light was provided by cool fluorescent white lamps (Table 2).

2.5. Statistical assessment

Experimentations were replicated twice comprising 5 samples for each replication following completely randomized design. Data were statistically assessed through One-way analysis of variance (ANOVA). Treatment data (Means ± SE) were evaluated based on Duncan's multiple range test (DMRT) (Duncan, 1955) (P ≤ 0.05) through SAS 9.4 software.

3. RESULTS AND DISCUSSION

3.1 *In vitro* shoot induction and proliferation

A simple and effective protocol was developed for the *in vitro* micro propagation of *Celestrus paniculatus*. Immature nodal segments were cultured on MS medium containing different concentrations of BAP and NAA to evaluate their effects on shoot initiation. Explants showed varying success in shoot initiation depending on the growth regulators added. The response of explants cultured in MS media supplemented with BAP, NAA and TDZ are shown in Table 1.

Table 1. Effect of plant growth regulators on shoot induction of explants (after 12 days) and average no of shoots (after 9 weeks) of culture

| Growth regulator concentration (mg/L) | | | Shoot induction (%) | Average number of shoots/explant |
|---------------------------------------|-----|-----|---------------------|----------------------------------|
| NAA | BAP | TDZ | | |
| 0.1 | 0.5 | - | 70.4 | 16.0 ± 0.02 ^g |
| 0.1 | 1.0 | - | 76.2 | 17.2 ± 0.01 ^f |
| 0.1 | 1.5 | - | 80.8 | 18.0 ± 0.04 ^e |
| 0.1 | 2.0 | - | 97.8 | 25.2 ± 0.02 ^a |
| 0.2 | 0.5 | - | 66.8 | 13.2 ± 0.04 ^h |
| 0.2 | 1.0 | - | 82.4 | 20.6 ± 0.07 ^d |
| 0.2 | 1.5 | - | 85.2 | 22.8 ± 0.02 ^c |
| 0.2 | 2.0 | - | 85.2 | 20.8 ± 0.06 ^d |
| 0.0 | 0.0 | 0.1 | 88.2 | 24.4 ± 0.06 ^b |
| 0.0 | 0.0 | 0.2 | 92.4 | 25.0 ± 0.01 ^a |

Means in each column followed by the same superscript letters are not significantly different according to DMRT at $P < 0.05$.

Bud break was observed for the explants cultured on MS medium containing cytokinins (BAP or TDZ) after 12 days. The increased level of BAP resulted in significantly higher shoot initiation and the number of shoots at the initiation stage, with a constant level of NAA.

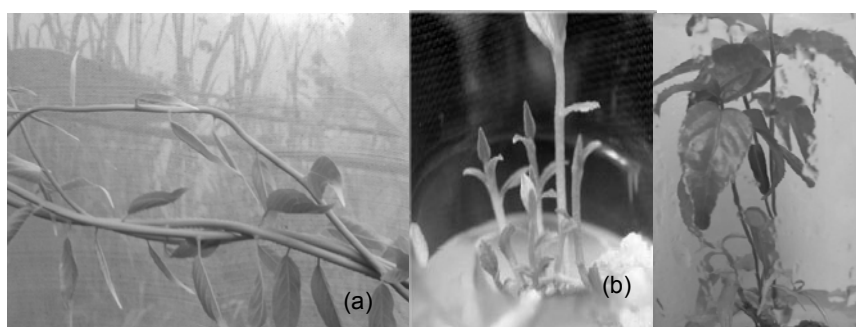
Comment [s9]:

Comment [s10]: Discussion is well structured and thought out. Results are clear and easy to understand.

Comment [s11]: This section looks good

Comment [s12]: Try to avoid abbreviations.

160 Although bud break was dependent on BAP supply, the synergistic combination of BAP and
 161 NAA induced the optimum frequency of shoot formation as well as shoot number. The
 162 highest rate of shoot induction (97.8%) which was significantly different from all other
 163 hormonal combinations used at 5% significant level and highest number of shoots per
 164 explant (25.2) were obtained in MS medium supplemented with 2.0 mg/l BAP + 0.1 mg/L
 165 NAA after nine weeks of nodal culture (Table 1). Therefore 9th week is the best period to get
 166 an optimum number of shoots from nodal segments. Furthermore, Seyoum & Mekbib (2014)
 167 reported that the cotyledonary node explants of Yeheb (*Cordeauxia edulis*) cultured on MS
 168 medium supplemented with 2.0 mg/L BAP resulted in the highest rate of shoot initiation (89
 169 %) and the highest number of shoots per culture after nine weeks. Considering about the
 170 effect of TDZ, the highest shoot proliferation rate; 25.0 shoot tips/ explant was observed with
 171 0.2 mg/L TDZ which was not significantly different with the hormonal combination 2.0 mg/L
 172 BAP + 1.0 mg/L NAA after nine weeks of nodal culture at 5% significant level. Nodal
 173 explants of *Rauvolfia tetraphylla* cultured on MS + 5 µM TDZ has given optimal (90%)
 174 regeneration response for maximum (9.2 ± 1.20) shoot production (Ahmad & Faisal 2018).
 175 Repeated transfer of the cultures was suggested as an efficient technique for rejuvenation
 176 and reinvigoration of *in vitro* cultures (Sanchez et al., 1997), which was further supported by
 177 subsequent reports on different plants (Phulwaria et al., 2012b). The importance of plant
 178 growth regulators on shoot propagation has been highlighted in various studies. Consistent
 179 with this result, Daneshvar et al. (2013) reported that 2.5 mg/L BAP + 0.15 mg/L NAA in MS
 180 medium produced the highest number of *Aloe vera* plantlets (up to 28.47 plantlets per
 181 explant).



182
 183
 184 Figure 1. Stages of multiple shoot induction of *C. paniculatus*. (a) Mother plant (b) Multiple shoot
 185 induction (c) proliferated shoots

186 187 3.2 Effect of alginate and calcium chloride concentration on Bead formation 188

Formation of beads with appropriate texture is the key for producing effective synthetic seeds. The stability and hardness are the main two factors affecting the effectiveness of these seeds because very hard beads limit the germination ability while fragile beads limit the handling. NA was chosen for encapsulation because of its minimal toxicity to micro propagules and its rapid gelatinization. The hardness and firmness of the beads depending on the ion exchange of Na^+ and Ca^{2+} during complexing. Thus, to obtain effective synthetic seeds, concentrations of sodium alginate and calcium chloride and the complexing time needs to be standardized (Rai et al., 2009). The present investigation shows that the polymerizing ability of synthetic seeds varied markedly at different concentrations (2-5%) of NA when used to encapsulate the nodal segments. Out of the four different concentrations of NA (2–5 %), evaluated to develop an encapsulation matrix most appropriate for short-term storage and maximum regeneration.

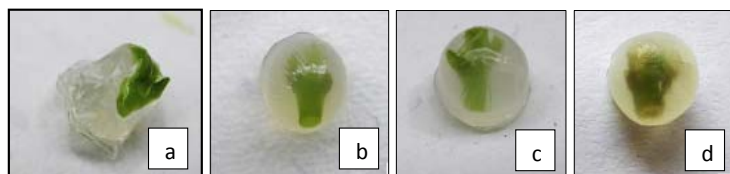


Figure 2. Influence of CaCl_2 and Na-alginate on the shape and consistency of artificial seeds (encapsulated *in vitro*-derived nodal segments) of *Celastrus paniculatus* Wild. a: with 2% NA; b: 3% NA; c: 4% NA; d: with 5% NA

Comment [s13]: Figure is needed, clear, and well written.

Lower concentrations resulted in weak structures with no definite shape and disintegrated while handling. Very firm, clear, isodiametric beads of viable, uniform size and shape, were obtained at and above the concentration of 3% NA upon complexation with 100 mmolL^{-1} CC. It was reported by several researchers that 3 % sodium alginate with 100 mmolL^{-1} CC was the most ideal combination for synthetic seed production (Sharma et al. 2013). The beads produced with 4% NA concentration were firm, clear, round and uniform in size and easy to handle. (Figure 2.C). The results obtained are in agreement with earlier reports in other species (Javed et al., 2017) & (Gantait et al., 2017).

3.2. Regeneration and Germination of Synthetic Seeds

Synthetic seeds developed using 2, 3, 4, and 5% NA were tested for their regenerating ability on the regeneration medium as mentioned above. Maximum regeneration was recorded in synthetic seeds developed using 4% NA, while the regeneration was significantly

less in seeds encapsulated with 5% NA solutions respectively. Similar observations have also been reported by (Alatar et al., 2017). In our observations, levels on NA lower or higher than 4% resulted in either too pliable or too firm artificial seeds or subsequently reduced conversion frequencies. The combination of BAP (3.0 mg/L) and NAA (0.1 mg/L and 0.2 mg/L) produced maximum regeneration percentage and a maximum number of shoots (Table 2). However, only shoots immersed and rooting was not observed.

Table 2. Germination percentage and number of shoots produced from synthetic seeds produced from *Celastrus paniculatus* Willd

| NAA (mg/L) | BAP (mg/L) | Germination Percentage | Shoot No. |
|------------|------------|---------------------------|--------------------------|
| 0.1 | 0.5 | 85.57± 0.59 ^{de} | 1.26± 0.01 ^e |
| 0.1 | 1.0 | 87.83± 1.00 ^{cd} | 1.86± 0.05 ^c |
| 0.1 | 1.5 | 89.46± 0.69 ^{bc} | 1.48± 0.02 ^d |
| 0.1 | 2.0 | 94.43± 0.74 ^a | 2.38± 0.10 ^a |
| 0.1 | 2.5 | 85.00± 1.00 ^e | 1.13± 0.06 ^{ef} |
| 0.1 | 3.0 | 71.18± 1.04 ^h | 0.99± 0.01 ^f |
| 0.2 | 0.5 | 74.13± 0.42 ^g | 1.20± 0.05 ^e |
| 0.2 | 1.0 | 80.53± 0.57 ^f | 1.25± 0.02 ^e |
| 0.2 | 1.5 | 68.57± 0.39 ⁱ | 1.00± 0.02 ^f |
| 0.2 | 2.0 | 62.08± 1.01 ^j | 0.97± 0.01 ^f |
| 0.2 | 2.5 | 89.27± 1.10 ^c | 1.29± 0.01 ^e |
| 0.2 | 3.0 | 91.87± 0.90 ^b | 2.20± 0.1 ^b |

Means in each column followed by the same superscript letters are not significantly different according to DMRT at $P < 0.05$.

BAP has been documented as one of the most potent cytokinins among others (Arab et al., 2014), effectively induced organogenesis in several species like *Euphorbia cotinifolia* (Perveen et al., 2013). Combination of BAP with different auxins evoked a different response from the tissues, NAA assisted in enhancing adventitious shoots. The difference in response could be attributed to different levels of NAA has been frequently reported to augment adventitious shoot generation along with cytokinins.



Figure 3. *In vitro* germination percentage of *Celastrus paniculatus* synthetic seeds.

Comment [s14]: Figure is well presented, however more explanation of the figure may be needed.

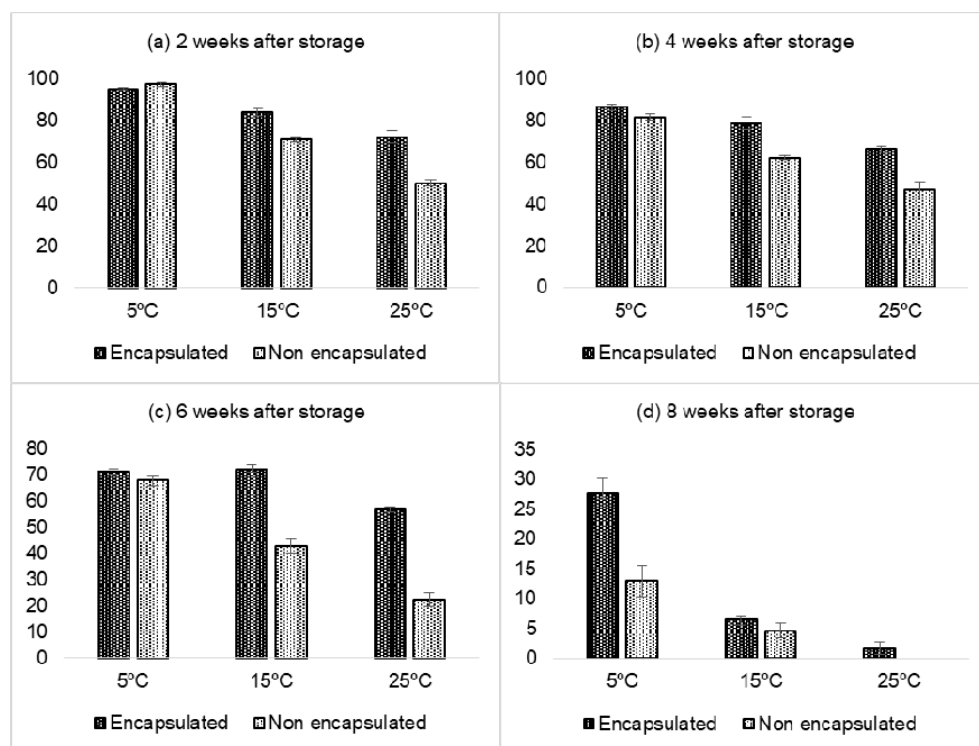
3.4 Effect of encapsulation on storage time

Comment [s15]: This section is clear, well written. Good demonstration of knowledge.

One of the most important objectives of synthetic seed formation is to increase the storability of the propagules. Therefore, the regeneration ability of the somatic tissues of *Celastrus paniculatus* stored in encapsulated and non-encapsulated forms at different storage temperatures and storage periods were tested. It was evident from the Figure 4, that the conversion of artificial seeds after each every two weeks (up to 8 weeks) of storage duration at temperatures (5 ± 1) °C, (15 ± 1) °C and (25 ± 1) °C varied markedly relying on the storage environment. Encapsulation was found very effective in maintaining the regeneration potential of the tissue. The regeneration potential remained unaffected up to 4 weeks of storage in 5 ± 1 °C with 86% of germination frequency, beyond which a decrease in conversion rate was, recorded (Figure 4). However, even after 8 weeks of cold storage at 5 ± 1 °C, 27.6% of synthetic seeds showed regeneration while non-encapsulation nodal segments could not produce any shoots. Similar observations were obtained for the artificial seeds of *Erythrina variegata* which could be stored up to 8 weeks without lowering the germination ability(Javed et al., 2017). There are reports supporting the higher conversion efficiency of synthetic seeds when stored at 5 ± 1 °C. Ikhlq et al., (2010) reported a promising degree of interaction between cold storage at 5 ± 1 °C and storage up to 45 days for regrowth percentage as well as root and shoot development in olive. After 8 weeks of storage browning of seeds were observed and did not observe any germination. It was observed that the longer storage drastically decreases the conversion frequency, regardless of stored temperature, mainly might be due to the continuation of metabolic events in encapsulated micro shoots and accumulation of secondary metabolites in the matrix causing browning there by limiting the storage potential of the artificial seeds. Encapsulation matrix

reduces the dehydration of the tissue and limits oxidation of phenolic compounds, thus, reducing cell death and sustaining the regeneration potential of the tissue up to a longer duration than the non-encapsulated tissues. Our results agreed on the findings of Alatar et al., (2016).

Figure 4. Conversion responses of encapsulated and non-encapsulated nodal segments of *Celastrus paniculatus* Willd at two weeks intervals



Comment [s16]: Figure is effective in explaining the discussion. Good explanation so the reader knows what they are seeing.

4. CONCLUSION

Current findings suggested that nodal segments cultured on MS medium with 0.1 mg/L TDZ showed highest multiple shoot induction in *Celastrus paniculatus*. The firm, round shaped and easy to handle beads produced with 4% Na Alginate with 100 mmolL⁻¹ CC. Shoot tips of synthetic seeds remained green and healthy after storage at 5°C for a period of 8 weeks. Current findings suggest that encapsulated micro shoots (synthetic seeds) could be produced successfully, as the first step in domestication and conservation of *Celastrus paniculatus*. Further studies required on rooting of micro shoots and acclimatization of plantlets produced from synthetic seeds to *in vivo* conditions for domestication and conservation purposes.

Comment [s17]: Conclusion is well written however try to be less repetitive in explaining the results.

REFERENCES

Comment [s18]: Make sure references match use in the discussion and are properly formed.

- Ahmad, N. & Faisal, M., 2018. Thidiazuron: From urea derivative to plant growth regulator. *Thidiazuron: From Urea Derivative to Plant Growth Regulator*, 1–491.
- Ahmad, N. & Anis, M. Biol Plant (2010) 54, 748. <https://doi.org/10.1007/s10535-010-0134-8>
- Alatar, A.A. et al., 2017. Two-way germination system of encapsulated clonal propagules of *Vitex trifolia* L.: an important medicinal plant. *Journal of Horticultural Science and Biotechnology*, 92(2), 175–182. Available at: <http://dx.doi.org/10.1080/14620316.2016.1234949>.
- Arab, Mohammad & Yadollahi, Abbas & Shojaeiyan, Abdolali & Shokri, Saber & Maleki Ghoghah, Shores. (2014). Effects of nutrient media, different cytokinin types and their concentrations on in vitro multiplication of G×N15 (hybrid of almond×peach) vegetative rootstock. *Journal of Genetic Engineering and Biotechnology*, 12, 81-87. 10.1016/j.jgeb.2014.10.001.
- Arya V., Singh R.P. and Shekhawat, S.N. (2001). A micropropagation protocol for mass multiplication and off-site conservation of *Celastrus paniculatus* - A vulnerable medicinal plant of India, *J. Sust. Forest*. 14 (1), 107-120.
- Gantait, S., Vijayan, J. & Majee, A., 2017. Artificial Seed Production of *Tylophora indica* for Interim Storing and Swapping of Germplasm. *Horticultural Plant Journal*, 3(1), 41–46. Available at: <http://dx.doi.org/10.1016/j.hpj.2017.06.004>.
- M. Ikhlq, IA. Hafiz, M.Micheli, T.Ahmad - In vitro storage of synthetic seeds: Effect of different storage conditions and intervals on their conversion ability *Afr J Biotechnol*, 2010;9(35), 5712-5721.
- Javed, S.B. et al., 2017. Synthetic seeds production and germination studies, for short-term storage and long distance transport of *Erythrina variegata* L._ A multipurpose tree legume. *Industrial Crops & Products*, 105(December 2016), 41–46. Available at: <http://dx.doi.org/10.1016/j.indcrop.2017.04.053>.
- Martin G, Geetha SP, Raja SS, Raghu AV, Balachandran I, Ravindran PN. An efficient micropropagation system for *Celastrus paniculatus* Willd: a vulnerable medicinal plant. *Journal of Forest Research*. 2006;11, 461–465.
- Murashige, T. and Skoog, F., 1962. A revised medium for rapid growth and bio assays with tobacco tissue cultures. *Physiologia Plantarum*, 15(3), 473-497.

317 Nadkarni K.M, Nadkarni A.K. Nadkarni KM. 7th. Vol. 1. Popular Bombay Prakashan Pvt. Ltd;
318 1976. Indian materia medica; 296.

319 Perveen, S, Javed, S.B., Anis, M. et al. Acta Physiol Plant (2013) 35: 3391.
320 <https://doi.org/10.1007/s11738-013-1374-y>

321 Raju NL, Prasad MNV. Influence of growth hormones on adventitious root formation
322 in semi-hardwood cuttings of *Celastrus paniculatus* Willd.: a contribution for
323 rapid multiplication and conservation management. Agroforestry
324 Systems. 2010; 79:249–252.

325 Rekha K, MK Bhan, SN Kak and S Pal, (1998). Efficacy of chemical treatments in
326 enhancing germination in *Celastrus paniculatus*. Indian J Plant Physiol., 3(1):
327 73-75.

328 Seyoum, Y. & Mekbib, F., 2014. In vitro germination and direct shoot induction of Yeheb (
329 *Cordeauxia edulis* Hemsl .), 3(6), 452–458.

330 Sharma, P.C., Yelne M.B. and Dennis, T.J. (2001). Database on Medicinal Plants used in
331 Ayurveda. Vol. 2, Central Council for Research in Ayurveda and Sidda. Janakpori,
332 New Delhi.

333 Sharma, S., Shahzad, A. & Teixeira da Silva, J.A., 2013. Synseed technology-A complete
334 synthesis. *Biotechnology Advances*, 31(2), 186–207. Available at:
335 <http://dx.doi.org/10.1016/j.biotechadv.2012.09.007>.