

## Short communication

# ***Henosepilachna vigintioctopunctata* (Coleoptera: Coccinellidae: Epilachninae) attacking cultivated and wild crops in Brazil**

### ABSTRACT

*Henosepilachna vigintioctopunctata* was recorded on *Solanum melongena* L. for the first time in cultivated crops areas in Espírito Santo State, southeastern Brazil, in the first semester of 2017. In a one-year research, *H. vigintioctopunctata* was recorded in eight host plants, host of the families *Amaranthaceae* and *Solanaceae*. These new records represent a high potential establishment of this pest in Brazil.

Key words: 28-spotted lady bird beetle, Hadda beetle, *Solanaceae*, *Solanum melongena*, **Phytophagy**,

**Plant Protection.**

### 1. INTRODUCTION

*Henosepilachna vigintioctopunctata* (Fabricius, 1775) (Coleoptera: Coccinellidae: Epilachini), the 28-spotted lady bird beetle or Hadda beetle has been reported as one of the most important pest of cultivated and wild *Solanaceae* and *Cucurbitaceae* plants in Asia, with records as pest in China [1], India [2-4], Indonesia [5,6], Japan [7,8] and Pakistan [9] and in Oceania, with records in Australia [10]. Cultivated plants in these regions include eggplants, potatoes, tomatoes, tobacco and cucumbers.

In Western Hemisphere, the first record of *H. vigintioctopunctata* was made in 1990 in Curitiba, Paraná State, Brazil, in an unidentified wild cucurbit. In 1991, it was detected in Paranaguá, on *Piper nigrum* L. (Piperaceae) and in 1992, in Itajaí, Santa Catarina State, on *Solanum americanum* Mill. (*Solanaceae*) [11]. On the three mentioned records, only adults were reported. *Henosepilachna vigintioctopunctata* was probably introduced from Port of Paranaguá, Paraná State (L.M. Almeida, personal communication).

In 2002, adults and larvae were over again collected in *S. americanum* in Itajaí. In 2010, all development stages of *H. vigintioctopunctata* were collected on *Brugmansis suaveoleus* (Humb. and Bonpl. ex Willd.) (*Solanaceae*) in Campinas and São Paulo, São Paulo State [12].

During field researches at Instituto Federal do Espírito Santo, Campus Itapina, in Colatina, Espírito Santo State, in the first semester of 2017, adults and larvae were observed attacking eggplants *Solanum melongena* L. (*Solanaceae*). New records were made through one year in different host plants. Adults and larvae collected in July, 2018, in Colatina, in eggplants were sent to Dra. Lucia Massutti Almeida, Department of Zoology, Federal University of Paraná (UFPR), Curitiba, Brazil, to species identification. Vouchers specimens were deposited in Entomology Collection Prof. Dr. Pe. Jesus Santiago Moure, UFPR.

In a one-year survey, *H. vigintioctopunctata* was recorded in eight host plants, host of the families *Amaranthaceae* and *Solanaceae*, five of them with all development stages of the pest (Table 1).

**Comment [UdW1]:** Describe the methodology and results with more details. How was the survey done, in a random way, directed samplings? How many insects were collected on each host, larvae, pupae, eggs, adults? When only adults were found, they were feeding and doing damage to the plant? Only in this way and if it was not an occasional find, a new plant family could be considered a new host for this insect.

46

47 | **Table 1. Host plants and development stages of *Henosepilachna vigintioctopunctata* found in**  
 48 | **Espirito Santo, Brazil, July 2017-Agost 2018.**

Botanical family	Host plant	Development stage found			
		Egg	Larva	Pupa	Adult
Amaranthaceae	<i>Amaranthus viridis</i> L.	A	A	A	P
Solanaceae	<i>Brugmansia suaveolens</i> (Willd.)	P	P	P	P
	<i>Physalis angulata</i> L.	P	P	P	P
	<i>Solanum aethiopicum</i> L.	P	P	P	P
	<i>Solanum lycopersicum</i> L.	A	A	A	P
	<i>Solanum melongena</i> L.	P	P	P	P
	<i>Solanum nigrum</i> L.	P	P	P	P
	<i>Solanum paniculatum</i> L.	A	A	A	P

49 | P – present, A – absent.

50

51

52 | Attacked leaves showed typical symptoms mentioned to *H. vigintioctopunctata*, characterized by  
 53 | a network aspect due to scraped occasioned by larval and adults (Fig. 1.). According to [Mohanchander et](#)  
 54 | [al.\[13\]](#), in *S. melongena* leaves, larvae feed on phloem, epidermal and parenchymal tissues, while adults  
 55 | scraped upper and lower sides of the leaves [13]. [In India, the production of eggplant fruits to field was](#)  
 56 | [reduced up 60%](#)**Fruit reduction up to 60% in eggplants field has been reported in India** [14].

Comment [UdW2]: Adults were found feeding and causing damage to the host

Formatted: Font color: Red

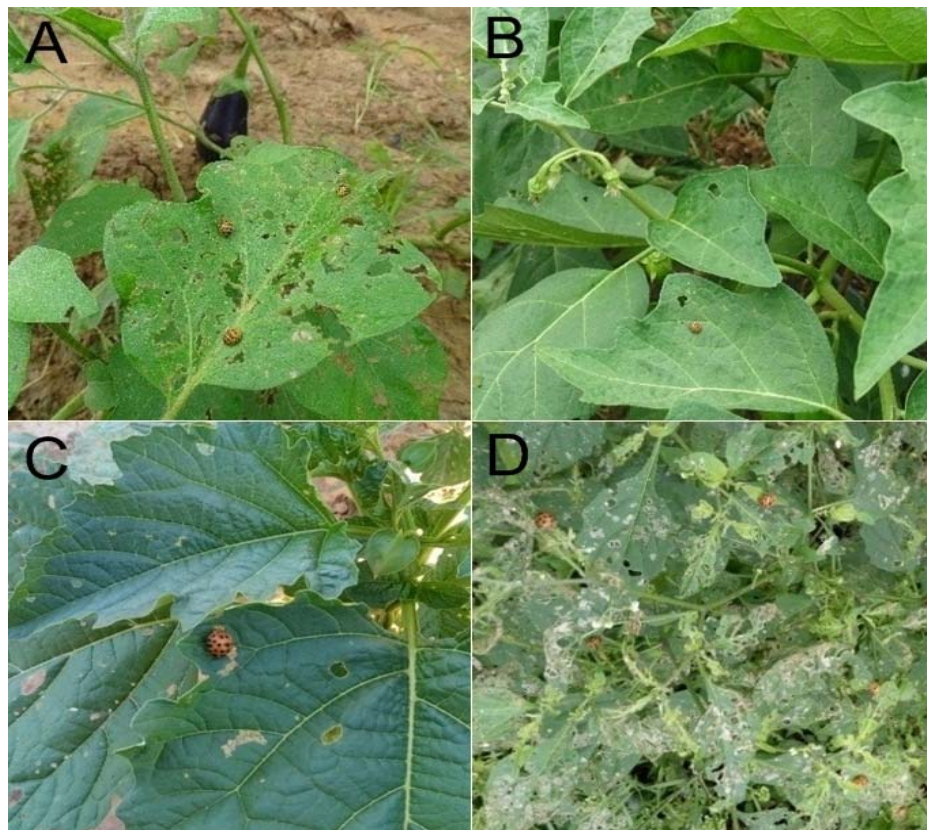
Comment [UdW3]: Adults were found feeding and causing damage to the host

Formatted: Font color: Red

Comment [UdW4]: Adults were found feeding and causing damage to the host

Formatted: Font color: Red

Formatted: Font: Italic



57

58 **Fig. 1. Attacked plants for *Henosepilachna vigintioctopunctata*: *Solanum melongena* L. (A),**  
 59 ***Solanum aethiopicum* L. (B), *Physalis angulata* L. (C) and *Solanum nigrum* L. (D) in Espirito Santo,**  
 60 **Brazil, July 2017-Agost 2018.**

61

62 **2. Conclusion**

63 Since its first record, *H. vigintioctopunctata* has not been mentioned in the list of quarantine pests  
 64 of the Ministry of Agriculture. The new records of this present study, up to 1000 km from the first  
 65 occurrence in Brazil, in agriculture areas and in eight hosts, represents a high potential of establishment  
 66 of this pest in Brazil. The Brazilian Association of Seed and Seedling Trade (ABCSEM) estimated 820  
 67 thousand hectares of vegetable crop in 2016. Eggplant production has increased in Brazil in last year  
 68 mainly due to its medicinal importance. Thus, efforts to avoid the spread of *H. vigintioctopunctata*  
 69 should be made.

70

71 **COMPETING INTERESTS DISCLAIMER:**

72 **Authors have declared that no competing interests exist. The products used for this**  
 73 **research are commonly and predominantly use products in our area of research and**  
 74 **country. There is absolutely no conflict of interest between the authors and producers of**

75 the products because we do not intend to use these products as an avenue for any  
76 litigation but for the advancement of knowledge. Also, the research was not funded by  
77 the producing company rather it was funded by personal efforts of the authors.

78

## 79 References

- 80 1. Zhou L, Xie BG, Wang, Wang XP. Population dynamic of *Henosepilachna vigintioctopunctata* in  
81 different host plants in Jiangnan plain. China J. Northern Hort. 2015;11:103; 11:103–105 (in Chinese).
- 82 2. Rajagopal D, Trivedi TP, TP. Status bioecology and management of *Epilachna beetle*, *Epilachna*  
83 *vigintioctopunctata* (Fabricius) (Coleoptera: Coccinellidae) on potato in India: A review. Trop. Pest  
84 Management. 1989;35(4):410-413.
- 85 3. Bhagat KC, Munshi SK. Host preference of spotted leaf eating leaf-eating beetle, *Henosepilachna*  
86 *vigintioctopunctata* (Fabricius) on brinjal varieties. Pest Management and Economic Zoology. 2004;12:77;  
87 12:77-81.
- 88 4. Jamwal VVS, Ahmad H, Sharma D. Host biology interactions of *Epilachna vigintioctopunctata*  
89 (Fabricius). The Bioscan. 2013;8(2):513-517.
- 90 5. Nakamura K, Abbas I, Hasyim A. Population dynamics of the phytophagous lady beetle *Epilachna*  
91 *vigintioctopunctata* in an eggplant field in Sumatra. Researches on Population Ecology. 1988; 30:25-41.
- 92 6. Katakura H, Nakano S, Kahono S, Abbas I, Nakamura N. Epilachnine Ladybird Beetles (Coleoptera:  
93 Coccinellidae) of Sumatra and Java., Tropics. 2001;10; 10(3): 325-352.
- 94 7. Hirano K. Study on the movements of the 28-spotted lady-beetle *Henosepilachna*  
95 *vigintioctopunctata* by the mark-recapture method. Applied Entomology and Zoology. 1985;29:7;1985;  
96 29:7–13 (in Japanese).
- 97 8. Hirano K. Population Dynamics of a phytophagous Lady-beetle Lady beetle, *Epilachna*  
98 *vigintioctopunctata* (Fabricius) (Coleoptera: Coccinellidae), Living in Spatio-temporally Heterogeneous  
99 Habitats: II. Seasonal Changes in Adult Movement and Spatial Distribution of the Population. Applied  
100 Entomology and Zoology. 1993;28; 28(2):131.
- 101 9. Naz F., Inayatullah M., Rafi MA., Ashfaq M., Ali A. *Henosepilachna vigintioctopunctata* (Fabricius)  
102 (Epilachninae: Coccinellidae) its taxonomy, distribution and host plants in Pakistan. Sarhad Journal of  
103 Agriculture of Agriculture. 2012; 28(3):421-427.
- 104 10. Richards AM. The *Epilachna v. Vigintioctopunctata* Complex (Coleoptera: Coccinellidae). International  
105 Journal of Entomology. 1983; 25:11-41.
- 106 11. Schroder RFW., Athanas MM., Pavan C. *Epilachna vigintioctopunctata* (Coleoptera: Coccinellidae),  
107 new record for Western Hemisphere, with a review of host plants. Entomological News. 1993;104;  
108 104(2):111-112.
- 109 12. Casari SA., Teixeira EP. Immatures of *Epilachna chevrolat* (Coleoptera: Coccinellidae, Epilachninae).  
110 Revista Brasileira de Entomologia. 2015; 59:113-120.
- 111 13. Mohanchander P, Reegan AD, Rahman MA, Raveen RS, Mohanchander, Ponnuvel et al. Effect of Hadda  
112 beetle, *Epilachna vigintioctopunctata* Fab. (Coleoptera: Coccinellidae) infestation on eggplant leaf  
113 (*Solanum melongena* L.) and bio-control potential of essential oil formulations. Pakistan Journal of  
114 Biological Sciences. 2013;16:991-997.
- 115 14. Mall NP., Pandey RS., Singh SV., Singh SK. Seasonal incidence of insect pests and estimation of the  
116 losses caused by shoot-and-fruit borer on brinjal. Indian Journal of Entomology. 1992; 54(3):241-247.

Comment [UdW5]: The journal name must be abbreviated, see the author guide for JEAI

Formatted: Font: Italic

Formatted: Spanish (Spain, International Sort)

Formatted: No underline, Font color: Auto

Formatted: No underline, Font color: Auto

Formatted: No underline, Font color: Auto

Formatted: No underline, Font color: Auto

Formatted: No underline, Font color: Auto

Formatted: No underline, Font color: Auto

Formatted: No underline, Font color: Auto

Formatted: No underline, Font color: Auto

Formatted: Font: Italic, No underline, Font color: Auto