

Road Condition Monitoring of Major and Minor
Route in Part of Ibadan Metropolis Using Geo-
Spatial Approach

ABSTRACT

Major and minor road conditions of part of Ibadan metropolis was assessed with the aim of analyzing the effectiveness and efficiency of the road network system. The major objectives of the study is to locate and identify the road networks within the study area, evaluate the road conditions such as area with defects such as potholes and crack, evaluate the features that observe and did not observe the right of way using geospatial approach. Single frequency Hi-target differential global positioning system (DGPS), a steel tape was used for field observations and measurements. Google earth satellite imagery was used to determine the route and spatial location of potholes and cracks within the study area. Generally from the study, it revealed a total number of 81 potholes, 29 cracks and the result from the right of way showed that none of the features observed the specification of right of way thou, some of those features exists before converting the road into two lanes for easy passage and flow of vehicle in order to avoid constant traffic congestions. Therefore, proper monitoring should be done by State and local government agency in charge of road construction/maintenance in order to avoid improper location of features by an individual, corporate organization etc. along both the major and minor route from time to time and adequate checking on roads.

Keywords: Transportation Network, road condition, right of way, effectiveness, specifications

1. INTRODUCTION

Transportation is important in physical and economic development of towns and cities all over the world. Road tends to increase in areas with expanding transportation networks, and increase less rapidly in areas without such improvements. Rapid and continued rise in roads networks are expected in cities with transportation improvements and rapid economic and population growth [1]. Man, nations, regions and the world would be severely limited in development without transportation, which has a key factor for physical and economic growth [2]. Transportation systems and land use are interdependent. According to [3], transportation route is part of distinct development pattern or road network and mostly described by regular street patterns as an indispensable factor of human existence, development and civilization.

The Nigerian road network comprises Federal roads, State roads and Local Government roads. The problem of maintaining those roads has been given as one of the major factors leading to accidents, increasing road user cost and decreasing the economy of this nation [4]. Road networks are observed in terms of its components of accessibility, connectivity, and traffic density, level of service, compactness, and density of particular roads. Level of service is a measure by which the quality of service on transportation devices or

35 infrastructure is determined, and it is a holistic approach considering several factors
36 regarded as measure of traffic density and congestion rather than overall speed of the
37 journey [5]. Road network consists of large number of interwoven roads exhibiting many
38 patterns ranging from stars like to grid like with irregular patterns becoming recognized [6].
39 According to [7], road network constitutes an important element in urban development as
40 roads provide accessibility required by different land uses and the proper functioning of such
41 urban areas depends on efficient transport network which is a backbone to their very
42 existence. The analysis of the road network involves the recognition of the patterns and
43 qualities of the roads. The route network is a set node representing spatial locations and
44 displays topological and geometric variations, while topology itself refers to the arrangement
45 and connectivity of nodes and links of a network [8].

46
47 Developments of various transportation modes have become pivotal to physical and
48 economic developments. Such modes include human portorage, rail ways, ropeways and
49 cableways, pipelines, inland waterways, sea, air and roads [9]. Urban road transportation
50 system is one of the Centre's based on the assumption that consumers rationally choose a
51 form of transportation, according to their social and spatial position within the urban
52 marketing opined that the urban road transportation system acts as a basic components of
53 urban areas, social economic and physical structure it plays an essential role in the
54 determination of scale, nature and form of urban areas as stated by [10], [11]. Urban areas
55 have tendency to develop at modal points in transport network and places with good road
56 network. Urban location with such retrieve advantages are found where different transport
57 routes converge with high degree of compactness, connectivity, density, length and
58 accessibility exhibited within the intra-and inter-urban road networks as stated by [8].

59
60 Most poorly constructed and maintained roads are largely characterized by anomalies such
61 as potholes, rutting, speed bumps and pavement cracks. These anomalies are causatives to
62 a number of road traffic accidents leading to the loss of lives and properties [12], [13]. Often,
63 these anomalies are induced owing to the use of poor quality road construction materials,
64 inadequate drainage systems, and poor road maintenance culture [14]. They cause
65 accidents, and negatively impact the economic development of the affected areas. In
66 conditions where anomalies persist, a new paradigm may be required to curb the rate of
67 induced accidents. One approach from the vehicular point of view is to facilitate vehicles with
68 the capability to sense, characterize and profile road anomalies [15], [16]. This will provide
69 early information to drivers warning them about impending anomalies to aid their navigation.
70 In this regard, Smartphone Based Accelerometers (SBAs) have been widely used in the
71 literature [17; 18]. [19] Reported that monitoring the road network is essential due to its great
72 value as a public asset. One of the objectives set by [20] for 2018 is to reduce the
73 maintenance backlog on local roads and adopt a regime that will result in preventive
74 maintenance. Road condition monitoring consists of four main steps; raw data, defect
75 identification, defect assessment, and road condition index (RCI) calculation [21].

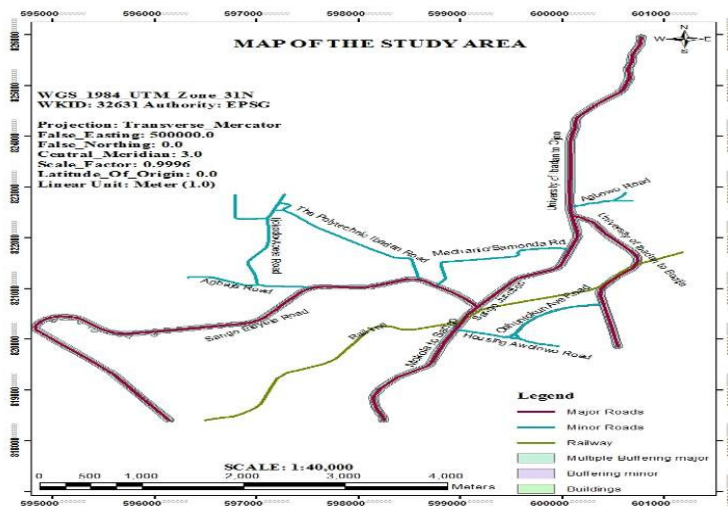
76
77 Global Positioning System (GPS), Geographic Information System (GIS) and the traditional
78 database applications will help in the management of the highway network using a common
79 Locational Reference System (LRS) that will integrate all data on road and bridge inventories
80 as described by [22]. They further stated that GIS provides the mechanism for integrating all
81 of the above data into a single environment and to enable spatial querying and analysis of
82 that data. According to RMGIS is necessary because nowadays, most road monitoring
83 systems can not directly show the precise geospatial location of monitored place as opined
84 by [23]. Their (proposed) system makes use of the powerful functions of GIS to realize real-
85 time monitoring and recording road conditions on electronic map in the system Centre.
86 Geographic Information System (GIS) and the Global Positioning System (GPS) are the two
87 geospatial technologies that are being used in monitoring of transportation generally as

88 stated by [24]. Therefore, no available information regarding the road conditions of major
89 and minor roads of the area study. Various agencies in-charge of road management in Oyo
90 state only have information about the road condition but not the actual position of defects
91 such as cracks and potholes. As a result of these challenges, there is need to create
92 information about road network conditions and the actual position of each potholes and
93 cracks to minimize the damages caused to road transportation means within the study area.
94

95 2. MATERIAL AND METHODS

96 2.1 The Study Area

97
98
99 The study area is part of Ibadan metropolis, Oyo State, Nigeria. The areas are commercial,
100 academic as well as market environment. It falls in the urban core area of Ibadan metropolis.
101 It is located approximately between latitude $7^{\circ} 23' 4''$ N to $7^{\circ} 23' 35''$ N and longitude $3^{\circ} 55'$
102 $56''$ E to $3^{\circ} 56' 48''$ E.
103



104
105 **Fig. 1. Showing the Map of the Study Area.**
106

107 2.2 Methods of Data Acquisition

108
109 Hi-target differential Global positioning (DGPS) receiver was used to determine the spatial
110 data (x, y) coordinates of each pothole and crack along both the major and minor routes.
111 The major routes consists of Ojoo/University of Ibadan-Sango, Sango/Eleyele, University of
112 Ibadan to Bodija and Sango/Mokola while the minor routes are Agbowo, The Polytechnic
113 Ibadan, Ijokodo, Apete and Agbaje that link Sango/Eleyele route, Sango/Housing and
114 Sango-Mechanic/Samonda, and Oshuntokun Avenue-Bodija route. Two Hi-target DGPS
115 receiver was used, one as base and the other as rover. The first one which was used as
116 base was set on a known control point located at Sango junction with reference number YZN
117 364 while the second Hi-target DGPS receiver used as a rover was carried around in
118 acquiring the x, y and z coordinates of the potholes and cracks along the major and minor
119 route. Extensive research has been performed in regards to the defect of cracks.
120 Specifically, methods that perform crack classification [25; 26; 27]; depth estimation [28] and
121 even sealing [29] have been presented. A comparison study of several methods that perform
122 image segmentation for crack detection and classification was conducted by [30]. [31] Have
123 also worked on patches; however their method can't tell the difference between a patch and
124 a pothole. Texture information for differentiating potholes from cracks was utilized by [32].
125

126 Shape information was used for detecting potholes in asphalt images [33]. Video data was
 127 used in detecting potholes [34]. One level deeper to measure the properties of potholes was
 128 worked by [35]. Steel tape was used to measure the encroachment of each feature such as
 129 buildings, shops and market place along the routes to know the features that falls within the
 130 specified right of way and those that are out of specification. Steel tape was used to
 131 measure the width and length of each pothole, while the depth was acquired using the
 132 differential Global positioning system (DGPS) receiver which is the height above the mean
 133 sea level to the reference ellipsoid. Stereo-vision can be used in road monitoring. Stereo-
 134 vision offers the possibility of reconstructing the surface with the aid of multiple video
 135 cameras. The applicability of such a technique for the purpose of road reconstruction was
 136 experimented by [36] and [37]. Additionally, [38] and [39] used it in a study for enhancing a
 137 method for highway condition assessment. [40] Applied it for measuring the depth of
 138 potholes and calculating the necessary filling material, [37] for detecting and classifying
 139 cracks and [41] for calculating crack depth. Also the setback for each feature along the
 140 routes was recorded using steel tape. A steel tape was used to measure the encroachment
 141 of each feature such as buildings, shops and market place along the routes to know the
 142 features that falls within the specified right of way and those that are out of specification of
 143 right of way. The specification for the right of way of major roads as specified by the state
 144 from the Centre of the road is 30 meters (98.42ft).

145 **Table 1. Coordinate of the control point used.**

Point identify	Northing	Easting	Height
YZN 364	820651.379	599156.600	243.144

147

148 **2.3 Specification Design**

149

150 Setback, width for major and minor roads, potholes and cracks specifications used in this
 151 study is listed in the table 2 below. A setback is the minimum distance which a building or
 152 other structures must be set back from a street, or road, river or other stream, shore or flood
 153 plain, or any other place which is deemed to need protection as defined by [42]. Highways
 154 (Federal or State) are of two types namely; the primary and secondary highways. The
 155 requirement for the setback from the primary (Federal or State) highways was 90m right of
 156 way that is 45m from the Centre of the road while that of secondary was 60m right of way
 157 that is 30m from the Centre of the road [43], as secondary roads are chosen by the state
 158 highway departments and appropriate local officials cooperatively, subject to approval by the
 159 Bureau of public road [43]. Local Roads (State) setback was 24m, 18m, 15m, 12m that is
 160 12m, 9m, 7.5m, 6m from the Centre of the road and that of rail line was a minimum distance
 161 of 21m between the property and the railway lines and 60m between property and
 162 unmanned railway crossing level [44].

163

164 **Table 2. Specification for Oyo State major and minor routes**

S/N	Features	Type	Width in (m)	Setback from the Centre of the road in (m)
1	Major Road	Line	9-15	30
2	Minor Road	Line	7-10	15
3	Potholes	Polygon	0.3-0.7	Nil
4	Cracks	Line	Nil	Nil

165

Source: Oyo State ministry of works

166

2.4 Data Processing

167

The acquired data was downloaded and processed using (HGO) Hi-target Geomatics Office
 168 Global Navigation Satellite System (GNSS) solution software fig 2 and 3.

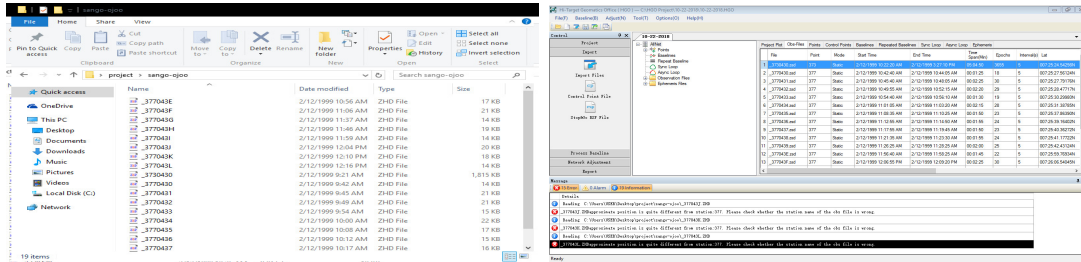


Fig. 2. Raw data downloaded and data in rinex format using HGO software

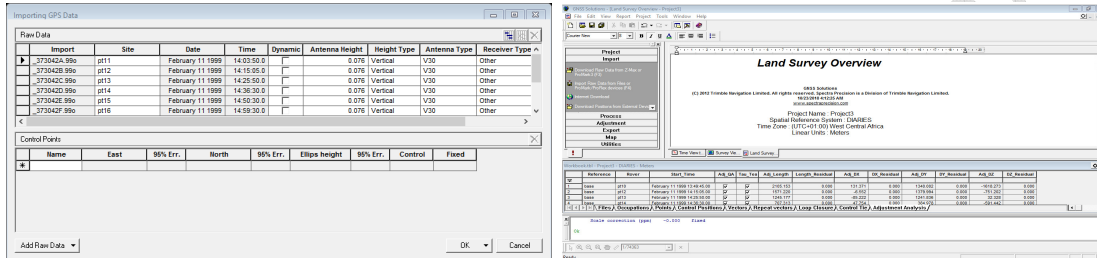


Fig. 3. GNSS solution in rinex data and result overview report in coordinate format.

3. RESULTS AND DISCUSSION

The results and analysis in this study was as a result of field observations and measurements carried out. The width of the major road measured was 14metres with 7metres measured from the Centre of the road to the edge of the road on both sides respectively. The result from the study showed a total number of 81 potholes, 29 cracks from different routes within the study area. Out of these were several potholes and cracks which fall into different categories of road type. The tables below describe further, the analyses of the field work of the study area. The total length of the major roads from Ojoo/University-Sango-Mokola was 8.43 kilometers in which Ojoo-University/Bodija Junction covers 3.74 kilometers, University of Ibadan-Sango Junction covers 2.12 kilometers, Sango-Mokola covers 2.57 kilometers. Sango-Eleyele covers 5.04 kilometers and University of Ibadan to Bodija covers 2.95 kilometers. For the minor roads, the distance from University of Ibadan to Agbowo road clipped was 508.76 meters, Sango to Housing road was 1.71 kilometers, Housing Rounabout to Oshuntokun Avenue Bodija was 1.15 kilometers, Mechanic-Samonda was 1.73 kilometers, The Polytechnic Ibadan road covers 2.01 kilometers, Sango Eleyele road to Agbaje cover 458.37 meters, Sango Eleyele to Apete covers 1.05 kilometers and Sango Eleyele to Ijokodo covers 2.50 kilometers.

3.1 Identification of roads with potholes and cracks

The two major defects identified on major and minor roads in the study area are the potholes and cracks. Table 3 below described the locations, the road types and the number of defects types.

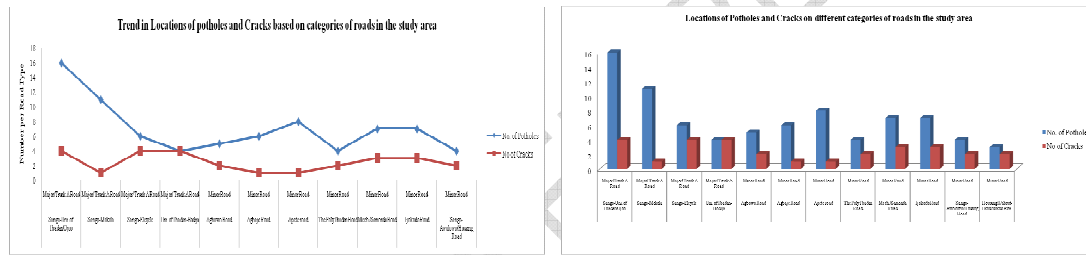
Table 3. Locations of potholes and cracks on major and minor road of the study area

S/N	Road Name	Road Type	No. of Potholes	No of Cracks
1	Ojoo/University of Ibadan-Sango	Major Road	16	4
2	Sango-Mokola	Major Road	11	1
3	Sango-Eleyele	Major Road	6	4

4	University of Ibadan-Bodija	Major Road	4	4
5	Agbowo Road	Minor Road	5	2
6	Agbaje Road	Minor Road	6	1
7	Apete road	Minor Road	8	1
8	Polytechnic Road	Minor Road	4	2
9	Samonda/Mech. Road	Minor Road	7	3
10	Ijokodo Road	Minor Road	7	3
11	Sango-Awolowo/Housing Road	Minor Road	4	2
12	Housing R/about-Oshuntokun Ave.	Minor Road	3	2
Total			81	29

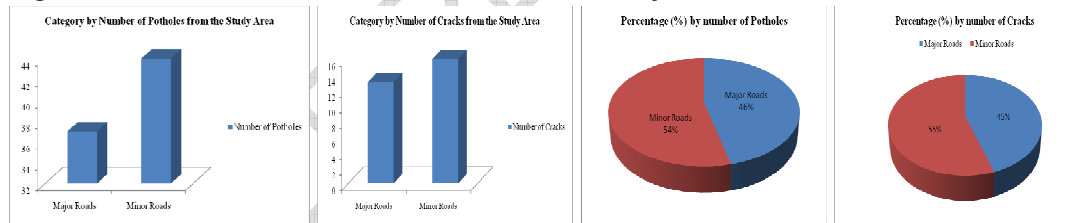
201
202
203
204
205
206
207
208
209
210

From the table 3 above, it can be deduced that the road network from Ojoo/University of Ibadan-Sango has the highest number of potholes followed by that of Sango-Mokola road. Thirty-seven (37) representing 45.68% number of potholes are on the major roads while forty-four (44) representing 53.32% number of potholes on minor roads while thirteen (13) representing 44.83% number of cracks are on major road and sixteen (16) representing 55.17% number of cracks on minor road which can be traced to the daily activities such as movement of vehicles, heavy carriage trucks and other road transport medium which occur on daily bases, material used by the road construction companies such as the soil type etc.



211
212

Fig. 4. Location of Potholes and Cracks in the study area



213
214
215
216
217
218
219
220
221
222

Fig 5. Shows different road classes and percentage of potholes.

From figures 5 above, it shows that minor roads is besieged with large number of potholes and cracks, follow by minor roads. However, the reasons for this may be attributed to the type of construction firm, compartment of the under laid soil before putting asphalt, poor drainage system, low quality material during construction and failure to repair the road at specified period of time.

Table 4. Roads of the study area and their conditions (good, very fair, fair, bad)

Location	Road Type	Condition	Total Numbers of Road
Ojoo/University of Ibadan-Sango to and fro.	Major Roads	Very fair	4
University of Ibadan Junction to Bodija to and fro.			
Sango-Mokola to and fro.			

Sango-Eleyele to and fro.			
None	Major Roads	Good	0
None	Minor Roads	Good	0
Sango/Awolowo-Housing Road	Minor Roads	Fair	4
Housing R/about to Oshuntokun Ave			
Mechanic Road-Samonda			
The Polytechnic Ibadan Road			
Agbowo Road	Minor Roads	Bad	4
Agbaje Road			
Ijokodo Road			
Apete Road			

223

224

225

226

227

228

229

230

231

232

233

234

235

236

237

238

239

240

241

242

243

244

245

Table 4 above showed that most of the major roads are very fair in condition, Sango-Housing minor road; Housing R/about to Oshuntokun Avenue, Mechanic-Samonda road and The Polytechnic Road is in fair condition while Agbowo, Agbaje, Ijokodo and Apete minor road is in bad condition and requires urgent attention by the state and local road maintenance agency in charge of road construction/renovation. The result generally showed that none of the major and minor roads in the study area portray good road quality. A good road is road which meets its best purpose and what makes a good road are; long life span without requiring major repairs, no potholes, reflective cracking, smooth movement of vehicles, save during winter, solid foundation during reconstruction, water resistance, compactment of soils well, best soil use, investment protection etc.

3.2 Identification of Features Along the Major Roads

Right of way according to [45] is a type of easement granted or reserved over the land for transportation purpose which can be for a highway, public footpath, railway, canal, as well as electrical transmission lines, oil and gas pipelines. Features such as buildings, filling stations, relaxation Centre's etc. along the major roads were observed and recorded. Larger percentage of the features is very close to the road side which indicates that rules and regulation governing right of way are not observed. 145 features were observed. The table below describes the different features and their distance to road.

Table 5. Distance between roads and the features within the study area.

Features Right of Way Along Ojoo/University of Ibadan road-Sango			
Features Identify	Distance to Road (m)	Features Identify	Distance to Road (m)
Fat oil fueling station	1.70	Uncompleted building	5.80
Bukky eleja	11.30	Keto filling station	4.40
Lailad fueling station	1.65	Shopping complex	14.00
C L J event place	9.45	Police station	3.05
Total fueling station	2.84	Police station	4.04
Ventura shopping mall	3.60	Shops	6.00
N B C building	1.25	Shops	4.15
Aerodrome entrance	9.30	Alleluyah filling station	2.04
Samanda	2.70	Alleluyah hotel	1.01
Samanda	3.25	Alleluyah bar	6.48

Furniture point	2.37	Car dealer office	3.90
Car wash	2.95	Expoyo main gate	28.05
Total fueling station	3.50	Scripture union	19.60
Agbowo complex	5.50	CBN centre	21.35
Agbowo complex	2.40	Wall fence	4.07
F c m b bank	2.80	Redeemed church	19.35
Shopping complex	6.00	MFM church	3.10
Mobile fueling station	4.45	ADC building	3.10
Richbam tower	3.90	Restaurant	5.70
Completed building	5.00	Mobile filling station	3.40
Completed building	6.95	Wall fence	6.75
Sabsons fueling station	2.30	Immanuel college	9.30
Stanbic bank	4.53	Wall fence	12.00
Ikeolu shopping complex	4.83	Havannal hall	12.00
Uncompleted building	5.80	Main stream bank	9.05

Features Right of Way Along Sango-Mokola road

Features Identify	Distance to Road (m)	Features Identify	Distance to Road (m)
Zenith bank	4.30	Shopping complex	3.00
Vita foam	3.50	Water cooperation	2.05
ADC party house	2.58	St. Bridget covenant	5.20
Canteen	3.00	St. Gabriel church	5.20
Shops	2.50	PHCN office	5.00
Gastab fueling station	3.00	Oando filling station	2.90
Master furniture building	5.20	Alafia primary school	4.00
Etisalat customer centre	3.90	Veterary hospital	4.50
Beer parlor	4.10	Shopping complex	3.28
Redeemed church	3.25	Badejoko hospital	3.01
Shopping complex	3.27	City royal motor park	3.50
Primary education board	10.45	Feed well	0.62
Modern school	6.60	GTB bank	3.00
Bethel hospital	3.50	Tejuoso complex	2.50
Providence court	3.55	Shopping complex	5.28
Cocacola depot	5.50	M.R.S	3.00
Goshen event centre	2.10	Shops	3.00
Completed building	2.50	Oando	5.00
Shops	1.65	Carlcare centre	8.90
Army barrack	8.40	Cementary	3.20
Shops	1.25	C.A.C church	7.02
Shopping complex	3.00	Wema bank	3.09
Shopping complex	4.50	Sango market	6.02
GTB bank	3.00		

Features Right of Way Along Sango-Eleyele Road			
Features Identify	Distance to road (m)	Features Identify	Distance to Road (m)
Total fueling station	3.70	Ansa-rudeen sch	12.00
Living spring	2.85	Filling station	8.10
Merry bet building	3.45	Reliance building	12.00
Gastab fueling station	2.90	Oshiokoya building	9.60
Building	4.95	Emperor station	1.50
Shop	3.15	Ascon station	4.00
Ennies Nurs and pri sch	3.53	Forsquare church	15.00
Intercontinental bank	2.12	Advocate filling station	7.20
Spac church	9.90	Heritage bank	3.10
Biskan garden heritage	2.40	Fataj oil	3.90
Stationary	1.60	Powa shop	4.70
Mr Biggs	4.15	Barracks shop	1.50
Nipco fueling station	2.21	Anglican church	5.17
Psalmist Christian centre	10.85	First bank	30.45
Shops	4.00	Conoil	1.37
Uncompleted building	8.45	Poly fence	12.73
Academy/concept building	4.45	Tafo arena	20.60
Hill top hotel	4.10	Okanlawon plaza	11.00
C.A.C church	12.45	Cinnati pharmacy & store	4.89
Sioa plaza	3.75	Redeemed church	11.00
Sugar house hotel	3.30	St david church	10.28
Total fueling station	6.15	Gbaremu shop	4.79
Gbaremu market	7.41	St rita's catholic church	10.96
Daplan event centre	9.45	NMPC	7.40

246
247 From the table 5 above, the minimum and maximum distance observed from the Centre of
248 the road to the features ranges from 0.62-30.45m. Since the distance of features to the
249 Centre of the road either to the left of right of the road is 30m (98.42ft) and that of the study
250 area is 30m, then it showed that only one (First Bank) beside The Polytechnic Ibadan was
251 within the specified distance while others are not within the specification of right of ways.
252 with a distance of 30.45m. The reason for the encroachment was as a result that all these
253 major roads are single lane before and some of the features already exist before the road
254 was later converted to double lane so as to ease the constant occurrence of traffic delay
255 along the four major routes.
256

257 3.3 Potholes and Cracks Along the Major and Minor Roads

258 Pavement deterioration and degradation arises as a result of many factors such as lack of
259 proper design, poor road surface drainage, heavy truck/vehicle overloading, seepage,
260 improper road maintenance [46]. He further stated that these factors mentioned could be
261 adversely affects the traffic flow. Highways and road maintenance is a way of preserving and
262 keeping different categories of roadway, road side and structures as closely as possible in its
263 original condition as constructed or as later improved the way of making use of highway and
264 road facilities and services to ease transportation process [47]. There are various highway
265 and road maintenance functions which are drainage and road side maintenance, bridges

266 constructed maintenance, traffic service and road surface maintenance leading to potholes
 267 and cracks. Potholes are caused by gradual formation of cracks along the road. Potholes are
 268 bowl shaped depression varying sizes in the pavement surface having sharp edges and
 269 mostly occur on road with thin surface course [46]. Cracks are formed by many factors such
 270 as water accumulation on road, oil spill, stripping, drying shrinkage etc. [46]. Table 6 below
 271 described the spatial location values (x, y) coordinates, length, depth and width of the major
 272 and minor roads in the study area.

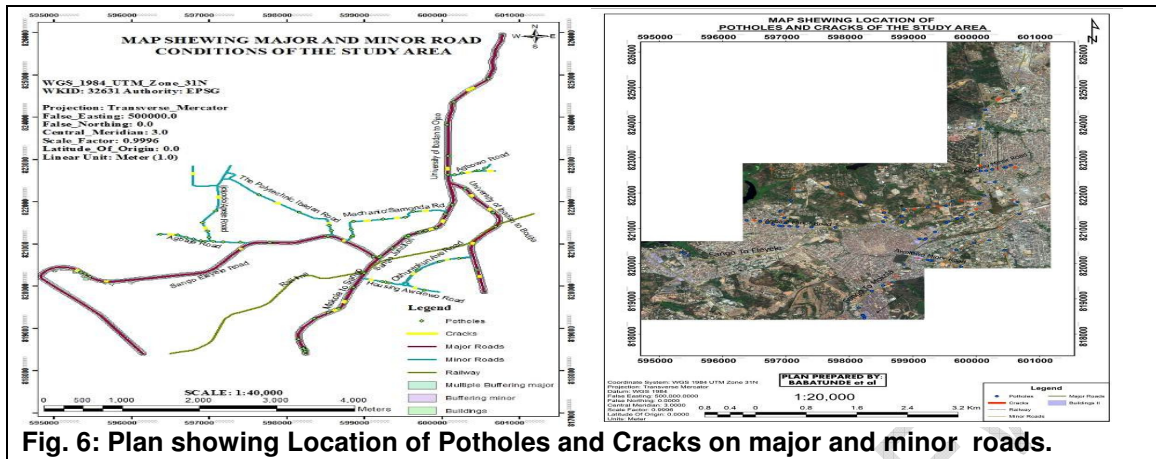
273 **Table 6: Spatial coordinate X, Y, length and width of potholes, cracks on major roads**
 274

X Coordinate(m)	Y Coordinate(m)	Lengt h (m)	Dept h (m)	X Coordinate(m)	Y Coordinate (m)	Lengt h (m)	Dept h (m)
599185.142	820684.266	1.05	0.20	599930.871	821393.007	0.06	0.30
Potholes Along Sango-University of Ibadan/Ojoo Major road							
599206.573	820713.635	0.82	0.25	600045.727	821708.246	1.04	0.10
599351.036	820902.389	1.33	0.44	600124.309	821933.512	1.02	0.60
599529.312	821157.581	0.20	0.53	600072.715	822631.498	0.23	0.56
599563.840	821196.474	1.00	0.05	600072.717	823076.951	0.61	0.47
599687.983	821275.730	1.52	0.28	600065.968	823822.403	0.35	0.10
599709.018	821286.446	1.00	0.80	600144.549	824363.424	0.48	0.71
599785.218	821311.052	0.04	0.60	600586.986	824910.914	0.55	0.66
Potholes Along Sango-Eleyele Major road							
599534.507	821183.986	0.72	0.45	595459.950	820224.690	0.31	0.09
599108.362	820700.954	0.10	0.30	595396.902	820287.653	1.00	0.30
597779.123	821031.689	0.61	0.35	595343.144	820329.205	1.10	0.35
Potholes Along Sango-Mokola Major road							
599000.214	820313.448	0.35	0.52	598208.190	818528.880	1.02	0.13
598671.443	819471.907	0.20	0.35	598220.451	818519.220	1.60	0.44
598530.684	819378.774	0.80	0.80	598228.033	818500.106	1.01	0.28
598350.723	819228.490	1.45	0.12	598234.010	818482.509	0.10	0.49
598146.733	818747.371	1.20	0.42	598234.341	818446.791	0.41	0.50
598211.827	818546.078	1.40	0.70				
Potholes Along University of Ibadan-Bodija Major road							
600298.670	822309.476	0.65	0.55	600682.358	821410.102	0.77	0.44
600653.397	821750.644	0.47	0.39	600446.878	820382.802	0.62	0.36
Potholes Along Agbaje Minor Road							
596945.184	821064.661	0.54	0.84	596703.746	821155.155	0.71	0.78
596890.832	821069.435	0.65	0.67	596593.681	821205.835	0.49	0.45
596793.916	821109.286	0.62	0.88	596375.975	821227.753	0.69	0.52
Potholes Along Apete Minor Road							
596560.700	823450.830	0.55	0.56	595803.270	823510.690	0.66	0.28
596252.920	823538.350	1.64	0.88	595594.250	823468.470	0.58	0.46
596198.020	823554.250	0.76	0.71	595355.430	823458.670	0.48	0.40
596098.780	823582.910	1.37	0.89				
Potholes Along Mechanic-Samonda Minor Road							
598833.531	821169.588	0.30	0.54	599238.252	821591.386	0.56	0.44
598842.130	821196.046	0.52	0.76	599523.080	821637.273	0.48	0.56
598826.447	821342.689	0.82	0.58	599634.373	821769.473	0.71	0.49
598859.515	821533.002	0.44	0.62				
Potholes Along Ijokodo Minor road							
597402.597	821035.049	0.81	0.35	596973.033	821304.134	0.74	0.61

597180.423	821049.240	0.66	0.52	596911.733	821501.951	0.68	0.52
597052.761	821061.740	0.58	0.28	597075.952	821785.320	0.41	0.21
596994.147	821151.939	0.49	0.55				
Potholes Along Awolowo-Housing Minor Road							
599230.657	820110.991	0.47	0.36	599968.624	820589.814	0.47	0.47
599272.250	820094.163	0.38	0.46	600211.001	820664.232	0.55	0.62
599762.191	819912.765	0.71	0.29	599315.271	820080.035	0.36	0.22
599687.088	820388.328	0.56	0.36				
Potholes Along Agbowo Minor Road							
600161.651	822638.233	0.44	0.35	600471.654	822730.353	0.37	0.58
600254.521	822674.773	0.64	0.61	600548.085	822791.300	0.44	0.38
600443.676	822727.555	0.52	0.52				
Potholes Along The Polytechnic Ibadan							
598567.865	821311.048	0.66	0.55	598162.374	821774.276	0.47	0.58
598545.377	821440.234	0.82	0.49	597639.338	822163.873	0.74	0.77
X	Y Coordinate(m)	Len	Width	X	Y Coordinate	Len	Width
Coordinate(m)		gth (m)	(m)	Coordinate(m)	(m)	h (m)	(m)
Cracks Along Sango-University of Ibadan/Ojoo Major Road							
600065.692	822759.766	0.22	0.35	599994.890	821526.049	0.61	0.45
600332.710	824639.721	0.40	0.32	599843.718	821346.812	0.51	0.19
Cracks Along Sango-Eleyele Major Road							
595290.414	820385.631	0.44	0.82	597396.895	820888.810	0.17	0.55
595668.968	820116.565	0.56	0.26	598726.782	821080.011	0.23	0.63
Cracks Along Sango-Mokola Road							
598607.159	819428.101	0.50	0.25	598733.342	819623.159	0.62	0.47
Cracks Along University of Ibadan-Bodija Major road							
600375.023	822161.987	0.63	0.54	600392.777	821027.717	0.80	0.66
600601.763	821828.036	0.44	0.47	600475.416	820248.050	0.63	0.42
Cracks Along Agbaje Minor Road							
596479.354	821229.556	0.63	0.81				
Cracks Along Apete Minor Road							
595937.310	823566.310	0.69	1.20	595121.900	823437.870	0.65	0.44
Cracks Along Mechanic-Samonda Minor Road							
599005.949	821552.769	0.56	0.51	599398.328	821617.434	0.43	0.35
599756.115	821784.696	0.62	0.70				
Cracks Along Ijokodo Minor Road							
596950.622	821370.171	0.55	0.32	596780.657	822654.616	0.70	0.64
597108.492	822098.696	0.64	0.41				
Cracks Along Awolowo-Housing Minor Road							
599073.327	820160.270	0.77	0.45	599619.577	820294.227	0.42	0.63
599637.896	819973.810	0.50	0.34	600052.632	820627.781	0.56	0.29
Cracks Along Agbowo Minor Road							
600316.844	822688.795	0.44	0.39	600589.989	822737.170	0.57	0.66
Cracks Along The Polytechnic Ibadan Minor Road							
598538.885	821477.529	0.88	0.48	597892.919	821958.961	0.60	0.69

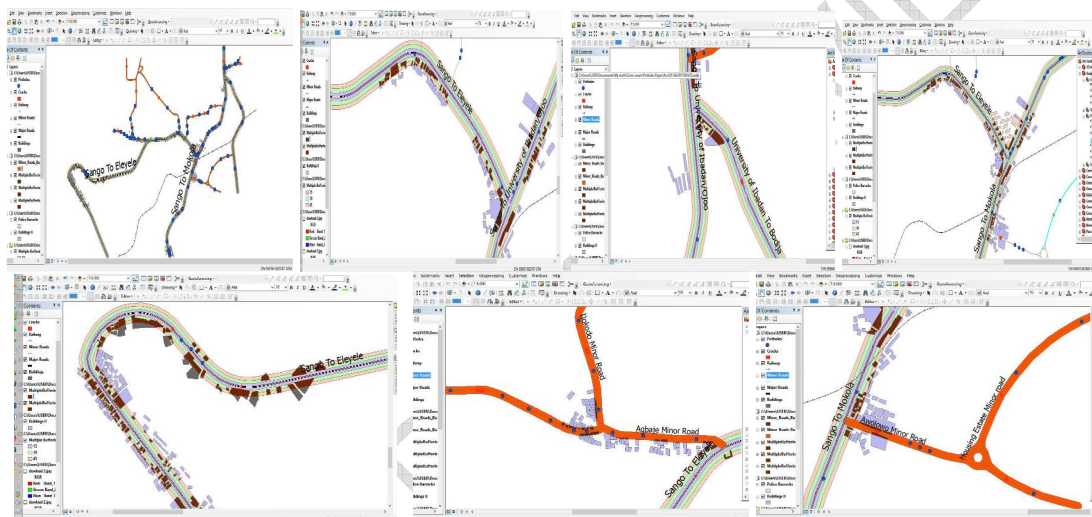
275
276
277
278
279

From the table 6 above, the minimum and maximum length and depth of pothole ranges from 0.04-1.64 m, 0.05-0.89 m and crack minimum and maximum length and width ranges 0.17-0.88 m, 0.20-0.82 m which implies that the road are fair condition. Therefore, all the affected areas should be renovated so as to avoid expansion on the affected parts.



280
281
282

Fig. 6: Plan showing Location of Potholes and Cracks on major and minor roads.



283

Fig. 7. Multiple buffering of major and minor roads in the study area.

284
285
286
287
288
289
290
291
292
293

Fig. 7 showed multiple buffering rings of 15m interval and buffering features within and beyond the specified right of way along the route of the study area. The area with purple accent color shows those features within 45m right of way, the area with color olive green are the features within 30m right of way while the area with orange accent color are the features that are within 15m distance.

3.4 Analysis of multiple ring buffering

294
295
296
297
298
299
300
301

The features along the major roads were buffered with reference to the specified right of way which is 30 m (98.42ft) standard distance from the Centre of the road. From the result in Fig 7, it showed clearly that at 45m distance, 92% of the features falls along the roads, at 30m distance which is the required specification for the setback in Oyo State, 85% of the features falls along the right of way and at 15m distance about from the Centre of the road, 95% of the features falls outside the specified right of way. From the result and analysis, it showed that the specified right of way is not strictly followed by individuals and corporate organizations which may leads to loss of life and properties within the study area.

302

303

4. CONCLUSION

304

305

306

307

308

309

310

311

312

313

314

315

316

317

318

319

320

321

322

323

324

325

This study has examined the effectiveness and efficiency of road system on major and minor roads in part of Ibadan metropolis, Oyo State, Nigeria using GIS application. The result from this study showed that 99% of features along the major route did not comply with the specification of right of way and this was as a result that the features exist when all these major roads was in single lane before converting them to two lanes. The effects of the potholes and cracks in the study area may be attributed to structural failure, standards/specifications and policy, traffic load and volume, properties and construction conditions, drainage system and ground water, aggregate properties, alignment and geometry of road, flexible pavement layers thickness, and pavement width which is the same result of [48] while the causes of major and minor road failure may be factors such as poor design and construction, poor maintenance of already built highways, use of low quality materials in construction, poor workmanship and poor supervision of construction work and the applying of heavy traffic that were not meant for the road which is the result of [49]. The results in this study will help government to know features that are within and out of road specification as well as the location of defects points that is potholes and cracks and the necessary action to take on them. The Oyo State and local government road maintenance agency should go on constant monitoring to know the affected area that requires renovation in the study area as well as the entire parts of the metropolis so as to prevent loss of life and properties. Penalty/fine should be place on whoever disobeys the rule and regulation governing the right of way specification be it features or vehicle breakdown.

COMPETING INTERESTS

326

327

328

No competing interest exists.

329

AUTHORS' CONTRIBUTIONS

330

331

332

333

334

Authors joint work make up the manuscript as all authors read and approved the final manuscript.

335

REFERENCES

336

337

338

339

340

341

342

343

344

345

346

347

348

349

350

351

352

353

1. Goldberg MA, Transportation, Urban Land Values, and Rents: A Synthesis Land Economics, 1970;46, 2 (May):153-162.
2. Oyesiku OO. From Womb to Tomb. 24th Inaugural Lecture at Olabisi Onabanjo University on 27 August 2002. Ago-Iwoye: Olabisi Onabanjo University Press, 2002.
3. Bailey L., Mokhtarian PL., Little A. The Broader Connection between Public Transportation, Energy Conservation and Greenhouse Gas Reduction. Report prepared as part of TCRP Project J-11/ Task 3; 2008.
4. Olatunji A., Diugwu IA. A Project Management Perspective to the Management of Federal Roads in Nigeria: A Case Study of Minna- Bida Road, 2013;vol. 1, no. 4:pp. 54–61.
5. Mannering L., Fred P. Walter Kilareski, Scott S. Washburn. Principles of Highway Engineering and Traffic Analysis". 3rd ed. NJ: John Wiley & Sons, 2004.
6. Zhang, Q. and GIS Centre Lund University, Sweden. Modeling Structure and Patterns in Road Network Generalization". Paper Presented at ICA Workshop on Generalization and Multiple Representation, held in Leicester, August, 2004:20-21.
7. Aderamo, AJ. A Graph Theoretic Analysis of Intra-Urban Road Network in Ilorin, Nigeria. Research for Development. 17, 1 & 2; 18, 1 & 2 (December 2003).

- 354 8. Wyatt, P. The Development of A GIS-Based Property Information for Real Estate
355 Valuation. *International Journal of Information Science*, 1997;11(5).
- 356 9. Said, MN. MZ. Shah. GIS as a Supporting Tool in The Establishment of Land Use-
357 Road Density Model in www.GISdevelopment.net, 2008.
- 358 10. Dickney, JW. *Metropolitan Transportation Planning*. Washinton, DC Scripta Books,
359 1975.
- 360 11. Balchin, PN, Kieve, JL, Bull, GH. *Urban Land Economics and Public Policy (Fourth*
361 *Ed.) Hampshire: Macmillan Educational Limited, 1991.*
- 362 12. Zack, JM. Tversky, B. Event Structure. *Psychological Bulletin*, 2001:127.
- 363 13. Kawu, IM. Our Roads, Our Lives. in *Vanguard Newspaper*, ed, 2016.
- 364 14. Bello-Salau, H. Aibinu AM. Onwuka, E., NDUkiya, JJ. Onumanyi, AJ. Image
365 processing techniques for automated road defect detection: A survey in 11th
366 International Conference on Electronics, Computer and Computation (ICECCO),
367 2014;pp. 1-4.
- 368 15. Bello-Salau, H Aibinu AM Onwuka, EN. Dukiya, JJ. Bima, ME. Onumanyi, AJ.
369 Folorunso, TA. A New Measure for Analysing Accelerometer Data towards Developing
370 Efficient Road Defect Profiling Systems. *Journal of Scientific Research & Reports*,
371 2015;vol. 7:pp. 108-116.
- 372 16. Bello-Salau, H. Aibinu AM. Onwuka, EN. Dukiya, JJ. Onumanyi, AJ. Ighabon, AO.
373 Development of a Laboratory Model for Automated Road Defect Detection. *Journal of*
374 *Telecommunication, Electronic and Computer Engineering (JTEC)*, 2016;vol. 8:pp. 97-
375 101.
- 376 17. Bello-Salau, H. Aibinu AM. Onumanyi, AJ. Onwuka, EN. Dukiya, JJ, Ohize, H. New
377 Road Anomaly Detection and Characterization Algorithm for Autonomous Vehicles.
378 *Applied Computing and Informatics Elsevier*; 2018.
- 379 18. Strutu MI., Popescu, D. Accelerometer Based Road Defects Identification System.
380 *U.P.B. Sci. Bull., Series C*, 2014;Vol. 76:Iss. 3.
- 381 19. Highways Agency. *Annual Reports and Accounts 2011-12*. Department for Transport,
382 UK; 2012.
- 383 20. ICE. *The state of the nation – Infrastructure 2014*. Institute of Civil Engineers.
- 384 21. Stefania C. Radopoulou A, Ioannis Brilakis B. Improving road asset condition
385 monitoring. *Transportation Research Procedia* 14 (2016):3004 – 3012. 6th Transport
386 Research Arena April 18-21, 2016; Available online at www.sciencedirect.com
- 387 22. Langunzad, LV. Mcpherson, K, GIS Applications for Road Network of The Philippines:
388 A new Technology in Road Management. In *journal of the Eastern Asia Society for*
389 *Transportation Studies*, October 2003;volume 5:pp. 846-854.
- 390 23. Yu, J., Wu, T., Yi, M. Research and Implementation of Road Monitoring GIS System.
391 *Geoinformatics 2007: Geospatial Information Technology Applications*. Edited by Peng
392 Gong, Yong xue Liu, *Proceedings of SPIE*, 2007;Vol: 6754, 6754OQ.
- 393 24. Akomolafe, DT., Adekayode, FO, Gbadeyan, JA, Ibiyemi, TS. Enhancing Road
394 Monitoring and Safety through the use of Geospatial Technology. *International Journal*
395 *of Physical Sciences*, May 2009;Vol. 4(5);pp. 343 – 438.
- 396 25. Moghadas Nejad, F., Zakeri, H. A comparison of multi-resolution methods for detection
397 and isolation of pavement distress. *Expert Systems with Applications*, 2011;38(3):2857–
398 2872.
- 399 26. Salari, E., Bao, G. Pavement distress detection and severity analysis. *IS&T/SPIE*
400 *Electronic Imaging*, 2011; 201178770C–78770C.
- 401 27. Ying, L., Salari, E. Beamlet Transform-Based Technique for Pavement Crack Detection
402 and Classification. *Computer-Aided Civil and Infrastructure Engineering*, 2010;25(8):
403 572–580.
- 404 28. Amarasiri, S., Gunaratne, M., Sarkar, S. Modeling of Crack Depths in Digital Images of
405 Concrete Pavements Using Optical Reflection Properties. *Journal of Transportation*
406 *Engineering*, 2009;136(6):489–499.

- 407 29. Kim, YS, Yoo, HS, Lee, JH, Han, SW. Chronological development history of X–Y table
408 based pavement crack sealers and research findings for practical use in the field.
409 Automation in Construction, 2009;18(5):513–524.
- 410 30. Tsai, YC, Kaul, V., Mersereau, RM. Critical assessment of pavement distress
411 segmentation methods. Journal of Transportation Engineering, 2009;136(1):11–19.
- 412 31. Battiato, S., Stanco, F., Cafiso, S., Di Graziano, A. Adaptive Imaging Techniques for
413 Pavement Surface Distress Analysis. Communications to SIMAI Congress; 2007.
- 414 32. Lin, J., Liu, Y. Potholes detection based on SVM in the pavement distress image.
415 Distributed Computing and Applications to Business Engineering and Science
416 (DCABES), 2010 Ninth International Symposium, 2010;544–547.
- 417 33. Koch, C., Brilakis, I. Pothole detection in asphalt pavement images. Advanced
418 Engineering Informatics, 2011;25(3), 507–515.
- 419 34. Koch, C., Jog, GM., Brilakis, I. Automated Pothole Distress Assessment Using Asphalt
420 Pavement Video Data. Journal of Computing in Civil Engineering, 2012;27(4): 370–378.
- 421 35. Jog, GM., Koch, C., Golparvar-Fard, M., Brilakis, I. Pothole Properties Measurement
422 through Visual 2D Recognition and 3D Reconstruction. Computing in Civil Engineering
423 2012;553–560.
- 424 36. Hou, Z., Wang, KC, Gong, W. Experimentation of 3D pavement imaging through
425 stereovision. Proc. of Int. Conf. on Transportation Engineering (ICTE 2007), 2007;376–
426 381.
- 427 37. Wang, KC. Positioning and Imaging Sensors for Automated Asset Management of
428 Transportation Facilities. International Conference on Transportation Engineering,
429 2007;19–24.
- 430 38. Uslu, B., Golparvar-Fard, M., de la Garza, JM. Image-based 3D reconstruction and
431 recognition for enhanced highway condition assessment. Proceedings of the 2011
432 ASCE Intl. Workshop on Computing in Civil Engineering, Miami, FL, 2011:67–76.
- 433 39. Balali, V., Golparvar-Fard, M. Segmentation and recognition of roadway assets from
434 car-mounted camera video streams using a scalable non-parametric image parsing
435 method. Automation in Construction, 2015;49:Part A, 27–39.
- 436 40. Chang, KT., Chang, JR., Liu, JK. Detection of pavement distresses using 3D laser
437 scanning technology. Proc. of the 2005 ASCE Int. Conf. on Computing in Civil
438 Engineering, 2005:105.
- 439 41. Yu, SJ, Sukumar, SR., Koschan, AF, Page, DL, Abidi, MA. 3D reconstruction of road
440 surfaces using an integrated multisensory approach. Optics and lasers in engineering,
441 2007;45(7):808–818.
- 442 42. [www.wikipedia.org/wiki/setback_\(land_use\)](http://www.wikipedia.org/wiki/setback_(land_use))
- 443 43. <http://www.google.com/amp/s/nexthomes.wordpress.com>, Building in Lagos-Know the
444 Setback Requirement.
- 445 44. Smith Wilber, E. The Federal Urban highway Programme Illinois Municipal Review.
446 Springfield, Illinois: Illinois Municipal League, 1958, pp227-230. Retrieved February 7,
447 2016; Available at: http://en.m.wikipedia.org/wiki/Federal-aid_highway_program.
- 448 45. Paul D. Right-of-way management. UPROW committee report, 2001.
- 449 46. Haseeb Jamal, What are Road Cracks? How they are formed. Transportation
450 Engineering, July 08, 2017a; available at: [http://www.aboutcivil.org/road-cracks-types-](http://www.aboutcivil.org/road-cracks-types-factors.html)
451 [factors.html](http://www.aboutcivil.org/road-cracks-types-factors.html)
- 452 47. Haseeb Jamal, Highway Maintenance – Road Maintenance. Transportation
453 Engineering, May 14, 2017b; Available at: [http://www.aboutcivil.org/maintenance-of-](http://www.aboutcivil.org/maintenance-of-highways-roads.html)
454 [highways-roads.html](http://www.aboutcivil.org/maintenance-of-highways-roads.html).
- 455 48. Tarawneh, S. Sarireh, M. Causes of Cracks and Deterioration of Pavement on
456 Highways in Jordan from Contractors' Perspective. 2013;vol. 3, no. 10:pp. 16–27.
- 457 49. Okigbo, N. Causes of Highway Failures in Nigeria. 2012;vol. 4, no. 11:pp. 4695–4703.